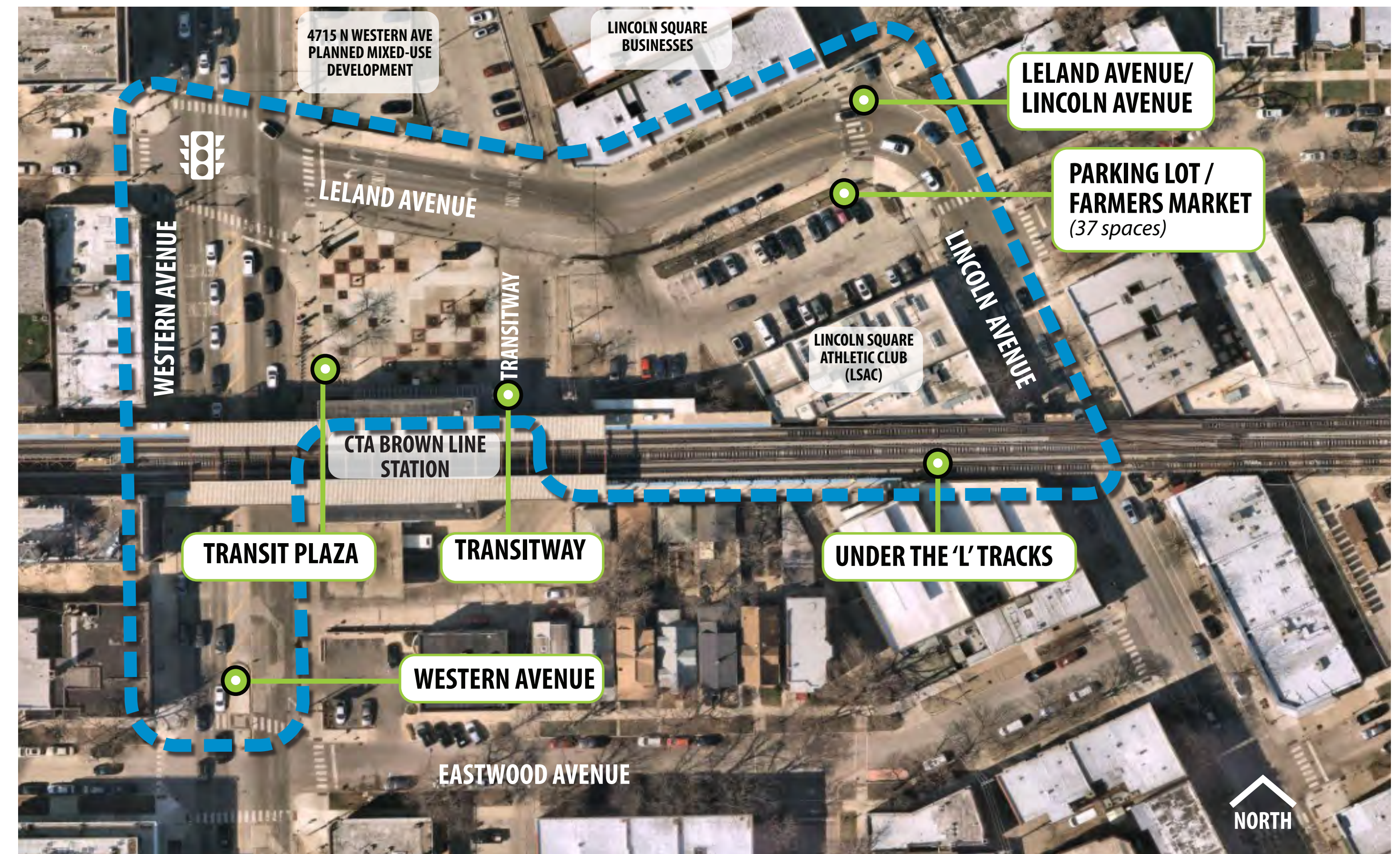


PROJECT INTRODUCTION

Project Area

The areas of improvement include the transit plaza adjacent to the CTA Brown Line Station, the Farmers Market Parking Lot, the area under the 'L' tracks, Leland Ave (between Lincoln Ave and Western Ave), and Western Ave (between Montrose Ave and Leland Ave).



Project Purpose

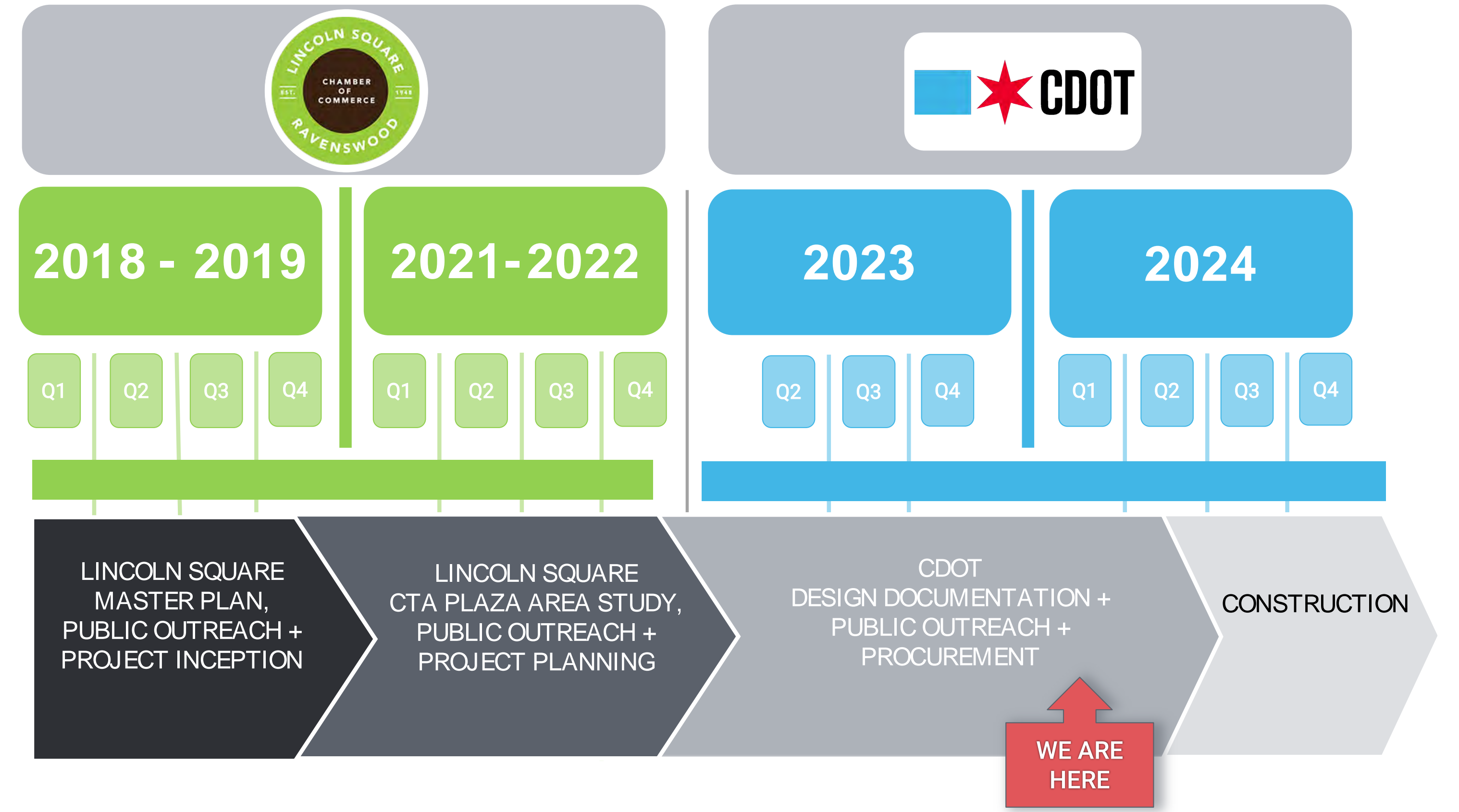
Building upon the Lincoln Square Master Plan conducted by the Lincoln Square Chamber of Commerce, and the Leland Ave Greenway neighborhood bike connection, the project will foster community and economic growth, support opportunities for community gatherings and events, and provide protected bike facilities within the area. The project will also provide an enhanced pedestrian connection from the CTA Brown Line Station to Lincoln Ave under the existing elevated tracks.

Project Improvements

- New sidewalk, curb + gutter
- ADA ramps, curb extensions + crosswalks
- Full width roadway pavement replacement
- Roadway geometry + intersection improvements to support pedestrians, bus transit + cyclists
- Drainage improvements
- Pavement markings
- Pavers
- New street lighting
- Specialty pedestrian lighting
- Trees + landscaping
- Site furnishings, including benches, bollards + bike facilities
- Enhanced pedestrian plaza areas

Project Schedule

This project builds upon work completed and adopted by the Lincoln Square Chamber of Commerce, including the Lincoln Square Master Plan and Lincoln Square CTA Plaza Area Study.

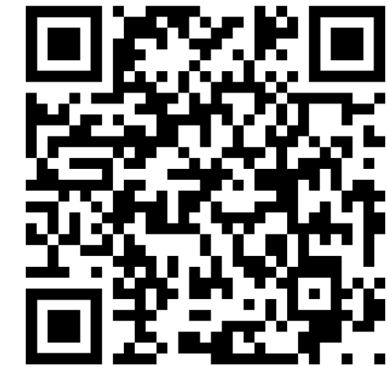


LINCOLN SQUARE BROWN LINE AREA IMPROVEMENTS



LINCOLN SQUARE CHAMBER OF COMMERCE | MASTER PLAN HIGHLIGHTS

LINCOLN SQUARE MASTER PLAN



<https://www.lincolnsquare.org/SSA-Master-Plan>

What was the Master Plan about?

In 2019, the Lincoln Square Master Plan was adopted by the Chamber, representing the culmination of a 12-month community collaboration between residents, business owners, city stakeholders and many others. The Plan is actively used by the Chamber of Commerce to guide strategic decision-making for transportation projects, public infrastructure, and private development. Central to the Master Planning effort was a robust community outreach process that solicited inputs from Lincoln Square's residents, businesses, and organizations. The Master Plan identifies objectives, projects and actions distilled from thousands of comments received.

Based on the conceptual design recommendations in the original Master Plan, the Chamber conducted a CTA Station Area Study which delved further into design and outreach for the areas within and surrounding the CTA Station Area. Following a second robust outreach program, the Chamber completed the CTA Station Area study in Spring 2022, which serves as a guide to the CDOT / CTA Transit Plaza Area and Streetscape Project.

Key features of the CTA Plaza Area Plan include:

- Provide a plaza space that establishes a pedestrian-oriented destination and features specialty, lighting, landscaping, custom furnishings and other unique elements.
- Support community fests and events year-round, including continued farmers markets at the Farmers Market Parking Lot.
- Develop a safer and more attractive pedestrian way beneath the "L" tracks.
- Establish protected bike facilities between Leland and Western Ave to complete the Leland Ave Greenway within the project limits.

CTA Plaza Area Plan Highlights

NEIGHBORHOOD POLLS

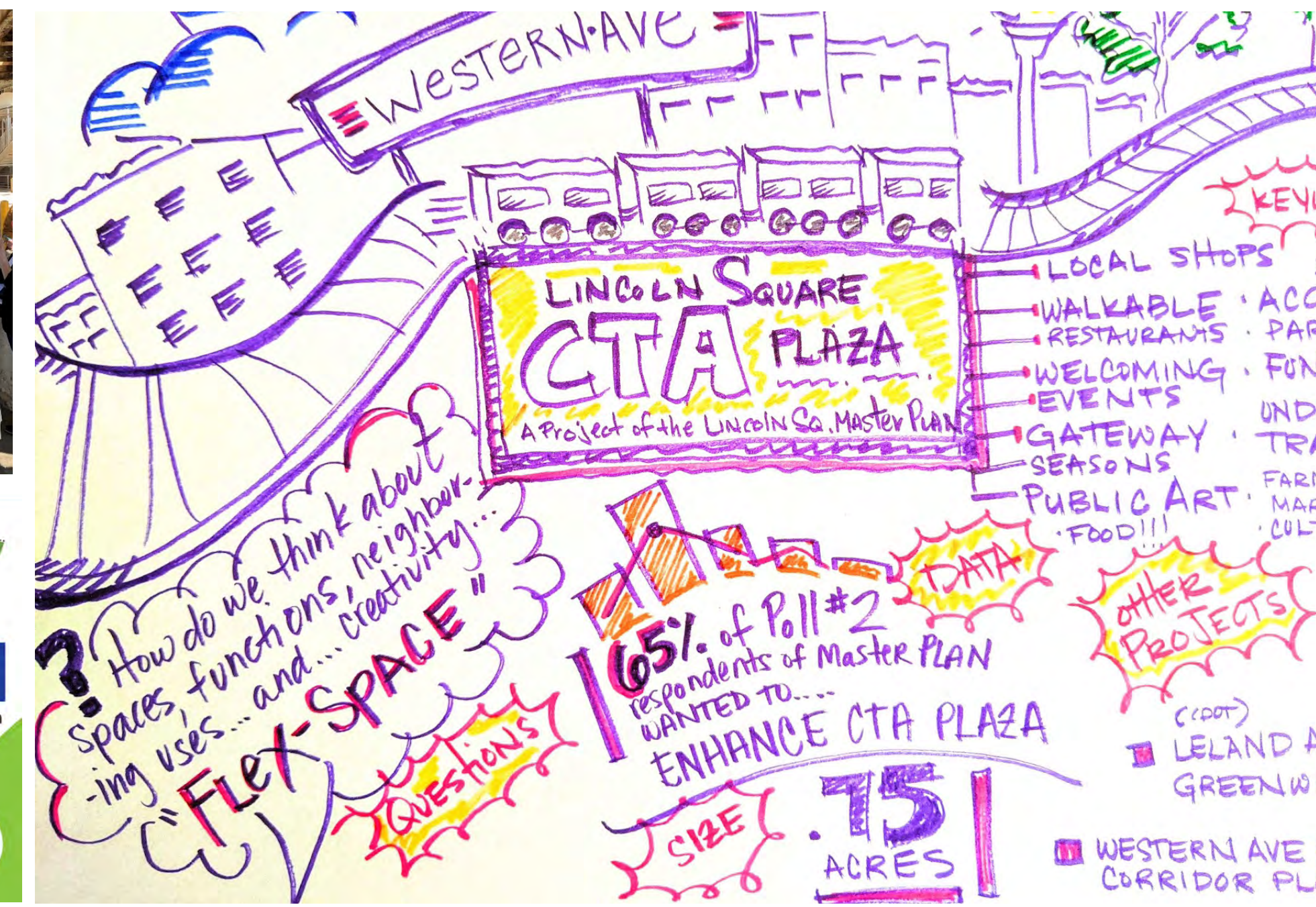
POLL #1: Issues + Opportunities (Summer 2021)
1,429 participants, 2,144 comments
POLL #2: Image Preference Survey (Fall 2021)
980 participants, 161 comments

DIALOGUE + CHECK-POINTS

01 community event (Farmers Market, Summer 2021)
02 agency meetings (DPD / CTA / CDOT)
03 committee meetings
01 public open house presentation (Spring 2022)

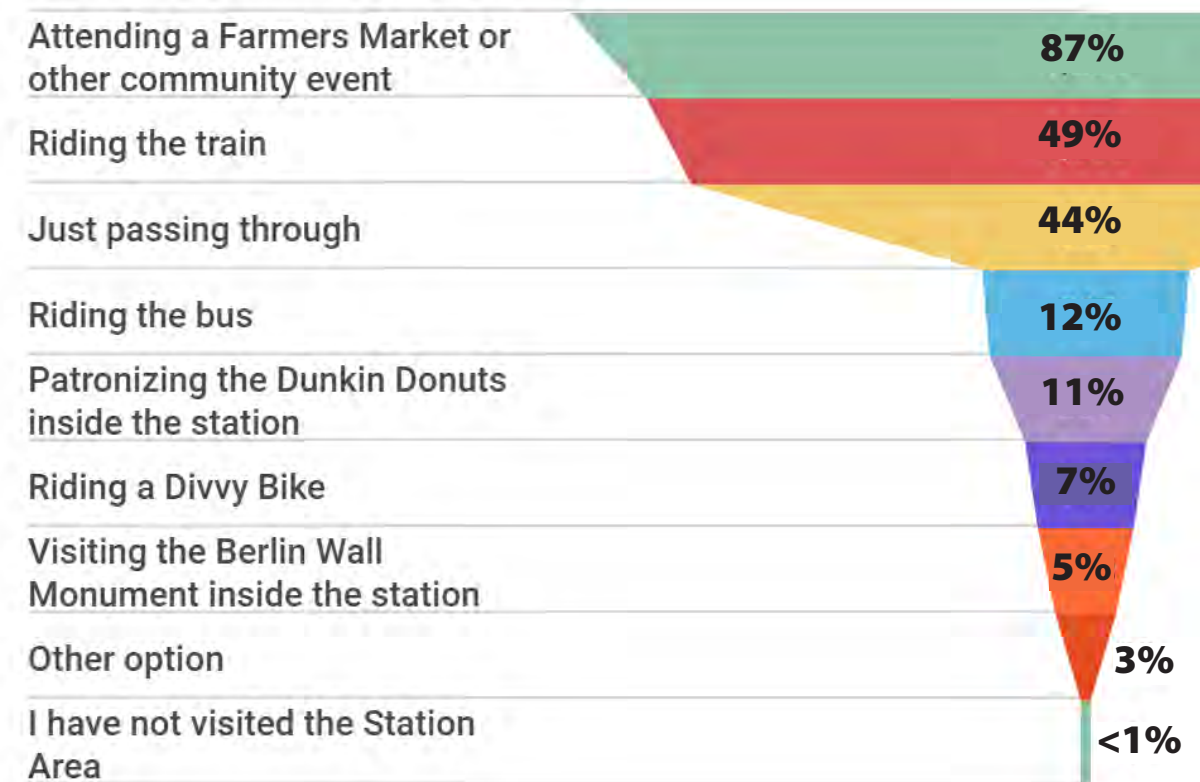
ESTABLISH THEMES + FINDINGS

Placemaking :: Urban Design :: Draft Concepts



Poll #1 Issues + Opportunities | Key Takeaways (June 9 - July 2, 2021)

WHAT BRINGS YOU TO THE CTA STATION AREA?



RANK YOUR CONCERNS (1= greatest concern)

1. Dark, enclosed environment under the "E".
2. Unsightly appearances.
3. General safety.
4. Accessibility and uneven pavement conditions.
5. Lack of greenery.
6. Availability of parking.

RANK YOUR PREFERRED DAY-TO-DAY FUNCTIONS (1= highest priority)

1. A safe + attractive place for commuters + neighbors to walk through.
2. A comfortable place for seating + gathering.
3. A vibrant place for local artists + vendors to buy + sell goods.
4. A welcoming place that offers food + drink.
5. A family friendly place that is attractive to kids.

RANK YOUR PREFERRED SPECIAL EVENTS (1= highest priority)

1. Holiday + community markets.
2. Themed artisan / cultural events.
3. Musical concerts + performances.
4. Activism + social justice events.

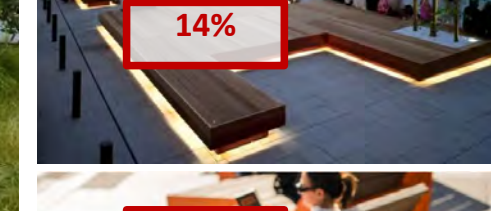


Poll #2 Visual Preference Survey | Key Takeaways (September 16 - October 10, 2021)

SELECT THE PLAZA SPACES THAT ARE MOST APPEALING



SELECT YOUR PREFERRED SEATING ELEMENTS



SELECT YOUR PREFERRED LANDSCAPE TREATMENTS



PERSPECTIVE RENDERING | WESTERN AVENUE + LELAND AVENUE

View 1 looking southeast to Transit Plaza + Leland Avenue Streetscape



PUBLIC INPUT ACTIVITY:

DURING THE MASTER PLAN WE HEARD ABOUT NEEDS FOR A MORE WELCOMING MULTI-MODAL GATEWAY STREET, INCLUDING PROTECTED BIKE LANES, HIGH-VISIBILITY CROSSWALKS, STREET TREES, PAVERS + LIGHTING.

USE POST-IT NOTES TO TELL US WHAT YOU LIKE OR WHAT YOU DON'T LIKE ABOUT THIS SPACE.

SUMMARY OF IMPROVEMENTS:

- Protected bike lanes include pavement markings, concrete barriers + signage.
- Intersection improvements include updated traffic signals, speed table, pedestrian refuge island, curb extensions, ADA ramps + crosswalks.
- Typical streetscape elements include lighting, tree plantings in grates, bike racks, trash receptacles + seating.

LINCOLN SQUARE BROWN LINE AREA IMPROVEMENTS



PERSPECTIVE RENDERING | LINCOLN AVENUE + LELAND AVENUE CURVE

View 2 looking southwest to the Lincoln Ave + Leland Ave curve



PUBLIC INPUT ACTIVITY:

DURING THE MASTER PLAN WE HEARD ABOUT NEEDS FOR A MORE WELCOMING MULTI-MODAL GATEWAY STREET, INCLUDING PROTECTED BIKE LANES, HIGH-VISIBILITY CROSSWALKS, STREET TREES, PAVERS + LIGHTING.

USE POST-IT NOTES TO TELL US WHAT YOU LIKE OR WHAT YOU DON'T LIKE ABOUT THIS SPACE.

SUMMARY OF IMPROVEMENTS:

■ Protected bike lanes include pavement markings, concrete barriers + signage.

■ Intersection improvements include updated traffic signals, speed table, pedestrian refuge island, curb extensions, ADA ramps + crosswalks.

■ Typical streetscape elements include lighting, tree plantings in grates, bike racks, trash receptacles + seating.

■ Raised intersection speed table and perimeter bollards at the Lincoln/Leland curve assist with traffic calming.

LINCOLN SQUARE BROWN LINE AREA IMPROVEMENTS



PERSPECTIVE RENDERINGS | THEME A OLDE WORLD

INTERIOR PLAZA | View 3 looking northeast



THEME A OLDE WORLD

Theme A honors Lincoln Square's charming European streetscapes, including cobbled pavements, traditional lighting, decorative metals, classical furnishings and flowering plantings.



UNDER THE 'L' TRACKS | View 4 looking west



PUBLIC INPUT ACTIVITY:

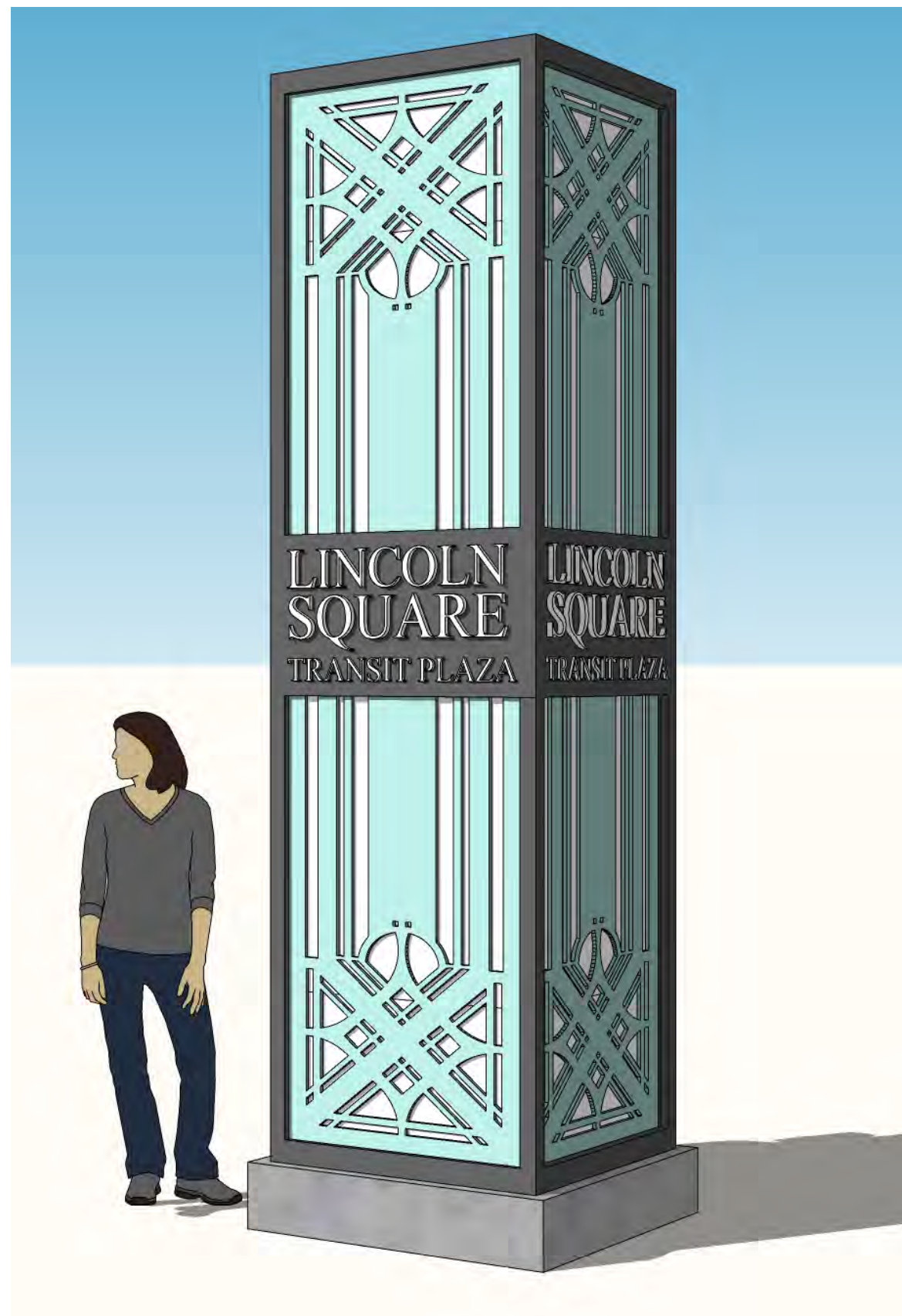
DURING THE MASTER PLAN WE HEARD ABOUT NEEDS FOR ENHANCED SPACES AT THE TRANSIT PLAZA AND UNDER THE 'L' TRACKS.

USE POST-IT NOTES TO TELL US WHAT YOU LIKE OR WHAT YOU DON'T LIKE ABOUT THESE SPACES.

MATERIALS | THEME A OLDE WORLD

THEME A MATERIALS

PUBLIC INPUT ACTIVITY:
USE POST-IT NOTES TO TELL US WHAT YOU LIKE OR WHAT YOU DON'T LIKE ABOUT THESE MATERIALS.



ENTRY GATEWAY



PLANTER RAILING



BOLLARD



BIKE RACK

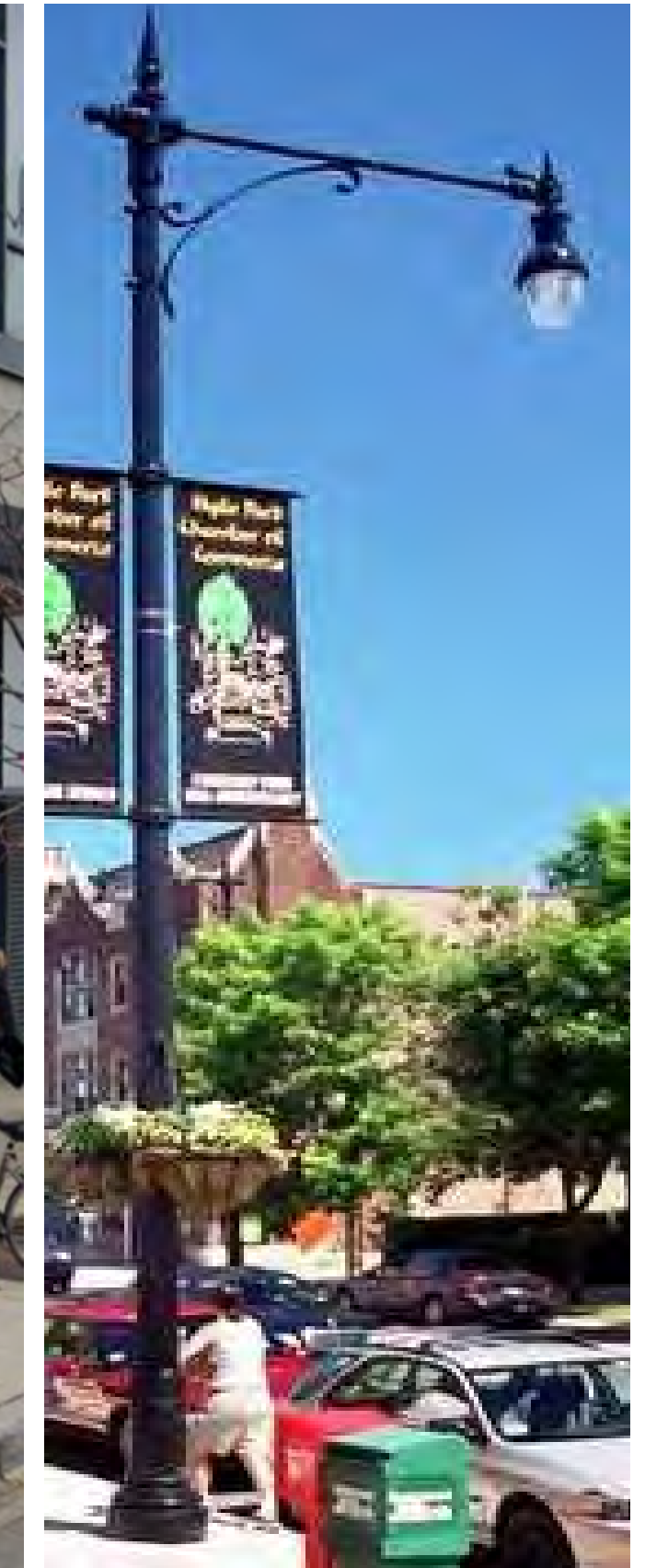


FLUTED FESTOON POLE WITH STRING LIGHTING

OTHER STREETSCAPE + FURNISHINGS ITEMS



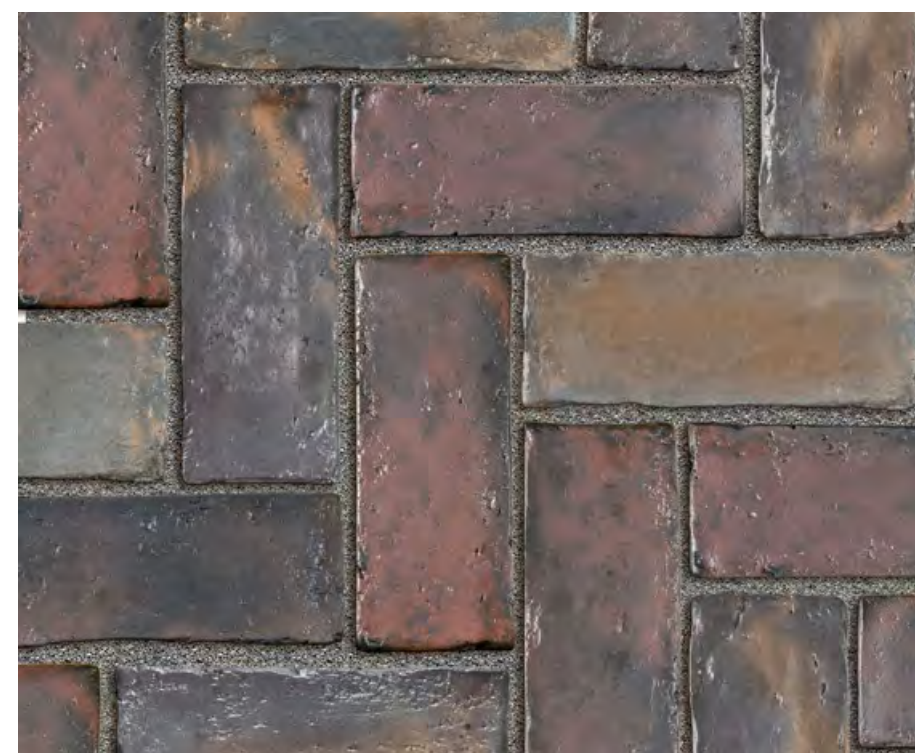
CHICAGO DOUBLE ACORN LIGHTPOLE



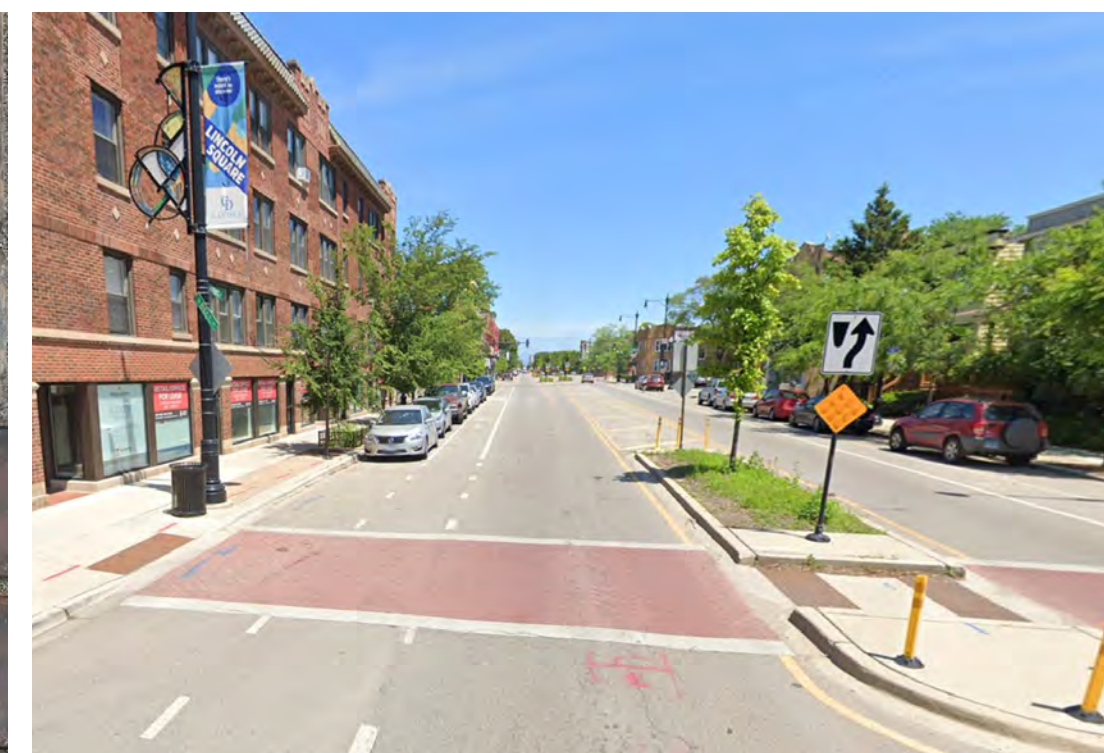
CHICAGO GATEWAY LIGHTPOLE



PRECAST CONCRETE PAVER BAND + PAVER FIELD, REFERENCES HISTORIC STREET



COLORLED/TEXTURED CROSSWALK



BENCH



TRASH RECEPTACLE



TREE GRATE



PERSPECTIVE RENDERINGS | THEME B CONTEMPORARY ARTS

INTERIOR PLAZA | View 3 looking northeast



THEME B CONTEMPORARY ARTS

Theme B celebrates Lincoln Square's colorful businesses and arts districts, including vibrant paving, contemporary lighting, modern furnishings and flowering plantings.



UNDER THE 'L' TRACKS | View 4 looking west



PUBLIC INPUT ACTIVITY:

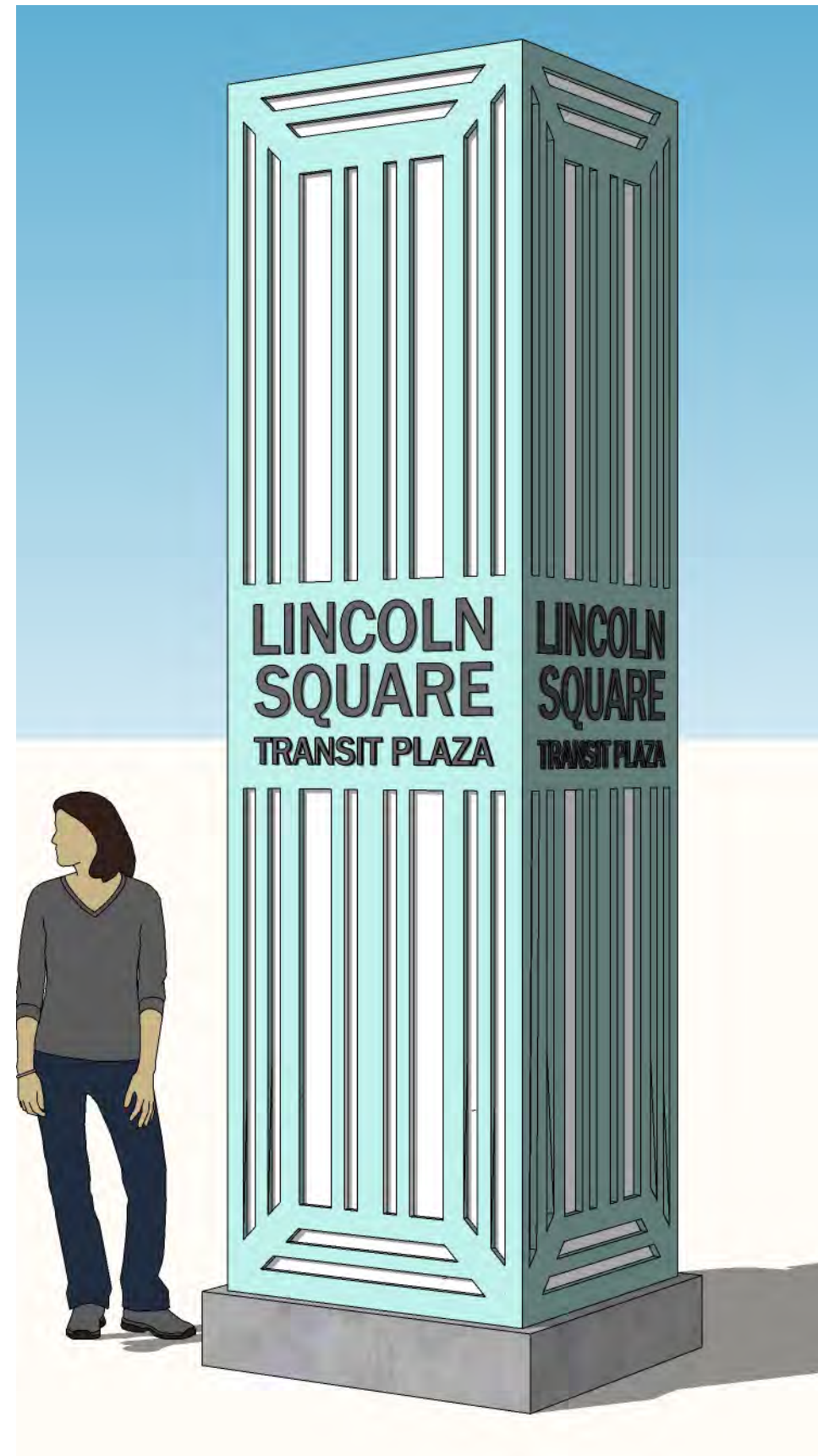
DURING THE MASTER PLAN WE HEARD ABOUT NEEDS FOR ENHANCED SPACES AT THE TRANSIT PLAZA AND UNDER THE 'L' TRACKS.

USE POST-IT NOTES TO TELL US WHAT YOU LIKE OR WHAT YOU DON'T LIKE ABOUT THESE SPACES.

MATERIALS | THEME B CONTEMPORARY ARTS

THEME B MATERIALS

PUBLIC INPUT ACTIVITY:
USE POST-IT NOTES TO TELL US WHAT YOU LIKE OR WHAT YOU DON'T LIKE ABOUT THESE MATERIALS.



ENTRY GATEWAY



BOLLARD

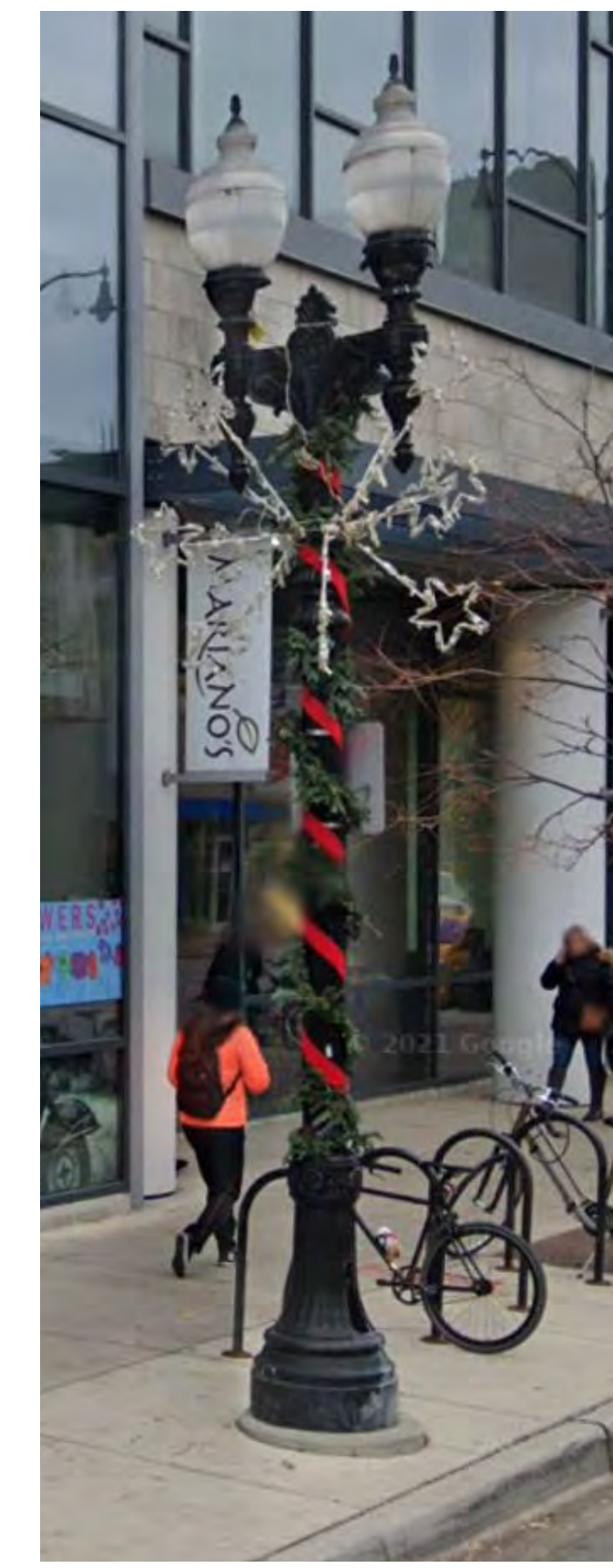


BIKE RACK

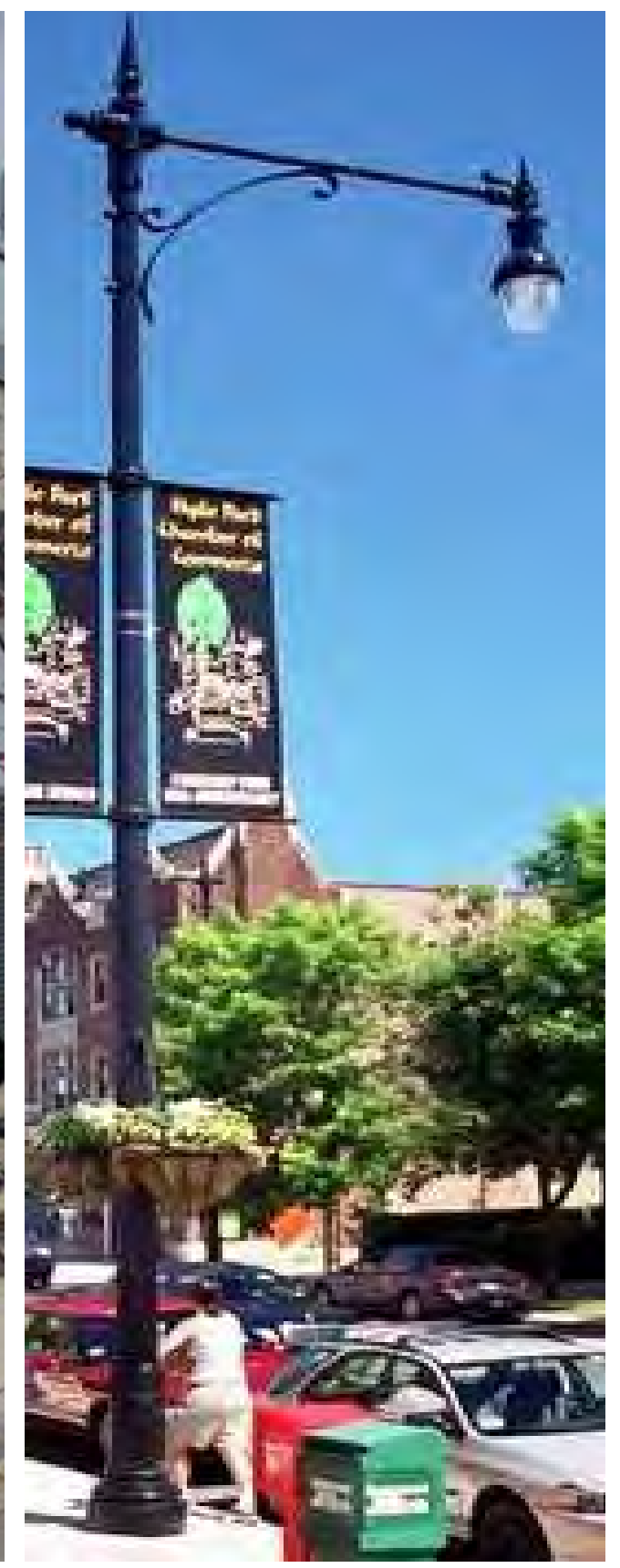


SMOOTH FESTOON POLE WITH STRING LIGHTING

OTHER STREETScape + FURNISHINGS ITEMS



CHICAGO DOUBLE ACORN LIGHTPOLE



CHICAGO GATEWAY LIGHTPOLE



PRECAST CONCRETE PAVER PATTERN, LINEAR PATTERN + ACCENT BANDS



COLORED/TEXTURED CROSSWALK



CONCRETE SEATWALL WITH INTEGRATED SEATING + PLANTINGS



FREESTANDING PRECAST CONCRETE BENCH occurs under the 'L' Tracks Pedestrian Way



TRASH RECEPTACLE



TREE GRATE

LINCOLN SQUARE BROWN LINE AREA IMPROVEMENTS



VOTING BOARD

THEME A OLDE WORLD



THEME B CONTEMPORARY ARTS



VOTE HERE FOR
THEME A

VOTE HERE FOR
THEME B

USE (1) STICKER TO INDICATE YOUR PREFERRED THEME

USE (1) STICKER TO INDICATE YOUR PREFERRED THEME