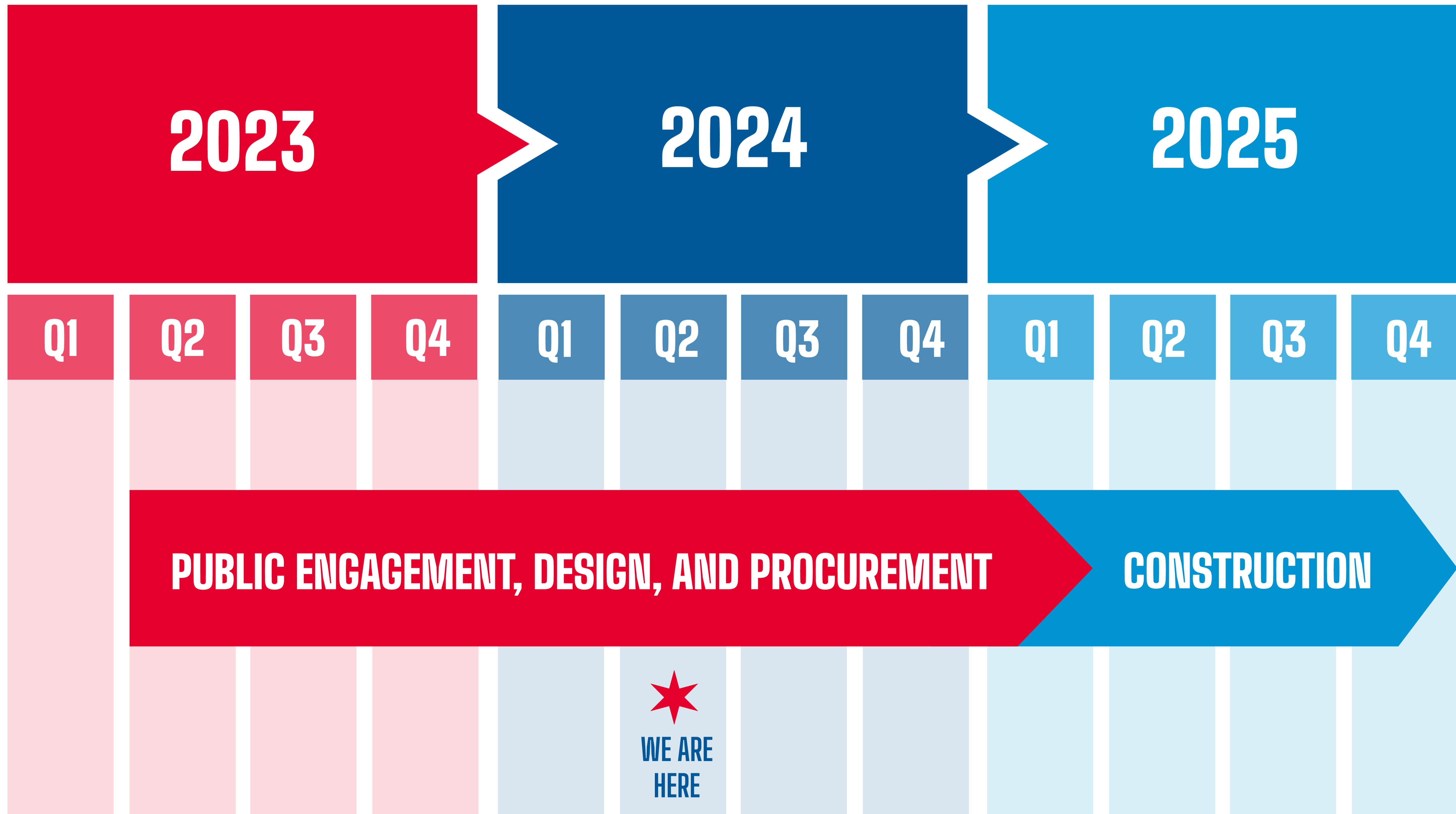


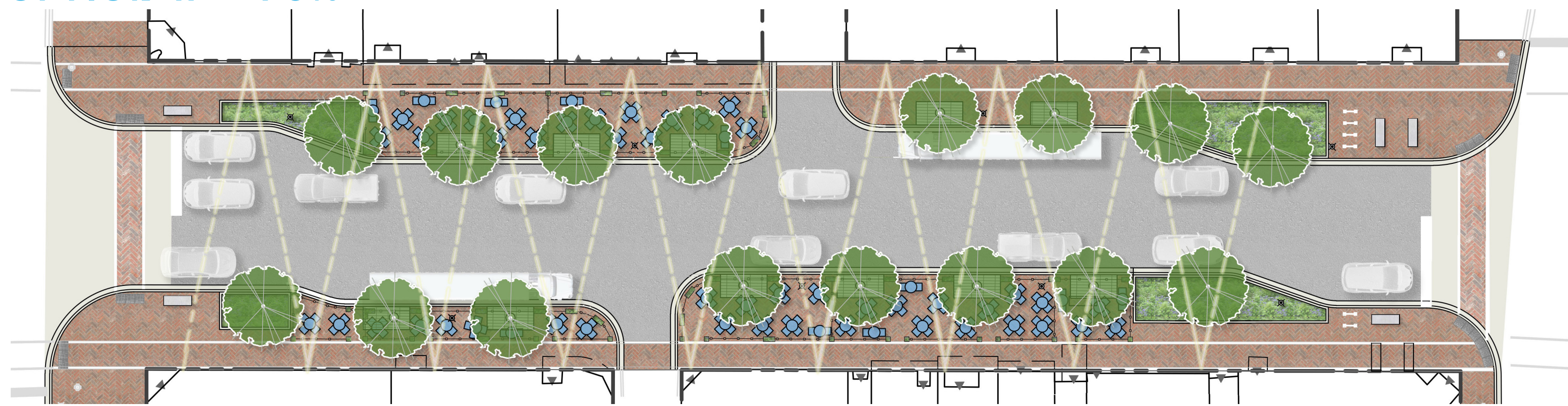
PROJECT SCHEDULE



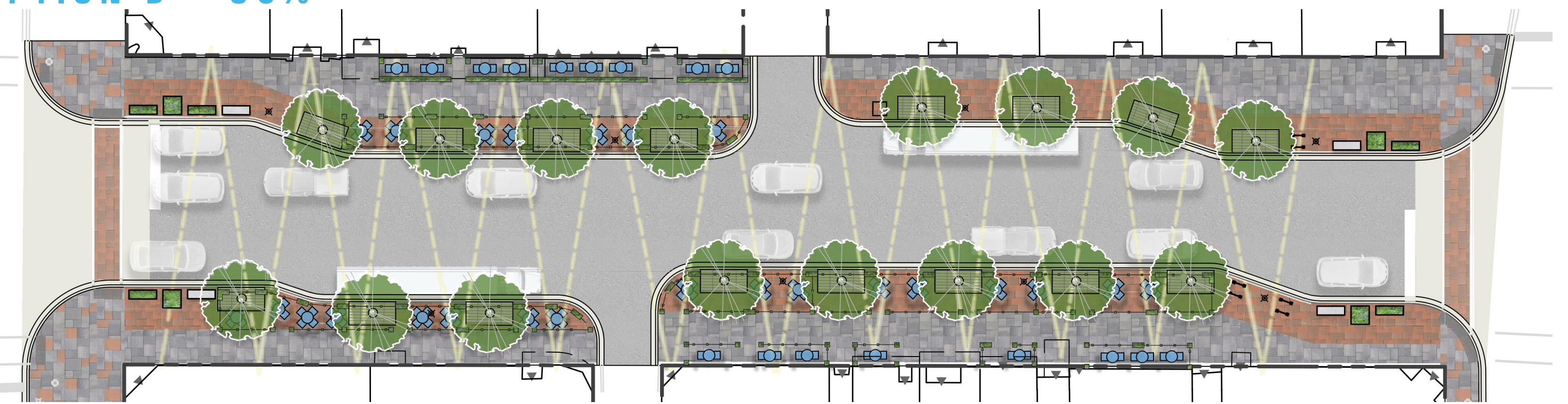
DIVISION STREETScape IMPROVEMENTS

ENGAGEMENT FEEDBACK

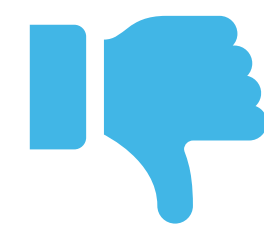
OPTION A - 70%



OPTION B - 30%



COMMENT RECAP



GENERAL SUPPORT TO IMPROVE THE STREET

OVERHEAD FESTOON LIGHTING

INCREASING PEDESTRIAN SAFETY

MAKING THE STREET MORE FRIENDLY FOR LUNCH AND DINNER OPTIONS RATHER THAN EXCLUSIVELY FOR NIGHTLIFE

PAVER SIDEWALKS IMPROVE THE LOOK OF THE STREET

INCREASING NIGHTLIFE COULD LEAD TO MORE CRIME

REMOVAL OF PARKING

BENCHES WILL INCREASE LOITERING

REMOVAL OF EASTBOUND LEFT TURN BAY AT DIVISION AND STATE

REMOVING BUS STOPS

NOT GOING FAR ENOUGH TO IMPROVE PEDESTRIAN EXPERIENCE

LOADING ZONE PLACEMENT AFFECTS SOME OUTDOOR DINING

Met with Commander Barz & police district 18 to discuss enforcement protocols

No net parking loss

Benches have been removed

Traffic analysis determined left bay not required. Using the space to expand sidewalk & plantings

No bus stops will be removed. Minor bus stops moves around the corner or across the street.

The paving pattern will designate a wider 8' pedestrian clear zone where feasible.

Several loading zone options were investigated. Current design balances needs and prioritizes current businesses.

FURNISHINGS

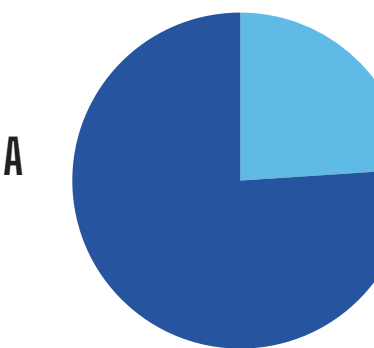
OPTION A

OPTION B

PAVERS



Option A
77%

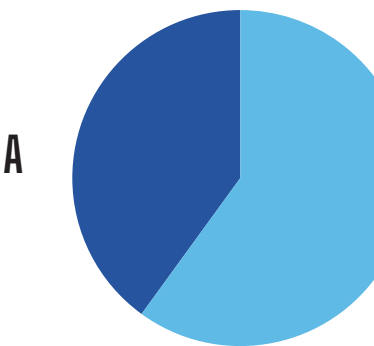


Option B
23%

PLANTERS



Option A
40%

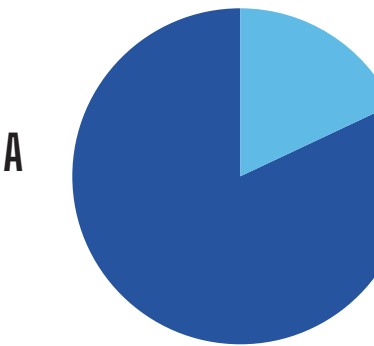


Option B
60%

SEATING*



Option A
82%



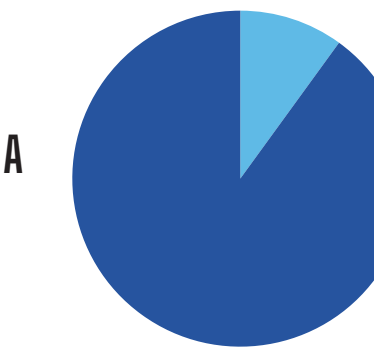
Option B
18%

*Though voted on, benches were removed from plans based on feedback.

TRASH RECEPTACLE



Option A
90%

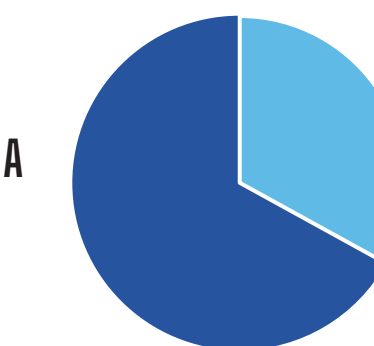


Option B
10%

BIKE RACKS



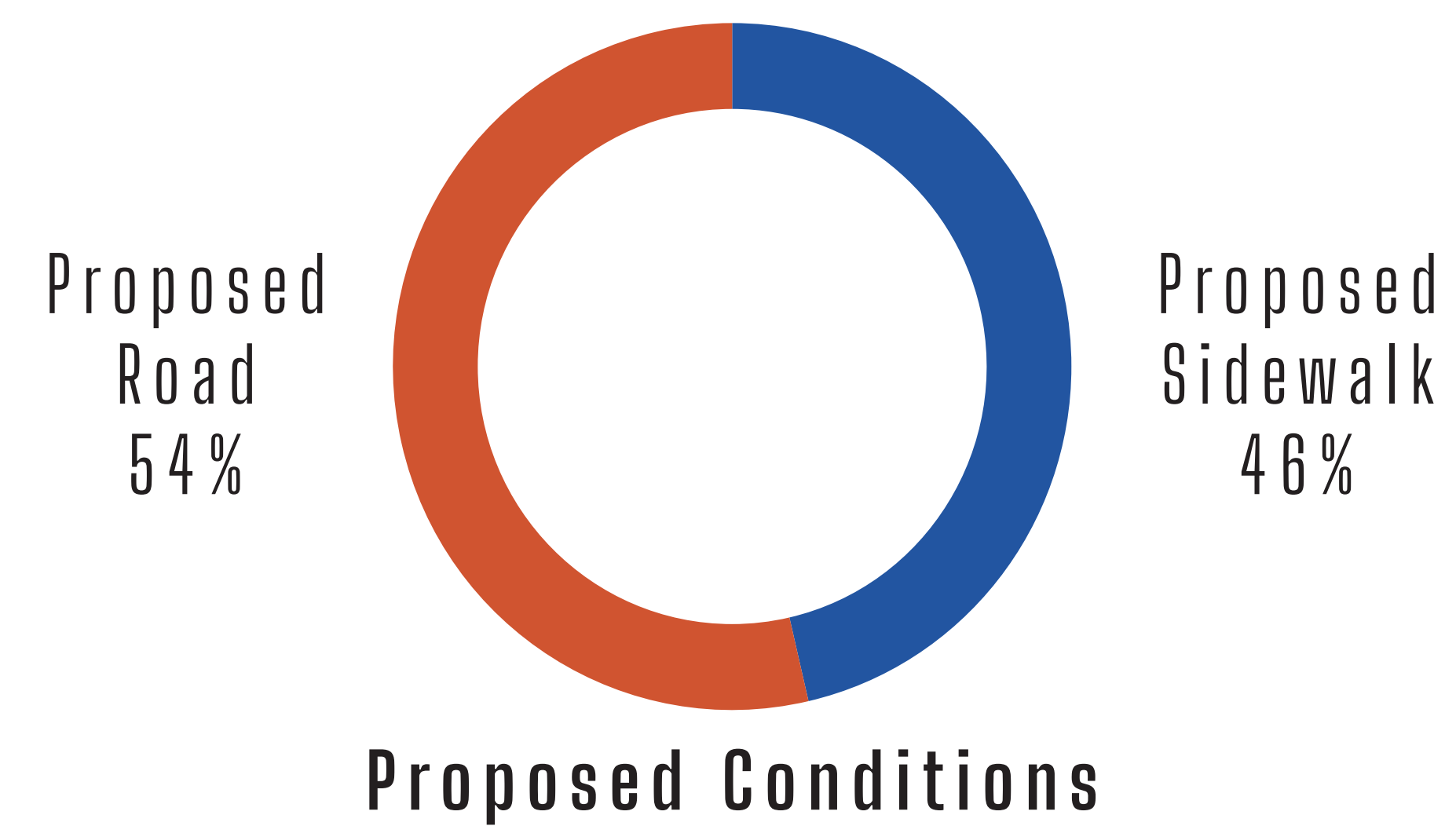
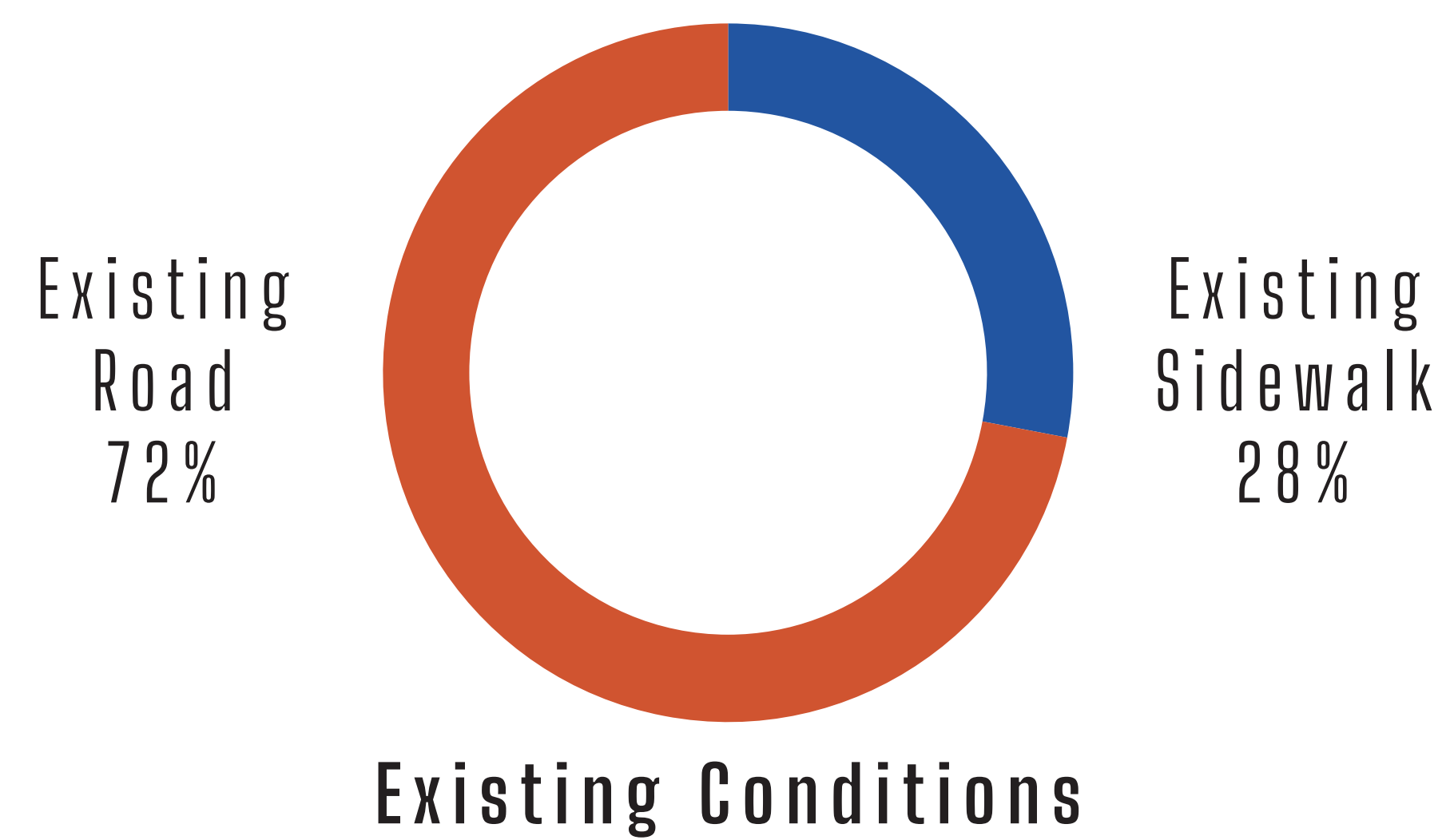
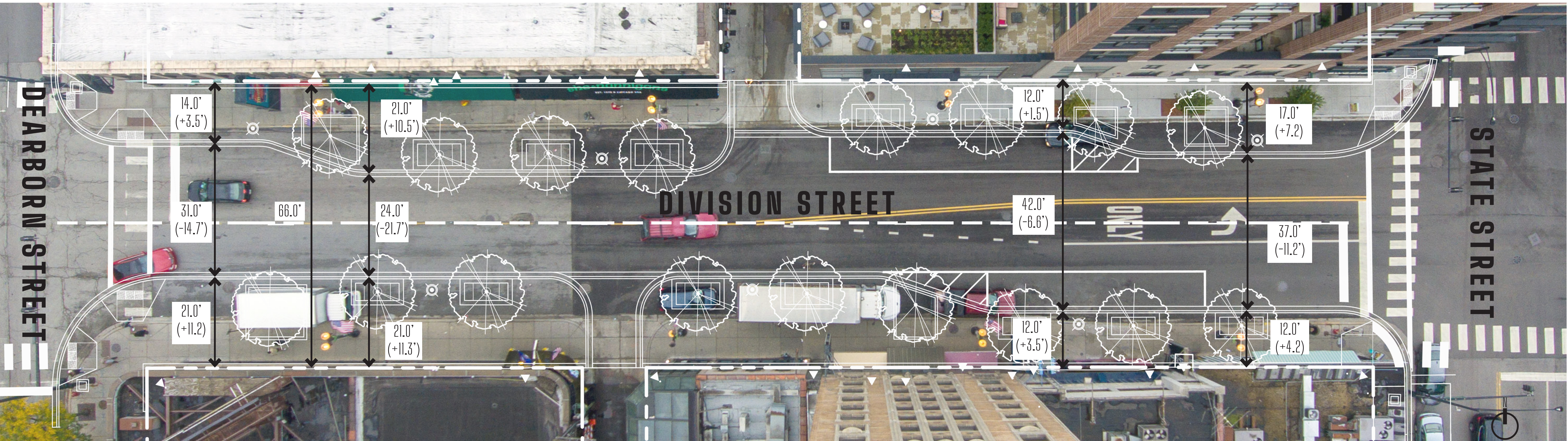
Option A
67%



Option B
33%

DIVISION STREETScape IMPROVEMENTS

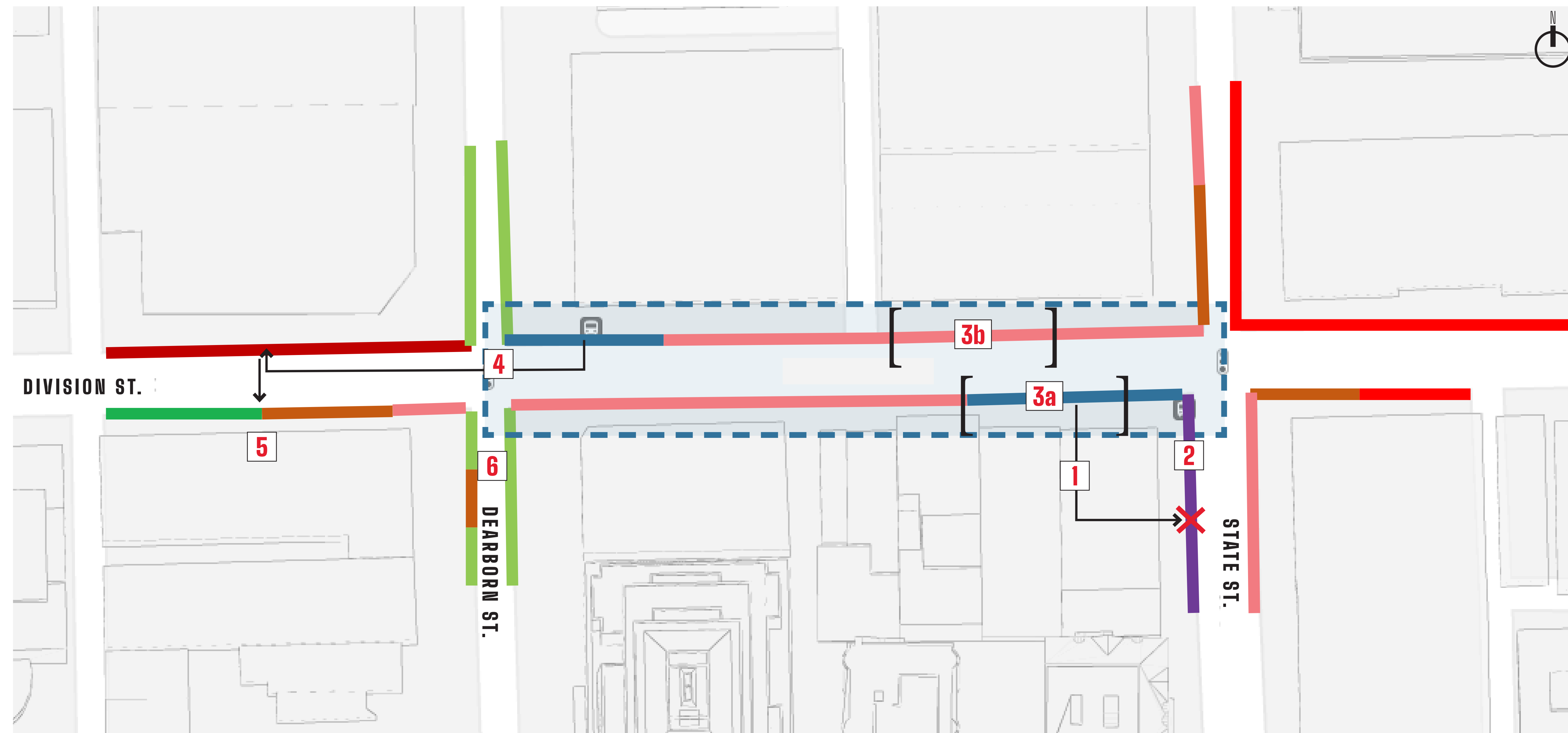
STREET LAYOUT CHANGES



DIVISION STREETScape IMPROVEMENTS

CURB REGULATION CHANGES

PROPOSED CHANGES TO EXISTING CURB REGULATIONS



PROPOSED CHANGES

- 1 Eastbound Division St **bus stop** moves around the corner to State St
- 2 Remove **taxi stand**
- 3 Reduce loading zone to 2 designated layby areas
- 4 Move westbound Division St **bus stop** at Dearborn to the far side of the intersection
- 5 Move commercial metered zone across the street
- 6 Insert **15-minute loading zones** on both sides of the street for ride shares and taxis

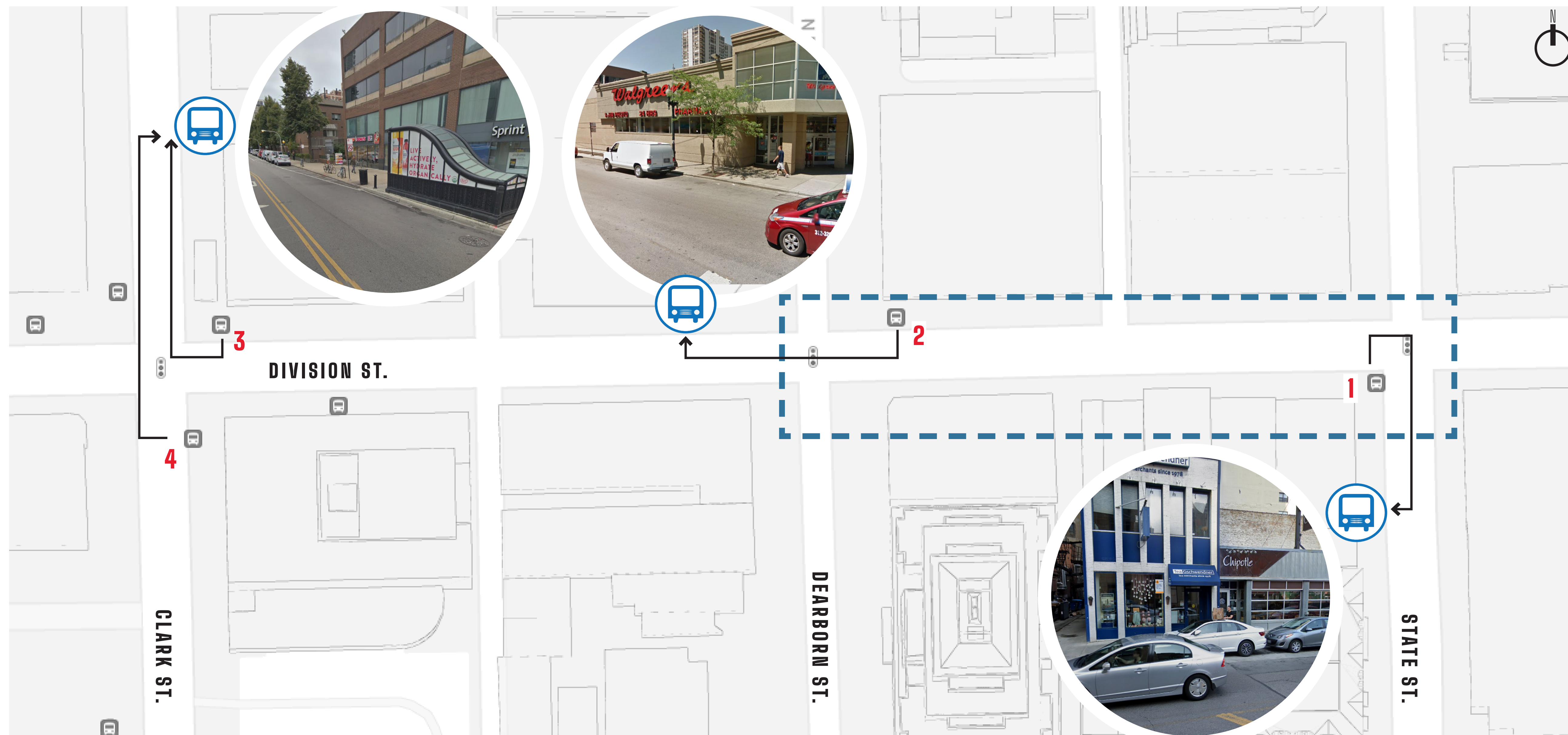
EXISTING CURB REGULATIONS

- BUS STOP
- TAXI STAND
- PARKING
- METERED PARKING
- NO PARKING / TOW ZONE
- COMMERCIAL METERED ZONE
- 15 MIN. LOADING ZONE
- NO STANDING / NO STOPPING
- - - PROJECT AREA

DIVISION STREETScape IMPROVEMENTS

BUS STOP RELOCATIONS

PROPOSED CHANGES TO BUS LOCATIONS



LEGEND

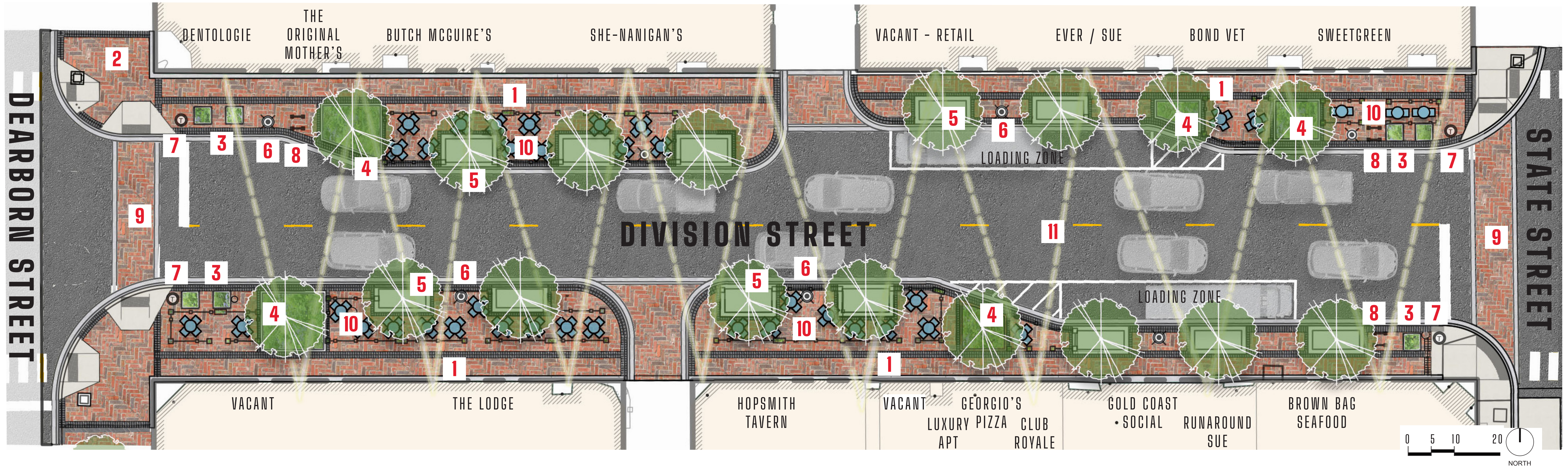
- 1** Eastbound 36 bus stop moves around the corner to State St.
- 2** Westbound 36 bus stop at Dearborn moves to the far side of the intersection.
- 3** Westbound 36 bus stop on Division at Clark moves around the corner onto Clark St.
- 4** Northbound 22 bus stop moves across the street to the NE corner of Division and Clark, combining with the relocated 36 westbound stop, adjacent to the CTA Red Line station entrance.

LEGEND

-  PROJECT AREA
-  NEW BUS STOP LOCATION

DIVISION STREETScape IMPROVEMENTS

FINAL DESIGN

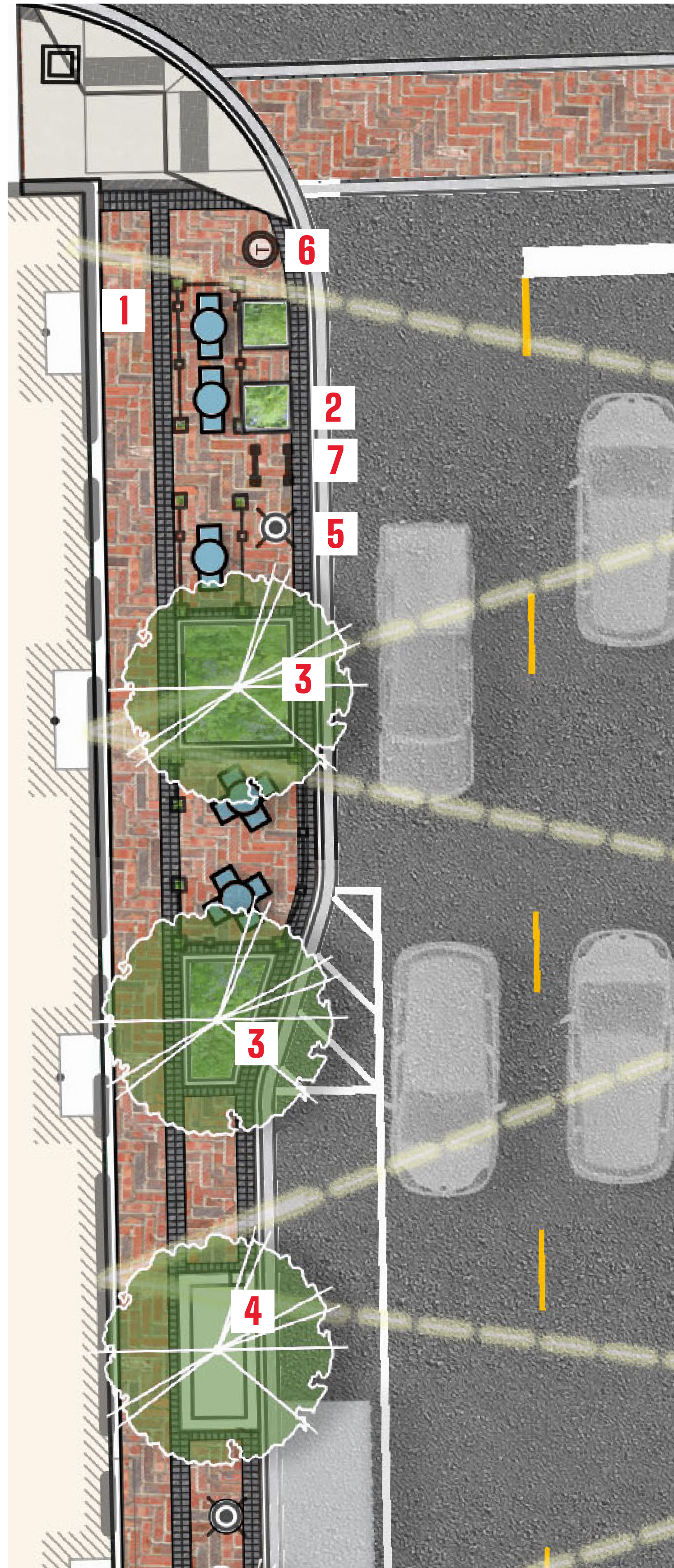


DESIGN FEATURES

- 1** Wider sidewalks for better pedestrian and dining experience.
- 2** Red clay pavers in herringbone pattern for sidewalks and alley apron.
- 3** Raised planters for seasonal plants to be rotated during summer months and maintained by Division St. Businesses
- 4** Curb planters bookend the street and visible from the intersections. Planters have trees, flowers, and shrubs and are maintained by Division St. Businesses
- 5** Shade trees in cast iron tree grates line both sides of the street.
- 6** Double hanging baskets attached to street lightpoles. Seasonal plants to be rotated during the summer months and maintained by Division St. Businesses.
- 7** Trash receptacles provided at intersections.
- 8** Bike racks provided at intersections for business patrons.
- 9** Intersection crossing shortened for safer crossings. Crosswalk designated with clay pavers.
- 10** Outdoor dining - cafe tables and railings for reference only, final design to be completed by business owners
- 11** Festoon string lighting strung across the street, for reference only final design to be completed by business owners

DIVISION STREETScape IMPROVEMENTS

SITE FURNISHINGS



CLAY PAVERS



PLANTER 1



PLANTER 2



TREE GRATE



HANGING BASKET



TRASH RECEPTACLE

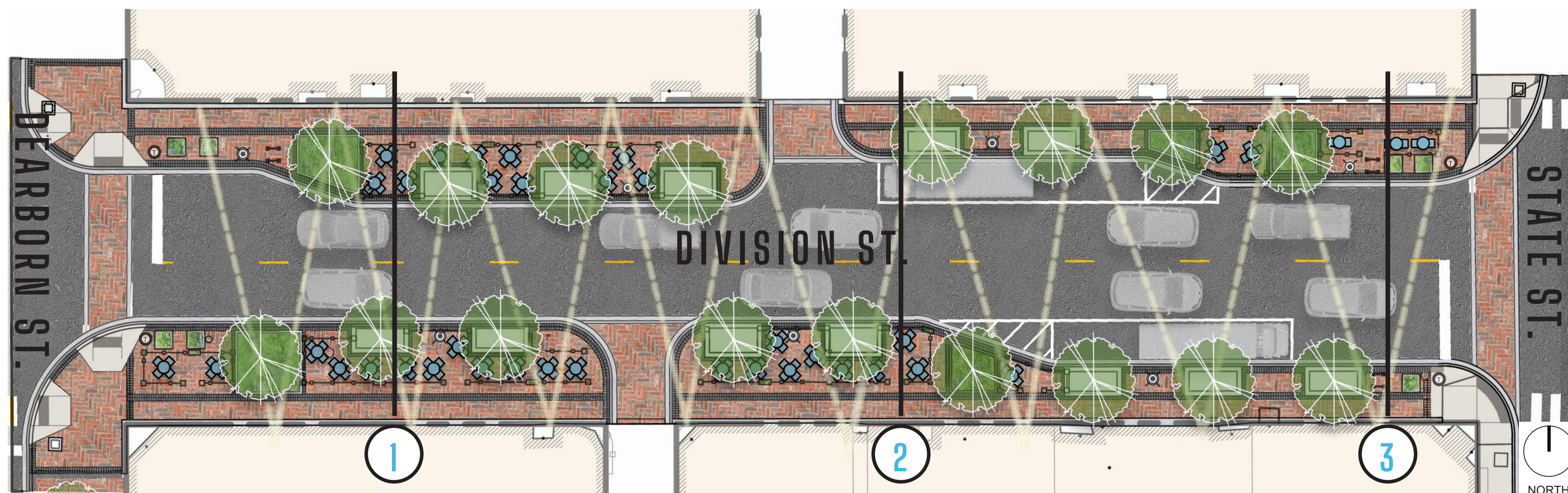


BIKE RACK

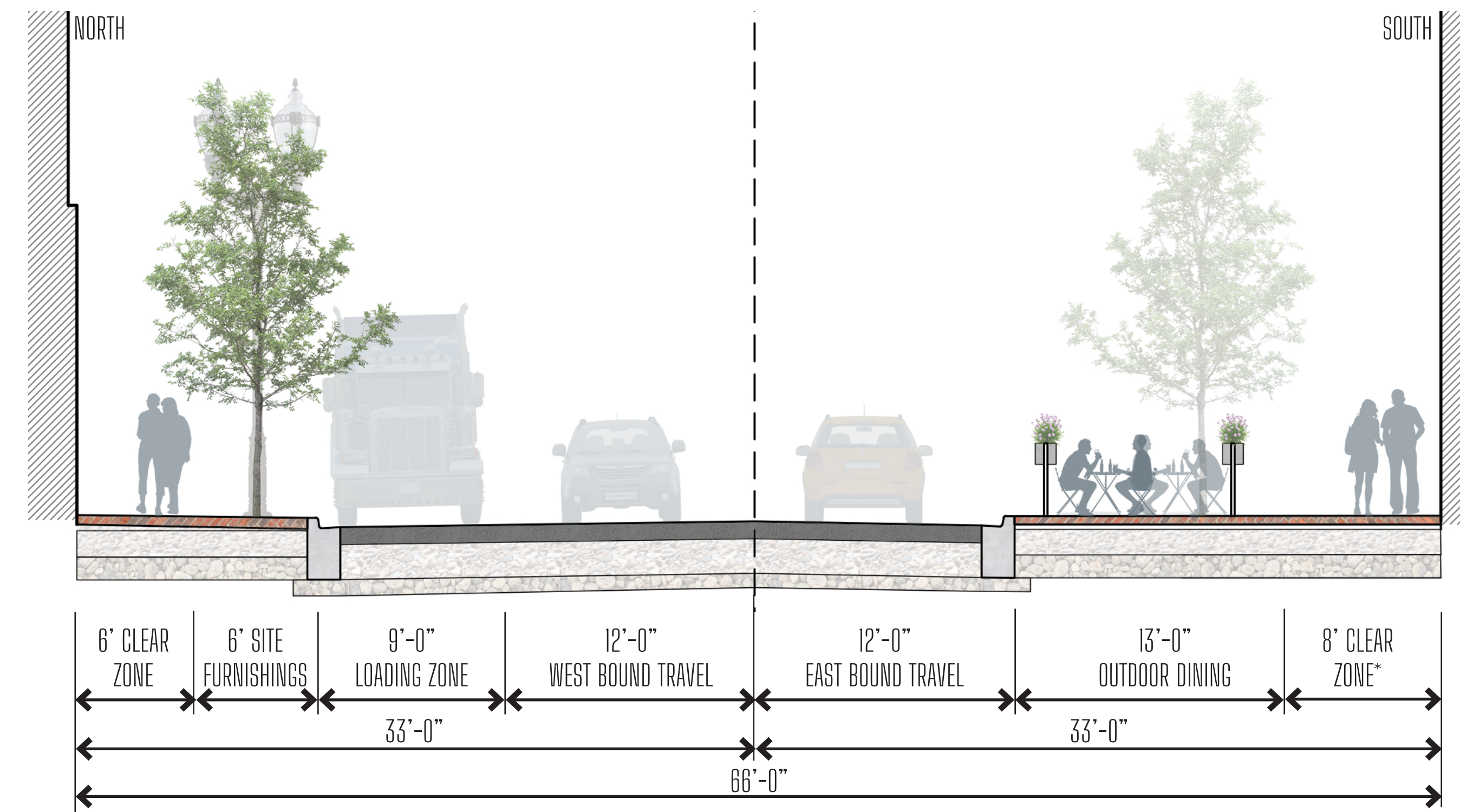


TYPICAL SECTIONS – LOOKING EAST

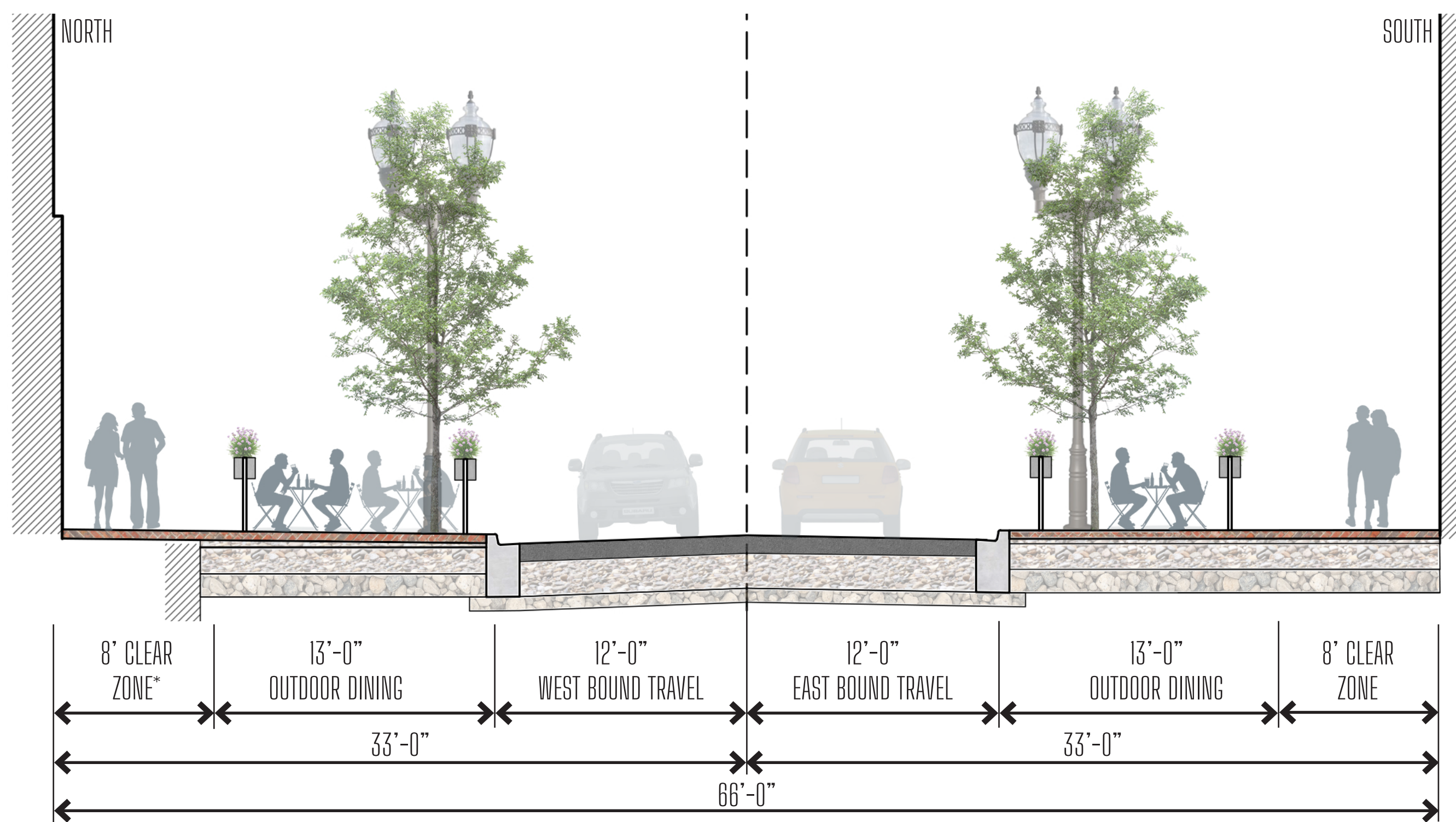
PLAN VIEW



SECTION 2, LOOKING EAST

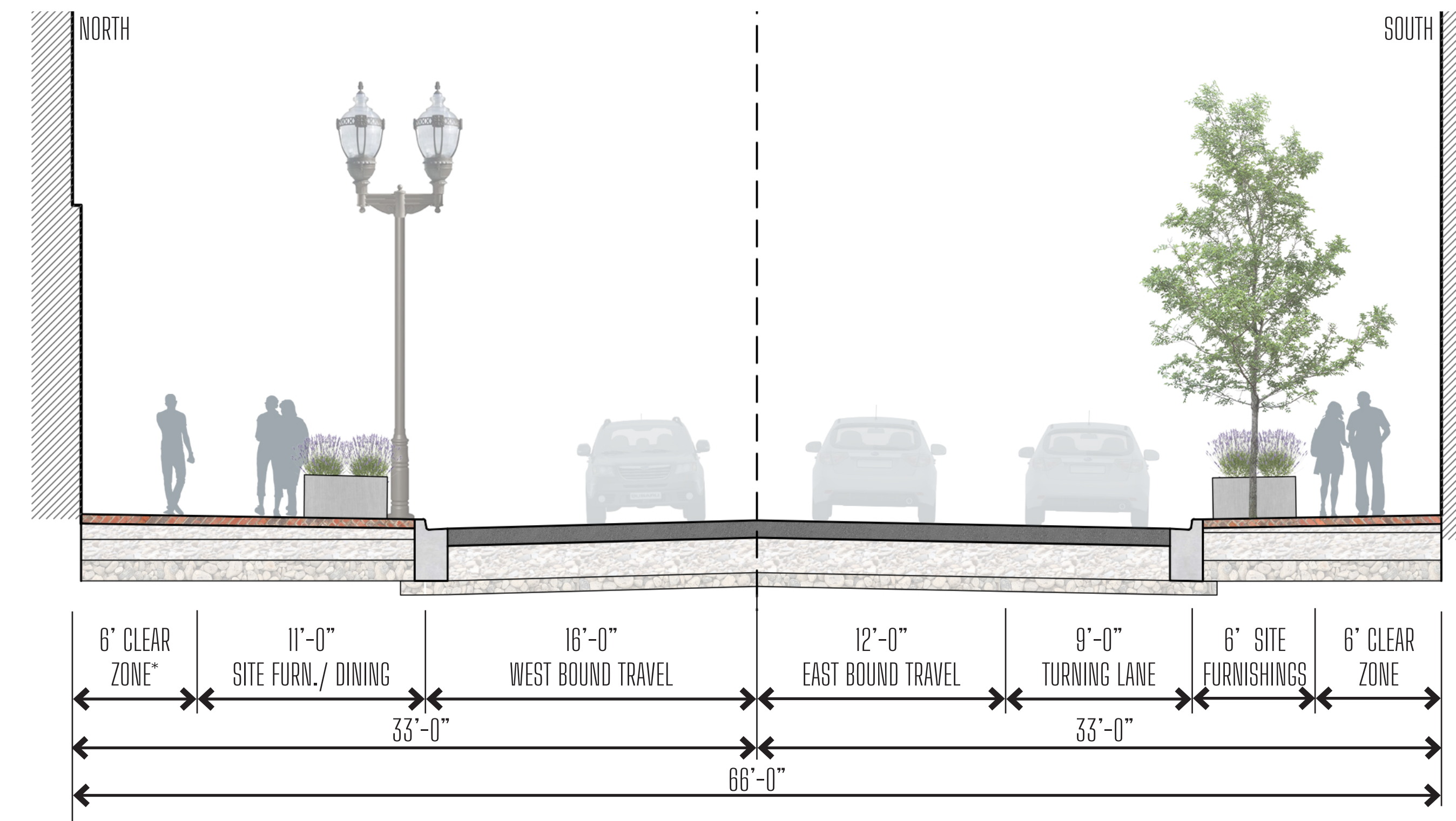


SECTION 1, LOOKING EAST



*CLEAR PATH VARIES 6'-8', DEPENDING ON THE TREE LOCATIONS

SECTION 3, LOOKING EAST



DIVISION STREETScape IMPROVEMENTS

PROPOSED VIEW LOOKING WEST



Proposed View - Mid-block looking west



Existing view



Proposed View - State Street intersection looking west



Existing view

DIVISION STREETScape IMPROVEMENTS

PROPOSED VIEW LOOKING EAST



Proposed View - Mid-block looking east



Existing view



Proposed View - Dearborn Street intersection looking east



Existing view

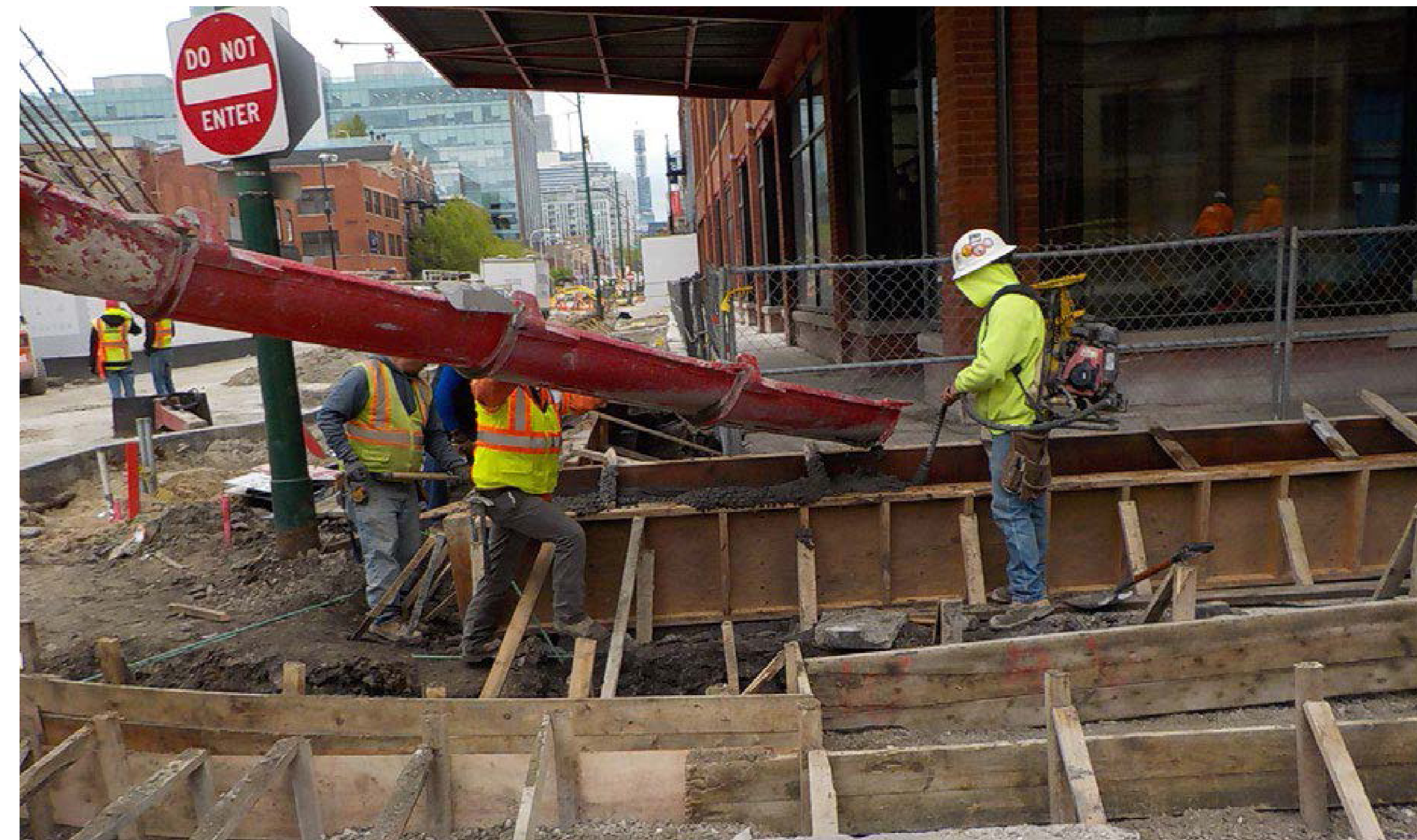
DIVISION STREETScape IMPROVEMENTS

CONSTRUCTION EXPECTATIONS

Throughout construction, Division Street will remain open to motorists and pedestrians, and access to businesses and residences will be maintained. To keep the street open to traffic, parking, and loading will not be allowed in the area of active construction. The CTA 36 route bus stops on this block will move to adjacent blocks permanently at the start of construction. The Farmers Market will not be set up on this block during construction. Updates on traffic changes will be provided throughout construction.

Steps:

1. Construction flyers will be distributed before construction starts to inform the community.
2. The construction office will be set up near the construction site and will hold weekly construction meetings. A CDOT representative will be available to discuss construction concerns with impacted residents and business owners.
3. Maintenance of traffic- will include setting up signs, traffic cones, and barricades, and fencing off construction and staging areas.
4. Anticipate Construction to Start Spring of 2025
5. Anticipate Construction Completion End of 2025



Example of sidewalk construction in the Fulton Market neighborhood

DIVISION STREETScape IMPROVEMENTS