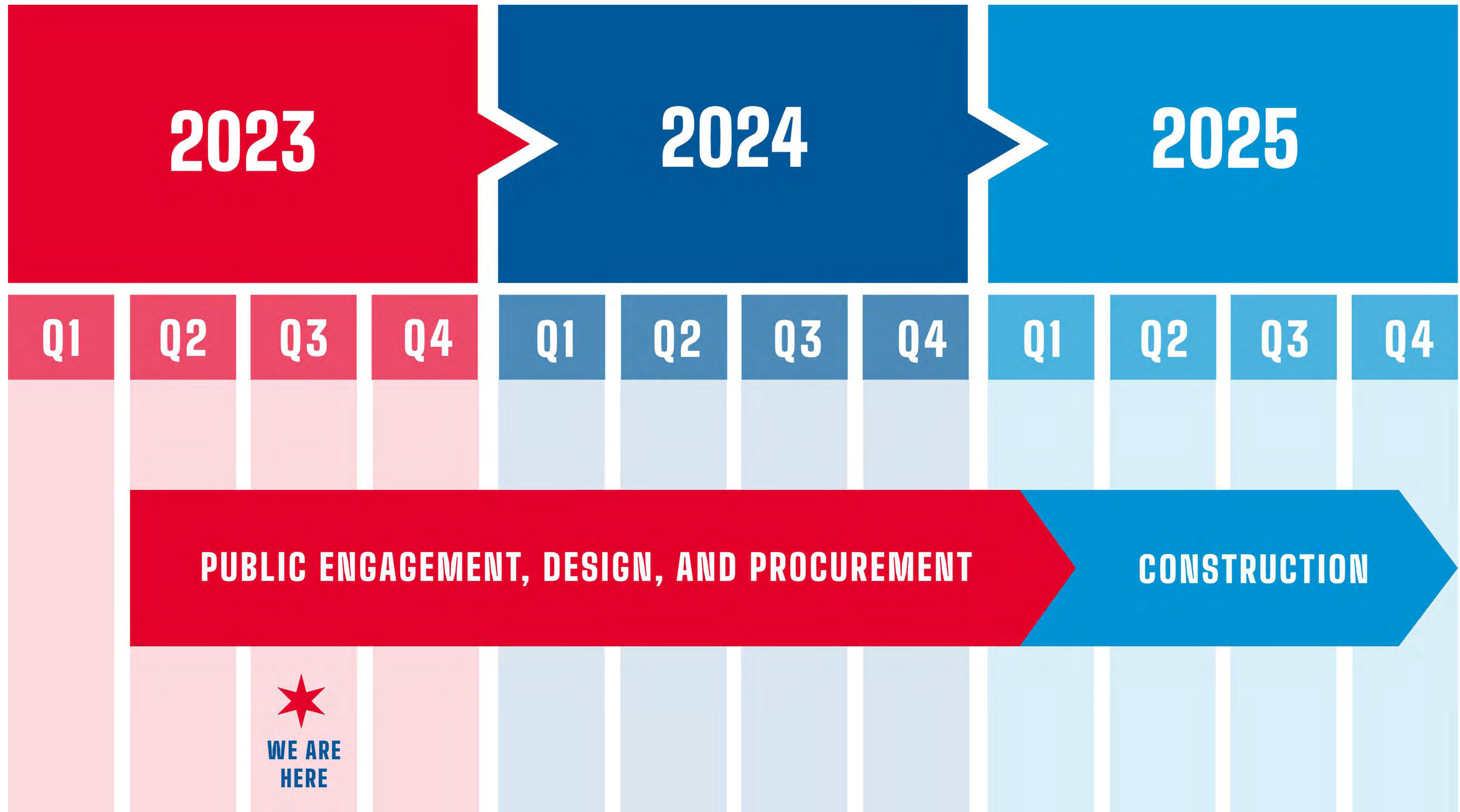


# PROJECT SCHEDULE



DIVISION STREETScape IMPROVEMENTS



# PROJECT SCOPE

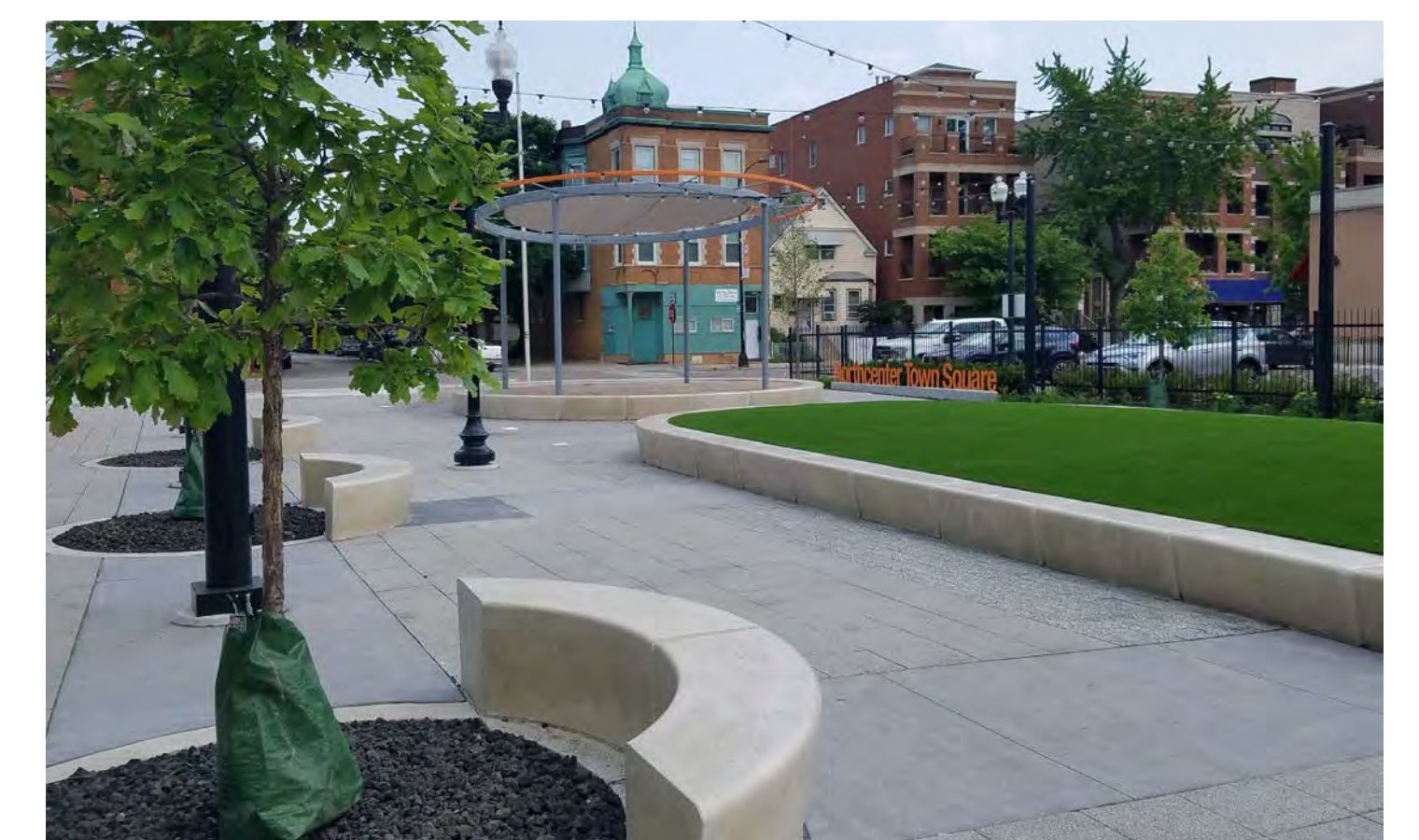
The streetscape will consist of infrastructure, pedestrian safety, and placemaking improvements with the goal of creating a unified, safe, walkable, and attractive commercial destination. The streetscape will include ROW improvements from building face to building face.

## The Project Includes:

- ★ Public outreach, placemaking and urban design strategy, concept design & engineering, detailed design & engineering, and construction of the corridor.

## The Improvements Includes:

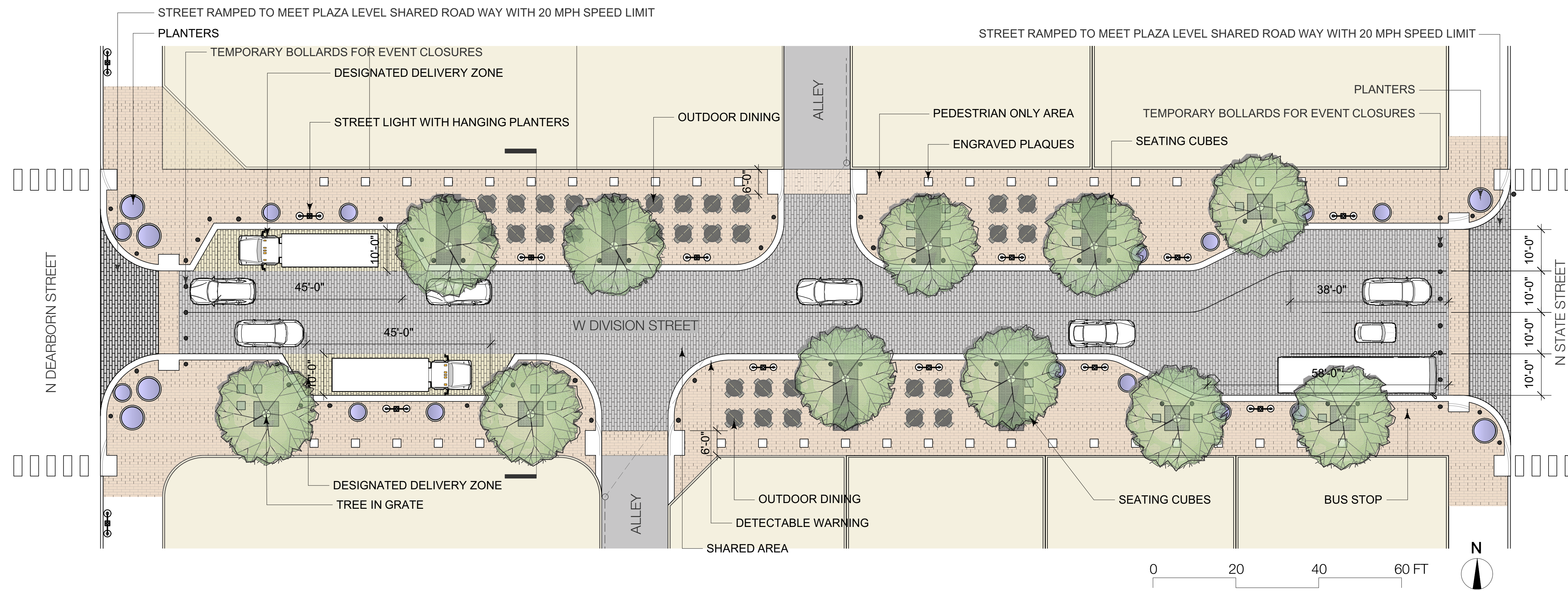
- ★ Roadway geometry and intersection improvements (wider sidewalks where feasible)
- ★ New sidewalk, ADA ramps, curb extensions, curb, gutter, and crosswalks
- ★ Curb extensions and laybys for loading zones
- ★ Pavement markings
- ★ Full width resurfacing, pavement patching, drainage improvements
- ★ New street lighting
- ★ Paver Parkways, street trees, landscaping
- ★ Site furniture and seating areas for events and everyday use





# CONCEPTUAL PLANS (BARKER EVANS)

The project aims to advance the design of the concept shown below, which was initially created by Barker Evans in 2017.



**October 2017**

Adds sidewalk space by removing excess roadway space

Takes light poles & other infrastructure out of walking path

Adds pavers, trees, and other design elements

Creates designated loading zone cut-outs

## DIVISION STREETScape IMPROVEMENTS



# DIVISION STREET TODAY

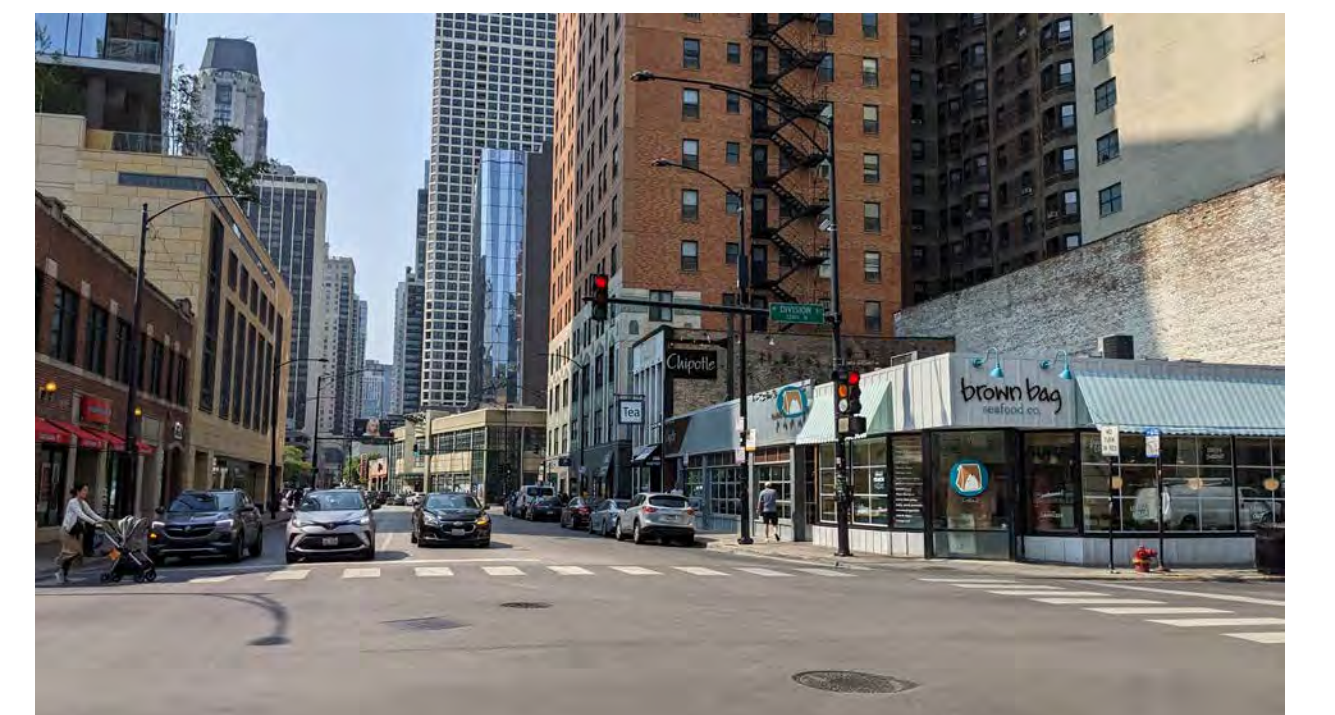
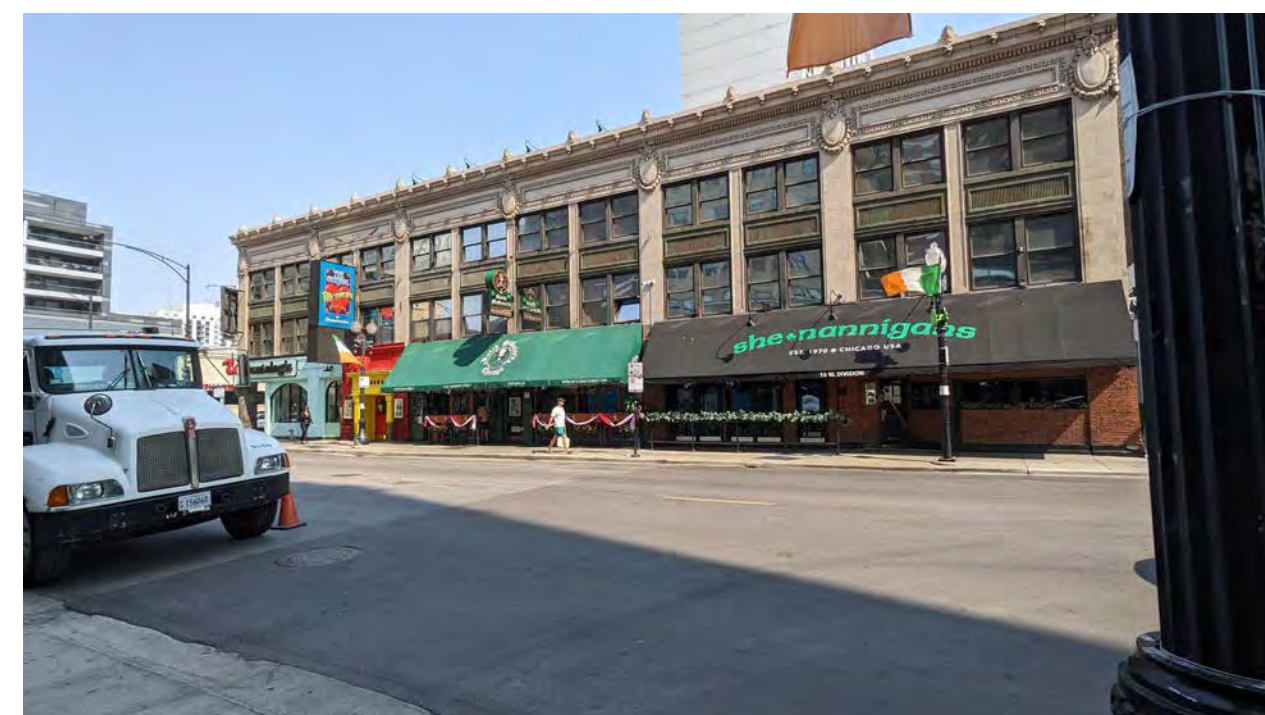
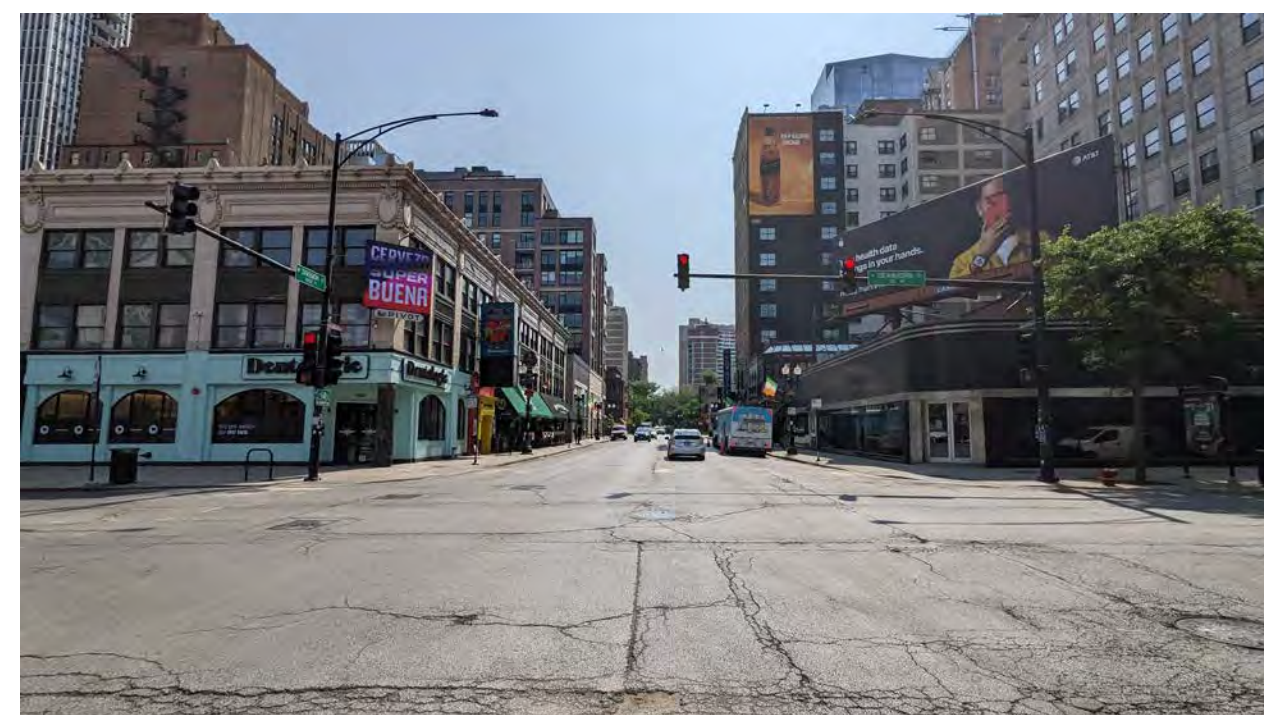
## Division Street – North Side



## Division Street – South Side



## Existing Conditions:



# DIVISION STREETScape IMPROVEMENTS

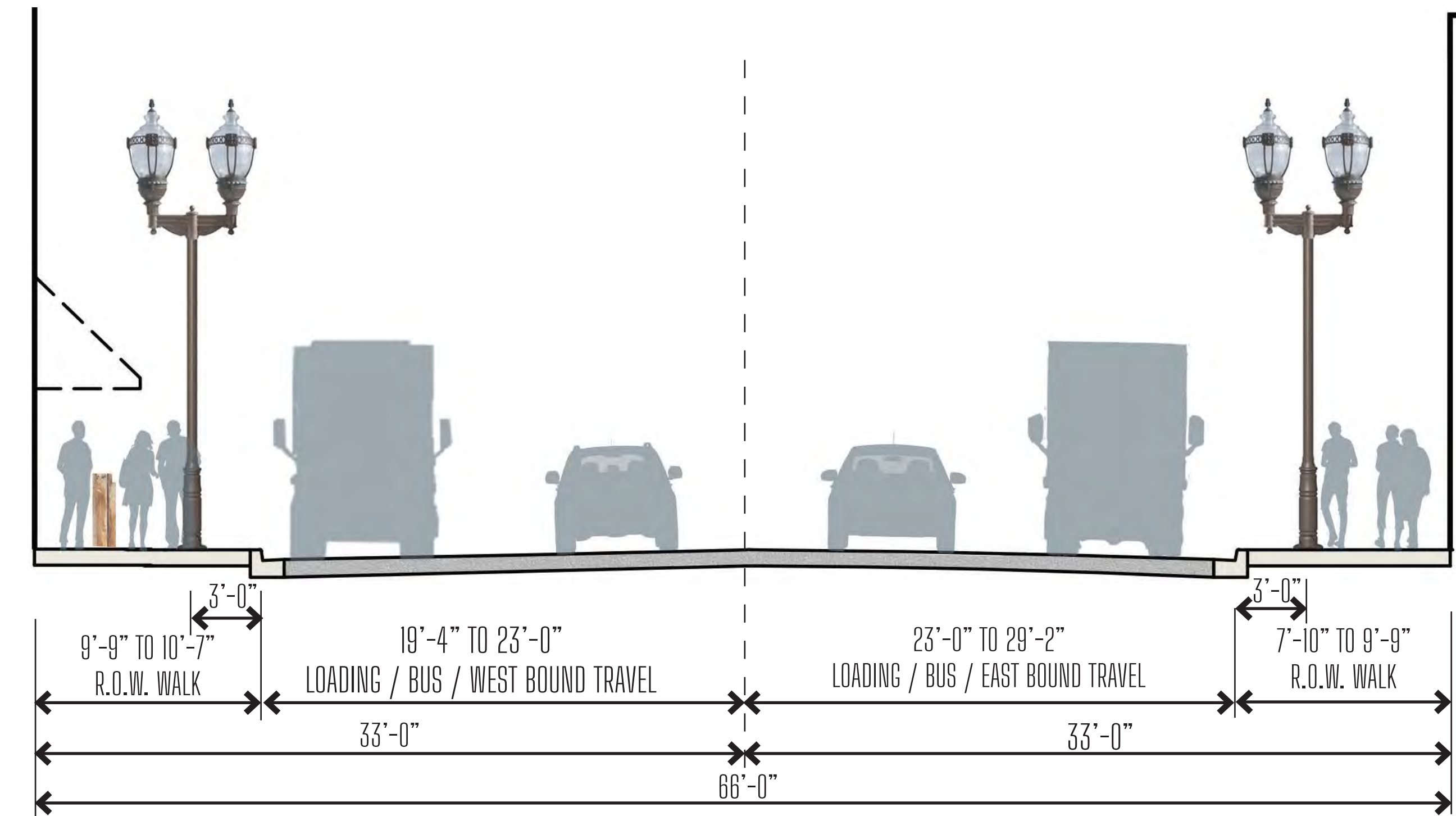


# PROJECT GOALS



## DESIGN GOALS

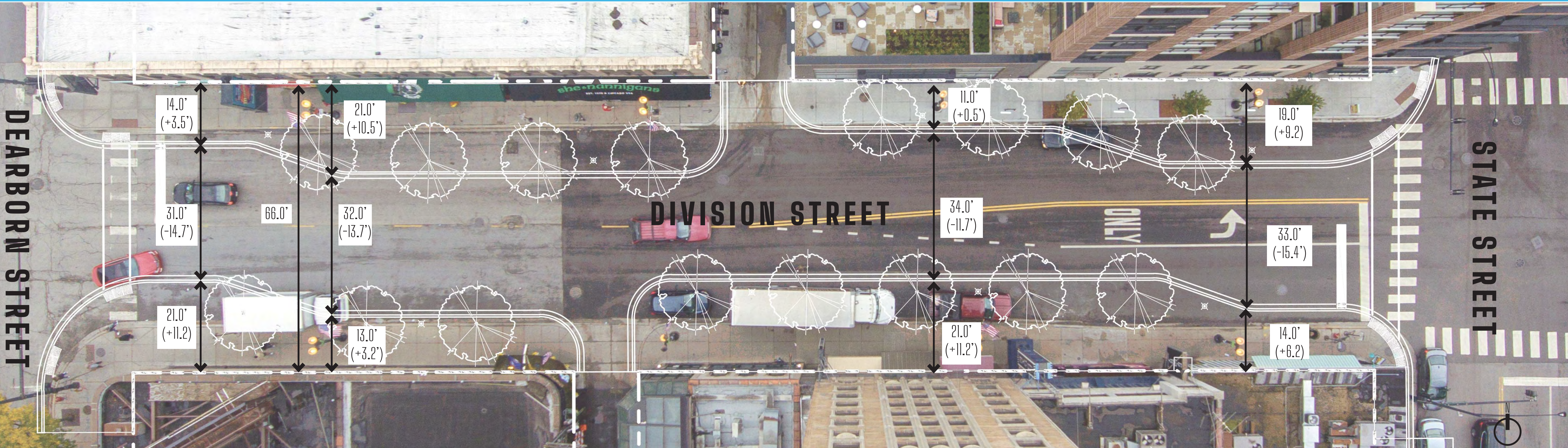
- **Create a unique and distinct neighborhood destination.** Re-energize the streetscape to attract new visitors.
- **Improve pedestrian and outdoor dining experience.** Streetscape design should balance traffic flow with wider sidewalks.
- **Cohesive streetscape character.** Reduce site clutter and simplify palette.
- **Improve pedestrian safety and vehicular circulation.** Shorten crossing distances and identify loading opportunities.



# DIVISION STREETScape IMPROVEMENTS



# STREET LAYOUT CHANGES

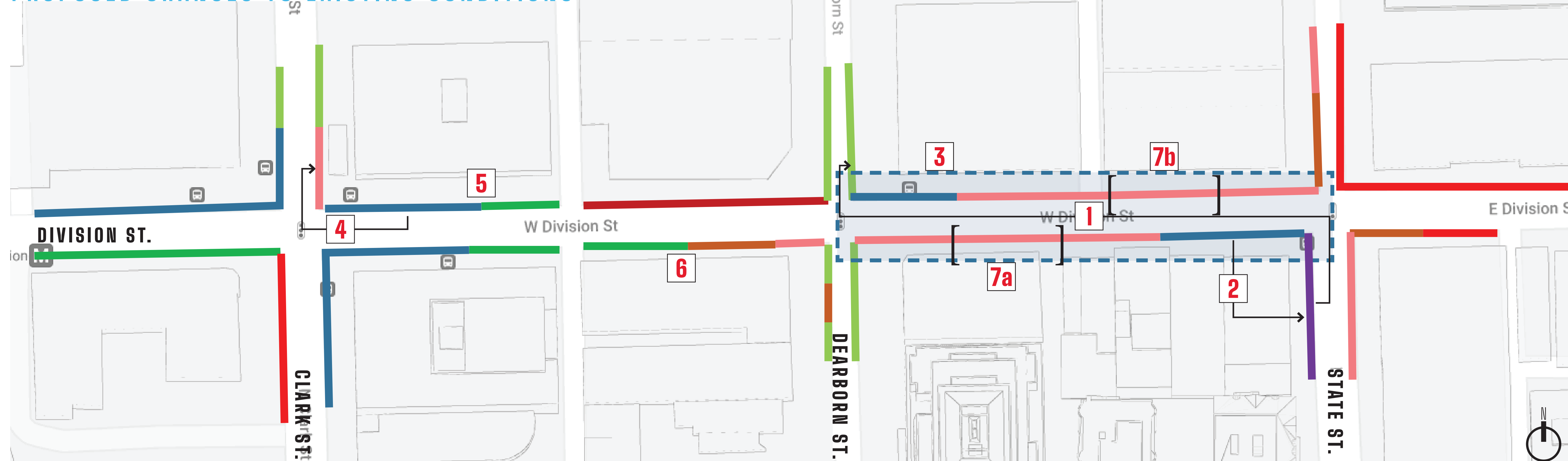


# DIVISION STREETScape IMPROVEMENTS



# CURB REGULATION CHANGES

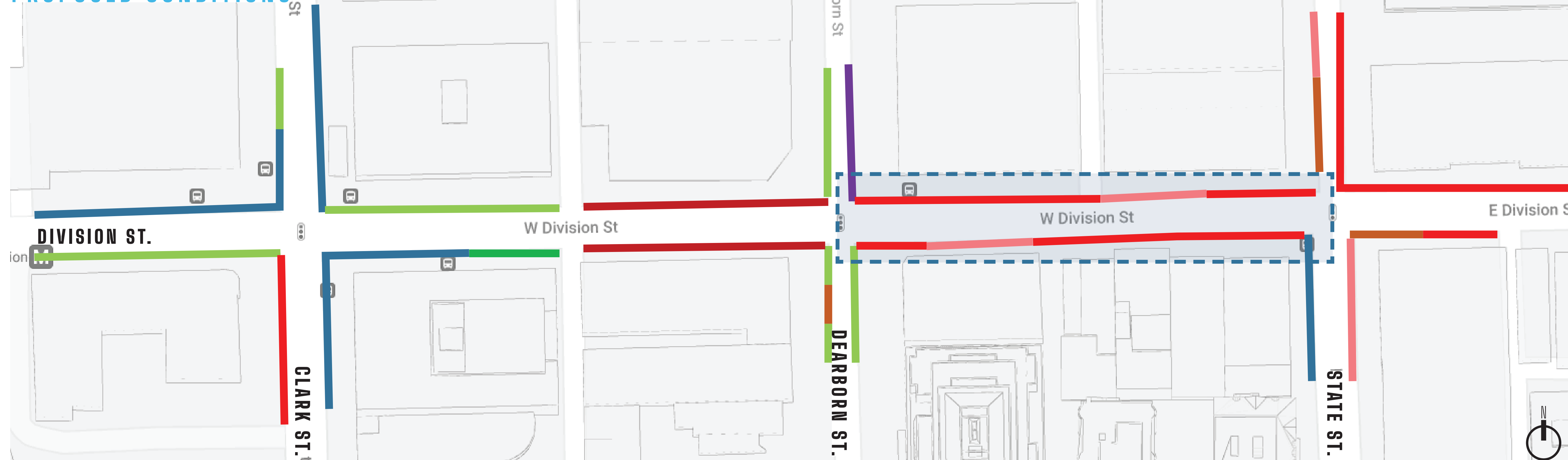
## PROPOSED CHANGES TO EXISTING CONDITIONS



## LEGEND

- 1 The **taxi stand** moves from State St. to Dearborn St.
- 2 The eastbound Division St. **bus stop** moves around to the corner to State St.
- 3 Remove the westbound Division St. **bus stop** at Dearborn St.
- 4 The westbound Division St. **bus stop** at Clark St. moves around the corner onto Clark St.
- 5 Replace the former **bus stop**, potentially with **metered parking**, and extend to the whole block.
- 6 Extend the **15-minute loading zone** to full block and extend the hours for rideshare.
- 7 Layby loading zones

## PROPOSED CONDITIONS



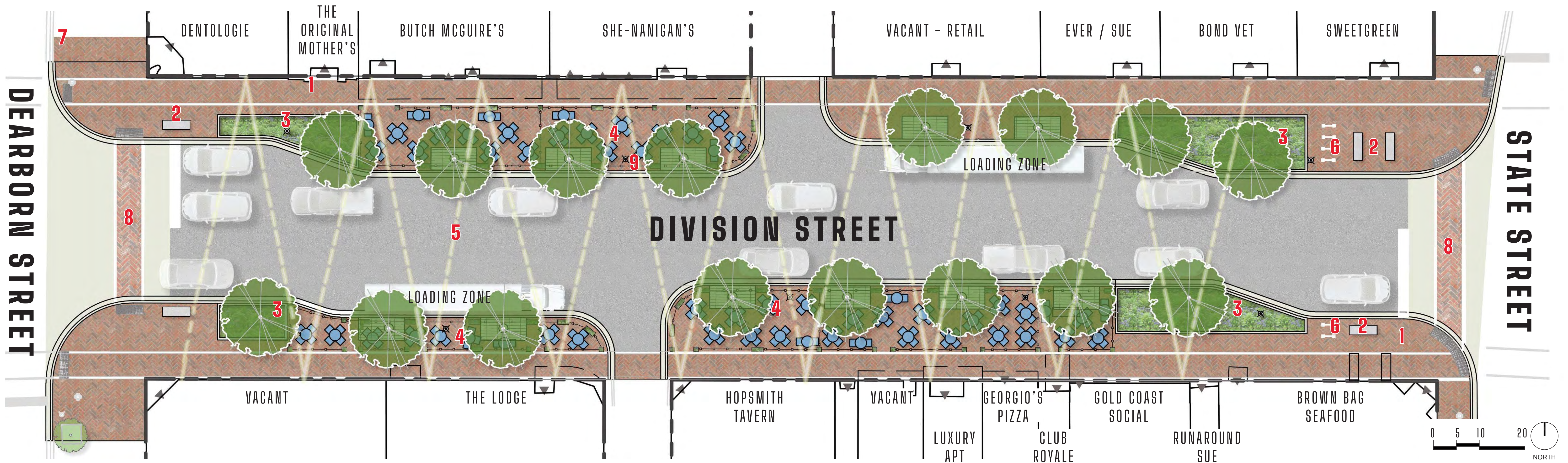
## LEGEND

- BUS STOP
- TAXI STAND
- PARKING
- METERED PARKING
- NO PARKING / TOW ZONE
- COMMERCIAL METERED ZONE
- 15 MIN. LOADING ZONE
- NO STANDING / NO STOPPING
- PROJECT AREA

# DIVISION STREETScape IMPROVEMENTS

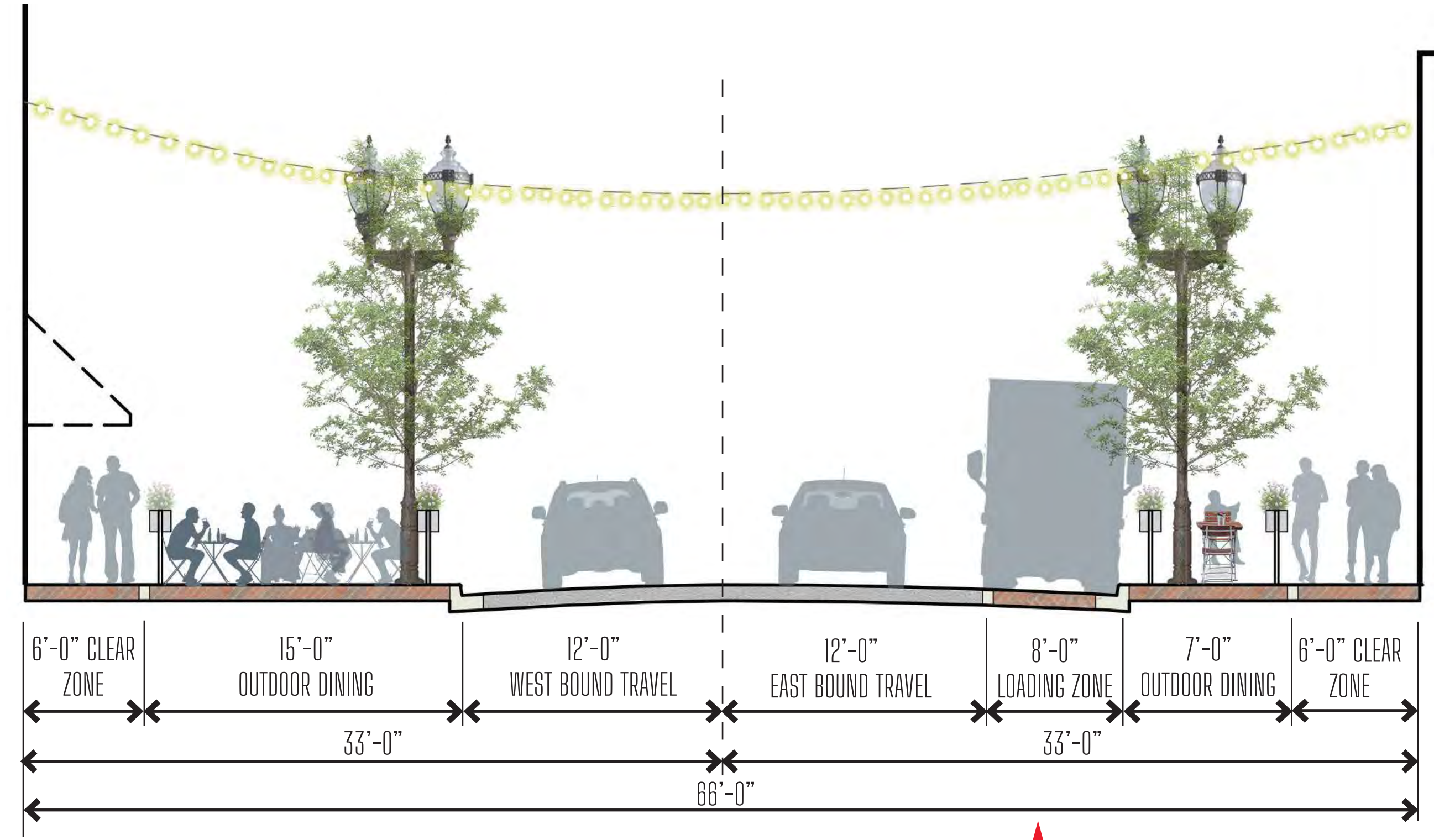


# CONCEPT PLAN - OPTION A



## DESIGN FEATURES

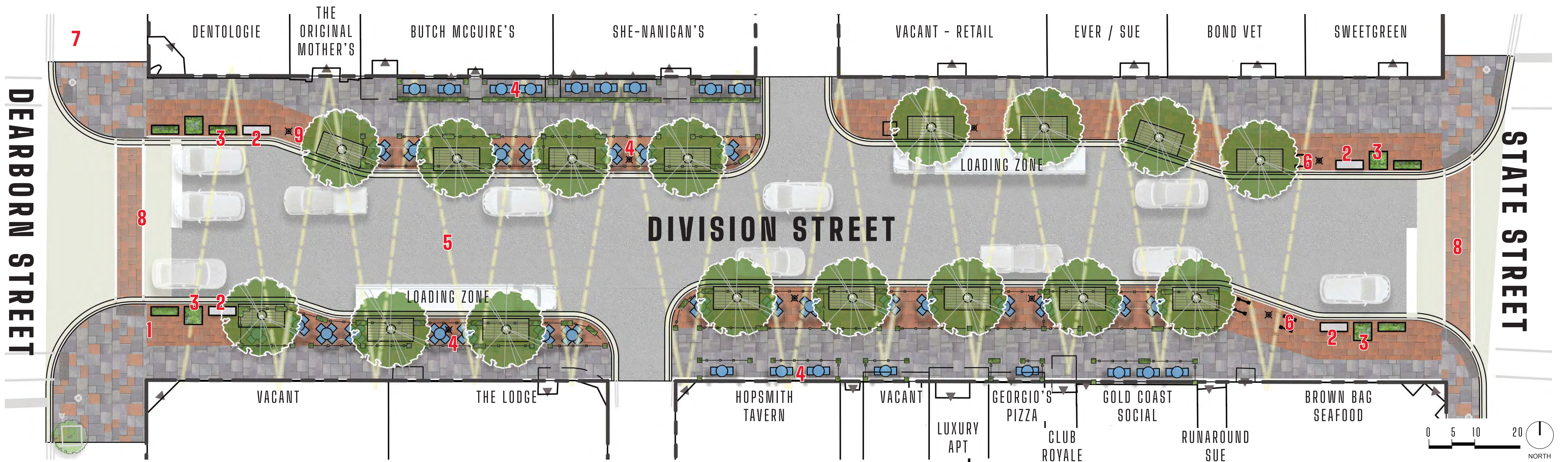
- 1** Red pavers in herringbone pattern for sidewalks and alley apron.
- 2** Metal benches with back and armrests
- 3** Curb planters bookend the street and visible from the intersections. Planters have trees, flowers, and shrubs and are maintained by Division St. Businesses
- 4** Outdoor dining zone along Division Street curb line and clear walking zone at the businesses
- 5** Festoon lighting strung from buildings, to be provided by others
- 6** Bike racks provided at intersections for business patrons.
- 7** Potential site for taxi stand relocation
- 8** Intersection crossing shortened for safer crossings. Crosswalk designated with unit pavers.
- 9** Existing "double-acorn" lighting replaced in-kind



# DIVISION STREETScape IMPROVEMENTS



# CONCEPT PLAN - OPTION B



PAVERS

1



2



SEATING

3



PLANTERS

4



OUTDOOR DINING\*

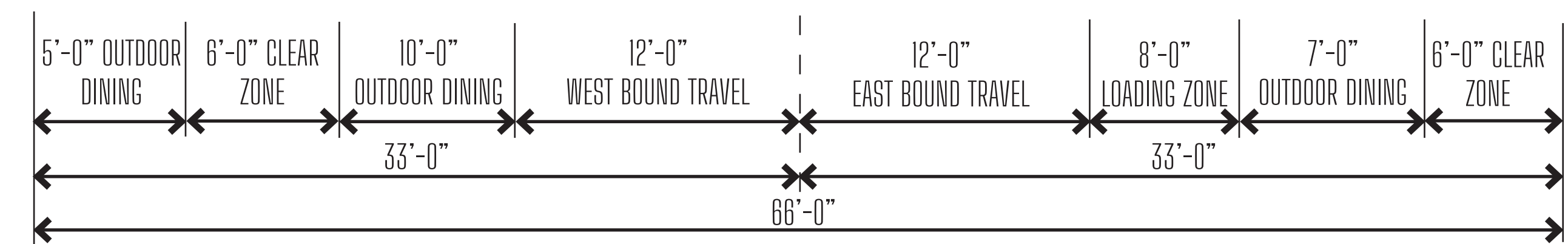
5

\* BY OTHERS



## DESIGN FEATURES

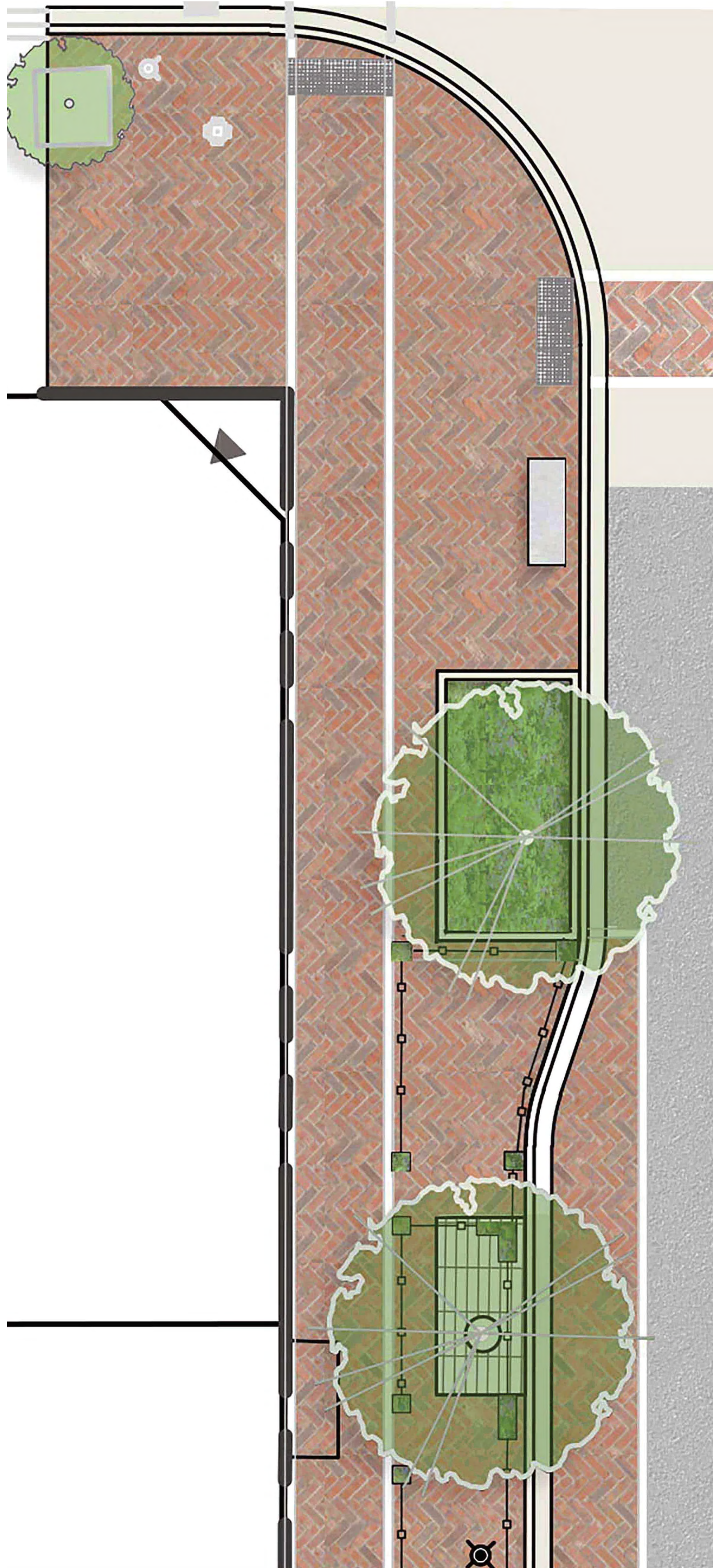
- 1** Two-tone pavers, natural gray at the sidewalk and red pavers along curb edge. Pavers used for the sidewalks.
- 2** Metal and wooden benches with back and armrests
- 3** Large concrete planters at intersections. Planters have trees, flowers, and shrubs and are maintained by Division St. Businesses
- 4** Outdoor dining zone along Division Street curb line and at the building. Clear walking zone in the middle of the sidewalk.
- 5** Festoon lighting strung from buildings, to be provided by others
- 6** Bike racks provided at intersections for business patrons.
- 7** Potential site for taxi stand relocation
- 8** Intersection crossing shortened for safer crossings. Crosswalk designated with unit pavers.
- 9** Existing 'double-acorn' lighting replaced in-kind



# DIVISION STREETScape IMPROVEMENTS



# PALETTE – OPTION A



PAVING



CURB PLANTER



SEATING



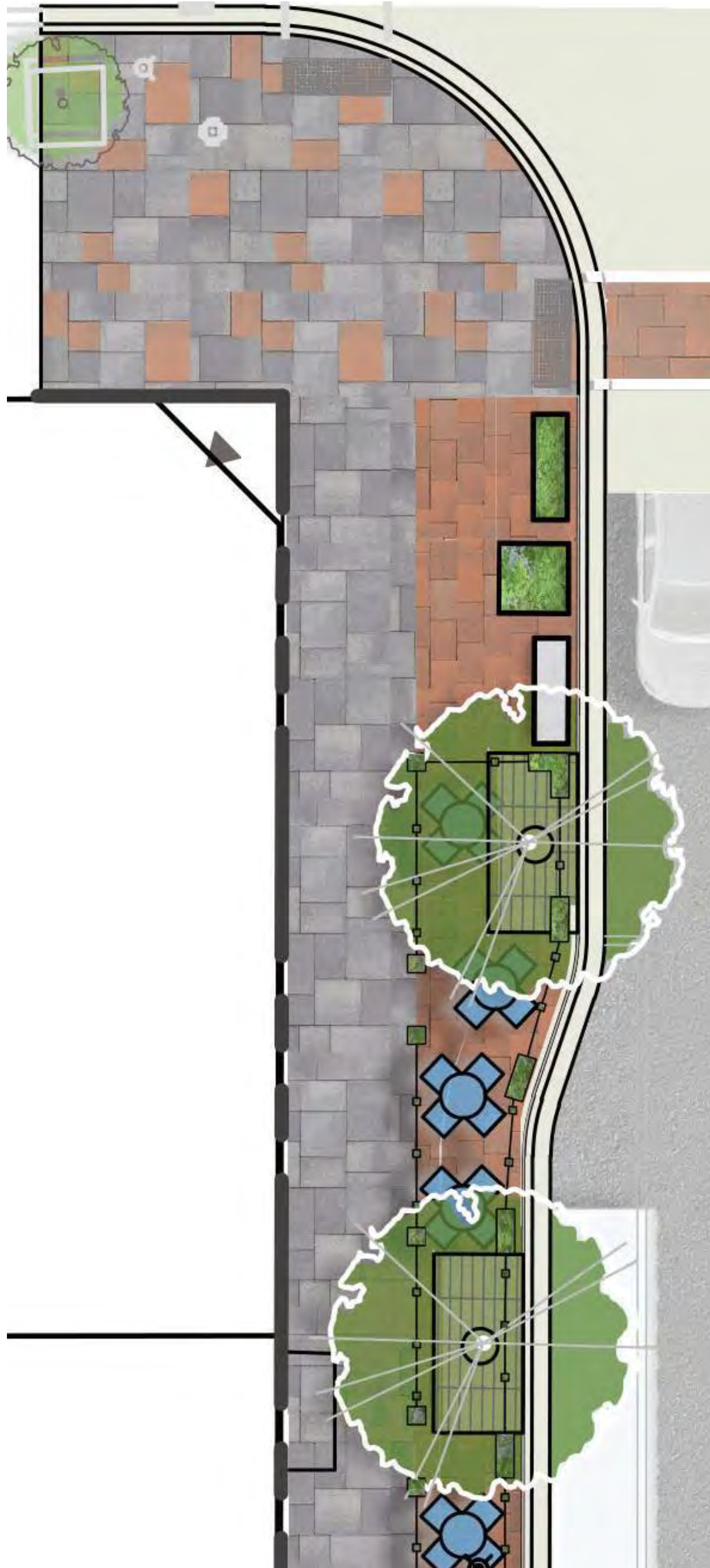
BIKE RACK



TRASH RECEPTACLE



# PALETTE – OPTION B



PAVING



CONCRETE PLANTER



SEATING



BIKE RACK



TRASH RECEPTACLE



# PALETTE PREFERENCES

Please place one sticky dot next to the style you most prefer within each streetscape element.

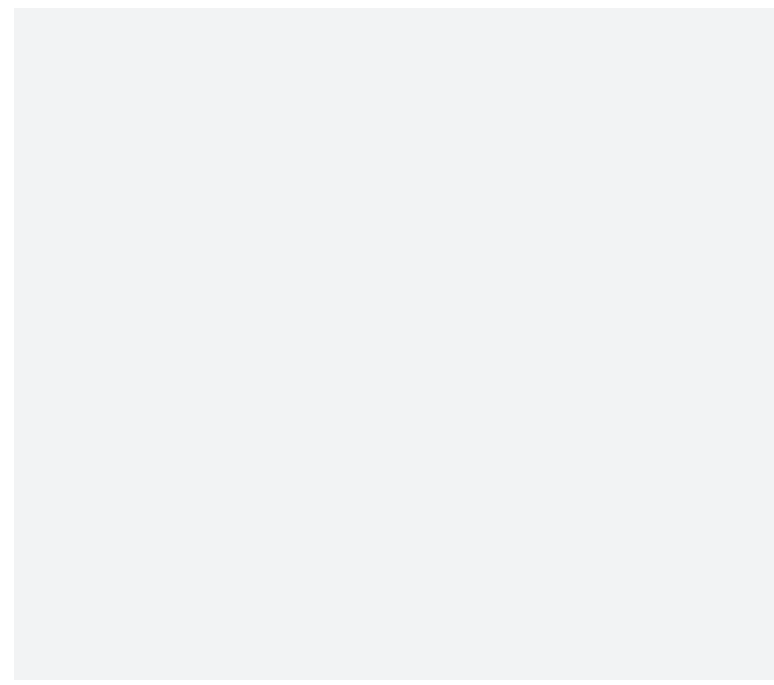
## OVERALL SCHEME | OPTION A



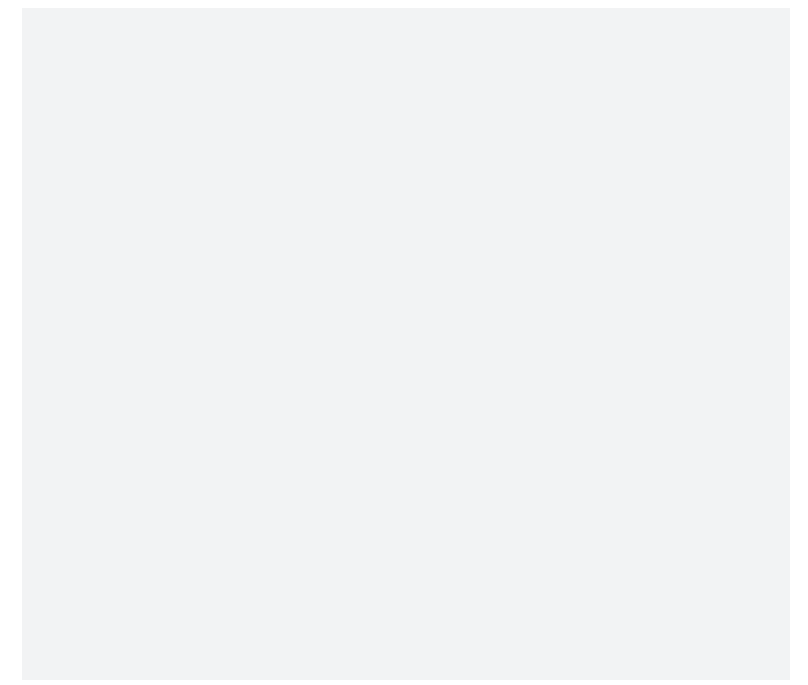
## OVERALL SCHEME | OPTION B



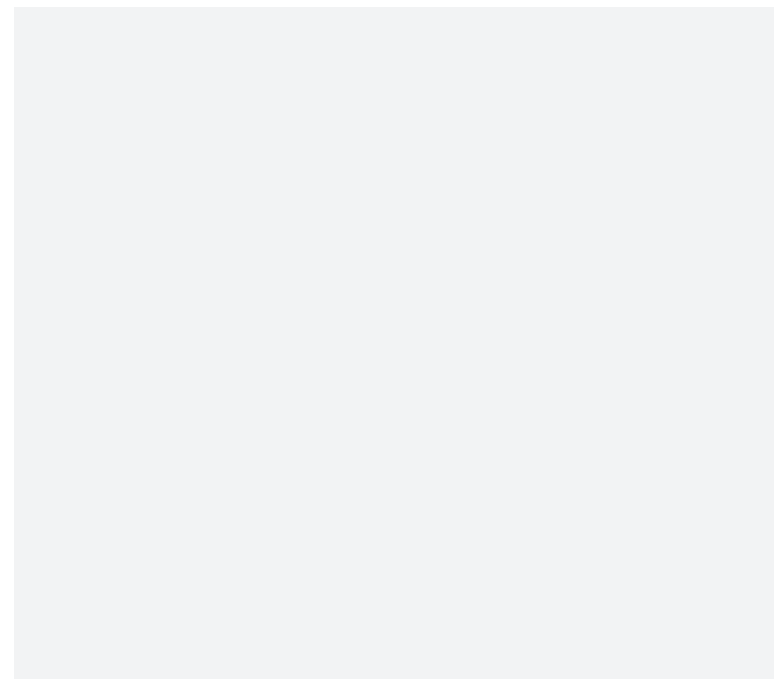
### PAVERS



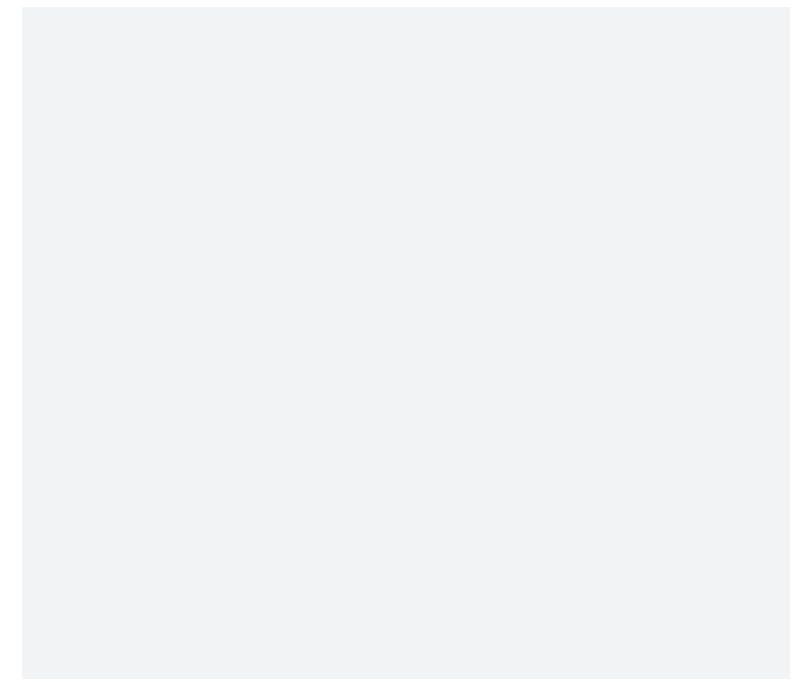
### PAVERS



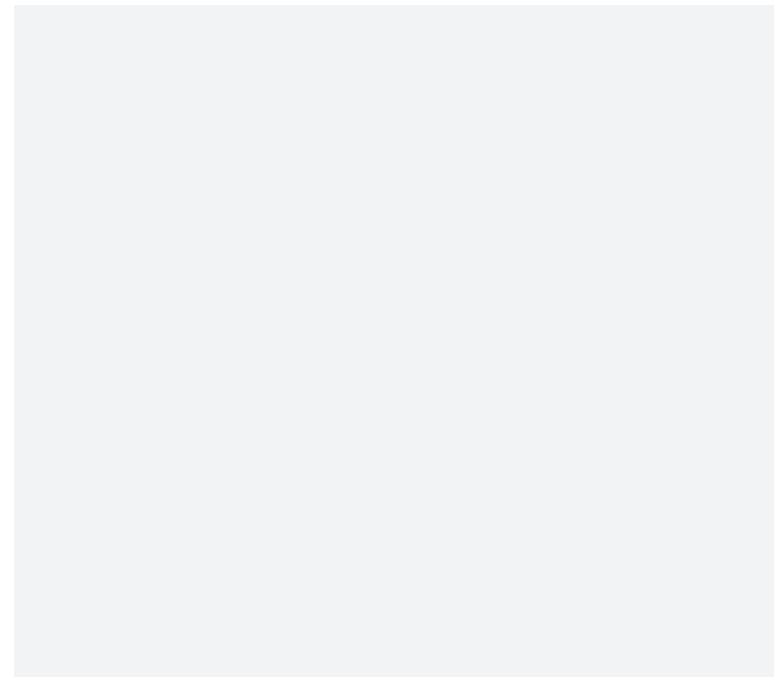
### PLANTERS



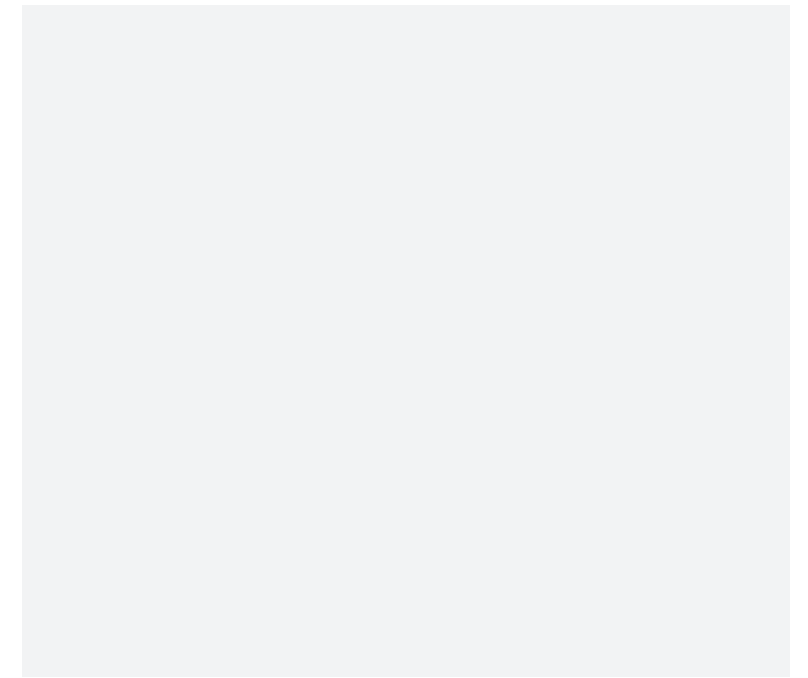
### PLANTERS



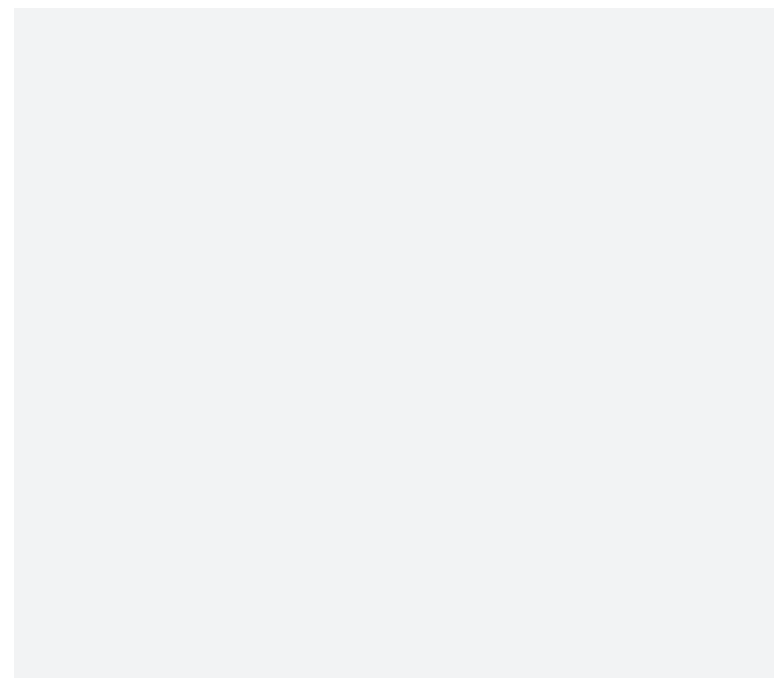
### SEATING



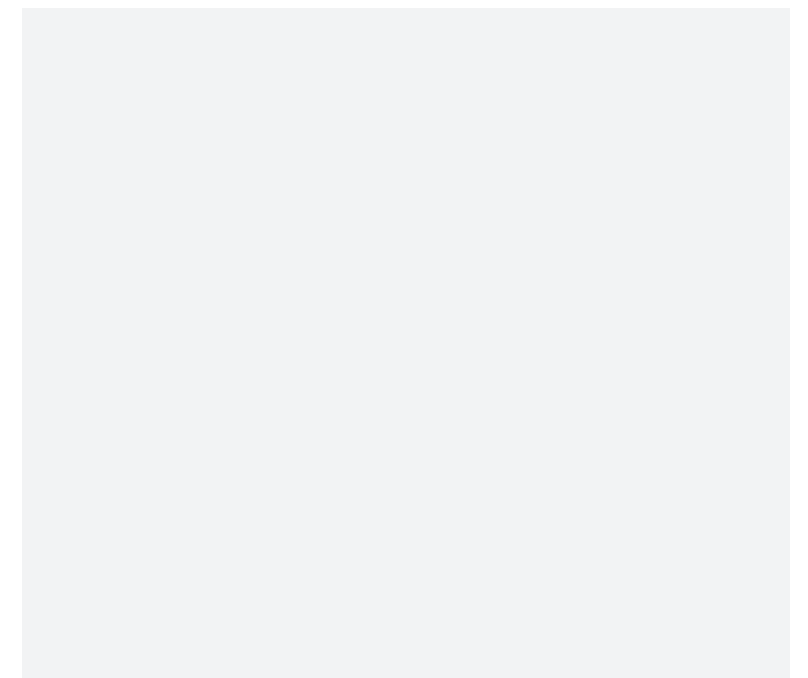
### SEATING



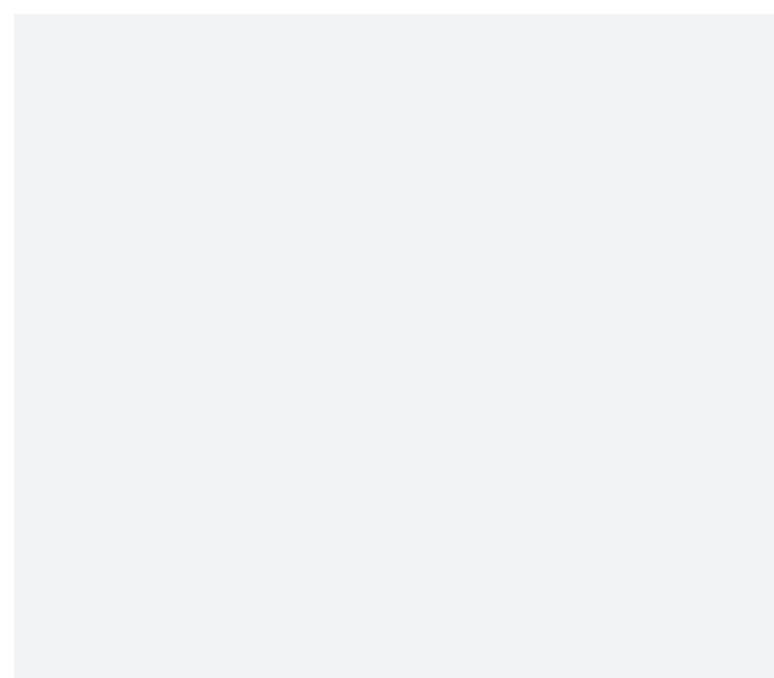
### TRASH RECEPTACLE



### TRASH RECEPTACLE



### BIKE RACK



### BIKE RACK

