


Humboldt Park North Avenue Corridor Improvements

KOSTNER AVENUE TO KEDZIE AVENUE

Public Meeting #1

March 21, 2024

Chicago Department of Transportation

Lubka Benak, Project Director, CDOT 
 Vanessa Irizarry, AICP, Project Manager, CDOT
 Bill Eldringhoff, PE, Project Engineer, CDOT

Jacobs (Lead)

Civil Engineering and Project Management

- Katelyn Hacker, PE
- Craig Jakobsen, PE, PTOE

Puerto Rican Cultural Center

Community Engagement



Elected Officials CHI

Alderspersion Jessie Fuentes, 26th Ward
 Alderspersion Gilbert Villegas, 36th Ward
 Alderspersion Emma Mitts, 37th Ward

Morreale Communications (WBE)

Community Engagement 
 • Abraham Jurado

M2 (WBE)

Urban Design 

- Mark Vrba

Sanchez & Associates (MBE)

Topographic Survey

Singh & Associates (MBE)

Electrical & Traffic Signal Engineering

GEO Services

Geotechnical Engineering

- 01 Project Overview
- 02 Past & Current Planning Efforts
- 03 Observations & Opportunities

15 min. break

- 04 Open House Feedback Session (survey)
- 05 Group Closing/Next Steps

PROJECT OVERVIEW

Re-activate neighborhood cores that have historically served as focal points for pedestrian activity, shopping, services, transportation, public spaces and quality-of-life amenities for residents.

Streetscapes consist of infrastructure, pedestrian safety, and placemaking improvements with the goal of creating unified, safe, walkable, and attractive streets. The streetscape projects are comprehensive and include public right-of-way improvements from building face to building face.

The Project Includes:

- Public outreach
- Placemaking and urban design strategy
- Concept design & engineering
- Detailed design & engineering
- Construction of the corridor

Project Limits:

Kostner Avenue to Kedzie Avenue



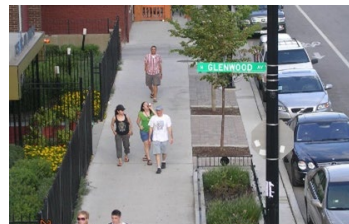
IDOT JURISDICTION



Street Geometry



Drainage Improvements



Sidewalk Improvements



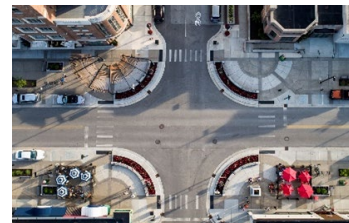
Light Pole Identifiers



Road Resurfacing



Lighting



Intersection Improvements



Gateway Identifiers



Landscaping/Sustainability



Seating Areas

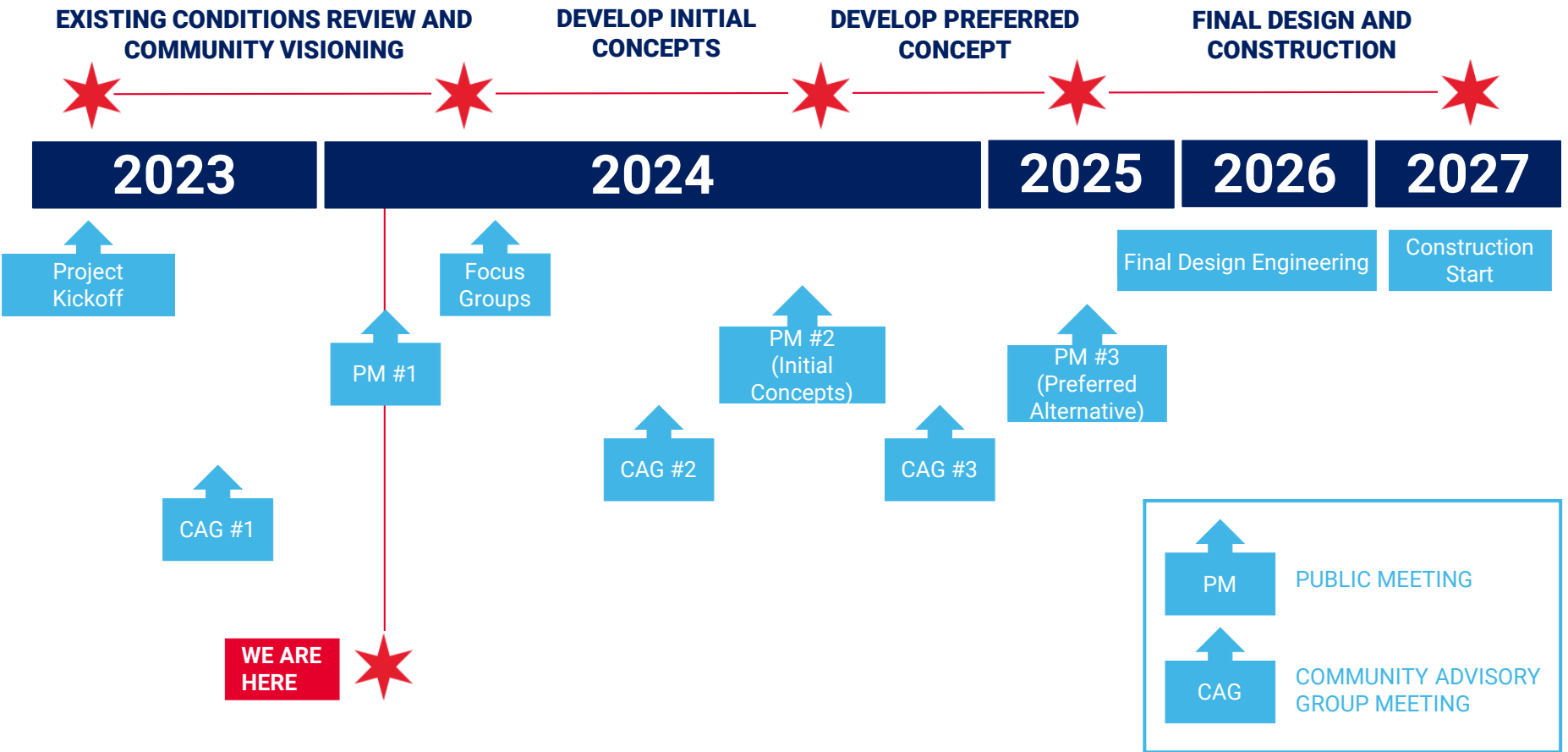


Curb Extensions / ADA Upgrades



Pavement Markings

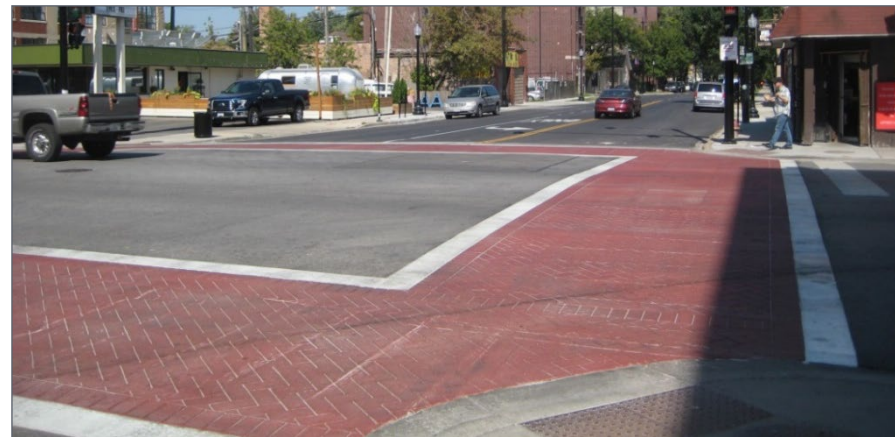
PROJECT OVERVIEW













BUFFERED BIKE LANE



PROTECTED BIKE LANE



PROTECTED BIKE LANE



RAISED BIKE LANE



SHARED BIKE LANE



INTERSECTION MARKINGS



INTERNATIONAL
CROSSWALK



PEDESTRIAN
SIGNAGE



CURB RAMP



PEDESTRIAN REFUGE
ISLAND



PEDESTRIAN
COUNTDOWN TIMER



CURB EXTENSION



SCHOOL CROSSING
SIGNAGE

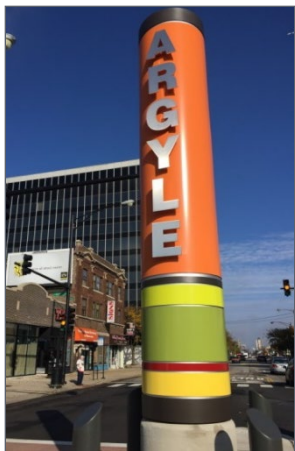


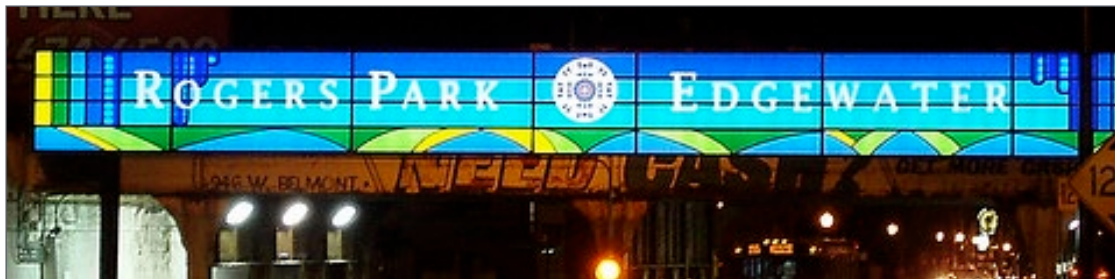
PROTECTED BIKE
LANE

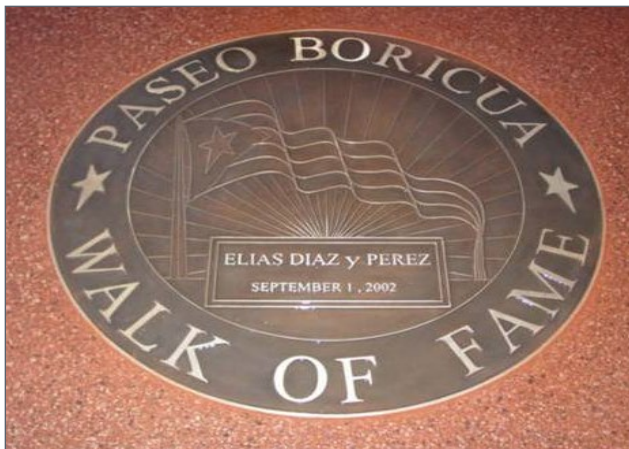


DECORATIVE
INTERSECTION
PAVEMENT









ROADWAY LIGHTING



CHICAGO GATEWAY POLE



DAVIT POLE

PEDESTRIAN/SIDEWALK LIGHTING



DOUBLE ACORN



SINGLE ACORN

Humboldt Park Quality of Life Plan (2005)



Revitalization Strategies for the North Avenue Corridor (2018) & Chicago-Oak Park Traffic Safety & Mobility Study on North Avenue (2021)



HUMBOLDT PARK QUALITY OF LIFE PLAN (2005)

- Security concerns on the corridor
- Improved commercial activity
- Strategies for improvement included
 - Open Space Coalition
 - Streetscape and gateway development to improve physical, economic and social infrastructure through marketing, communications, beautification and safety
 - Community art and murals (noted to preserve North & Artesian mural)

4.11 Open Space Coalition. Create an Open Space Coalition to help implement the “Open Space Plan for Humboldt Park.” Enhance existing parks and create new parks and green space.

6.5 Gateway Development

We will implement streetscape and community gateway projects along major streets including Division Street, North Avenue, Chicago Avenue and Western Avenue to provide a sense of a front door that welcomes visitors and residents to the community. The ultimate designs will be developed with community input, but some examples are included in **Figure 10**.

6.6 Community Art and Murals

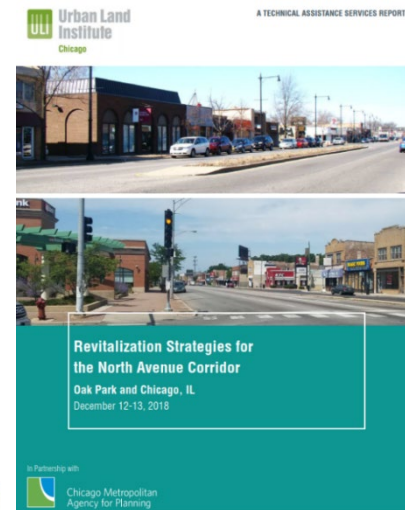
In order to beautify and provide deeper cultural identity to Humboldt Park, we will develop community art and mural projects at prominent intersections and continue working to preserve the mural at North and Artesian. Local youth recently painted a new mural on Lawndale Ave. at Chicago Ave.



Figure 10

REVITALIZATION STRATEGIES FOR THE NORTH AVENUE CORRIDOR (2018):

- Plan is for the section of North Ave. to the west of our project limits in the Austin neighborhood and Oak Park neighborhood
- Goals for corridor:
 - 'Right-Size' Intersections
 - Create Attractive Coordinated Streetscape



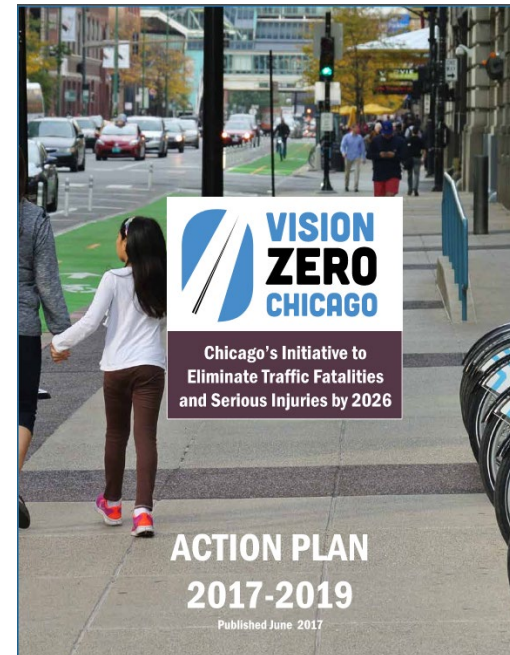
TRAFFIC SAFETY & MOBILITY STUDY (2021):

- (4) four goals and objectives were established to guide the plan
- Developed a corridor improvement plan with common streetscape elements and intersection specific treatments
- Proposed curb extensions, landscaped medians and transit stop relocations



Vision Zero Action Plan

- Humboldt Park has been identified as a high crash area in the Vision Zero Action Plan
- The Action Plan includes these recommendations:
 - Goal 1 – Invest Equitably
 - Goal 2 – A Culture of Safety
 - Goal 3 – Make Streets Safer for All Users
 - Goal 4 – Safer Drivers and Vehicles



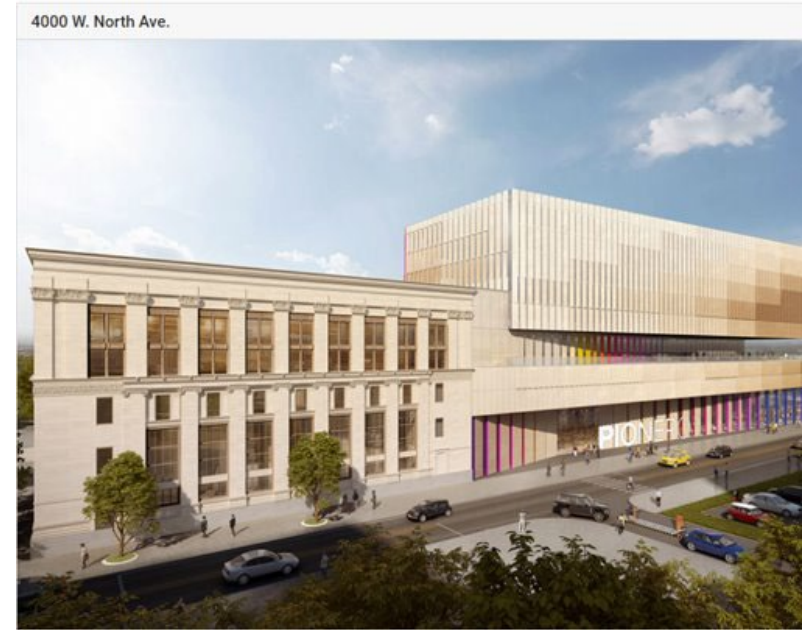
Strategic Plan for Transportation

- In 2021 CDOT developed a bold strategic plan to align the values of the city with the policies developed for implementing and maintaining the city infrastructure
- CDOT's plan includes goals that can be applied on North Ave:
 - Making it safer and easier to walk in Chicago
 - Bring CDOT's infrastructure into a state of good repair
 - Make Chicago's streets more responsive to community needs



Humboldt Park – Team Pioneros

- Team Pioneros project is a \$53.9 million proposal planned for the northwest corner of North Ave. and Pulaski Rd.
- The project will rehabilitate Pioneer Bank
- Vision to be Latino cultural and community hub
- 100 percent affordable, 75-unit residential building
- Offices for Humboldt Park Family Health
- Potential library branch.
- Team Pioneros is led by Park Row Development with All Construction Group and JGMA.

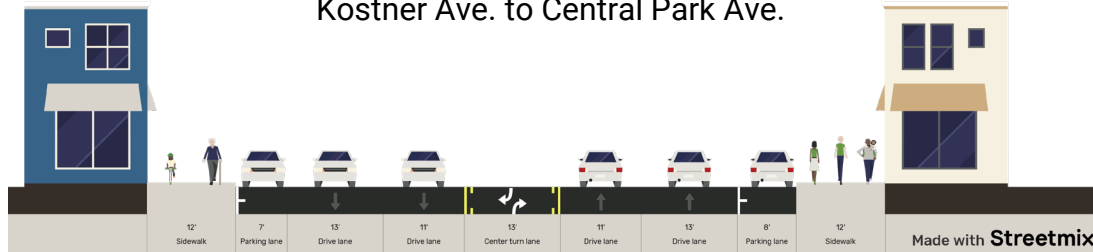


Arterial Resurfacing

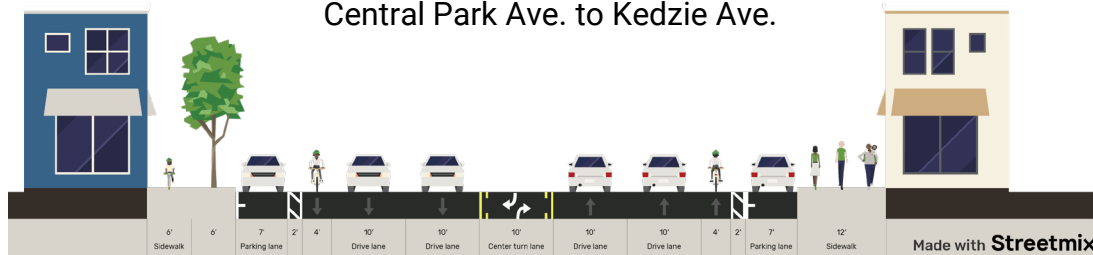
- AR from Cicero Ave. to Damen Ave.
- Arterial resurfacing projects on the corridor has addressed some safety issues with
 - Enhanced pedestrian crossings
 - Curb extensions
 - Pedestrian refuge islands



Kostner Ave. to Central Park Ave.



Central Park Ave. to Kedzie Ave.

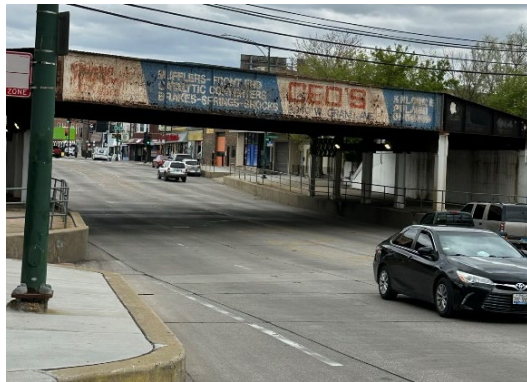


Roadway Configuration:

- Two lanes in each direction with parking
 - Painted center median with concrete refuge islands and left turn lanes
 - Pedestrian crossings with bump outs and refuge islands
 - Buffered bike lanes from Central Park Ave. to Kedzie Ave.

Roadway Configuration:

- Under the Metra viaduct there are two lanes in both direction between Ridgeway Ave. and Lawndale Ave.
- Roadway generally in good condition due to Arterial Resurfacing Program improvements (in 2018 and 2021)

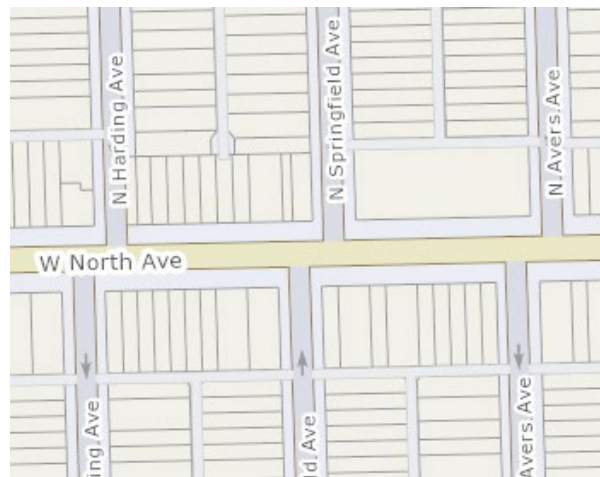


Intersections:

- Offset intersection configurations occur frequently along the corridor

Transit Amenities:

- Bus Route 72 with several JCDecaux shelters
- 3 transfer bus routes
 - Kimball Ave. (Route 82)
 - Pulaski Ave. (Route 53)
 - Grand Ave. (Route 65)

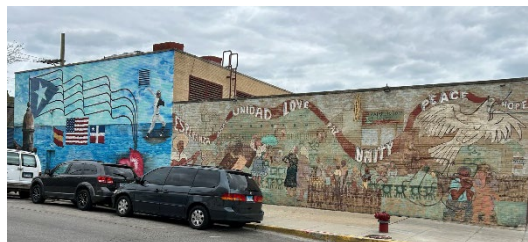
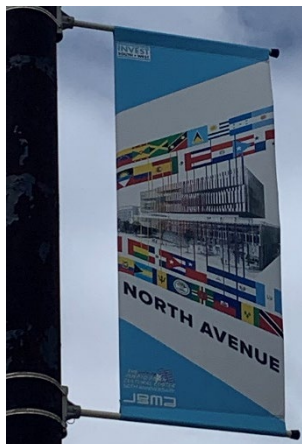




Pedestrian Experience:

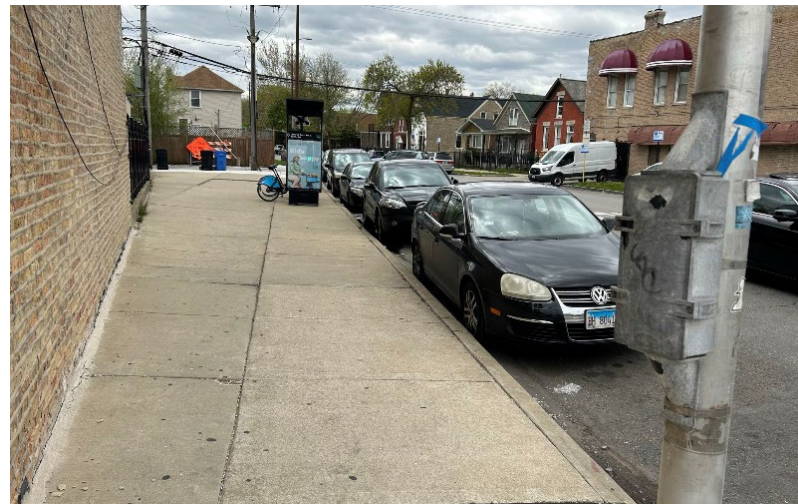
- High curbs in some locations lead to accessibility issues that Arterial Resurfacing was not able to fully address
- Limited pedestrian space, especially at bus stops (CTA Route 72)
- Sidewalk widths leave little space for sidewalk amenities or gathering space





Corridor Identity:

- Neighborhood has a mixture of several Latin American cultures
- Variety of business types along corridor
- Side street building murals celebrate the community



Community Assets:

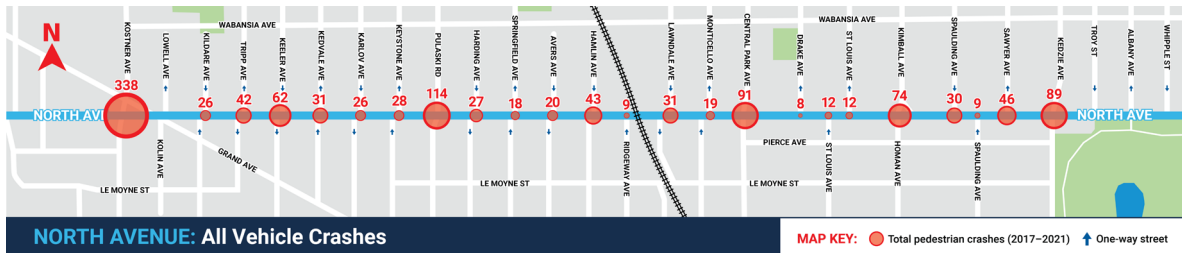
- Parkway on adjacent side streets vary in condition and are generally underutilized and lacking landscaping
- Pulaski plaza is a large existing gathering space

- Provide community areas for art
- Provide areas for performance to showcase local talent
- Pulaski Rd. and North Ave. intersection is a potential location for a dedicated gathering space
- Side street bump outs could potentially be constructed for small gathering spaces
- Feature the multi-national Latin American cultures present within the community
- Cultural cuisines are an important aspect of this multi-national community



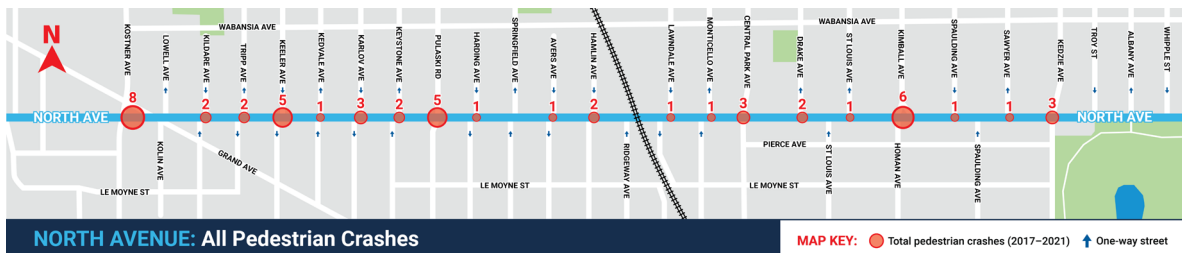
- Access concerns (including ADA) with broken sidewalks and stairs at viaduct
- Locations of concern for pedestrian safety:
 - Kostner Ave./North Ave./Grand Ave.
 - Staggered intersections adjacent to viaducts
 - Westbound North Ave. to northbound Kimball Ave. dedicated right-turn lane





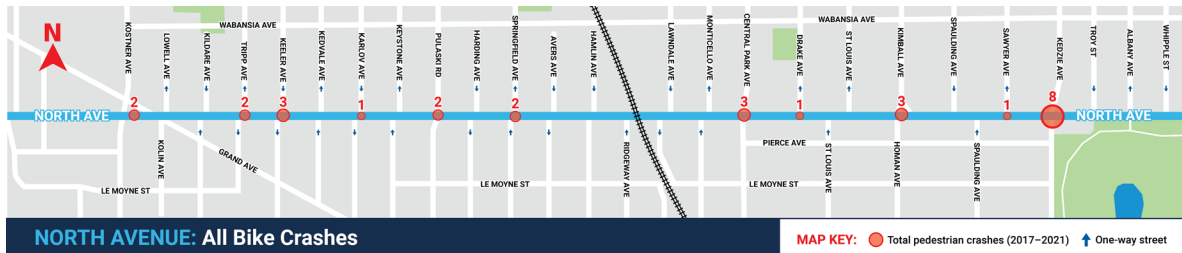
Highest Crash Intersection (Per Vehicles)

- North Ave./Kostner Ave./Lowell Ave.



Highest Pedestrian Crash Intersections

- North Ave./Kostner Ave./Grand Ave
- North Ave./Kimball Ave.
- North Ave./Pulaski Ave.
- North Ave./Keeler Ave.



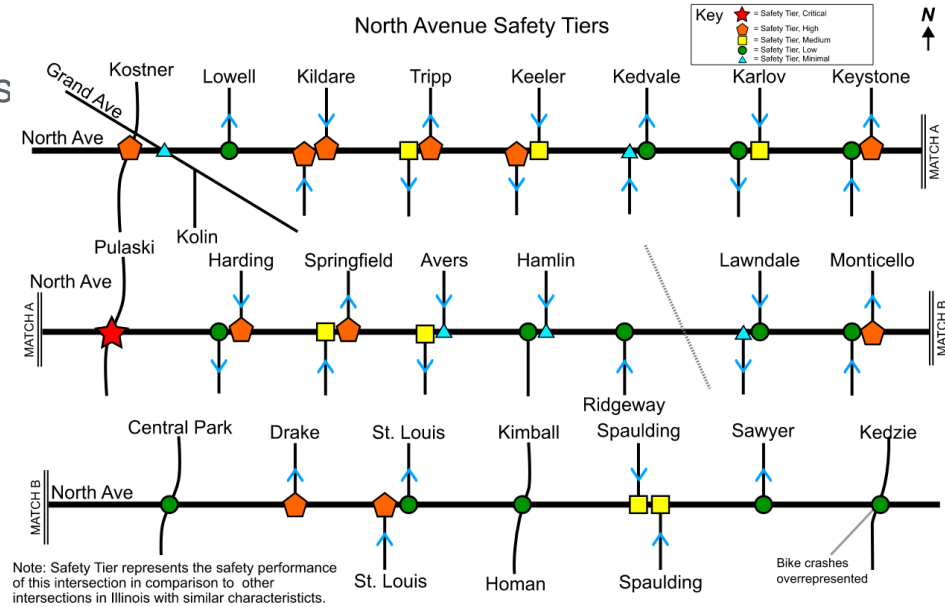
Highest Bike Crash Intersection

- North Ave./Kedzie Ave.

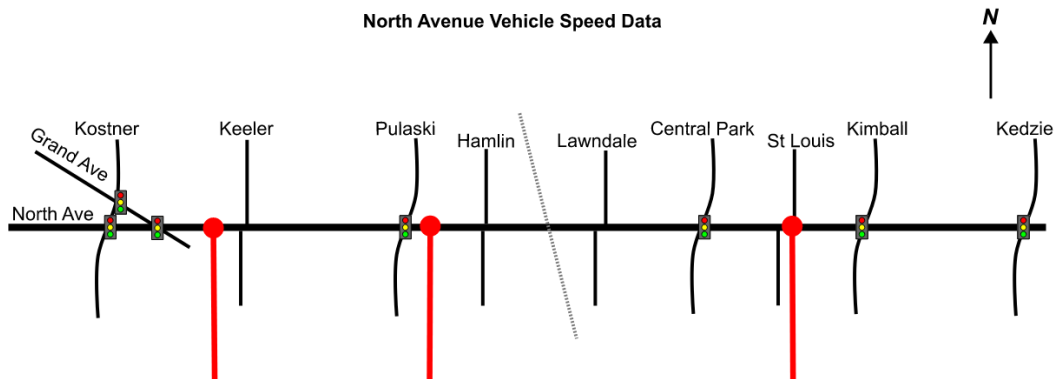
- Safety tiers are created based on crash data in comparison to similar intersections across the state
- Tiers illustrate which intersections present more opportunities for safety improvements

Intersections of note:

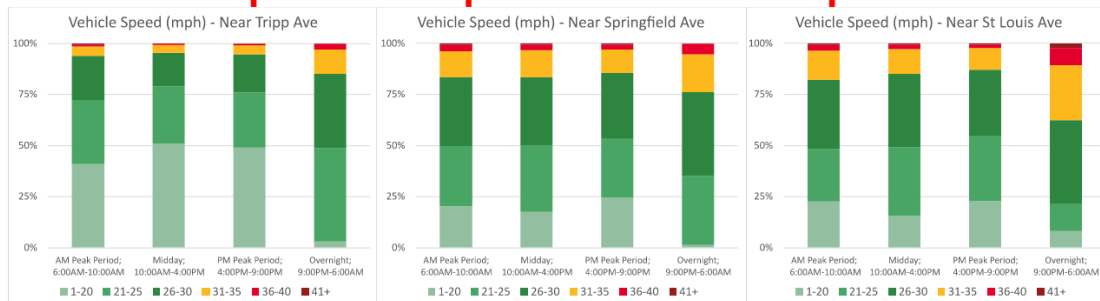
- Pulaski Ave. – intersection for safety improvements
- High crash intersections with lower amount of potential safety improvements:
 - Kedzie Ave.
 - Kimball Ave.
 - Central Park Ave

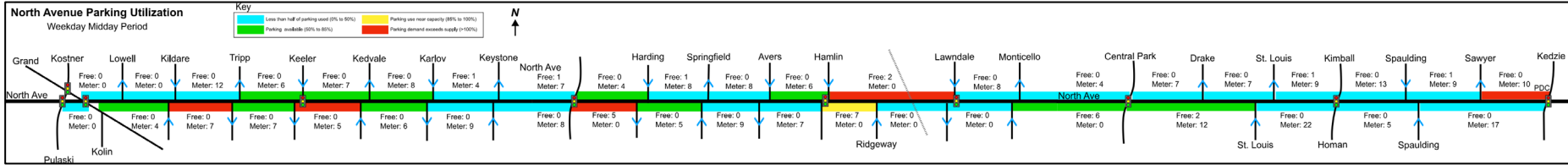


North Avenue Vehicle Speed Data

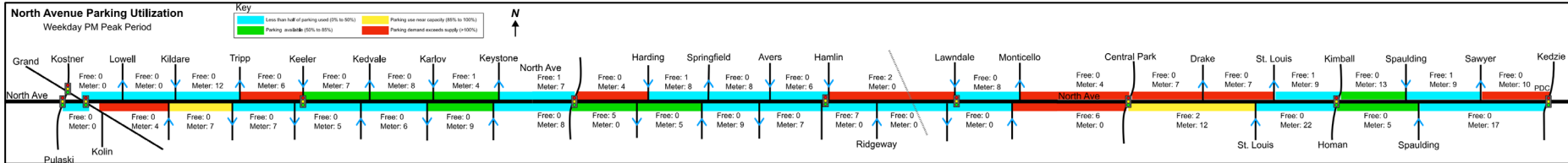


- Corridor has a posted speed of 30mph
- Green percentages are within speed limit
- Speed taken at 3 locations along the corridor (shown with red dots)
- Overall speed data has shown that speeding is not an issue along the corridor
- Speeding occurs most frequently overnight when traffic volumes are low





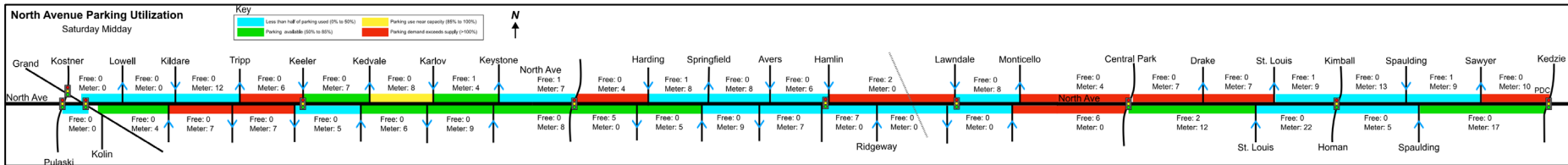
Weekday – Midday Parking Observations



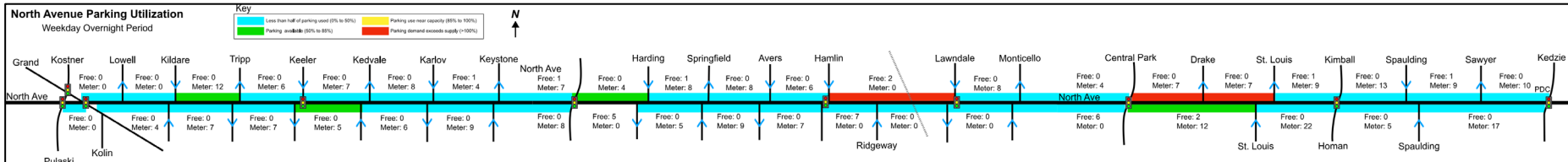
Weekday – PM Peak Parking Observations

Legend

Light Blue	Less than half of parking used (0% to 50%)	Yellow	Parking use near capacity (85% to 100%)
Green	Parking available (50% to 85%)	Red	Parking demand exceeds supply (>100%)

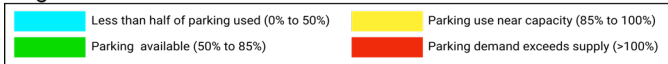


Saturday – Midday Parking Observations



Weekday – Overnight Parking Observations

Legend



We need your feedback!



Corridor Observations

Do you have an intersection you are concerned about? Are there areas the public avoids? Which crosswalks are uncomfortable?



Design Theme

What style do you think reflects the community? Are there elements you want to see in the streetscape design?



Community Input

We've had some preliminary feedback but we need more! Come drop your notes about ideas to improve the corridor. Do you have ideas for how the community can use the space?



Public Survey

Take the survey asking about your experience on the corridor. Let us know if we are missing something!



- 01** Online Survey – March thru end of April 2024
- 02** Ongoing IDOT Coordination
- 03** Theme & Initial Concept Development
- 04** Additional Community Engagement for Concepts
 - Stakeholder Meetings and Focus Groups
 - CAG Meeting #2 for Initial Concepts
 - Public Meeting #2 for Initial Concepts

THANK YOU!

We appreciate **YOU** taking the time to join us!



Any questions or comments can be submitted on the project website:

<https://chicagocompletestreets.org/portfolio/invest-south-west-humboldt-park-north-ave/>



Take our online public survey here:



English Version



Spanish Version