



ISW SOUTH SHORE

79th Street Stony Island Avenue to South Shore Drive Corridor Improvements Project

June 29, 2022 | Advisory Group Meeting



- 01** Introductions
- 02** Project Overview
- 03** Meeting Goals
- 04** Project Background
- 05** Streetscape Components
- 06** Placemaking
- 07** Next Steps + Q&A + Breakout Activities



Everyone working together!

- 01 Please **be attentive** during the presentation and when you are not speaking
- 02 Please **state your name** when speaking
- 03 Please **WAIT** for the designated Q&A period
- 04 When you want to speak, **RAISE YOUR HAND**; respect the order and then step up and step back
- 05 All questions and ideas are valid
- 06 Respect all other participant opinions and perspectives

Ward 7

- Alderman Greg Mitchell

Ward 8

- Alderman Michelle Harris

Chicago Department of Transportation (CDOT)

- Lubka Benak, *Program Director*
- Camille Applewhite, *Project Manager*

Singh

Prime Engineer W/MBE

- *Carl Gutowski, PE*

Site Design Group

Landscape Architecture MBE

- *Brenda Kiesgen*

Local Artist

- *Damon Reed*

GSG Consultants

Geotechnical Services MBE

Blue Daring

Public Involvement MBE

- *Veronica Cruz*

GRAEF

Topographic Survey

STREETSCAPE PROJECT OVERVIEW

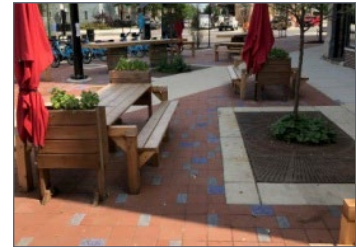
Supports the [Invest South/West initiative](#) to re-activate neighborhood cores that have historically served as focal points for pedestrian activity, shopping, services, transportation, public spaces and quality-of life amenities for residents.

Part of [Chicago Works](#): Mayor Lori E. Lightfoot’s five-year capital plan that will Invest in Communities Through Infrastructure.

The streetscapes consist of infrastructure, pedestrian safety, and placemaking improvements with the goal of creating a unified, safe, walkable, and attractive commercial destination. The streetscape projects are comprehensive and include ROW improvements from building face to building face.

The Project Process Includes:

- Public outreach
- Placemaking and urban design strategy
- Concept design & engineering
- Detailed design & engineering
- Construction of the corridor



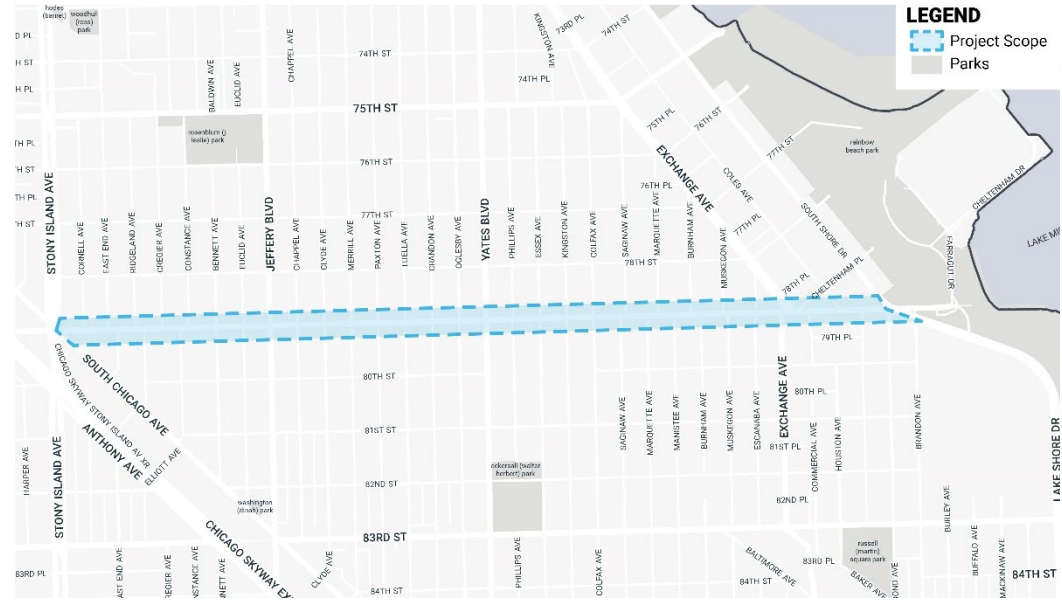
PROJECT SCOPE

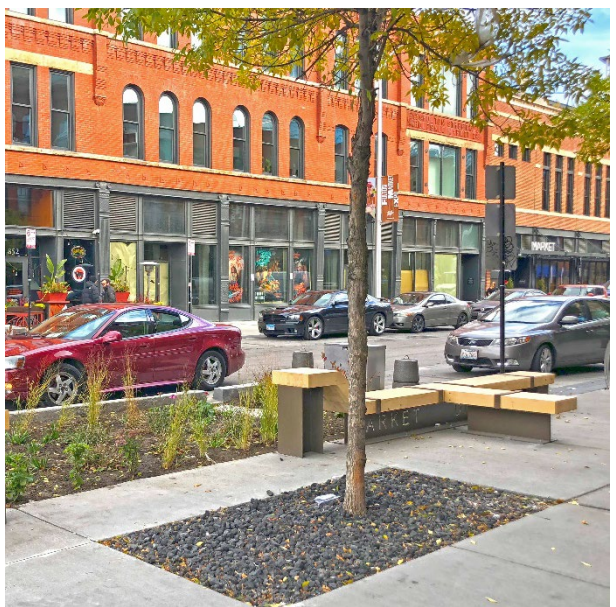
ISW South Shore

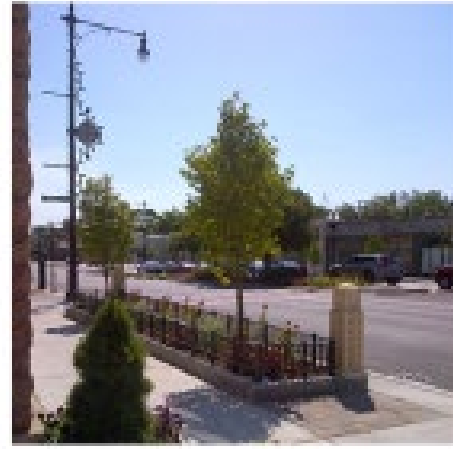
79th Street, Stony Island Avenue to South Shore Drive

Alderman Mitchell, Ward 7 / Alderwoman Harris, Ward 8

- New sidewalk, curb, and gutter
- ADA ramps and crosswalk upgrades
- Curb extensions and bus pads where necessary
- Drainage improvements and vault filling
- Roadway geometry and intersection improvements
- Full width resurfacing and pavement patching as needed
- Pavement markings
- New street lighting
- Traffic signal replacement as needed, LED traffic signal upgrades, traffic pole painting, ped count down timers where necessary
- Street trees and potential landscaping
- Site furniture and potential seating areas
- Paver parkways
- Side street improvements to the alleys
- Light pole mounted community identifiers and neighborhood gateways









PROJECT SCOPE

2021

2022

2023

2024

2025

Q3 Q4

Q1 Q2 Q3 Q4

Q1 Q2 Q3 Q4

Q1 Q2 Q3 Q4

Q1 Q2

DESIGN

CONSTRUCTION
SECTION 1
SECTION 2
SECTION 3

PUBLIC
OUTREACH

WE ARE
HERE

As part of the design and engineering services phase, CDOT is seeking input from community members on the design of this corridor.

Your vital input will help the project team meet the following objectives:

- Develop a **shared vision** that reflects the South Shore community.
- Foster an environment for **future economic growth and public amenities**.
- Support INVEST South/West initiative to **re-activate neighborhood cores**.
- Incorporate **stakeholder goals** within recommended concepts.

GAIN AWARENESS

of the 79th Street Corridor project purpose and scope

GATHER INPUT

on your priorities for corridor improvements and character

ASK FOR SUPPORT

in notifying the community about the project

MEETING #1

- Introduce the project and design process
- Obtain input on preliminary design concepts

PREFERENCES ON CORRIDOR CHARACTER AND THEMES

DISCUSS CROSS SECTION CONCEPTS

SHARE THOUGHTS ON PLACEMAKING OPPORTUNITIES

Project team will consider all feedback received and refine concepts accordingly.

MEETING #2

- Present updated concepts
- Obtain input on placemaking concepts

PREFERENCES ON PLACEMAKING CONCEPTS AND TREATMENTS

REVIEW UPDATED CROSS SECTIONS AND ROADWAY FEATURE CONCEPTS

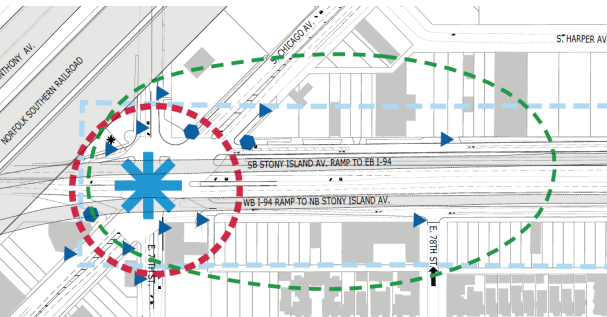
SUMMARIZE CONSTRUCTION DETAILS AND NEXT STEPS



CDOT has reviewed improvements proposed from previous neighborhood studies, to better align the project's goals.

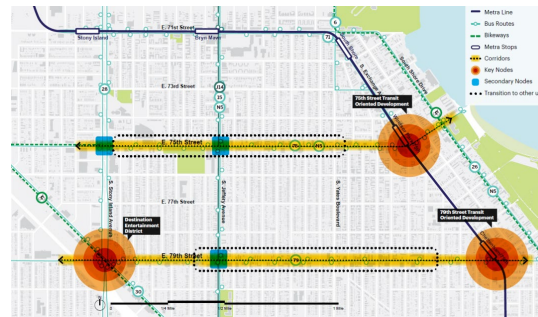
Stony Island Avenue Streetscape Master Plan (2010)

Addresses improvements that aid the safety of pedestrians and cyclists, active transportation users, along the corridor.



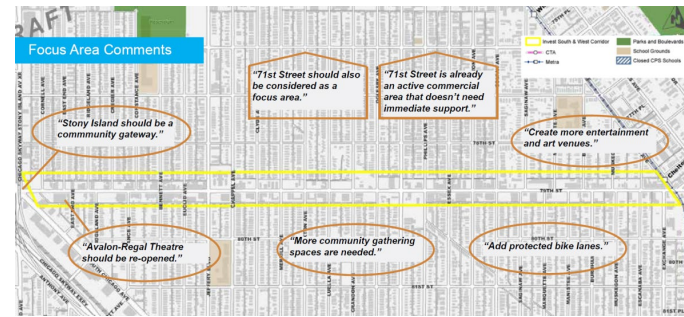
South Shore Corridor Study (2020)

Provides 10 "Ideas for Action" that aim to address community challenges and build on community strengths.



INVEST South/West: South Shore (2020)

79th, Stony Island Avenue to South Shore Drive was identified as a priority focus due to transportation options and opportunities for development.

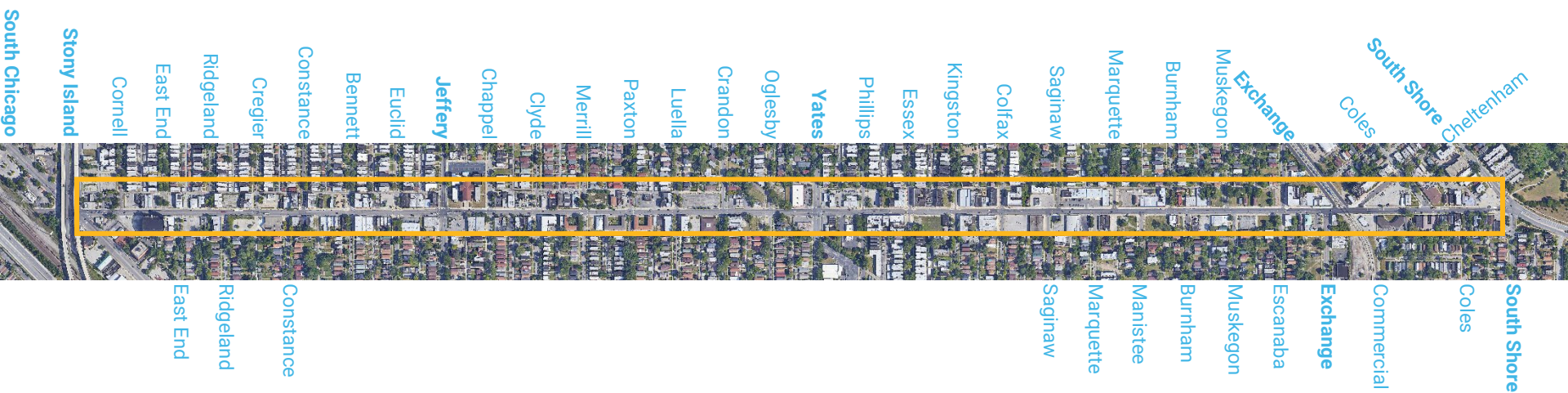




79th Street



Project Limit



UNDERSTANDING THE CORRIDOR



MULTI-MODAL SAFETY

enhance the corridor's walking environment

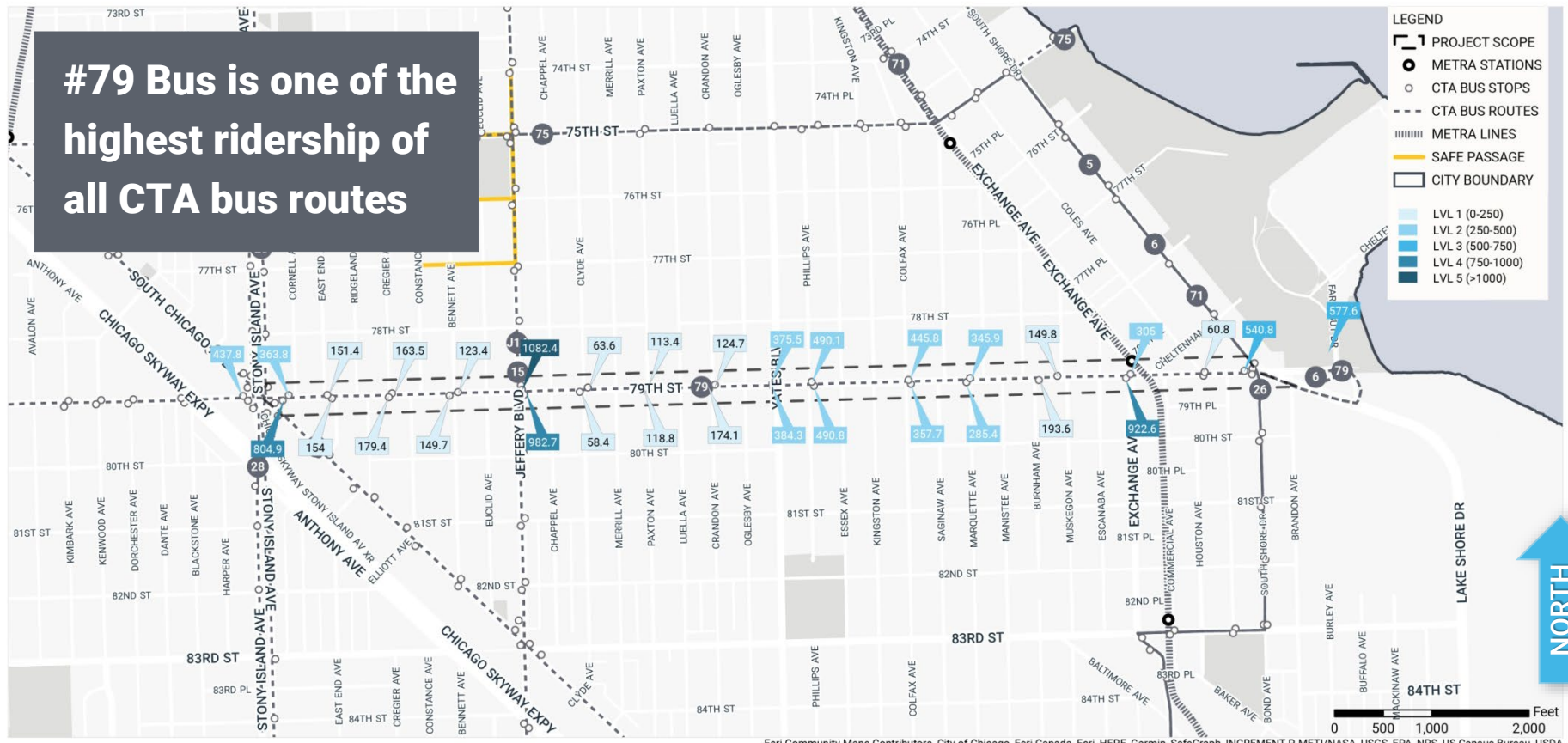
PEDESTRIAN EXPERIENCE

create a welcoming and enjoyable public realm

COMMUNITY IDENTITY

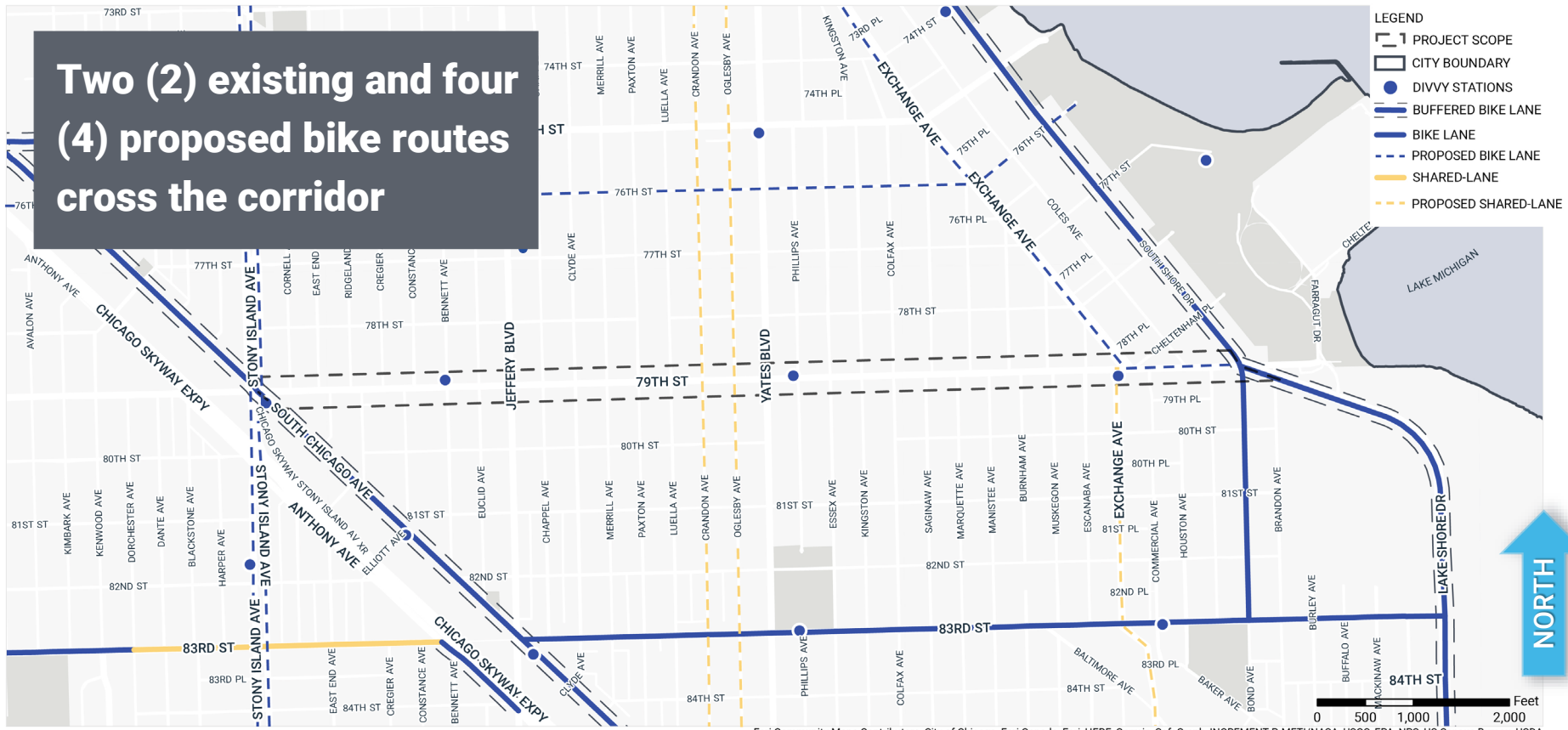
celebrate the corridor's character and cultural history

#79 Bus is one of the highest ridership of all CTA bus routes



Esri Community Maps Contributors, City of Chicago, Esri Canada, Esri, HERE, Garmin, SafeGraph, INCREMENT P, METI/NASA, USGS, EPA, NPS, US Census Bureau, USDA

Two (2) existing and four (4) proposed bike routes cross the corridor



Esri Community Maps Contributors, City of Chicago, Esri Canada, Esri, HERE, Garmin, SafeGraph, INCREMENT P, METI/NASA, USGS, EPA, NPS, US Census Bureau, USDA

11,600 ADT

Yates/79th is a key intersection for pedestrian safety needs

LEGEND

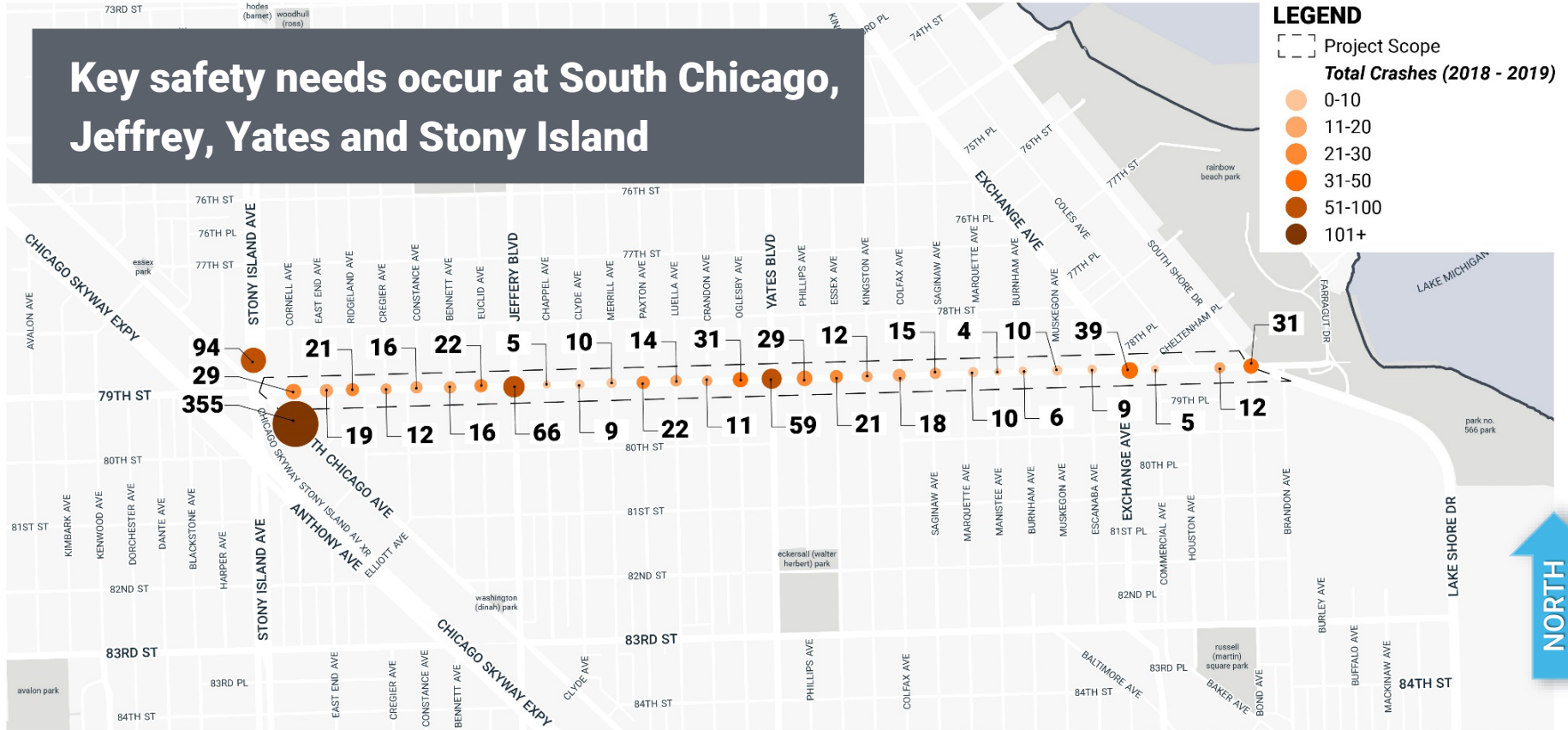
- Project Scope
- Pedestrian Crashes (2018 - 2020)**
- 1-2
- 3-6
- 7-20



Esri Community Maps Contributors, City of Chicago, Esri Canada, Esri, HERE, Garmin, SafeGraph, INCREMENT P, METI/NASA, USGS, EPA, NPS, US Census Bureau, USDA

11,600 ADT

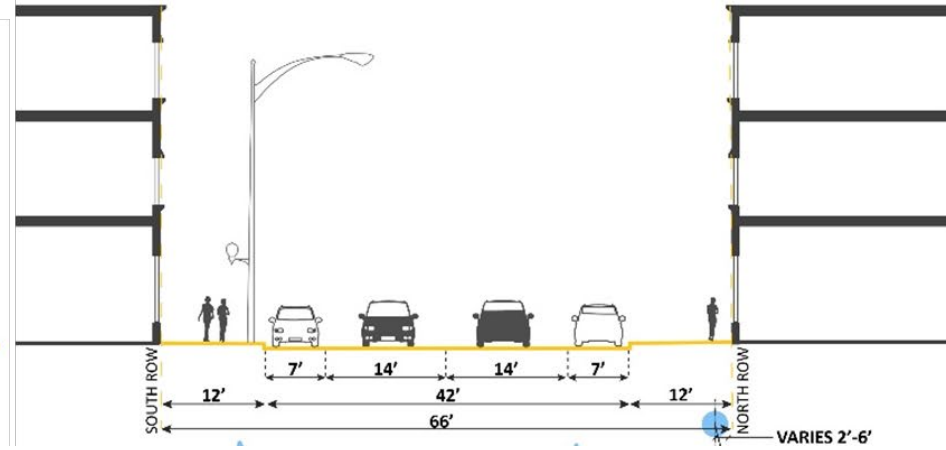
Key safety needs occur at South Chicago, Jeffrey, Yates and Stony Island



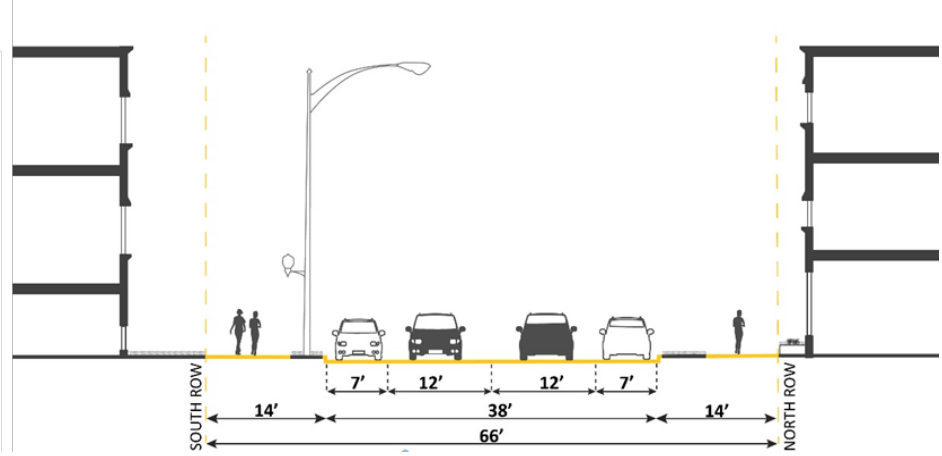
Esri Community Maps Contributors, City of Chicago, Esri Canada, Esri, HERE, Garmin, SafeGraph, INCREMENT P, METI/NASA, USGS, EPA, NPS, US Census Bureau, USDA



79th and S Bennett
metered parking - both sides
bus stop (west bound)



79th and S Coles

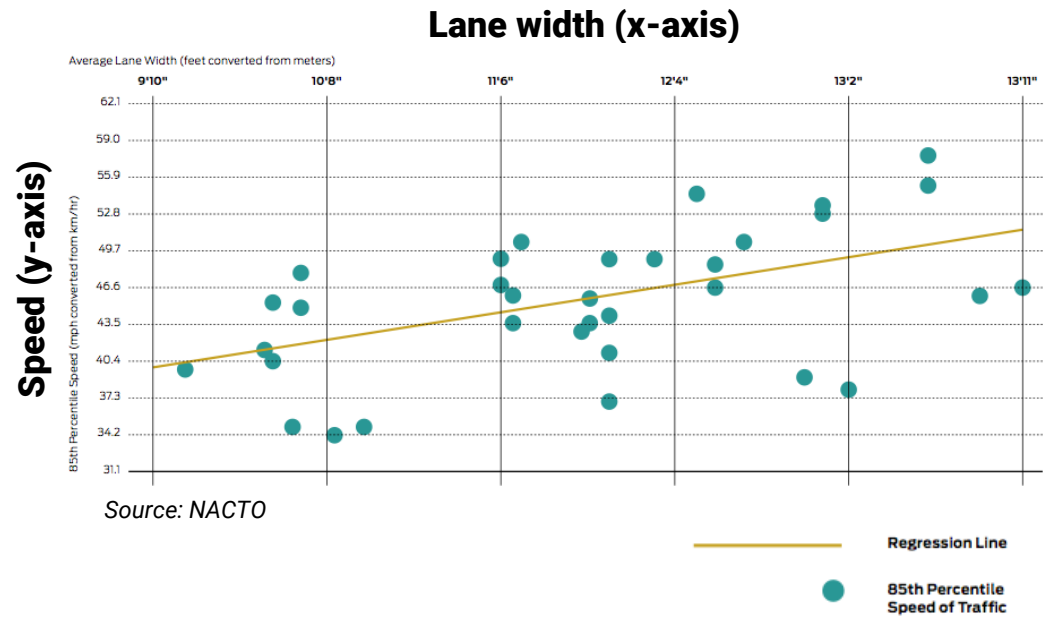


Wider travel lanes are correlated with higher vehicle speeds without limiting traffic flow.

Per the National Association of City Transportation Officials (NACTO):

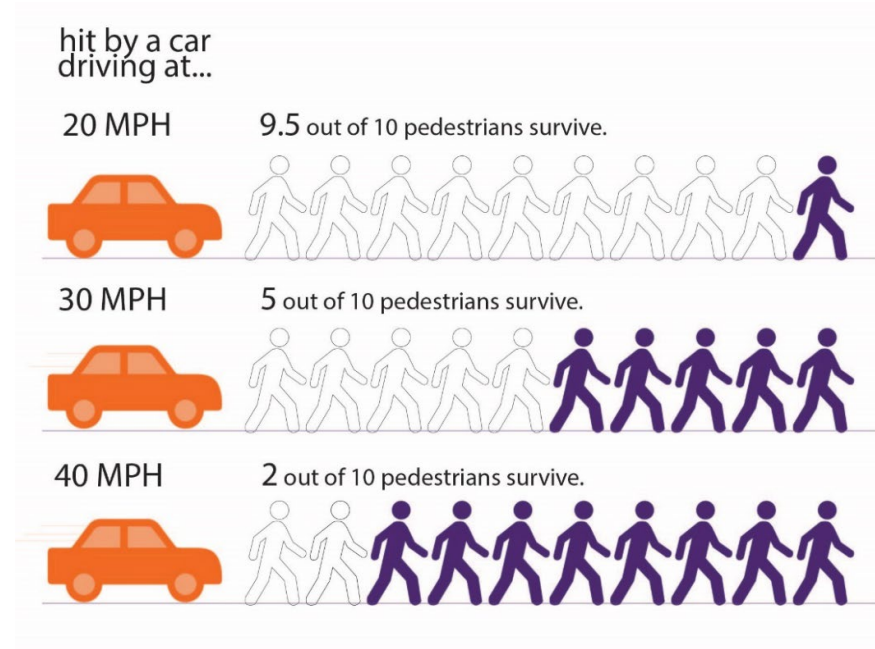
- 10-foot lanes are appropriate on major streets in urban settings
- 11-foot lanes may be preferred where larger vehicles (such as bus or truck traffic)

"As the width of the lane increased, the speed on the roadway increased... When lane widths are 1 m (3.3 ft) greater, speeds are predicted to be 15 km/h (9.4 mph) faster."



Narrowing travel lanes can...

- Allow for fewer opportunities for speeding and aggressive driving
- Decrease the frequency of crashes.
- Slow vehicular speeds
- Decrease crossing distance for pedestrians



Higher speeds are correlated with higher crash severity.

New curb bump-outs on side streets

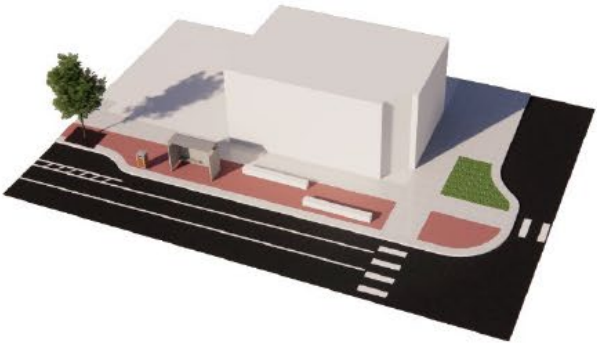
- Shorten pedestrian crossing distance
- Enhance visibility between motorists and pedestrians
- Slower turning speeds around corners
- Eliminate illegal parking in the corner clearance zone
- Allow for more sidewalk space at intersections



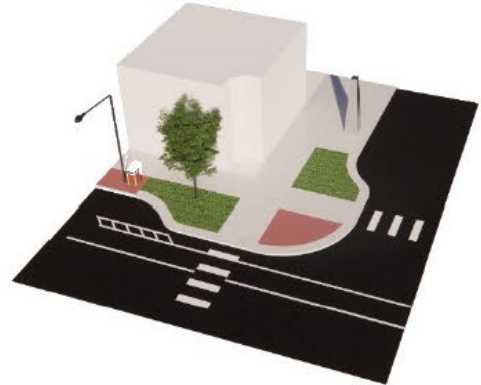
Example Curb Bump-Outs



Enhanced Visibility at Curb Bump-Out



Pedestrian Focused



Planting Focused



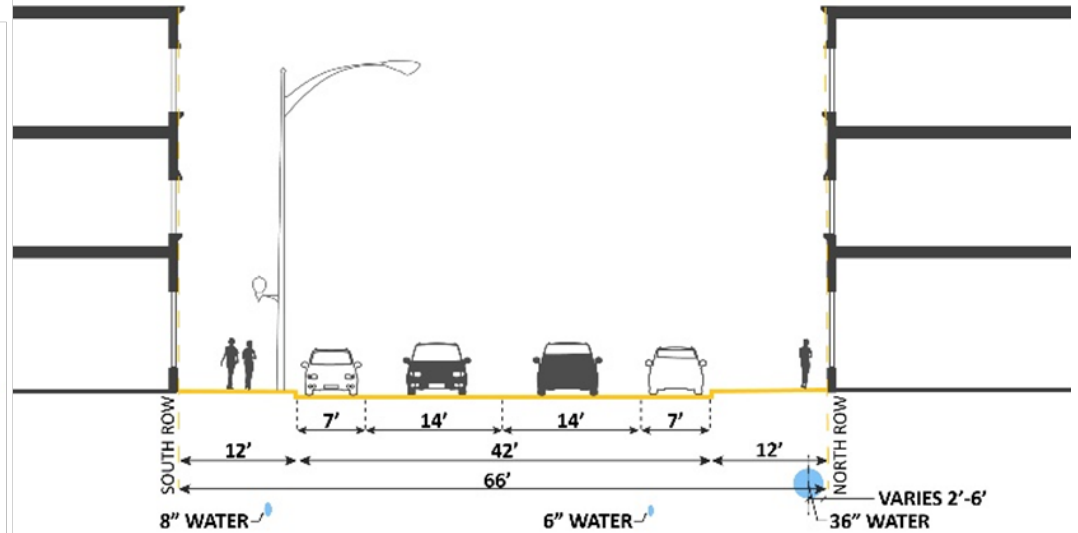
Plaza Extension

WEST END - 79TH AND S BENNETT



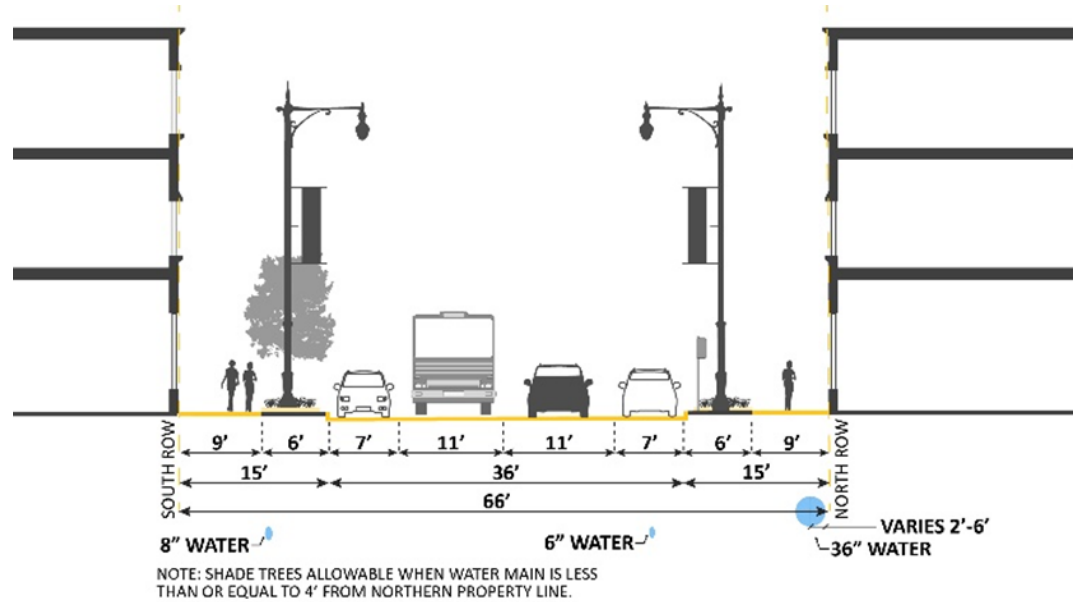
79th and S Bennett
metered parking - both sides
bus stop (west bound)

EXISTING



RECOMMENDATIONS

- Reduce travel and parking lane widths
- Provide new Gateway light poles
- Provide ornamental trees in ground planters on the south side of the street
- Provide specialty paving and furnishings
- Provide identifier elements

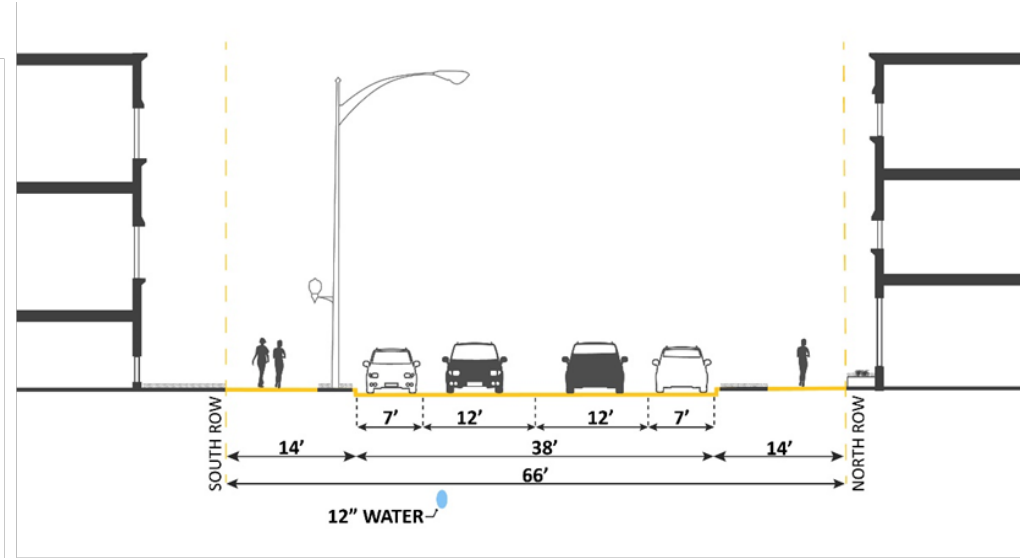


EAST END - 79TH AND S COLES



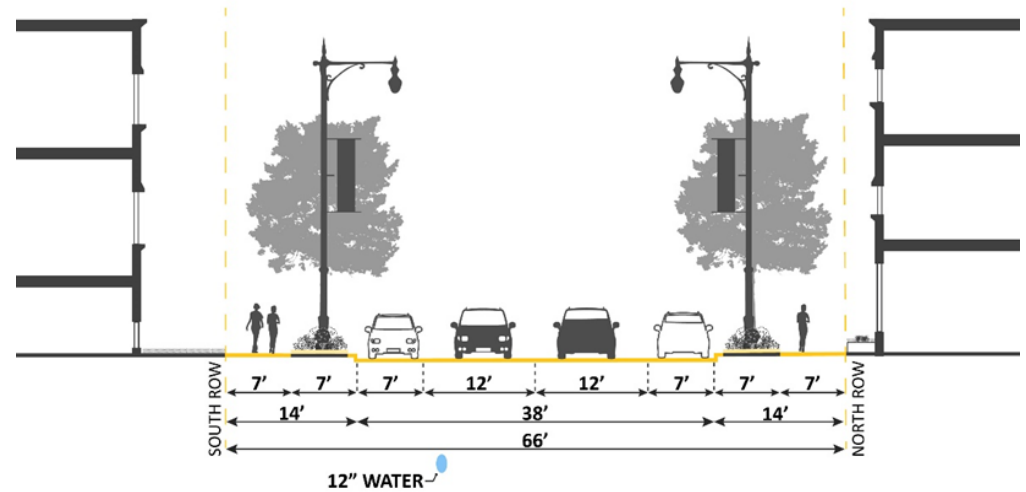
79th and S Coles

EXISTING



RECOMMENDATIONS

- Provide Gateway light poles
- Provide shade trees on the south and north side of the street
- Provide specialty paving and furnishings
- Provide identifier elements
- Provide planters with enhanced landscape



Which intersection do you find the most challenging as a pedestrian?

(SEE ACTIVITY BOARDS 1a-c)

1a WHICH INTERSECTION DO YOU FIND THE MOST CHALLENGING AS A PEDESTRIAN?

HOW TO VOTE: Use red sticky dots to vote for challenging intersections and green sticky dots to identify additional placemarking ideas along the section of 79th Street. (Sticky dots found in a plastic bag attached to this board.)

NOTE: You may overlap other sticky dots.

EXAMPLE:



Put on your thinking cap!



79TH STREET CORRIDOR IMPROVEMENTS



1b WHICH INTERSECTION DO YOU FIND THE MOST CHALLENGING AS A PEDESTRIAN?

HOW TO VOTE: Use red sticky dots to vote for challenging intersections and green sticky dots to identify additional placemarking ideas along the section of 79th Street. (Sticky dots found in a plastic bag attached to this board.)

NOTE: You may overlap other sticky dots.

EXAMPLE:



Put on your thinking cap!



79TH STREET CORRIDOR IMPROVEMENTS



1c WHICH INTERSECTION DO YOU FIND THE MOST CHALLENGING AS A PEDESTRIAN?

HOW TO VOTE: Use red sticky dots to vote for challenging intersections and green sticky dots to identify additional placemarking ideas along the section of 79th Street. (Sticky dots found in a plastic bag attached to this board.)

NOTE: You may overlap other sticky dots.

EXAMPLE:



Put on your thinking cap!



79TH STREET CORRIDOR IMPROVEMENTS



PEDESTRIAN SAFETY

enhance the corridor's walking environment

PEDESTRIAN EXPERIENCE

create a welcoming and enjoyable public realm

COMMUNITY IDENTITY

celebrate the corridor's character and cultural history



SIT



GATHER AND SOCIALIZE



DINE



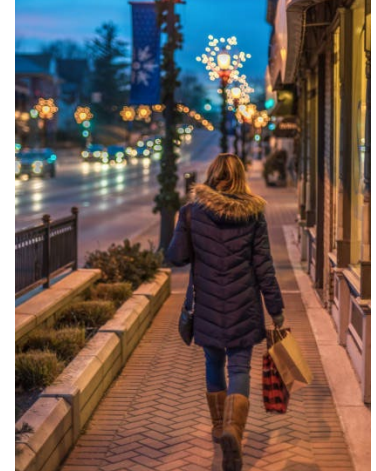
LANDSCAPE



WAYFINDING



SHADE



LIGHT



DECORATIVE PAVING



BIKE PARKING



TRASH AND RECYCLING

STREETSCAPE COMPONENTS

ROADWAY LIGHTING



CHICAGO GATEWAY POLE



DAVIT POLE

PEDESTRIAN/SIDEWALK LIGHTING



DOUBLE ACORN



SINGLE ACORN

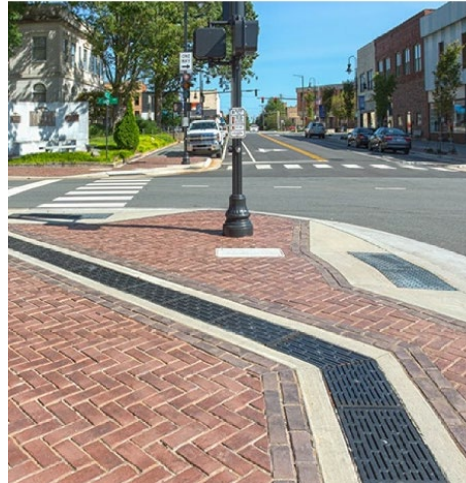
STREET LIGHTING



MODERN



TRADITIONAL



MOORISH



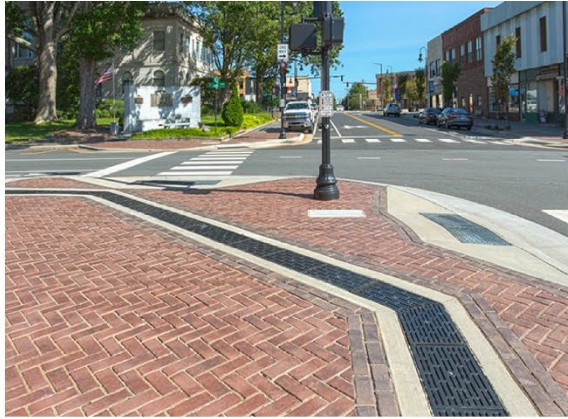


MODERN



Proposed Development Location
79th & Exchange



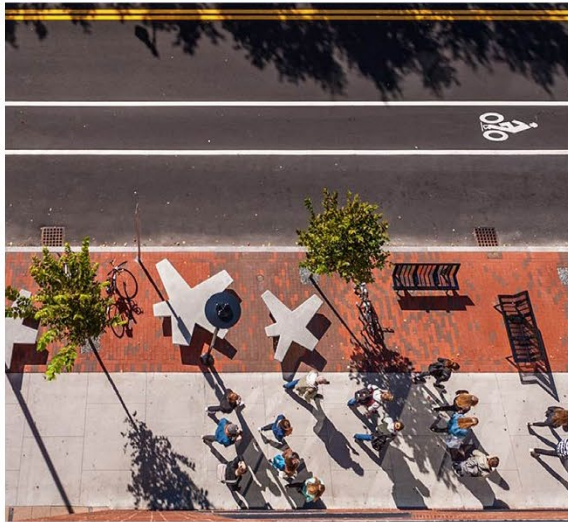


The Barbershop Building
E 79th St and S Exchange Ave

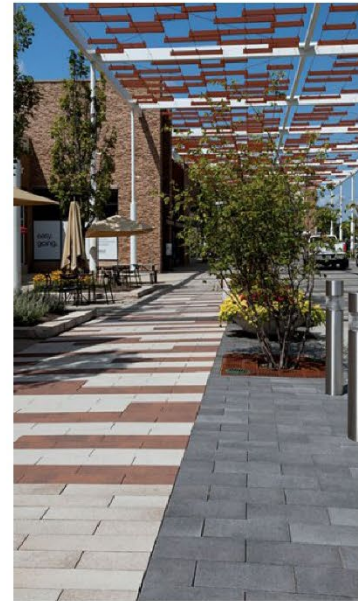
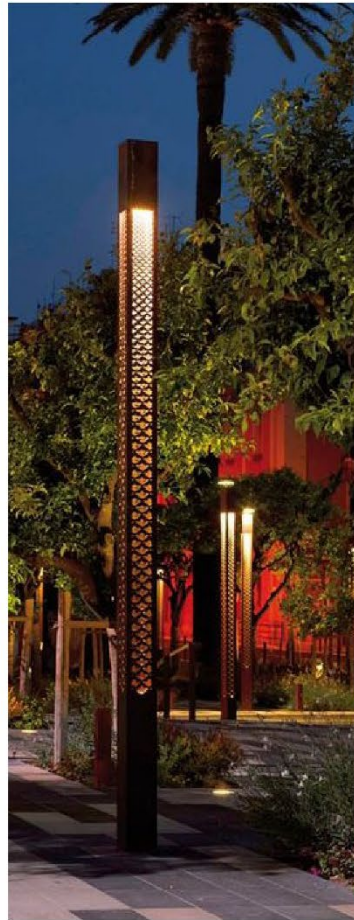


TRADITIONAL/ HISTORIC





The Regal Theater
1645 E 79th St



MOORISH REVIVAL



What is your preferred Corridor Character?

(SEE ACTIVITY BOARD #2)

2 CHOOSE YOUR PREFERRED CORRIDOR CHARACTER:

HOW TO VOTE: These image groups illustrate various character options for the 79th Street Corridor. Use a sticky dot (found in a plastic bag attached to this board) to vote for your desired Corridor Character Option.

EXAMPLE: 

Modern



Moorish Revival



Traditional/Historic



79TH STREET CORRIDOR IMPROVEMENTS

PEDESTRIAN SAFETY

enhance the corridor's walking environment

PEDESTRIAN EXPERIENCE

create a welcoming and enjoyable public realm

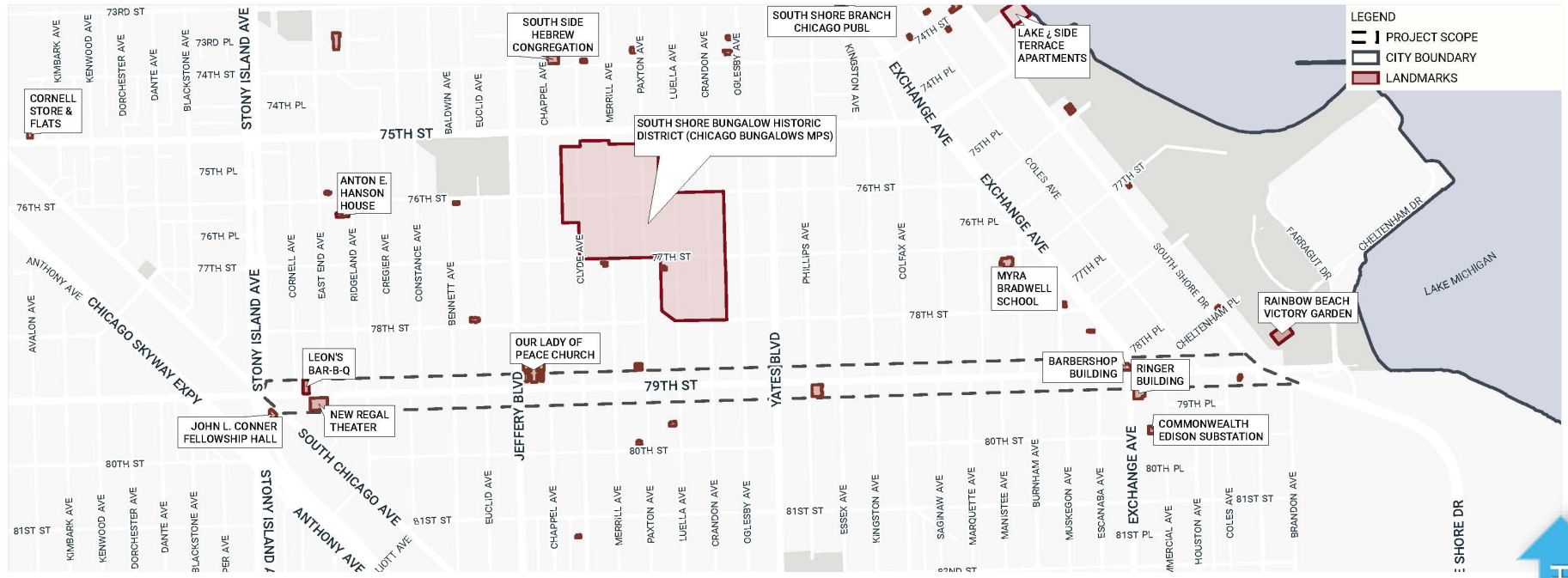
COMMUNITY IDENTITY

celebrate the corridor's character and cultural history









Leon's Bar-B-Q / Unity Mural



Regal Theater



Our Lady of Peace Church



Barbershop Building



Ringer Building





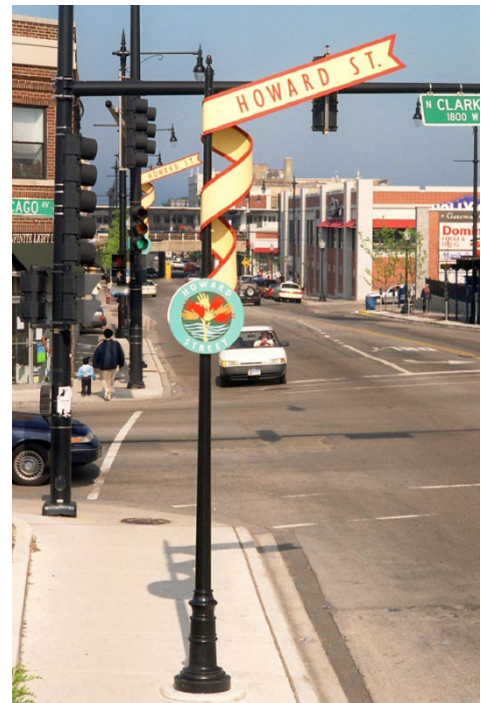
LIGHTPOLE BANNER



SIDEWALK MEDALLION



MAJOR GATEWAY



MINOR GATEWAY

WHAT MAKES THIS CORRIDOR UNIQUE?

What are other identifying features of the neighborhood?

Tell us your thoughts!

Open discussion notes here...

- XX

LOCAL ARTIST CONCEPT

Artist: Damon Reed

Narrative:

REGAL THEME

If you live on the South Side of Chicago, then you know the mystique of the Avalon Regal Theater. Everyone has performed there from Kanye to Josephine Baker and from Tupac to Michael Jackson. People would put on their best outfits, adorn themselves in their most expensive jewelry and get their hair done for an evening at the Regal. This Landmark displays the most captivating mural in Chicago, painted by Mitchell Caton and Calvin Jones, who was legally blind at the time of painting the masterpiece. The mural shows multiple portraits of black entertainers, juxtaposed with bold color patterns. The halls of the Regal are filled with ornamental patterns and filled with gold textures. The moorish style adds a sacredness to the overall experience. The lavish architectural elements along with the detailing of the mural make The Avalon Regal theater the most unique structure around. The prestige, the Regal-ness of the theater is the attitude all should carry. The residents in South Shore should walk with their heads high and a sense of dignity in their heart. Regal and Royal are akin to each other. When you think of Royalty, you think of dignity, wealth, power. This is a total contrast from closed businesses and dilapidated buildings. This corridor theme will not only enhance the profile of 79th street, but subconsciously instill that Regal-ness into the south shore residents. This way of thinking, the beauty, the attitude, and the art brought me to the Regal-themed corridor, which visually brings together an art deco style inspired by African elements.

COLOR PALETTE

Gold, Black, Turquoise

Secondary colors

White, Maroon(Deep Red), Raw Sienna



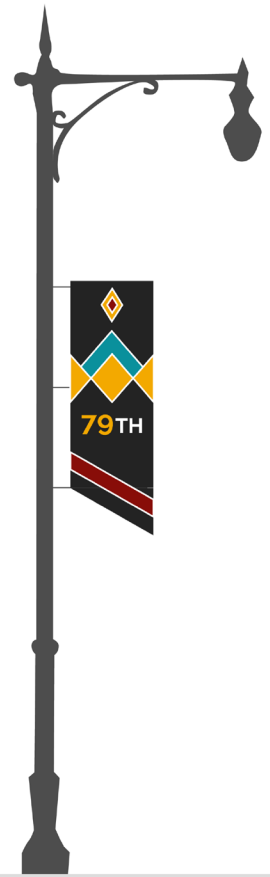
COMMUNITY IDENTITY











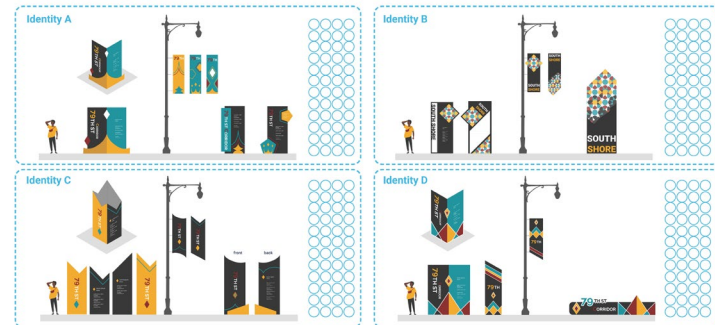
What is your preferred choice for Community Identity?

(SEE ACTIVITY BOARD #3)

3 CHOOSE YOUR PREFERRED COMMUNITY IDENTITY:

HOW TO VOTE: These graphics illustrate various identity options for the 79th Street Corridor. Use a sticky dot (found in a plastic bag attached to this board) to vote for your desired community identity.

EXAMPLE:

79TH STREET CORRIDOR IMPROVEMENTS   

PLACEMAKING

PEDESTRIAN SAFETY

enhance the corridor's walking environment

PEDESTRIAN EXPERIENCE

create a welcoming and enjoyable public realm

COMMUNITY IDENTITY

celebrate the corridor's character and cultural history

What is Placemaking?

Placemaking makes use of underutilized space to enhance the pedestrian experience, amplify history and character, and support community activities. It includes:



Unique and Context-Sensitive Design



Public Art and Identifying Features



Community Gathering & Event Space



Places to Sit, Socialize, Eat, and Move


Why Placemaking?

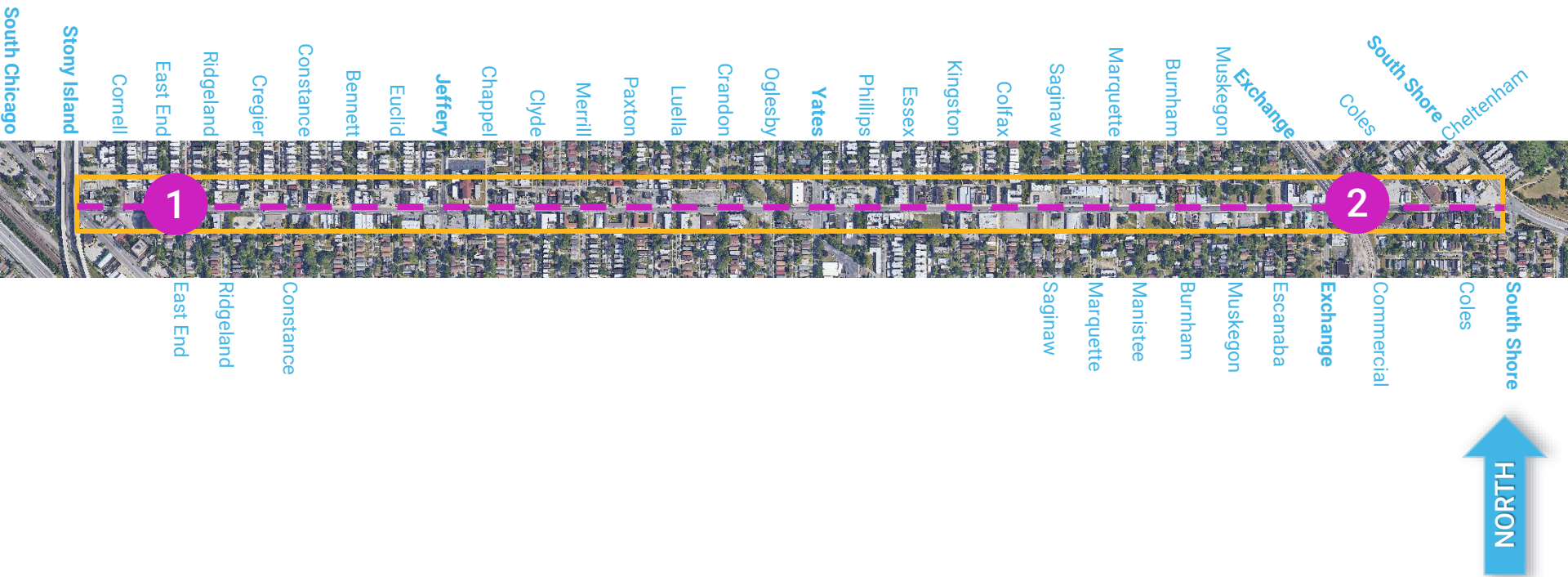
- A. Fosters sociability and **community gathering**
- B. Promotes **active uses** and events
- C. Improves **access** and connections
- D. Increases **comfort** and image of an area
- E. Strengthens bonds between **people and place**

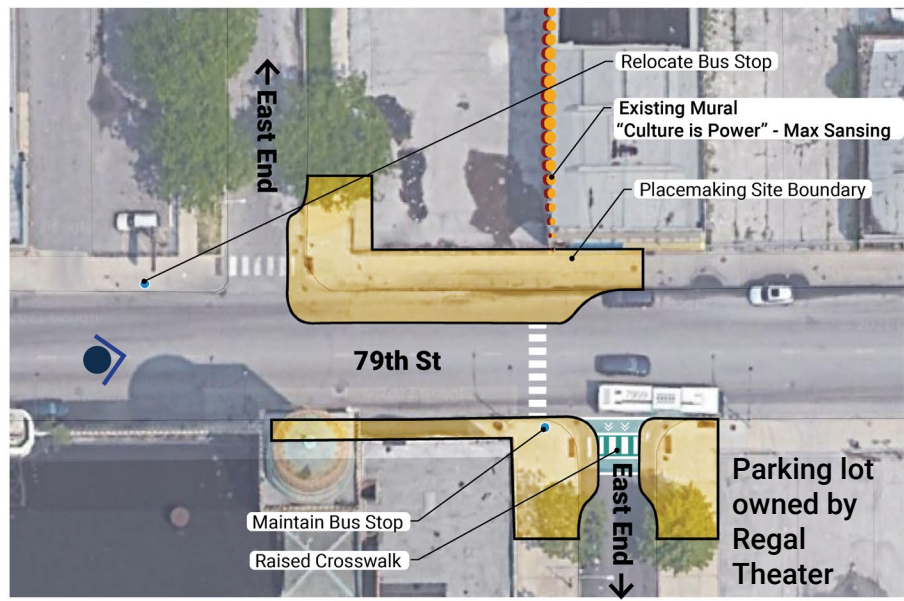
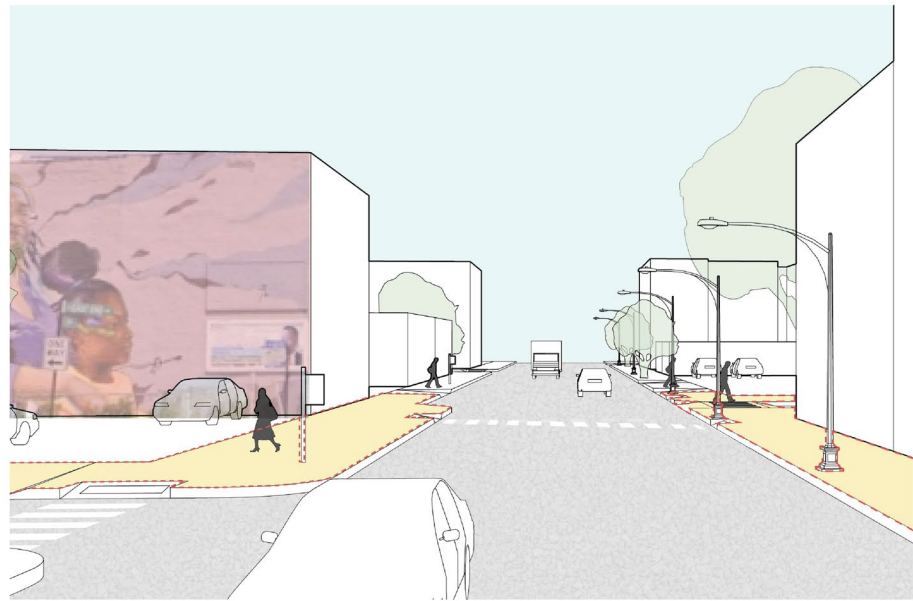
PLACEMAKING SITES

 Project Limit

 **Placemaking Sites**
Key sites for community gathering.

 **Corridor-wide Placemaking**
Includes identity features, bumpouts, and seating opportunities.





What would you like to see at this Placemaking Site?

(SEE ACTIVITY BOARD 4)

4
PLACEMAKING SITE
1
PRIORITIES

KEY MAP



Plan Concept



Identity



● Axon

HOW TO VOTE: These images illustrate various placemaking elements for the 79th Street Corridor. Spend your 3 sticky dots (found in a plastic bag attached to this board) to identify your priorities for this location.

Landscape



Gathering and Event Spaces



Identity



Places to Sit



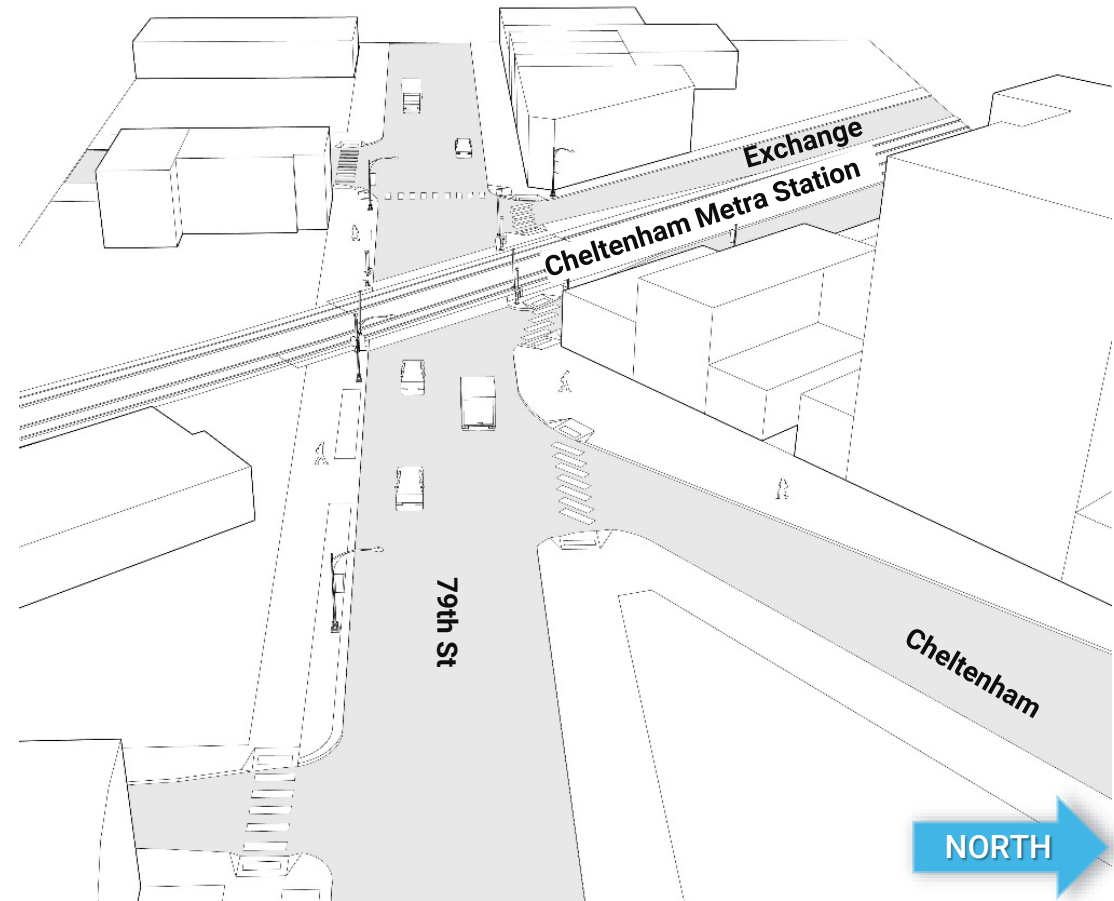
EXAMPLE:



79TH STREET CORRIDOR IMPROVEMENTS

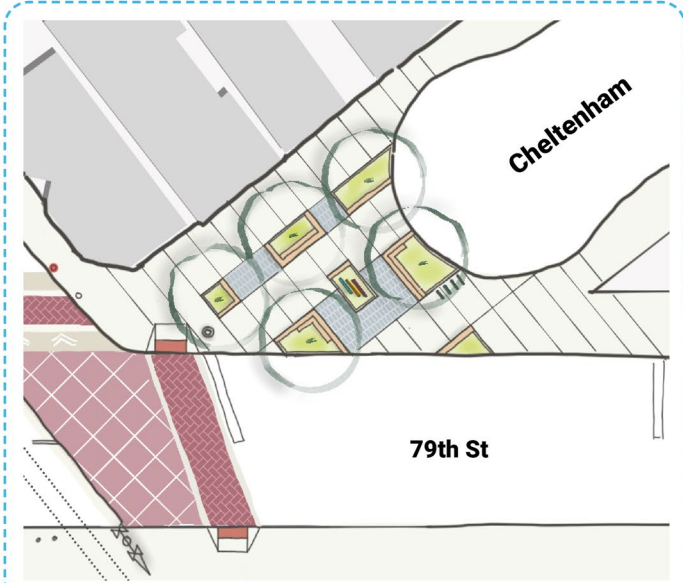








- Stony Island
- East End
- Ridgeland
- Constance
- Bennett
- Euclid
- Jeffery
- Chappel
- Clyde
- Merrill
- Paxton
- Luella
- Crandon
- Oglesby
- Yates
- Phillips
- Essex
- Kingston
- Colfax
- Saginaw
- Marquette
- Manistee
- Burnham
- Muskegon
- Escanaba
- Exchange
- Commercial
- Coles
- South Shore



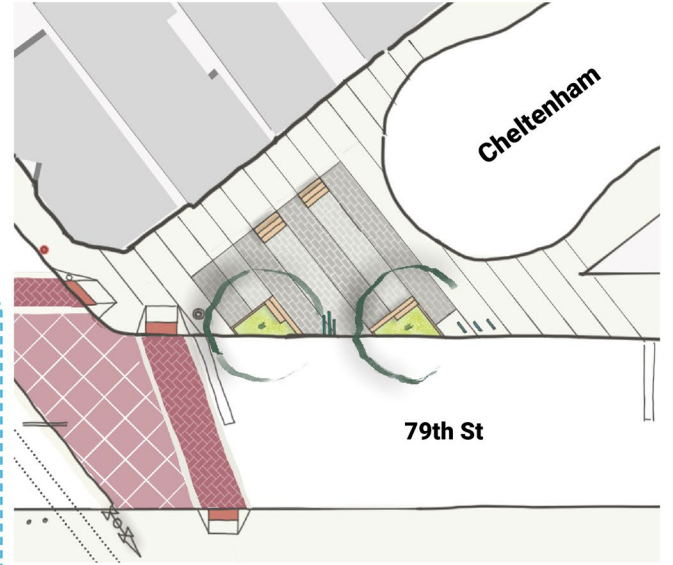
OPTION 1



Large, Open Gathering Spaces



Small Gathering/Seating Areas



OPTION 2

What would you like to see at this Placemaking Site ?

(SEE ACTIVITY BOARD 5)

5
PLACEMAKING SITE
2
PRIORITIES

KEY MAP



Plan Concept



● Axon

HOW TO VOTE: These images illustrate various placemaking elements for the 79th Street Corridor. Spend your 3 sticky dots (found in a plastic bag attached to this board) to identify your priorities for this location.

EXAMPLE:



Landscape




Gathering and Event Spaces




Identity





Places to Sit




79TH STREET CORRIDOR IMPROVEMENTS






Are there other placemaking opportunity sites?

(SEE ACTIVITY BOARDS 1a-c)

1a WHICH INTERSECTION DO YOU FIND THE MOST CHALLENGING AS A PEDESTRIAN?

HOW TO VOTE: Use red sticky dots to vote for challenging intersections and green sticky dots to identify additional placemaking sites along the section of 79th Street. (Sticky dots found in a plastic bag attached to this board)

NOTE: You may overlap other sticky dots.

EXAMPLE: 

Put on your thinking cap!


79TH STREET CORRIDOR IMPROVEMENTS

INVEST SOUTH & WEST CHICAGO WORKS CDOT

1b WHICH INTERSECTION DO YOU FIND THE MOST CHALLENGING AS A PEDESTRIAN?

HOW TO VOTE: Use red sticky dots to vote for challenging intersections and green sticky dots to identify additional placemaking sites along the section of 79th Street. (Sticky dots found in a plastic bag attached to this board)

NOTE: You may overlap other sticky dots.

EXAMPLE: 

Put on your thinking cap!


79TH STREET CORRIDOR IMPROVEMENTS

INVEST SOUTH & WEST CHICAGO WORKS CDOT

1c WHICH INTERSECTION DO YOU FIND THE MOST CHALLENGING AS A PEDESTRIAN?

HOW TO VOTE: Use red sticky dots to vote for challenging intersections and green sticky dots to identify additional placemaking sites along the section of 79th Street. (Sticky dots found in a plastic bag attached to this board)

NOTE: You may overlap other sticky dots.

EXAMPLE: 

Put on your thinking cap!

79TH STREET CORRIDOR IMPROVEMENTS

INVEST SOUTH & WEST CHICAGO WORKS CDOT



NEXT STEPS & Q+A



Refine Concepts – Summer/Fall 2022



Community Meeting #2 – Fall 2022



**THANK YOU! THANK YOU!
THANK YOU!**

We appreciate **YOU taking the time to join us!**

Contact Us by visiting <https://chicagocompletestreets.org/portfolio/isw-south-shore/>
there is a comment box there that can be used to reach the Project Manager.

