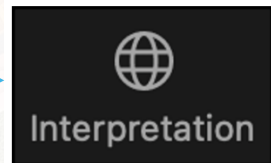
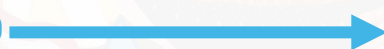


ISW NEW CITY / BACK OF THE YARDS 47TH + ASHLAND CORRIDOR IMPROVEMENTS PUBLIC MEETING #2 | February 3rd, 2022



TRADUCCIÓN EN ESPAÑOL EN VIVO está disponible. Por favor, oprima el SIMBOLO para acceder la traducción.



WELCOME! WELCOME! WELCOME!

We appreciate **YOU** taking the time to join us!

Thank you for joining us as we discuss the **47th Street + Ashland Avenue Corridor Improvements Project**.

The **47th Street + Ashland Avenue Corridor Improvements Project** will revitalize the **47th Street + Ashland Avenue Corridors** and is a key element of the Invest South/West's recent initiatives to reinvest in the **New City/Back of the Yards Neighborhood**.

We need **your** feedback today to **help advance the design**.





We don't want to **miss** anything!

Please be aware that this presentation will be **recorded** for note taking and record keeping purposes

Participation in this presentation acknowledges **consent** of this notification

Everyone working together!

- 01 All attendees will be **MUTED**.
- 02 Please use the **Q&A FUNCTION** to submit questions to be answered during the designated question and answer session.
- 03 All questions and ideas are valid.
- 04 All comments received will be recorded and will be part of the meeting record.
- 05 Respect all other participant opinions and perspectives.
- 06 Use the **CHAT** function if you need technical assistance.



- 01 Introductions
- 02 Project Overview
- 03 Community Outreach – Key Takeaways
- 04 Preliminary Concepts + Recommendations
- 05 Visioning Activities
Keep your smart phones nearby!
- 06 Next Steps



CDOT

Lubka Benak, Project Director, CDOT

Vanessa Irizarry, AICP, Project Manager, CDOT

Stan Przewoznik, PE, Project Manager, CDOT/Knight

Christopher B Burke Engineering, Ltd.

Civil, Structural, Traffic Signal Engineering

- Bryan Luke, PE
- Ben Chavez, PE

Sam Schwartz Consulting, LLC

Transportation Planning

- Stacey Meekins, AICP

Local Artist

- Robert Valadez

Teska Associates, Inc.

Community Outreach Support, Urban Design

- Jodi Mariano, PLA
- Heather Faivre, PLA

Translators

- Samuel Chaj
- Frank Boppel

TranSmart, Inc.

Electrical Engineering

Task 1

Share key community feedback received to date.

Task 2

Present preliminary streetscape themes, concepts, and alternatives.

Task 3

Receive your feedback.



PROJECT OVERVIEW

Supports the Invest South/West initiative to re-activate neighborhood cores that have historically served as focal points for pedestrian activity, shopping, services, transportation, public spaces and quality-of life amenities for residents.

Part of Chicago Works: Mayor Lori E. Lightfoot's five-year capital plan that will Invest in Communities Through Infrastructure.

Streetscapes consist of infrastructure, pedestrian safety, and placemaking improvements with the goal of creating unified, safe, walkable, and attractive street. The streetscape projects are comprehensive and include public right-of-way improvements from building face to building face.

The Project Includes:

- Public Outreach
- Placemaking and urban design strategy
- Concept design & engineering
- Detailed design & engineering
- Construction of the corridor



PROJECT SCOPE



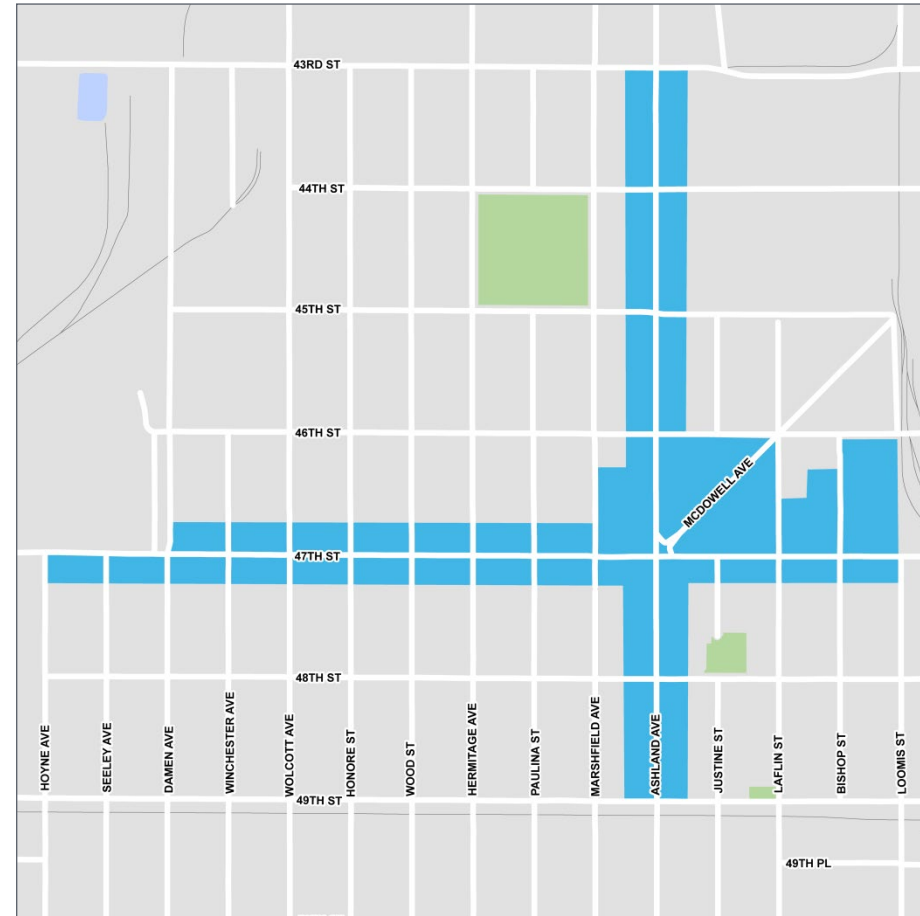
PROJECT OVERVIEW

ISW New City/Back of the Yards

47th St, Loomis to Hoyne and Ashland, 43rd Street to 49th Street

Scope

- Roadway geometry and intersection improvements
- Full width resurfacing
- Drainage improvements
- New sidewalk, curb, and gutter
- Pedestrian safety improvements
- ADA ramps and crosswalks
- Street lighting
- Traffic signal upgrades
- Pavement markings and signage
- Potential paver parkways
- Side street improvements to the alleys as needed
- Site furniture and potential seating areas
- Light pole identifiers
- Gateway identifier
- Tree planting and potential landscaping
- Potential plaza space on the northeast corner of 47th & Ashland and McDowell



PROJECT SCOPE AND LIMITS





Spring 2021

- Project Start-Up
- ISW Roundtable #1
- Existing Conditions Analysis

Summer / Fall 2021

- ISW Roundtable #2
- Public Meeting #1
- Online Survey #1
- Stakeholder Interviews
- Preliminary Concepts

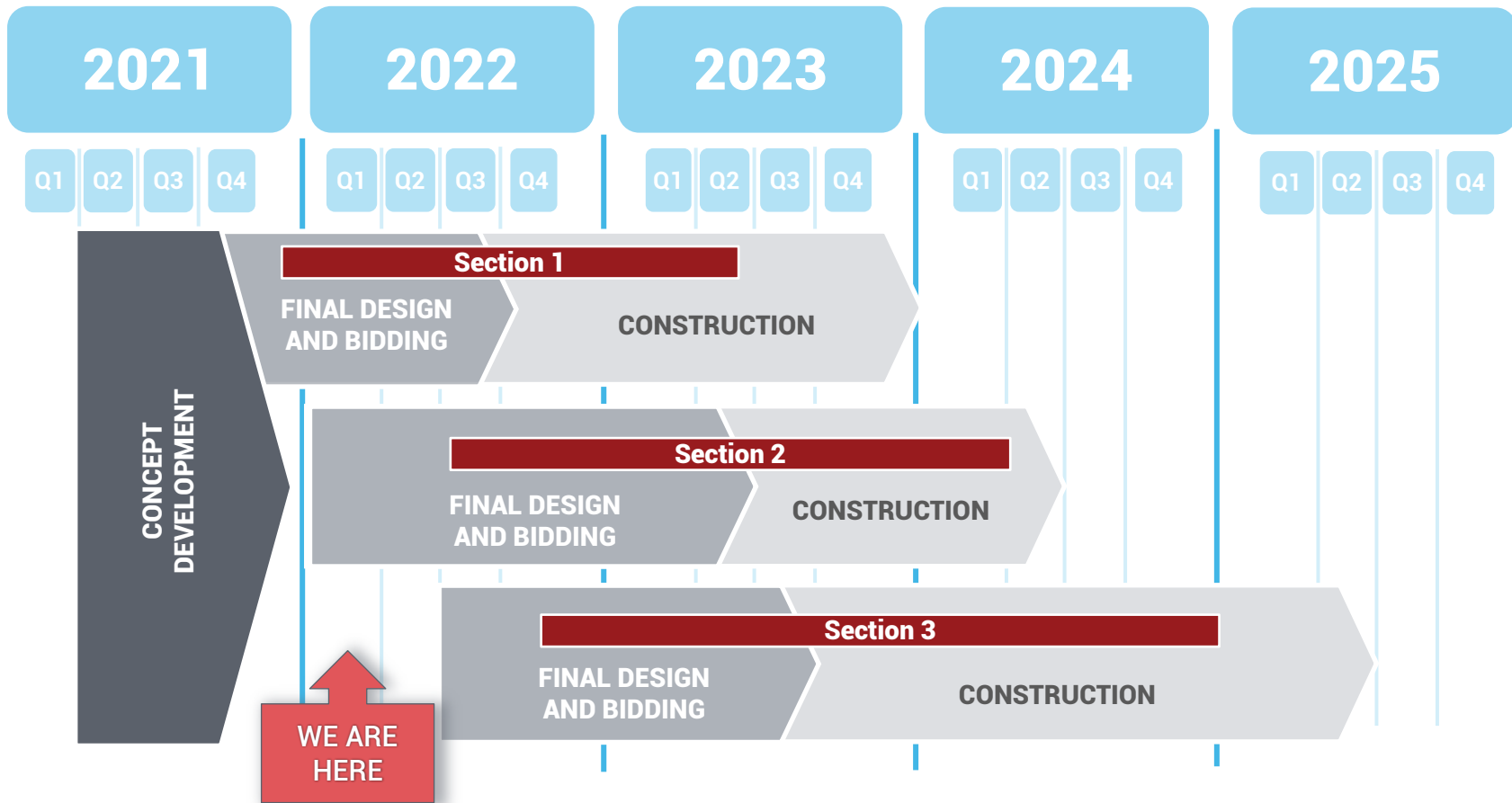
Winter 2022

- ISW Roundtable #3 + #4
- Public Meeting #2
- Online Survey #2
- Preferred Concepts

Spring 2022

- ISW Roundtable #5
- Public Meeting #3





PAST EVENTS

ISW Roundtables:	May 20, Aug 5, Sept 16, Nov 18
Public Meeting #1	August 25, 2021, zoom videoconference
Online Survey #1	Sept 16 – October 15
Focus Group Meetings	October 18-19 Businesses October 26-27, Residents

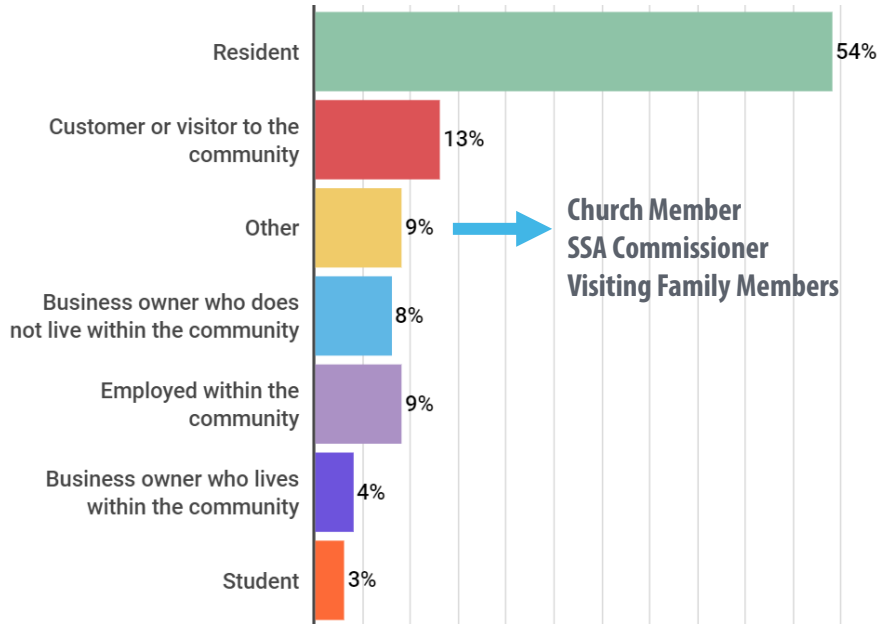
UPCOMING EVENTS

Online Survey #2	February-March 2022
Additional Focus Groups	Spring 2022
Public Meeting #3	Spring 2022

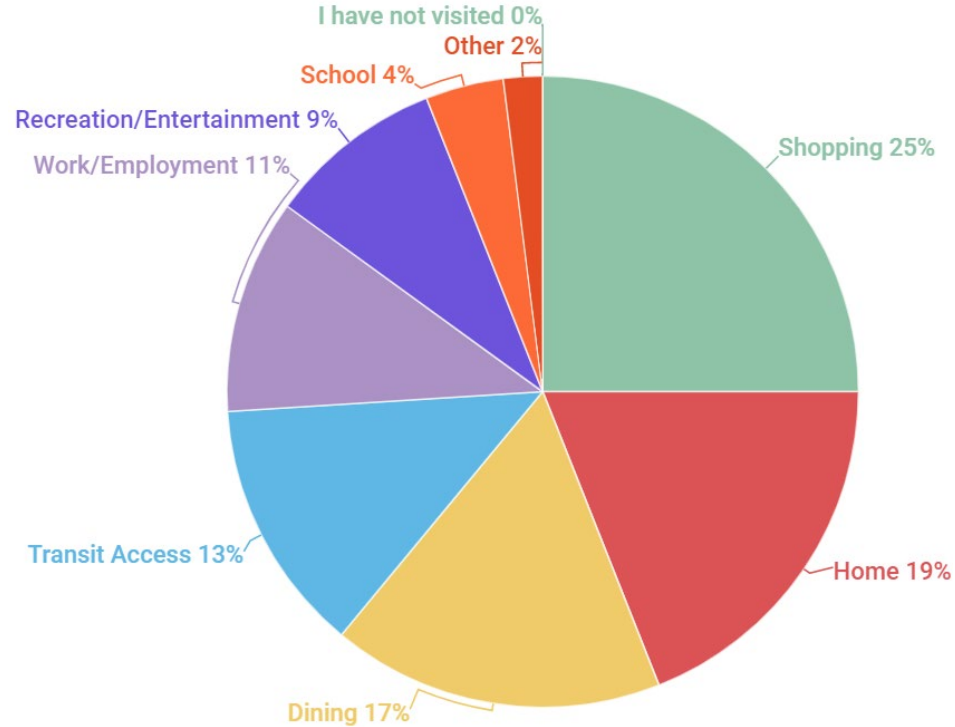
KEY TAKEAWAYS



How are you connected to New City/Back of the Yards?



Select the reasons for your trips during the past year to the 47th Street/Ashland Avenue Corridor



KEY TAKEAWAYS



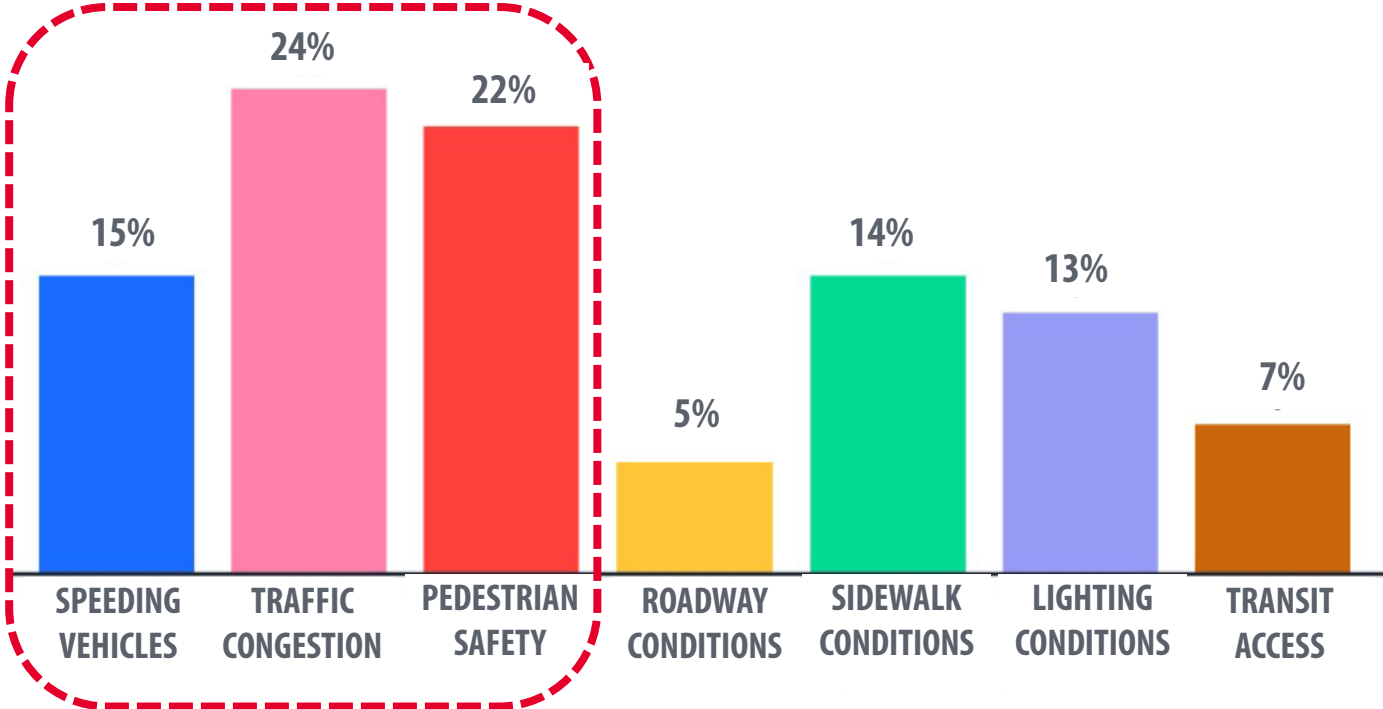
When traveling along 47th/Ashland, how often do you use the following modes of transportation?

	Daily	At least once per week	At least once per month	Rarely	Never
Walk	28%	34%	7%	23%	8%
Bike	2%	7%	10%	16%	65%
Ride a bus	6%	9%	21%	33%	31%
Drive/ride in a vehicle	60%	26%	9%	4%	1%
Use rideshare	0%	6%	23%	33%	38%

KEY TAKEAWAYS



What are your main CONCERNS about the corridors? (select 3)



KEY TAKEAWAYS



Rank your traffic concerns for the corridors

TRAFFIC CONCERNS



KEY TAKEAWAYS



Rank your general concerns for the corridors



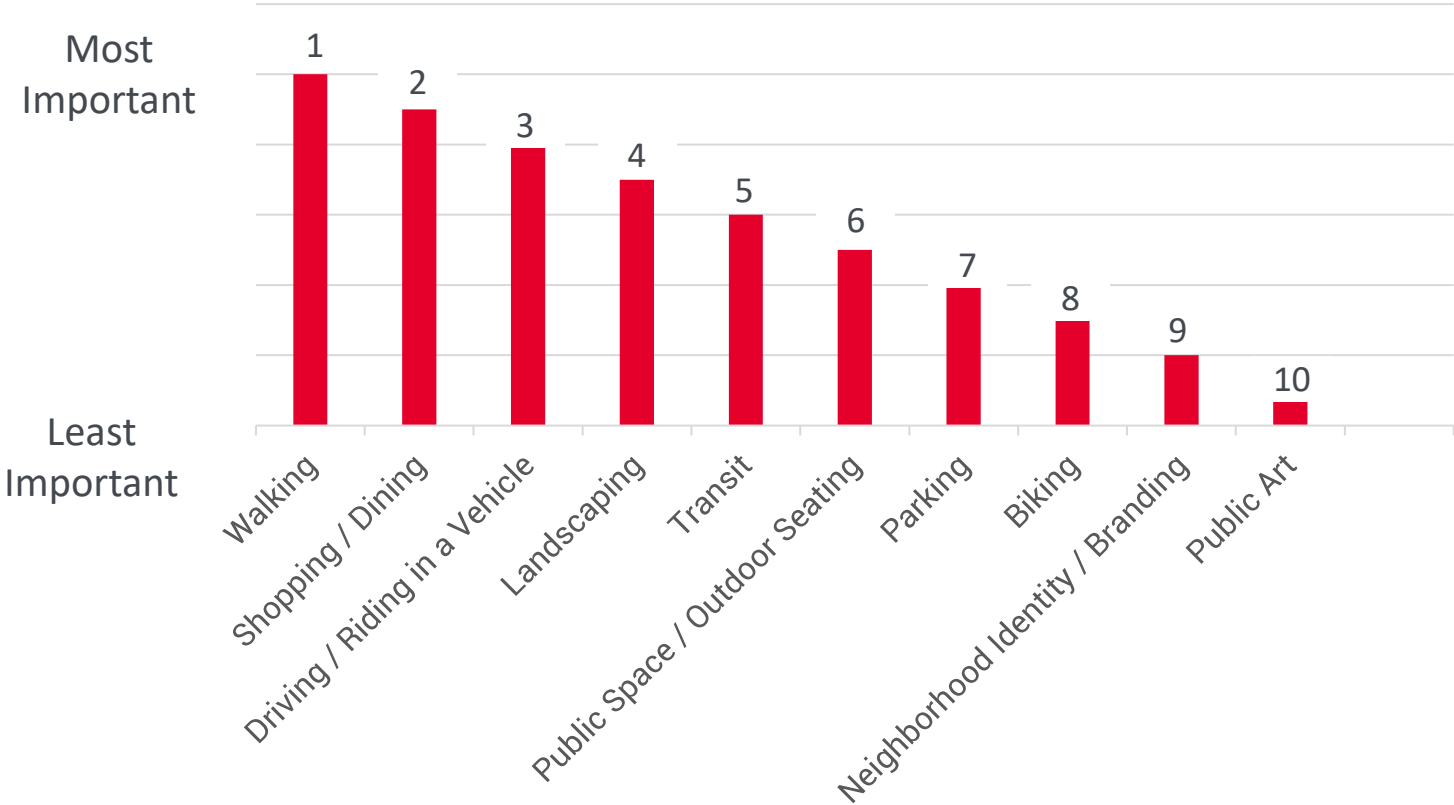
KEY TAKEAWAYS



KEY TAKEAWAYS: ROADWAY FEATURES

- 1** **Transportation concerns include speeding cars, double-parked vehicles, and congestion.** Streetscape design should balance traffic flow with more pedestrian friendly sidewalks.
- 2** **There is a concern about lack of lighting.** More lighting is desired along the corridor.
- 3** **More trees, greenery, and beautification are desired along 47th and Ashland.**

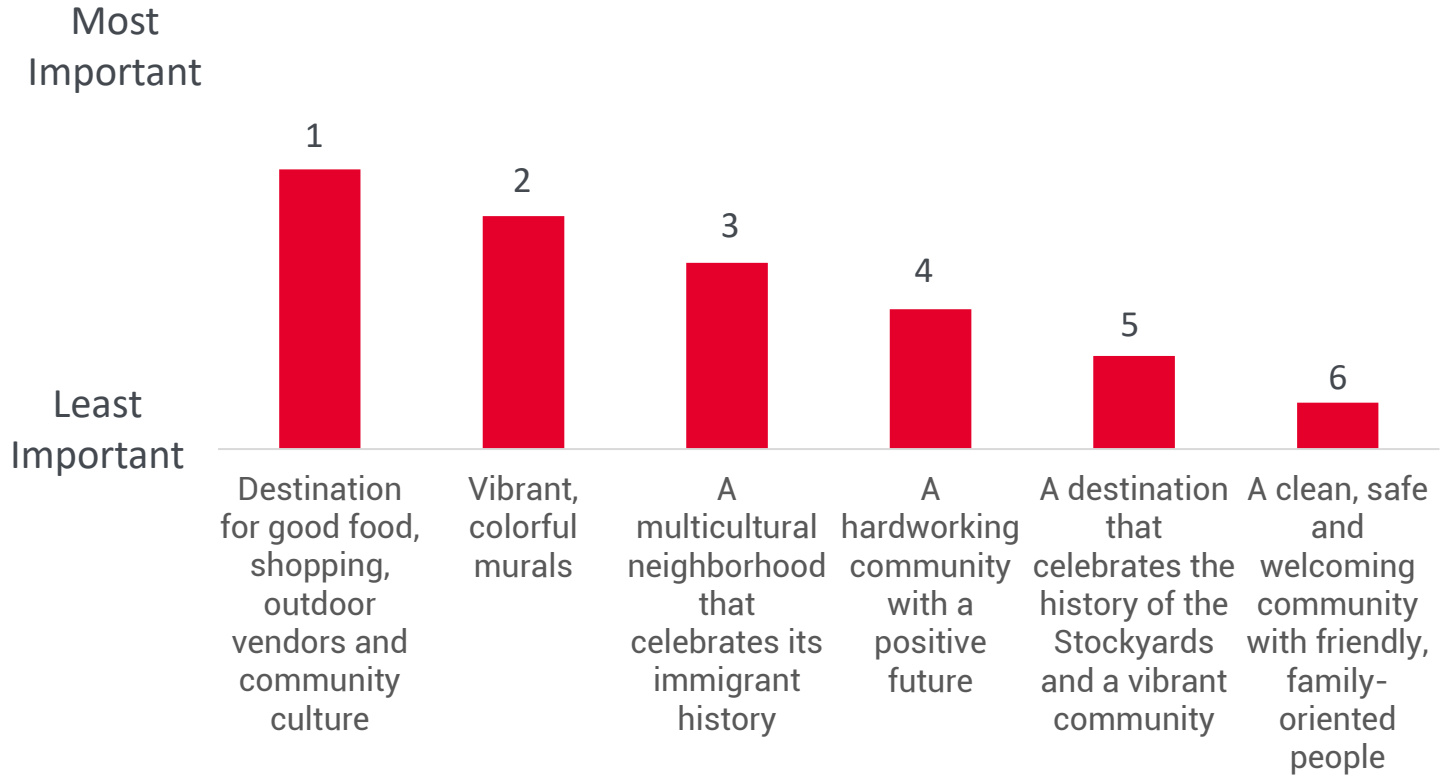
What do you want to see prioritized for the 47th/Ashland Corridor project?



KEY TAKEAWAYS



What do you want the corridors to be known for?



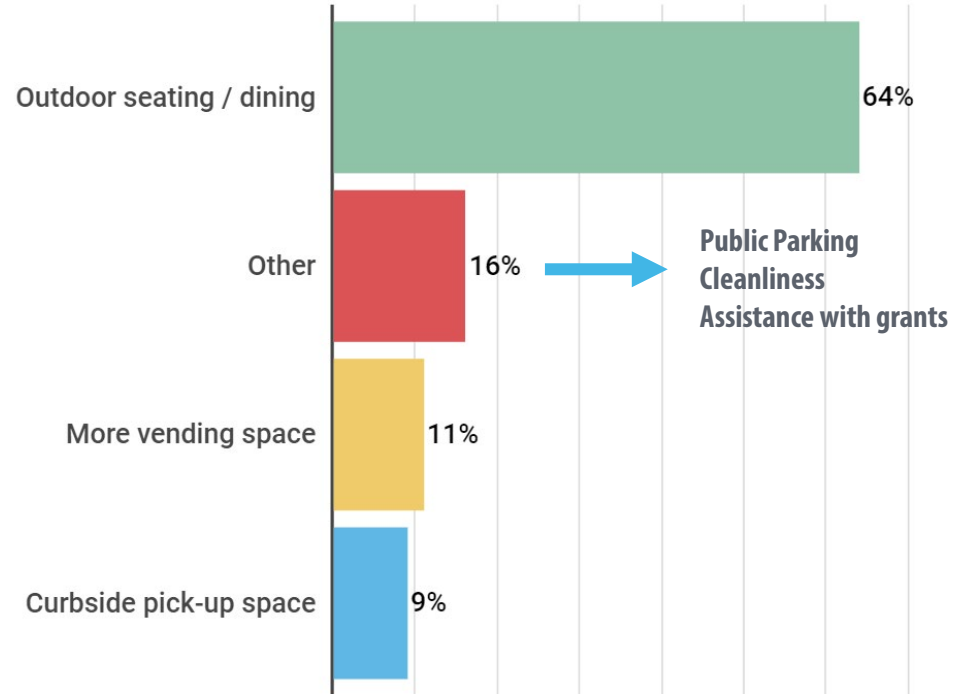
KEY TAKEAWAYS



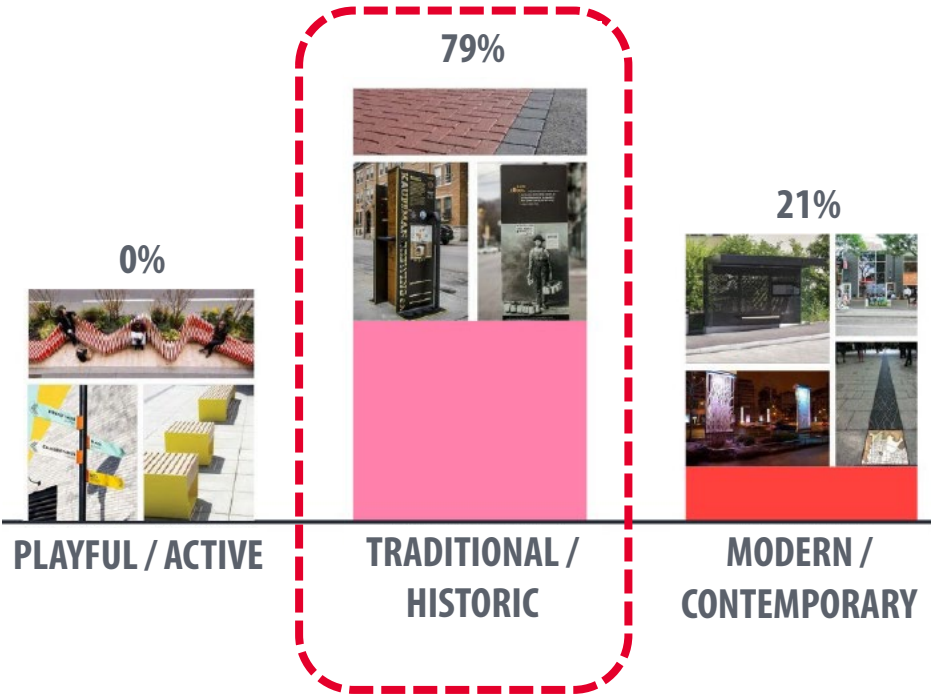
KEY TAKEAWAYS: PLACEMAKING

- 1 The 47th Street / Ashland Avenue / McDowell Avenue intersection is challenging for pedestrians.** There is support to close the McDowell Ave slip lanes and reclaim portions of the street for public gathering and community expression.
- 2 The 47th Street / Damen Avenue green space is used for holiday tree lighting events.** There is interest to further support public gathering, walking paths and green spaces.
- 3 Sidewalks and open spaces should be reclaimed for public seating, gathering, greening, and community expression,** especially at side street areas adjacent to businesses.

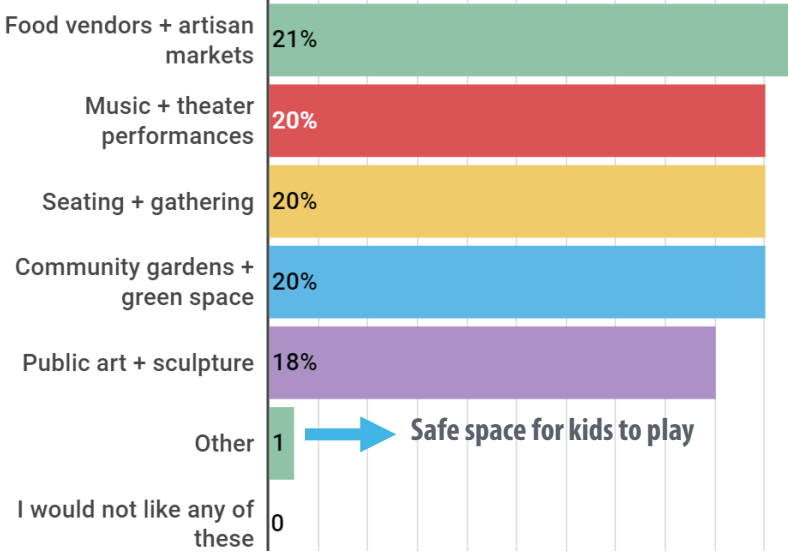
Along 47th STREET, what types of improvements would support businesses?



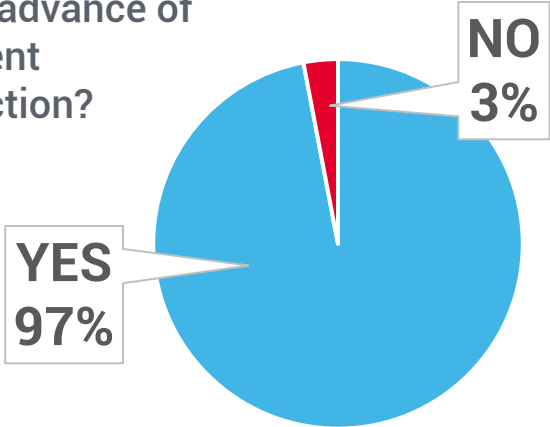
What is your preferred aesthetic theme for the corridor?



If McDOWELL AVE were to become a plaza, what types of activities / functions would you like to see?



Would you support the temporary closure of the slip lanes at 47th and McDowell to create an interim plaza in advance of permanent construction?



What other ideas should we explore?

1. McDowell Plaza is an opportunity to showcase neighborhood history + culture
2. Provide better accessibility for everyone
3. Maintain cleanliness throughout the corridors
4. Incorporate sustainability, including bioinspired methods, clean energy, recycling, composting + native plantings
5. Establish designated bus and bike lanes with better access to the Western Orange Line Station; more Divvy Stations
6. More community related garden spaces and art, including murals and painted benches
7. Plant more trees along 47th Street
8. People here are hard working and care a lot for each other

Key Takeaways

1. BOTY's mix of Mexican, Latin American, and African American cultures contribute to a unique shopping district full of vibrant businesses, street cart vendors, and colorful murals.
2. Corridor challenges include speeding traffic, double-parked cars, traffic congestion, light level concerns, and a lack of pedestrian friendly sidewalks.
3. Sidewalks and open spaces should be reclaimed for seating, gathering, greening, and community expression.
4. There is a desire to express where BOTY came from, including references to important moments in history, such as the Union Stockyards, The Jungle, railroad history, Mary McDowell Settlement House, Church Towers, and Saul Alinsky. (*"We are missing our history"*)
5. The streetscape can help *"put BOTY in a positive light and change perceptions so that outsiders feel safe, and insiders feel connected"*.

ASHLAND AVE CHALLENGES

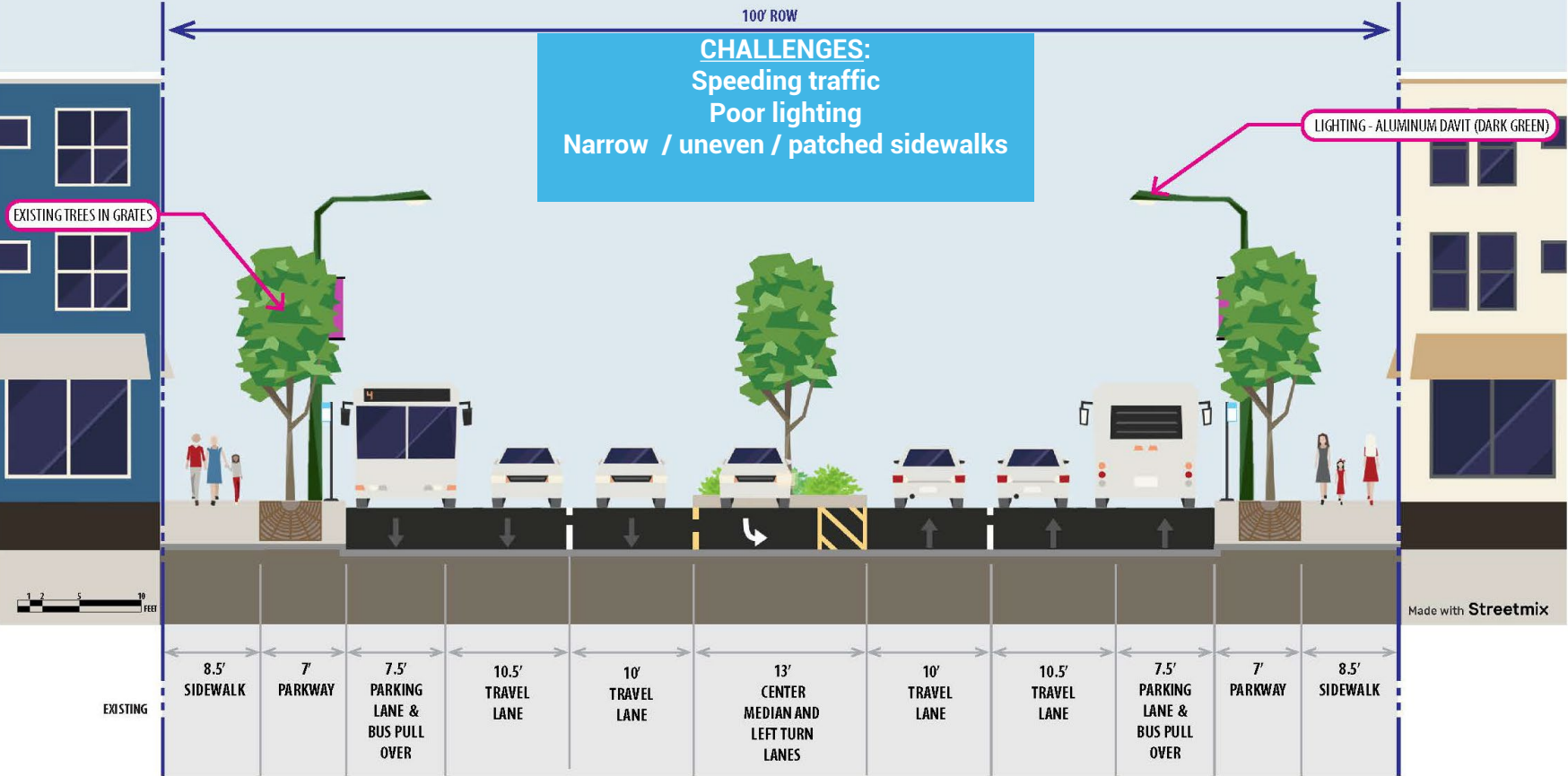
- Speeding traffic
- Poor lighting
- 47th / McDowell intersection traffic congestion
- Narrow / uneven / patched sidewalks

ASHLAND AVE RECOMMENDATIONS

- Add bus bulbs (*more predictable bus movements, calms traffic, shortens crosswalk lengths*)
- New lighting (*currently being installed*)
- Redesign intersection at 47th/McDowell/Ashland (*close McDowell slip lanes, widen sidewalks at south corners of 47th + Ashland*)
- Replace all sidewalks and parkways, including decorative pavers in-between trees



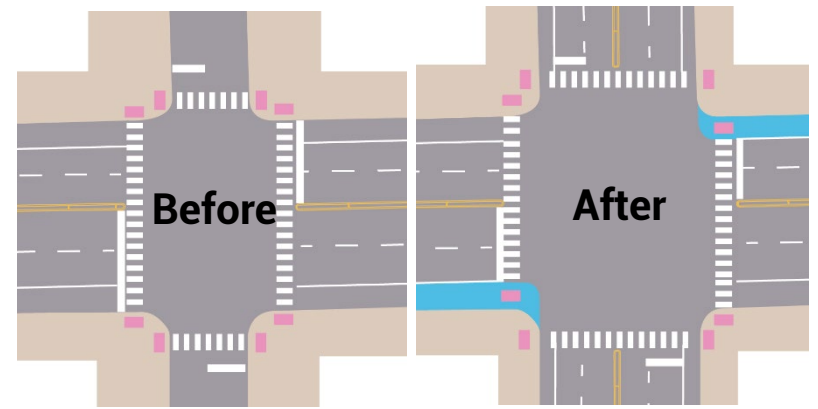
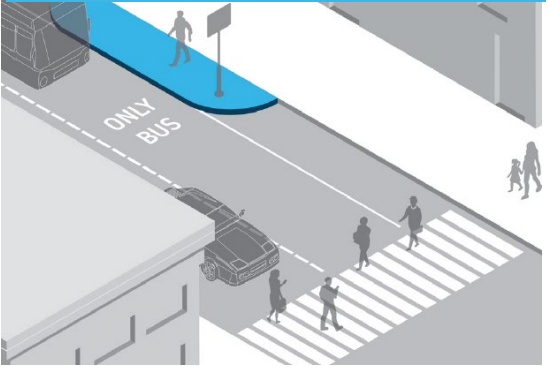
ASHLAND AVENUE – EXISTING SECTION



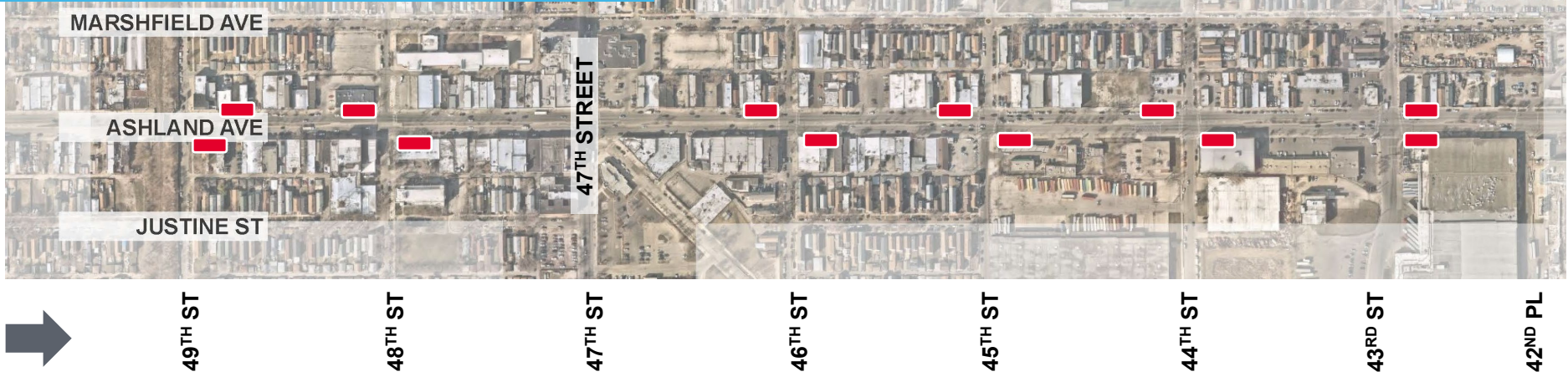
ASHLAND AVENUE EXISTING SECTION



SAMPLE BUS BULB LAYOUT

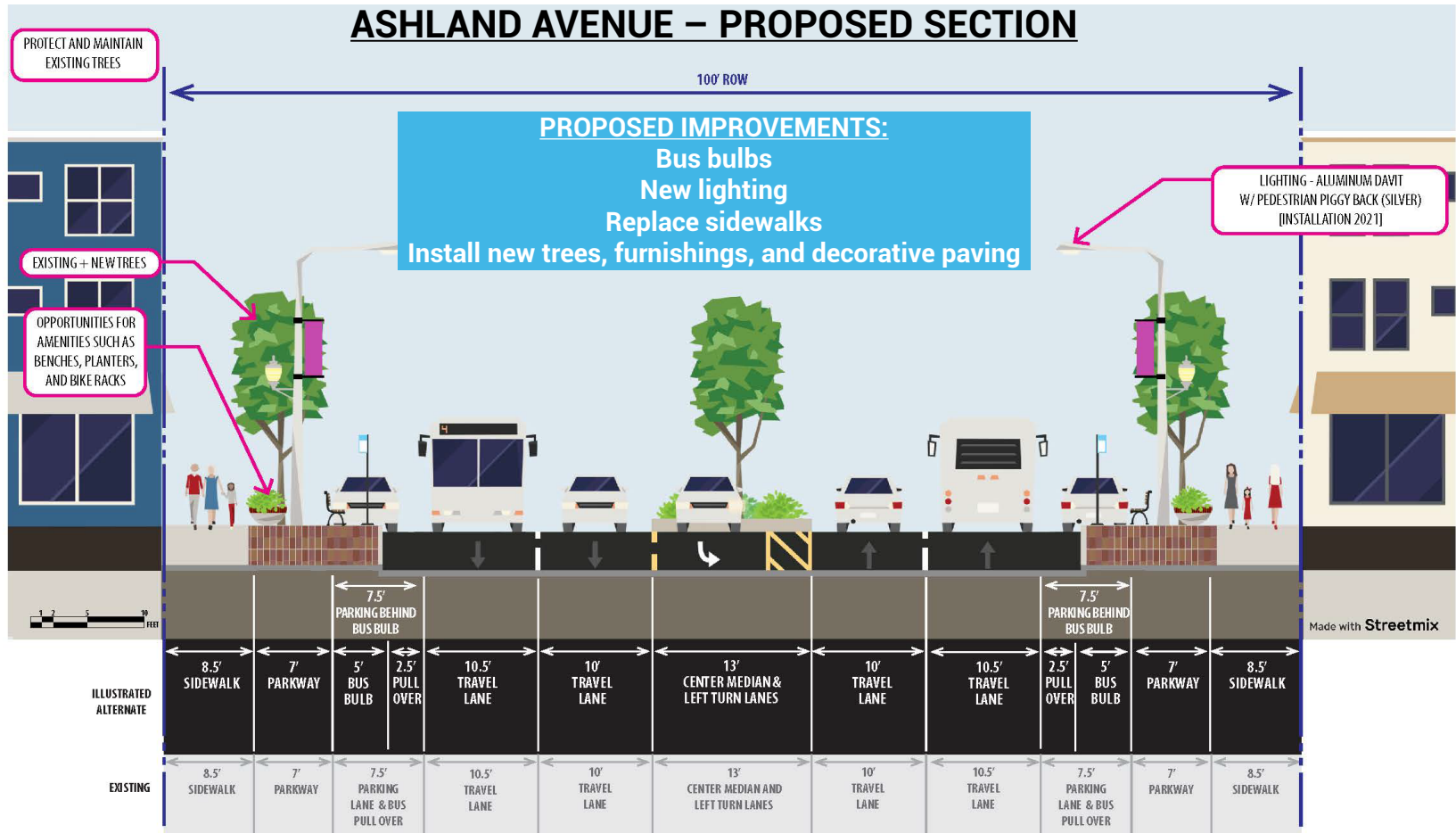


PROPOSED BUS BULB LOCATIONS



PROPOSED BUS BULBS

ASHLAND AVENUE – PROPOSED SECTION



47TH STREET CHALLENGES:

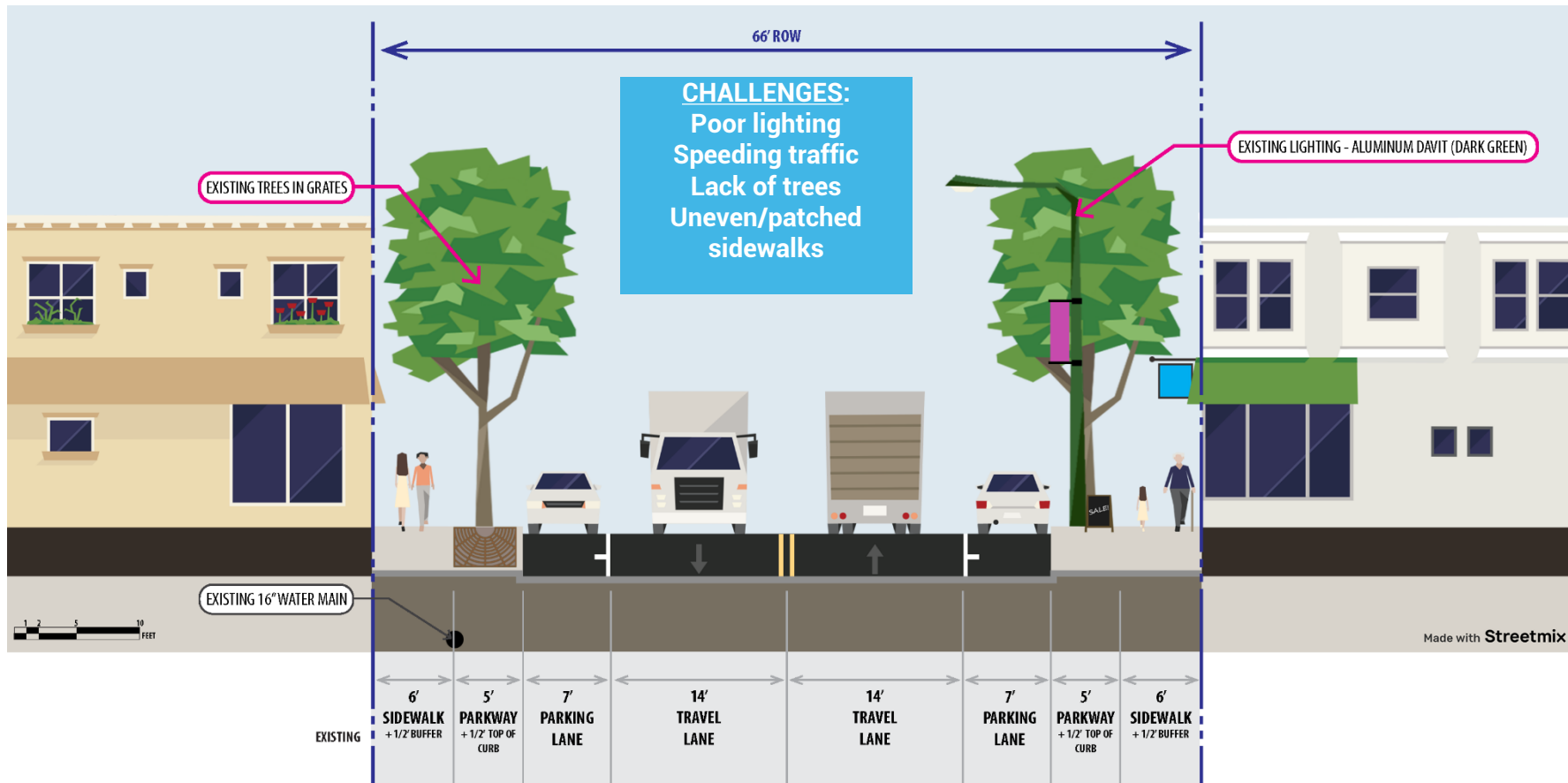
- Poor lighting, located on north side of street only due to underground utilities at south side of 47th
- Lots of truck traffic
- Lack of trees
- Uneven / patched sidewalks

47TH STREET RECOMMENDATIONS:

- New bright/consistent lighting, anticipated on both sides of the street
- Reduced lane widths (*more predictable vehicle movements, calms traffic*)
- Study feasibility to close some side-streets
- Enhance sidewalk bumpouts with plantings, furnishings, + shade
- Protect mature trees, install new trees on both sides of the street
- Replace all sidewalks and parkways, including decorative pavers in-between trees

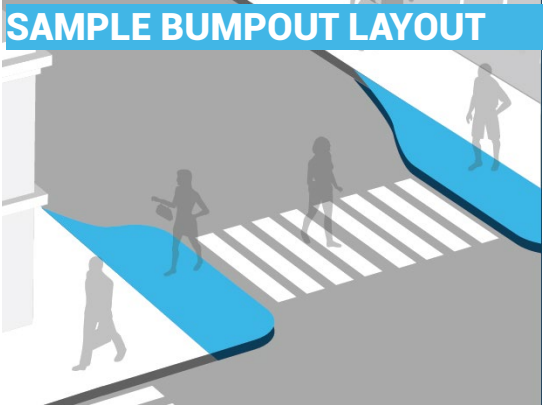


47TH STREET – EXISTING SECTION LOOKING WEST



47TH STREET EXISTING CONDITIONS

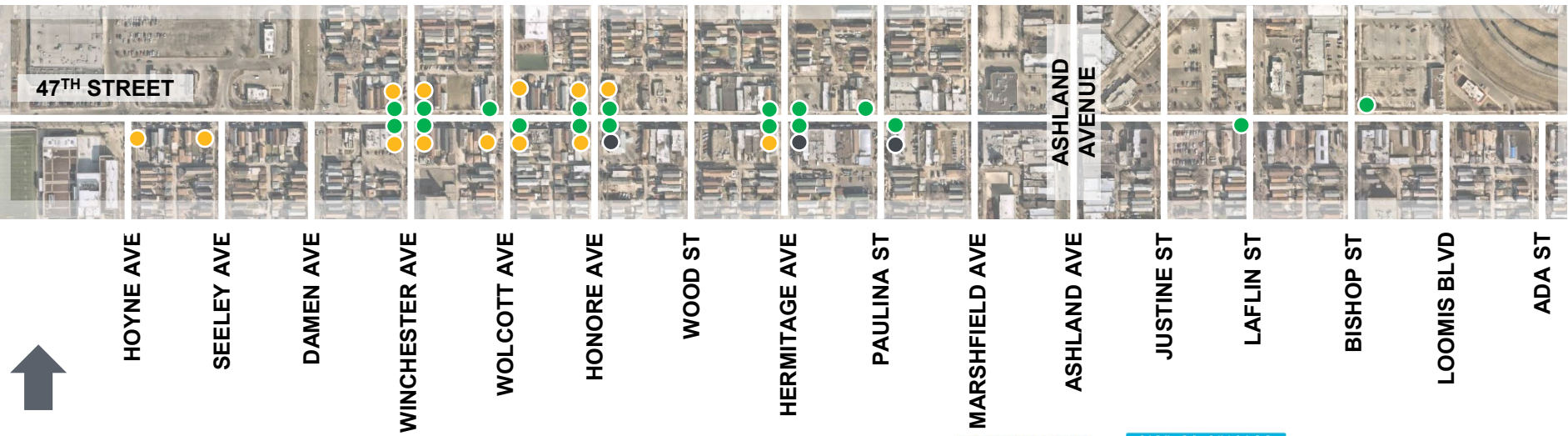




BUMPOUTS + AMENITIES

47 th Street Bumpouts with Landscape Amenities	●
Side Street Bumpouts with Landscape Amenities	●
Side Street Bumpouts with Landscape Amenities + Shade Structures	●

No impacts to on-street parking spaces are anticipated



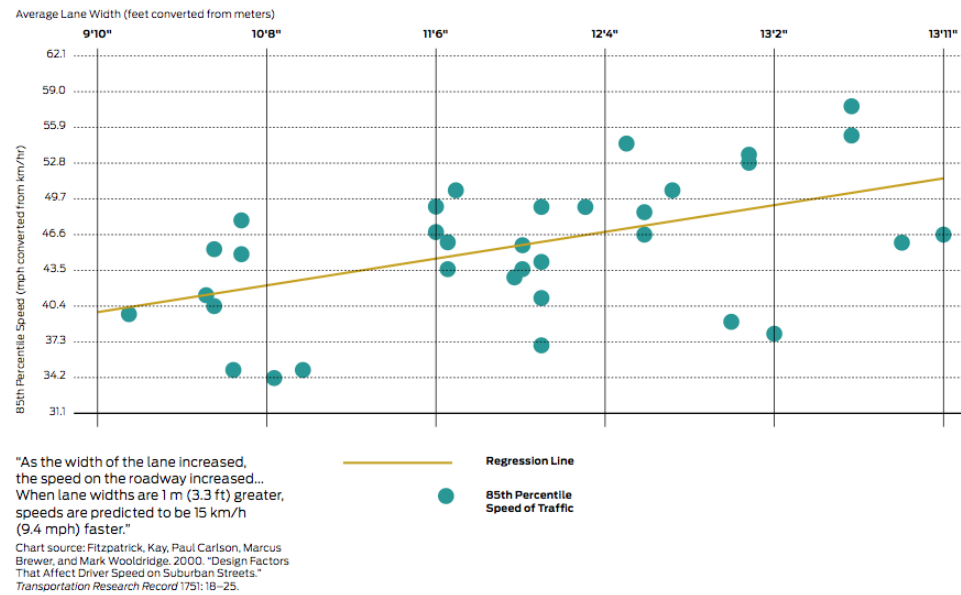
47th STREET PROPOSED BUMPOUTS



Wider travel lanes are correlated with higher vehicle speeds without limiting traffic flow.

- Per the National Association of City Transportation Officials (NACTO):**
- 10-foot lanes are appropriate on major streets in urban settings.
 - 11-foot lanes may be preferred where there are larger vehicles (such as transit or truck traffic) but should be restricted to the outside lane of a multi-lane roadway.
 - There is no measurable decrease in urban street capacity when through lane widths are narrowed from 12 feet to 10 feet.

Lane width (x-axis) vs. Speed (y-axis)



Source: National Association of City Transportation Officials (NACTO)

Narrowing travel lanes can reduce drivers' speed and increase safety for all roadway users and for pedestrians in particular.

Narrower travel lanes:

- Fewer opportunities for speeding and aggressive driving, thereby decreasing the instances and frequency of crashes.
- Decrease exposure and crossing distance for pedestrians at intersections.

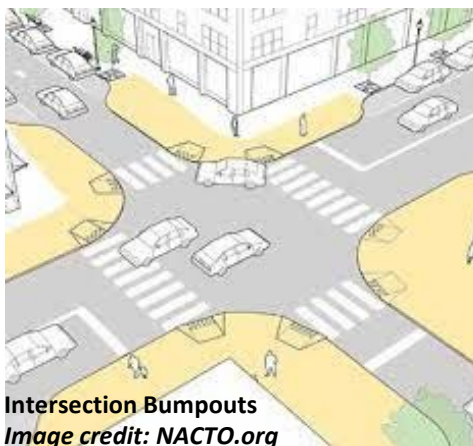
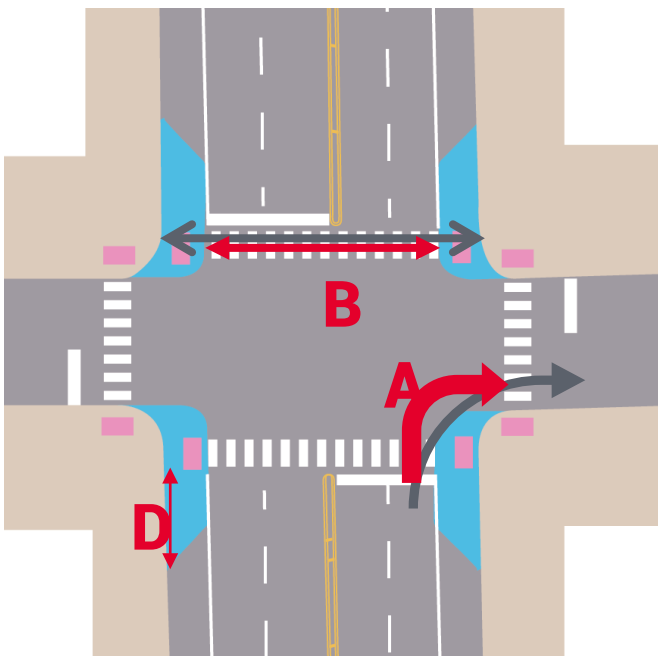
Slower travel speeds:

- Mitigate the potential severity of crashes.
- Give pedestrians greater opportunity to cross.

Higher speeds are correlated with higher crash severity.

hit by a car driving at...





Intersection bumpouts should be installed *whenever on-street parking is present* in order to increase visibility, reduce the crossing distance, provide extra queuing space, and support design enhancements (such as seating or landscaping).

Source: National Association of City Transportation Officials (NACTO)

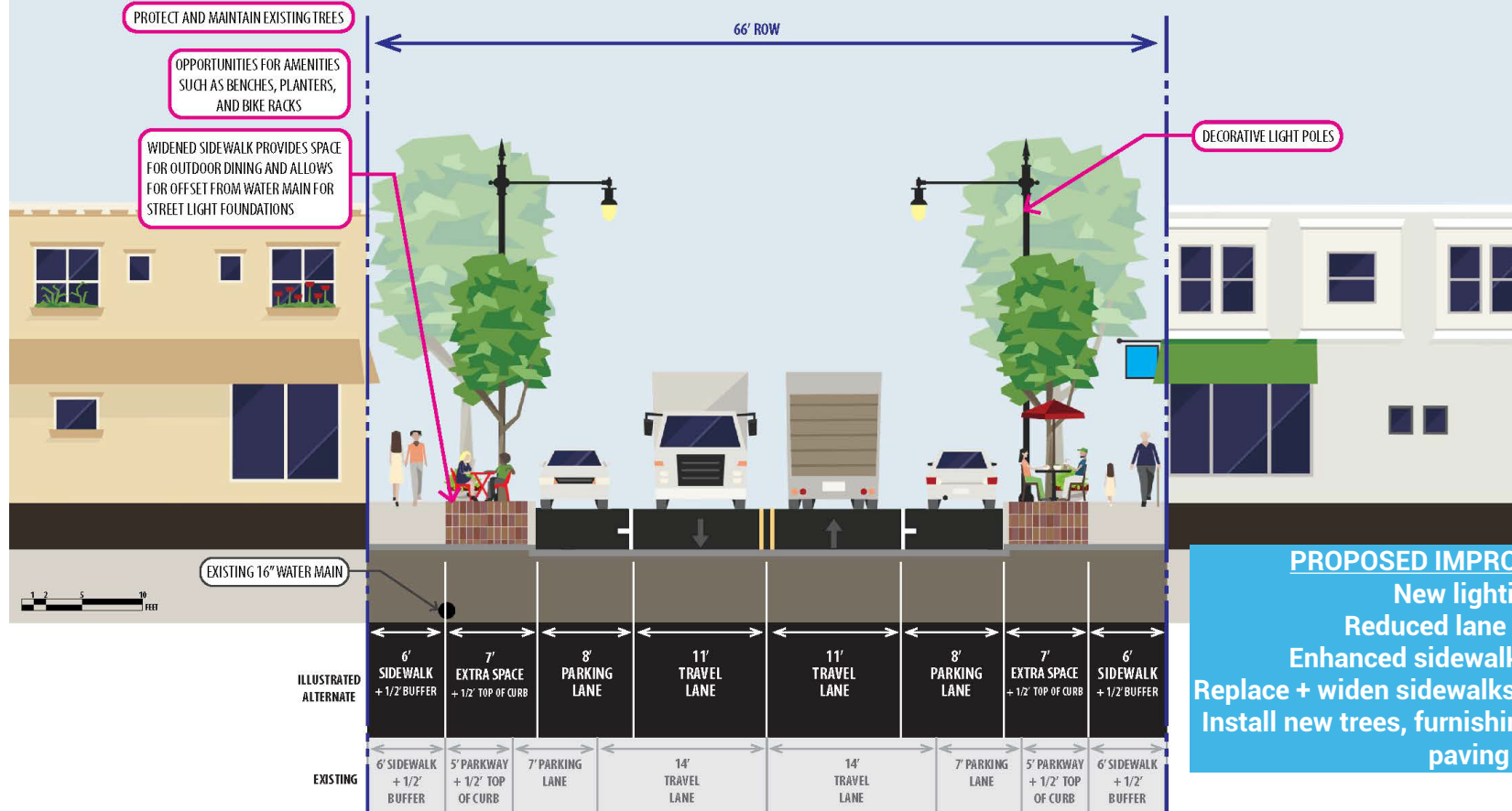
Bumpouts...

- Reduce the speed of turning vehicles
- Reduce the walking distance for pedestrians crossing the street
- Improve visibility between motorists and pedestrians
- Eliminate illegal parking in the corner clearance zone
- Allow for corner street furniture and other amenities that enhance the public realm

↔ Before
↔ After

47TH STREET – PROPOSED MID BLOCK SECTION

NORTH



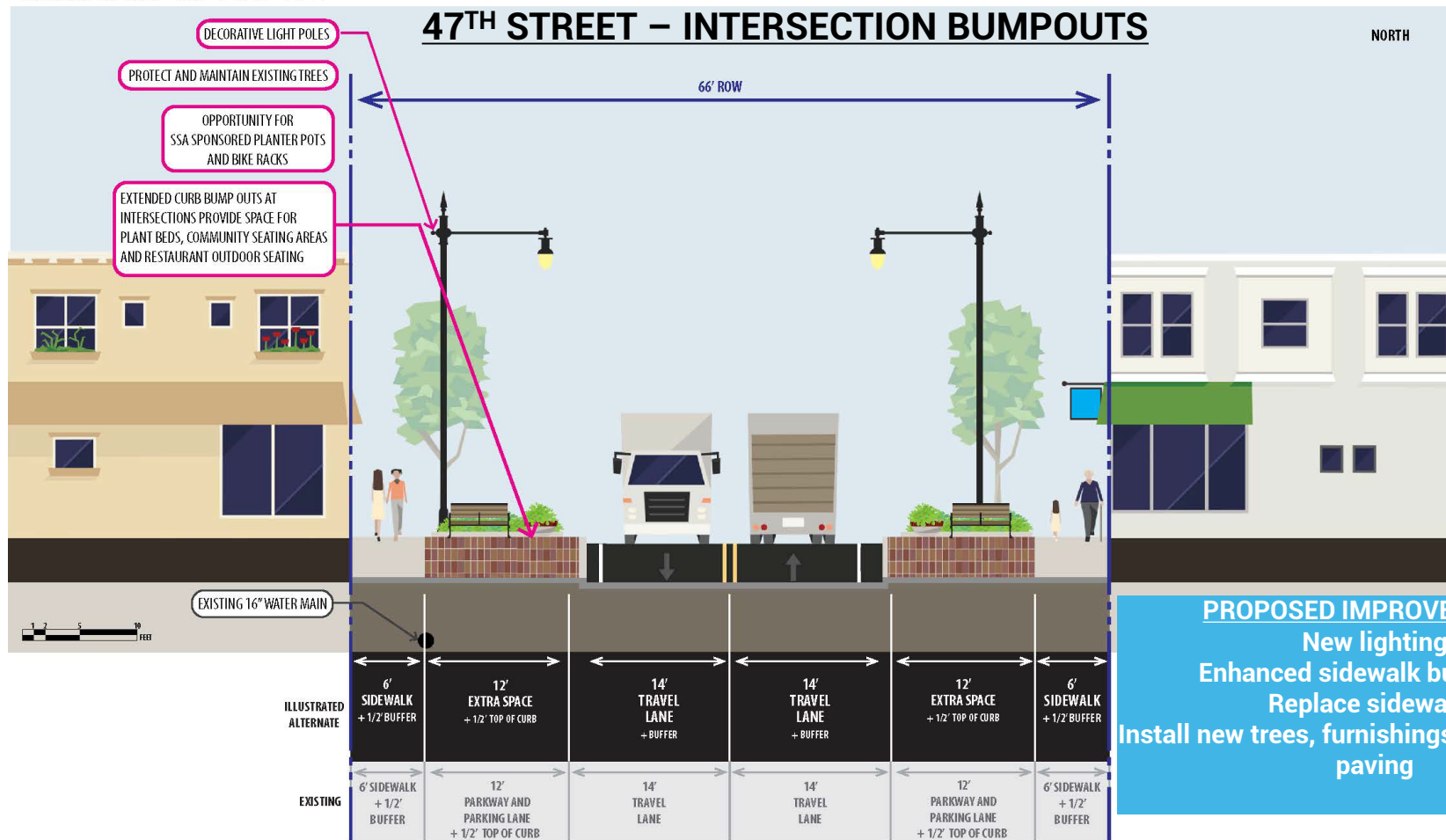
PROPOSED IMPROVEMENTS:
 New lighting
 Reduced lane widths
 Enhanced sidewalk bumpouts
 Replace + widen sidewalks at north and south
 Install new trees, furnishings and decorative paving

47TH STREET PROPOSED SECTION



47TH STREET – INTERSECTION BUMPOUTS

NORTH



PROPOSED IMPROVEMENTS:
 New lighting
 Enhanced sidewalk bump outs
 Replace sidewalks
 Install new trees, furnishings and decorative paving

47TH STREET PROPOSED SECTION



SIDE STREET BUMPOUT

66' ROW

PROPOSED IMPROVEMENTS:
New lighting
Enhanced sidewalk bumpouts
Replace sidewalks
Install new trees, furnishings and decorative paving

NEW + EXISTING TREES

SEATING AREA

EXTEND EXISTING BUMPOUTS

PARKWAY PLANTERS

RAISED CROSSWALK

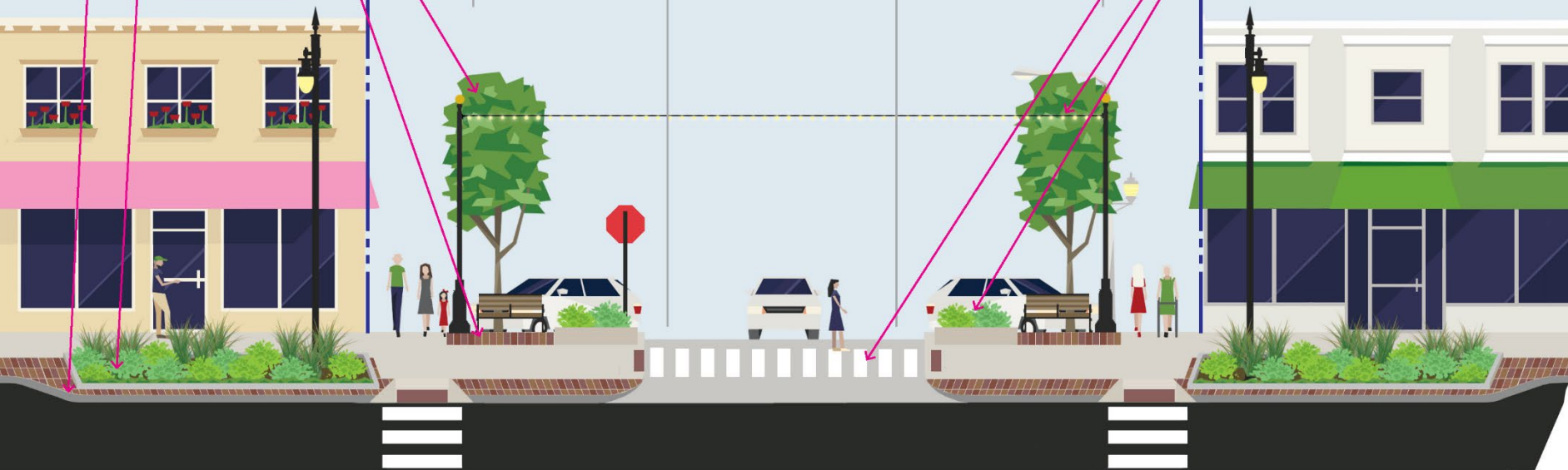
FESTOON LIGHTING

PLANT BEDS AND BENCHES

16'
PARKING
(60 DEGREE)

18'
TRAVEL LANE
(ONE-WAY)

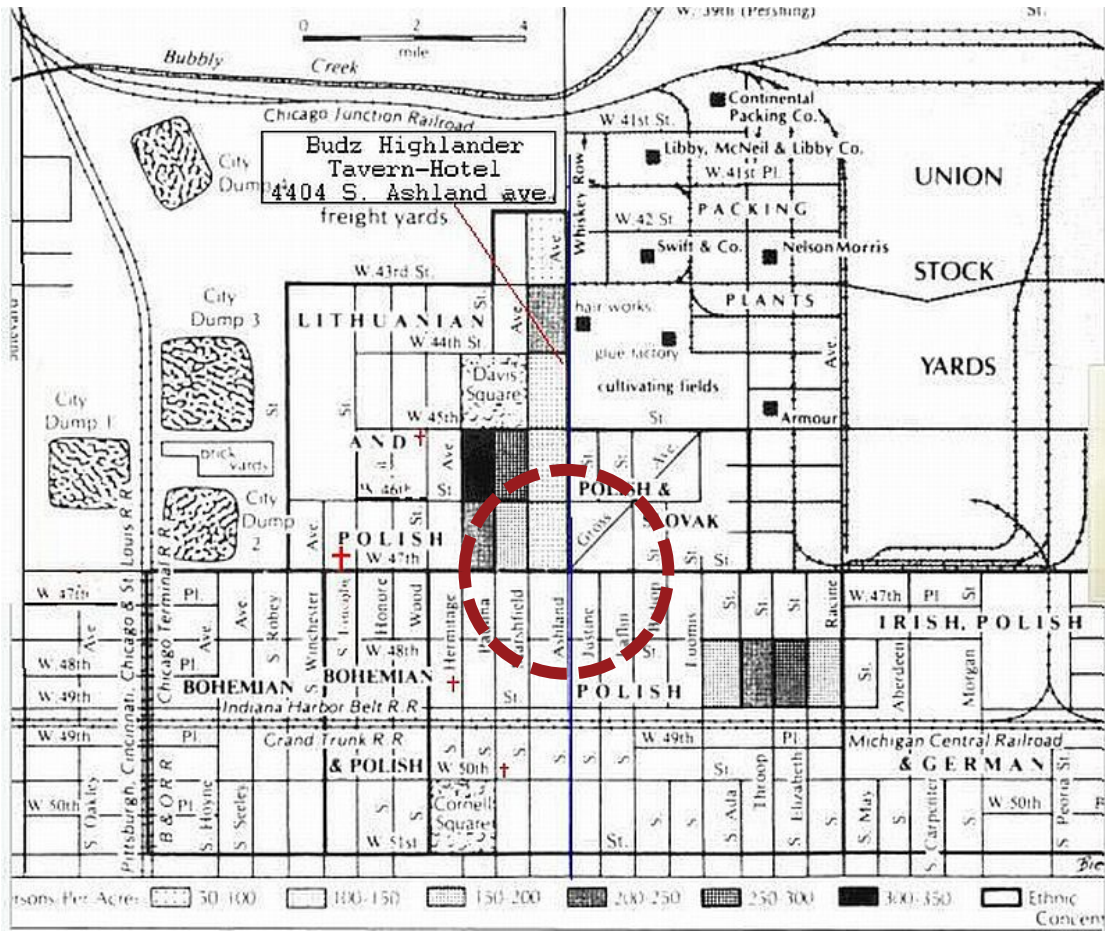
16'
PARKING
(60 DEGREE)



The Back of the Yards community was surrounded by the stockyards, railroad tracks + neighborhoods.

47th/Ashland historically was and currently remains the epicenter of commercial activity and a diverse community.

Design concepts reference traditional historic themes, modern community features, and a multi-cultural community full of color, flavor, + vibrancy.



"For generations, people from every walk of life and ethnic group have called Back of the Yards home. And for good reason: whether Slovak or Pole, Bohemian or Lithuanian, black, white or Latino, Back of the Yards has always represented the starting point for the American Dream.

From the stockyard to the back yard, the church pew to the avenue, this is the crossroads of America - an authentic place of community, culture and commerce - where each generation of residents has created a better life for the ones that follow."

-Back of the Yards Community Branding + Marketing Presentation, October 11, 2012, provided by Back of the Yards Neighborhood Council

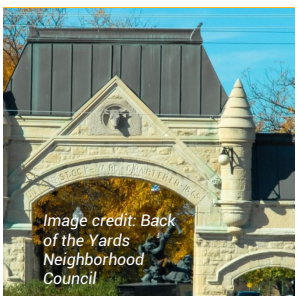


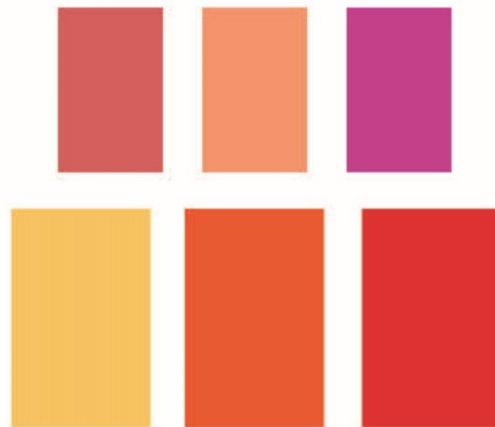
Image credit: Back of the Yards Neighborhood Council



Back of the Yards Community Branding + Marketing, (October 11, 2012) - provided by Back of the Yards Neighborhood Council



COLORS
CONSIDERED:
WARM
COLORS



COLORS
CONSIDERED:
COOL
COLORS

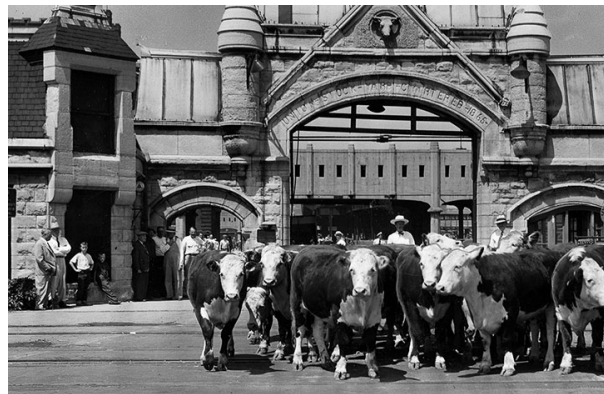


KEY TAKEAWAYS: CULTURE + IDENTITY

- 1** BOTY's mix of cultures contribute to a vibrant shopping district full of local businesses, community activity, and colorful murals. The streetscape design should reinforce this character.
- 2** Community members have expressed that **"We are missing our history"**. BOTY can express its rich history, such as the Union Stockyards, *The Jungle* (by Upton Sinclair), railroad history, Mary McDowell Settlement House, Church Towers, and Saul Alinsky.
- 3** BOTY has been recognized as a place where immigrant communities can achieve the American Dream and **"can make it"**. The streetscape should "put BOTY in a positive light and change perceptions so that outsiders feel safe, and insiders feel connected".



**THEME A:
BOTY HISTORIC COMMERCIAL
DISTRICT MEETS MODERN
NEIGHBORHOOD VIBRANCY**



**THEME B:
MEAT PACKING TO URBAN FARMING:
COMMUNITIES INFUSE CULTURE
AND FLAVOR INTO BOTY**

Entries and Archways

 The Archway refers to historic local architecture and Back of the Yards as a point of entry to Chicago and the American Dream.

Peoples Theater, image credit: CinemaTreasures.org



McDowell Settlement House, image credit: livinghistoryofillinois.com



Goldblatt's Department Store, image credit: Images of America

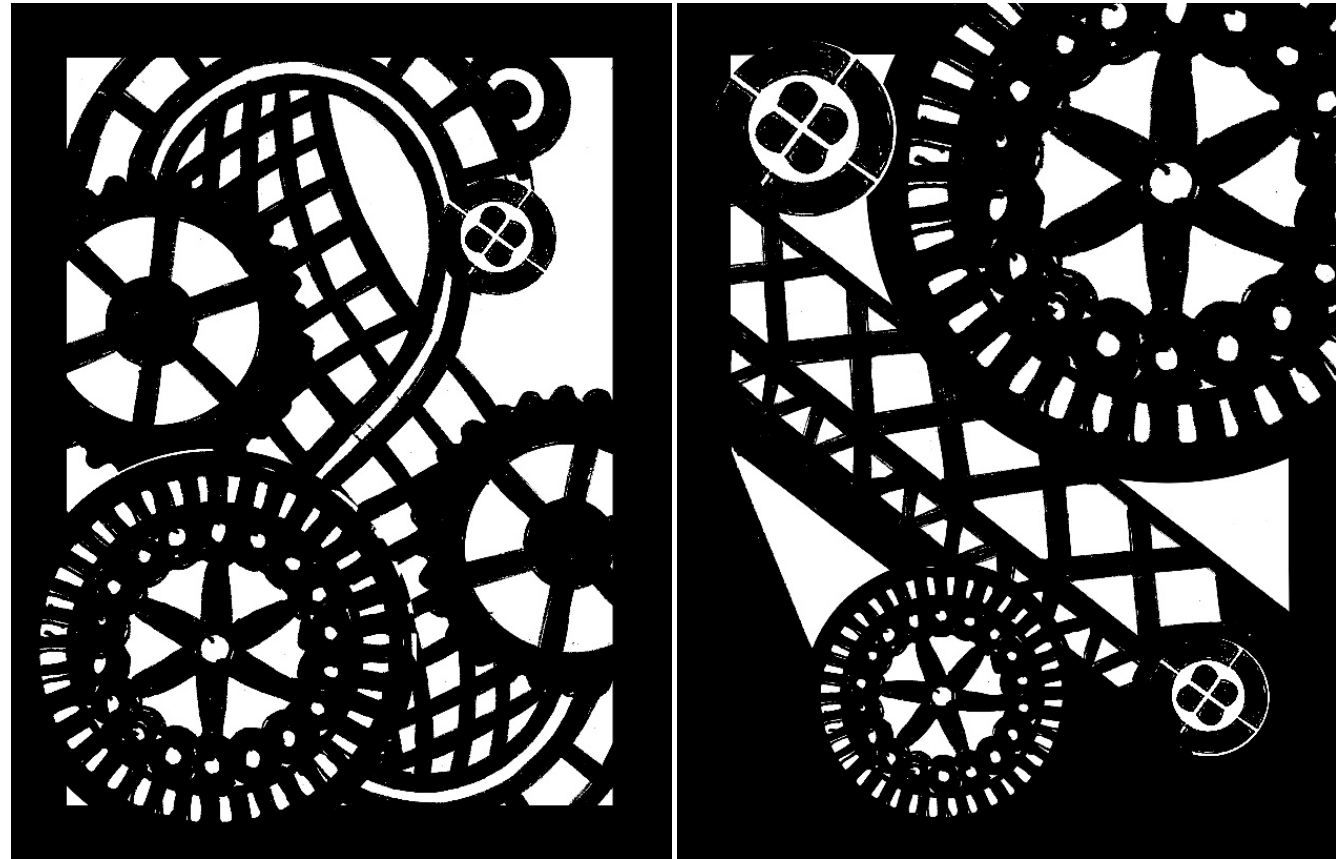


Union Stockyards Gate, image credit: Back of the Yards Neighborhood Council

Design Motifs

Design motifs represent Back of the Yards' historic structures and their role in supporting generations of community members who found their American Dream in this community.

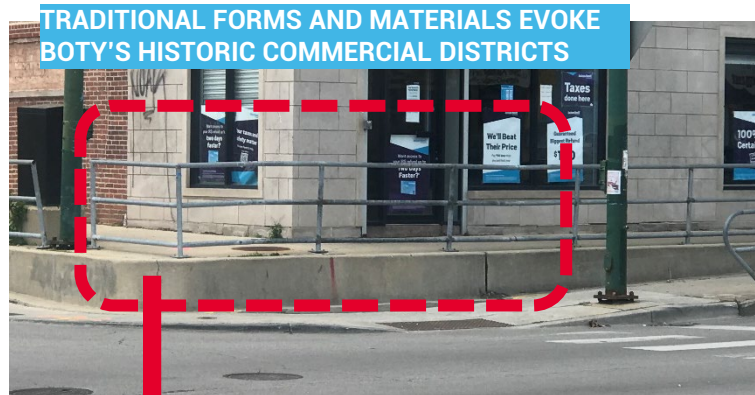
These design motifs are reflected in the light pole identifiers, community identifiers and railing designs.





METAL BENCH WITH WOOD SEAT + BACK

Landscape Forms "Plainwell" Bench; Cast aluminum frame with powdercoated finish, wood seat + back (*Wood options include tropical hardwood or locally sourced thermally treated Ash*) or approved equal



TRADITIONAL FORMS AND MATERIALS EVOKE BOTY'S HISTORIC COMMERCIAL DISTRICTS

PRECAST CONCRETE BENCH

Wausau "Old Town" Precast Concrete Bench or approved equal

CUSTOM RAILING
Occurs at tall curbed areas near Ashland / 49th Street



**SHADE
STRUCTURE**
ICON Shelter
FAS12X4OZ-
P3-30-100-35
Filtered Light
Panel
Cantilevered
Arbor in
“Wave” design,
with custom
laser cut and
curved panel
canopy or
equal



**TRADITIONAL FORMS AND MATERIALS EVOKE
BOTY'S HISTORIC COMMERCIAL DISTRICTS**

**FESTOON STRING LIGHTING ON
DECORATIVE POLES**





BORDER- CLARET CLAY PAVER

PLANT BED AND TREE PIT BORDER- GRANITE BLOCK PAVER

FIELD PAVER- PAWNEE BLACK PLANK CLAY PAVER



TRADITIONAL FORMS AND MATERIALS EVOKE BOTY'S HISTORIC COMMERCIAL DISTRICTS

Clay Brick Pavers, Herringbone Pattern, Belden Pawnee Black Plank Paver (Red/Brown/Black Mix), or equal



Clay Brick Pavers, Offset Sailor Course Border, Belden Claret Paver (Brown), or equal

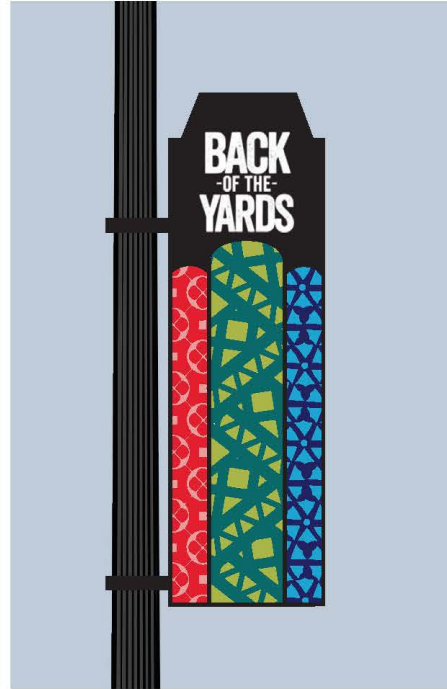


Granite Block Pavers, Soldier Course Plant Bed Border – Mortar Set, Color: Charcoal, locally sourced by Stockyards Brick and Timber or equal





OPTION 1



OPTION 2

THEME A: COMMUNITY IDENTIFIERS - LIGHT POLES





COOL COLOR PALETTE



WARM COLOR PALETTE

MINOR GATEWAY COMMUNITY IDENTIFIERS



Ashland Ave / 45th Street

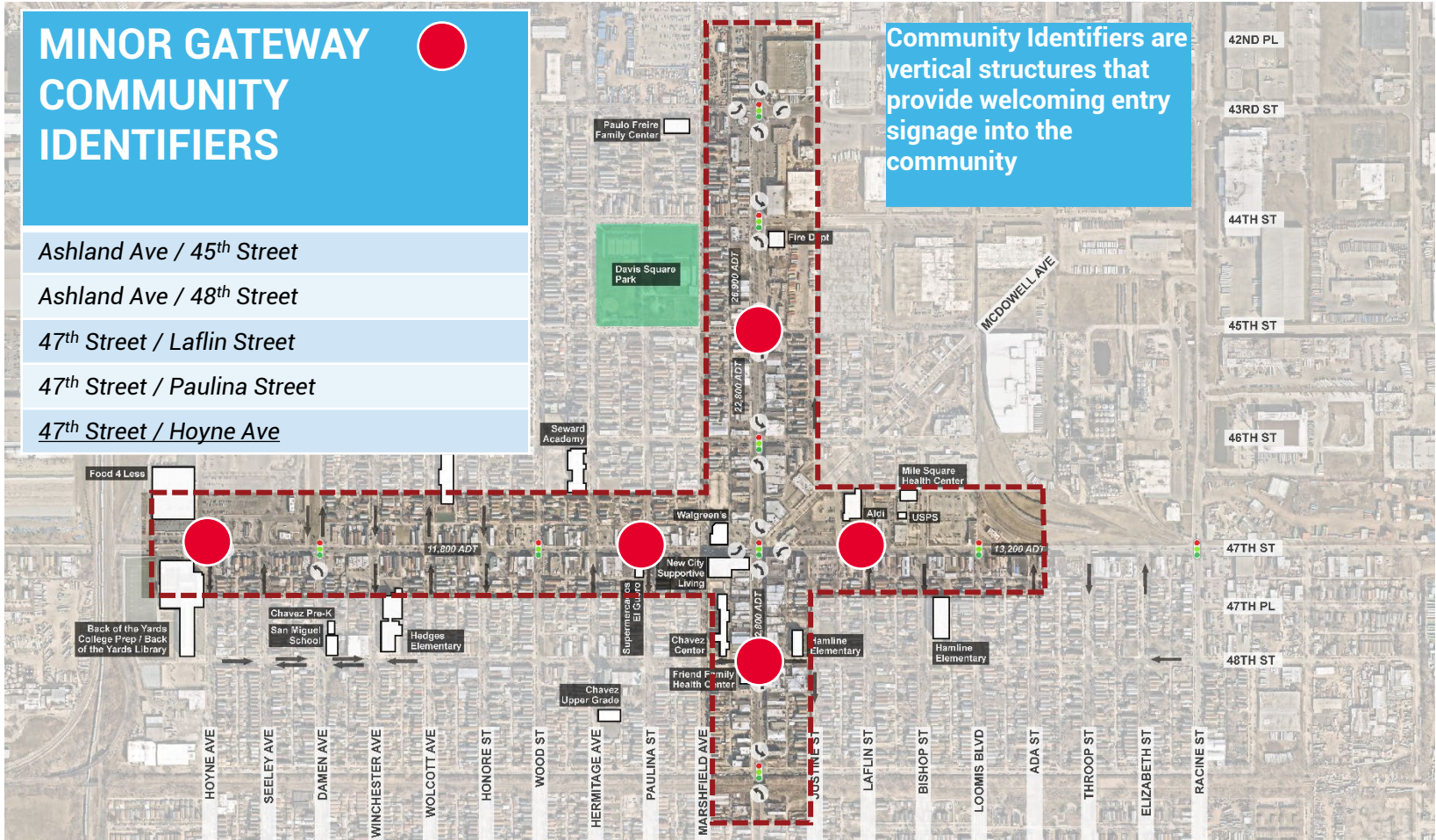
Ashland Ave / 48th Street

47th Street / Laflin Street

47th Street / Paulina Street

47th Street / Hoyne Ave

Community Identifiers are vertical structures that provide welcoming entry signage into the community



**OPTION 1:
MASONRY PIER
WITH ARCH PANELS**



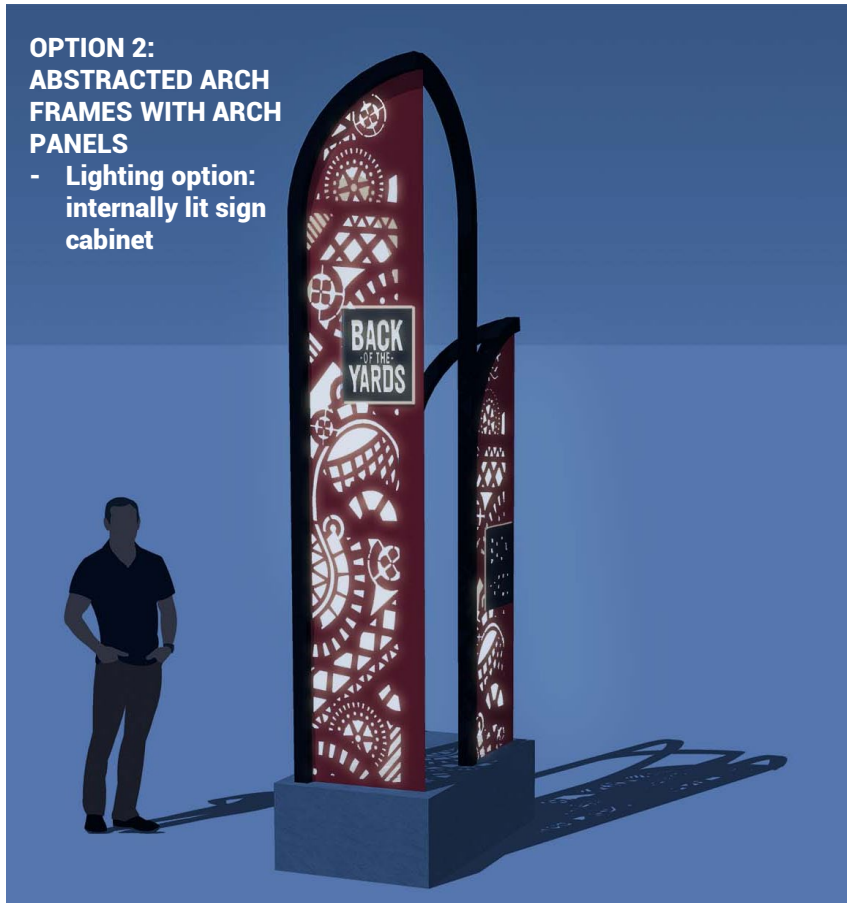
**OPTION 2:
ABSTRACTED ARCH FRAMES
WITH ARCH PANELS**



**OPTION 1:
MASONRY PIER
WITH ARCH PANELS**
- Lighting option:
backlit sign panels



**OPTION 2:
ABSTRACTED ARCH
FRAMES WITH ARCH
PANELS**
- Lighting option:
internally lit sign
cabinet



Highest ranked improvements to support businesses along 47th Street:

- Outdoor seating + dining

- *Online Survey Input*



Typical side street bumpout with landscape amenities

HERMITAGE AVENUE

47TH STREET SIDEWALK

Side street bumpout with landscape amenities and shade structures proposed at: Honore Street, Hermitage Ave, Paulina St

THEME A: SIDE STREET BUMPOUT





Typical 47th Street bumpout with landscape amenities

47TH STREET

Minor Gateway Community Identifier Option 1 Limestone Pier

THEME A: 47TH STREET BUMPOUT





Minor Gateway Community Identifier Option 2 Abstracted Arches

Side street bumpout with landscape amenities and shade structures proposed at:
Honore Street
Hermitage Ave
Paulina St

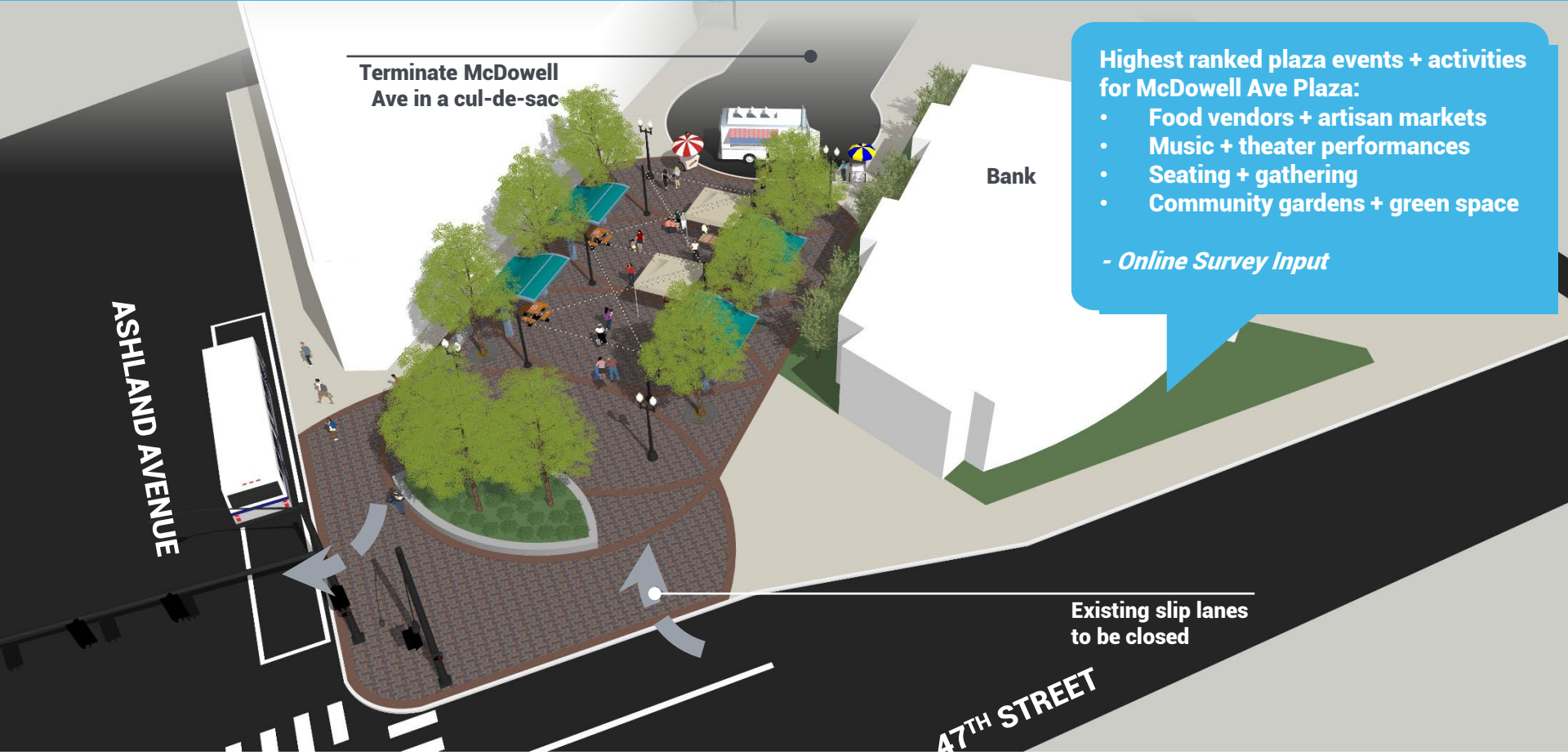
47TH STREET

HERMITAGE AVENUE

Typical 47th Street bumpout with landscape amenities

THEME A: SIDE STREET BUMPOUT





Terminate McDowell Ave in a cul-de-sac

ASHLAND AVENUE

Bank

Highest ranked plaza events + activities for McDowell Ave Plaza:

- Food vendors + artisan markets
- Music + theater performances
- Seating + gathering
- Community gardens + green space

- Online Survey Input

Existing slip lanes to be closed

47TH STREET

THEME A: McDOWELL PLAZA





THEME A: McDOWELL PLAZA





THEME A: McDOWELL PLAZA





**THEME A:
BOTY HISTORIC COMMERCIAL
DISTRICT MEETS MODERN
NEIGHBORHOOD VIBRANCY**



**THEME B:
MEAT PACKING TO URBAN
FARMING: COMMUNITIES
INFUSE CULTURE AND FLAVOR
INTO BOTY**

Meat packing to urban farming: communities infuse culture and flavor into BOTY

Local agriculture continues to feed Back of the Yards. From innovative food production to authentic meals, food and flavors sustain the neighborhood.



Union Stockyards, image credit: Chicago Magazine



Vertical farming at The Plant, image credit: Chicago Tribune

Design Motifs

Motifs refer to locally produced agriculture, including the foods and flowers that infuse flavor into Back of Yards diverse cultures.

These design motifs are reflected in the light pole identifiers, community identifiers and railing designs.





METAL BENCH WITH SEAT + BACK

Forms and Surfaces "Trio" Bench; Cast aluminum frame with powdercoated finish; Seat + back options include wood or aluminum, or equal



PRECAST CONCRETE BENCH

Landscape Forms "Hebi" Precast Concrete Seatwall Bench, or equal



CURVILINEAR + NATURE BASED FORMS
REFERENCE BOTY'S URBAN FARMS + FLAVORS

CUSTOM RAILING
Occurs at tall curbed areas near Ashland / 49th Street





SHADE STRUCTURE

MMCITE Shelter System "Pin"; Galvanized steel frame, powder coated finish, frosted or color safety glass ceiling; options to include green roof, integral lighting, and USB charging , or equal

CURVILINEAR + NATURE BASED FORMS
REFERENCE BOTY'S URBAN FARMS + FLAVORS





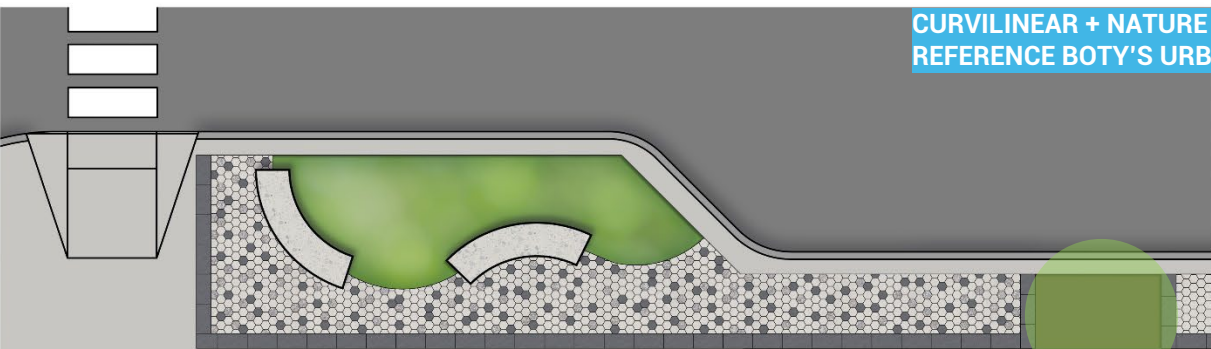
**TENSILE SHADE
STRUCTURE ON
DECORATIVE
POLES**
Ronstan Tensile
Architecture, or
equal

**CURVILINEAR + NATURE BASED FORMS
REFERENCE BOTY'S URBAN FARMS + FLAVORS**

**PENDANT LIGHTING INTEGRATED
WITH TENSILE SHADE STRUCTURE**



CURVILINEAR + NATURE BASED FORMS REFERENCE BOTY'S URBAN FARMS + FLAVORS



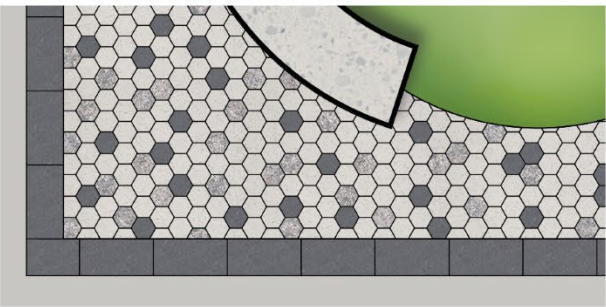
Precast Concrete Paver, Unilock Finish: Granito, color: Sabia, (paver field mix 20%), or equal



Precast Concrete Paver, Unilock, Finish: Umbriano, color: Grenada White (paver field mix 60%), or equal



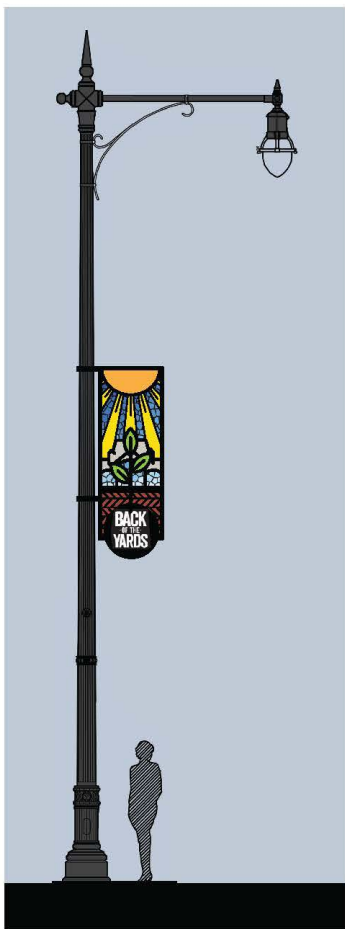
Precast Concrete Paver, Unilock, Finish: Smooth Premier, Color: Dark Charcoal (Border + Paver Field Mix 20%), or equal



HEX
20 CM X 20 CM X 7 CM
7.875" X 7.875" X 2.75"



12"X24"
30 CM X 60 CM X 7 CM
11.75" X 23.625" X 2.75"



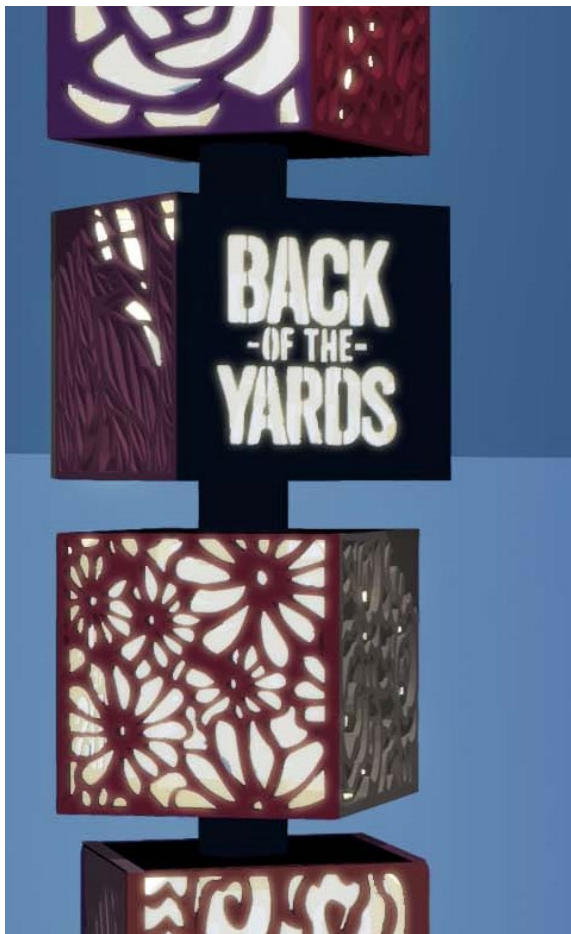
OPTION 1



OPTION 2



"TOTEM" FEATURE
- Metal boxes with colorful design motif patterns.



- "TOTEM" FEATURE**
- Metal boxes with colorful design motif patterns.
 - Lighting option: internally lit metal boxes



Side street bumpout with landscape amenities and shade structures proposed at:
Honore Street
Hermitage Ave
Paulina St

Typical 47th Street bumpout with landscape amenities

Typical side street bumpout with landscape amenities

Highest ranked improvements to support businesses along 47th Street:

- Outdoor seating + dining



THEME B: SIDE STREET BUMPOUTS





THEME B: SIDE STREET BUMPOUTS



Terminate McDowell Ave in a cul-de-sac

Bank

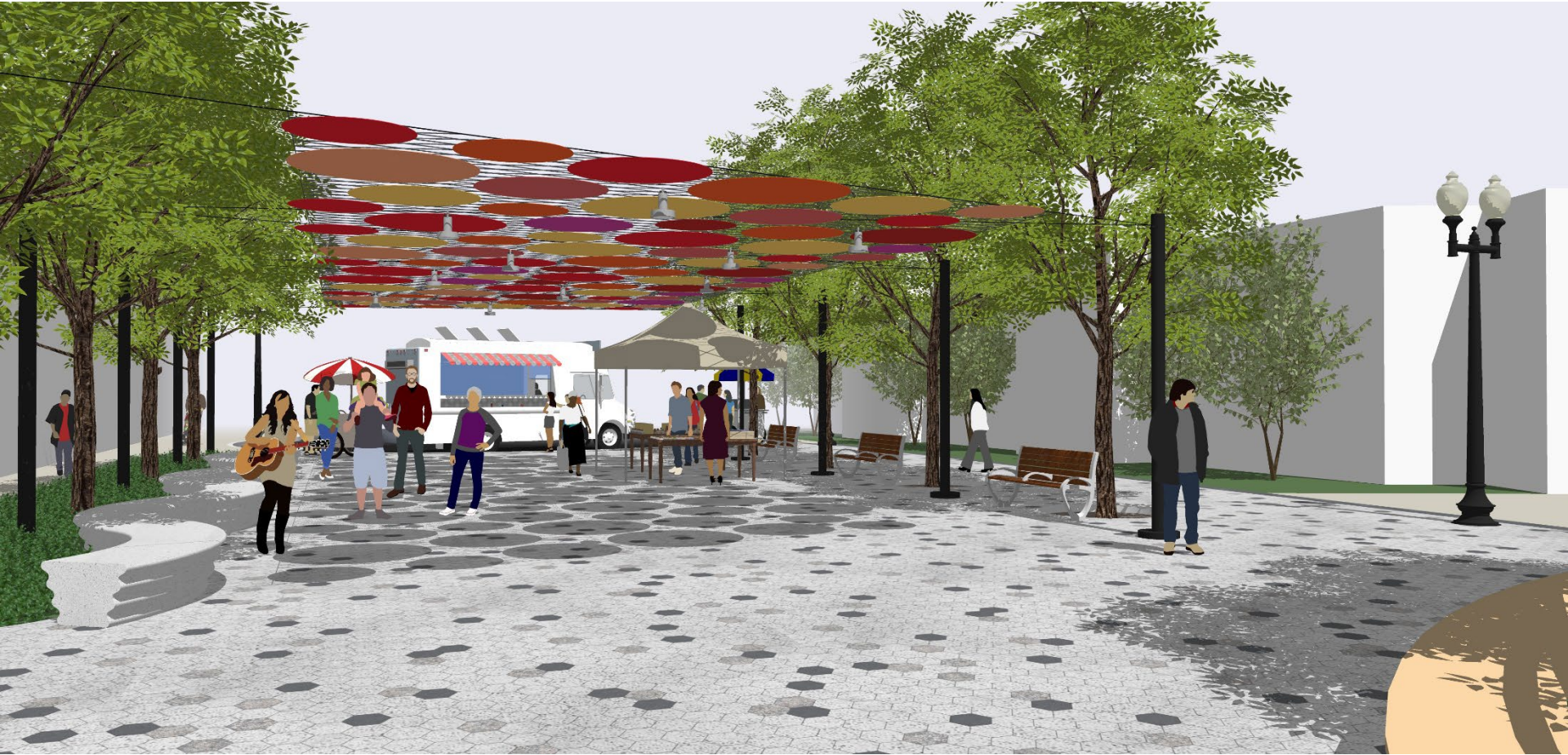
- Highest ranked plaza events + activities for McDowell Ave Plaza:
- Food vendors + artisan markets
 - Music + theater performances
 - Seating + gathering
 - Community gardens + green space

Existing slip lanes to be closed



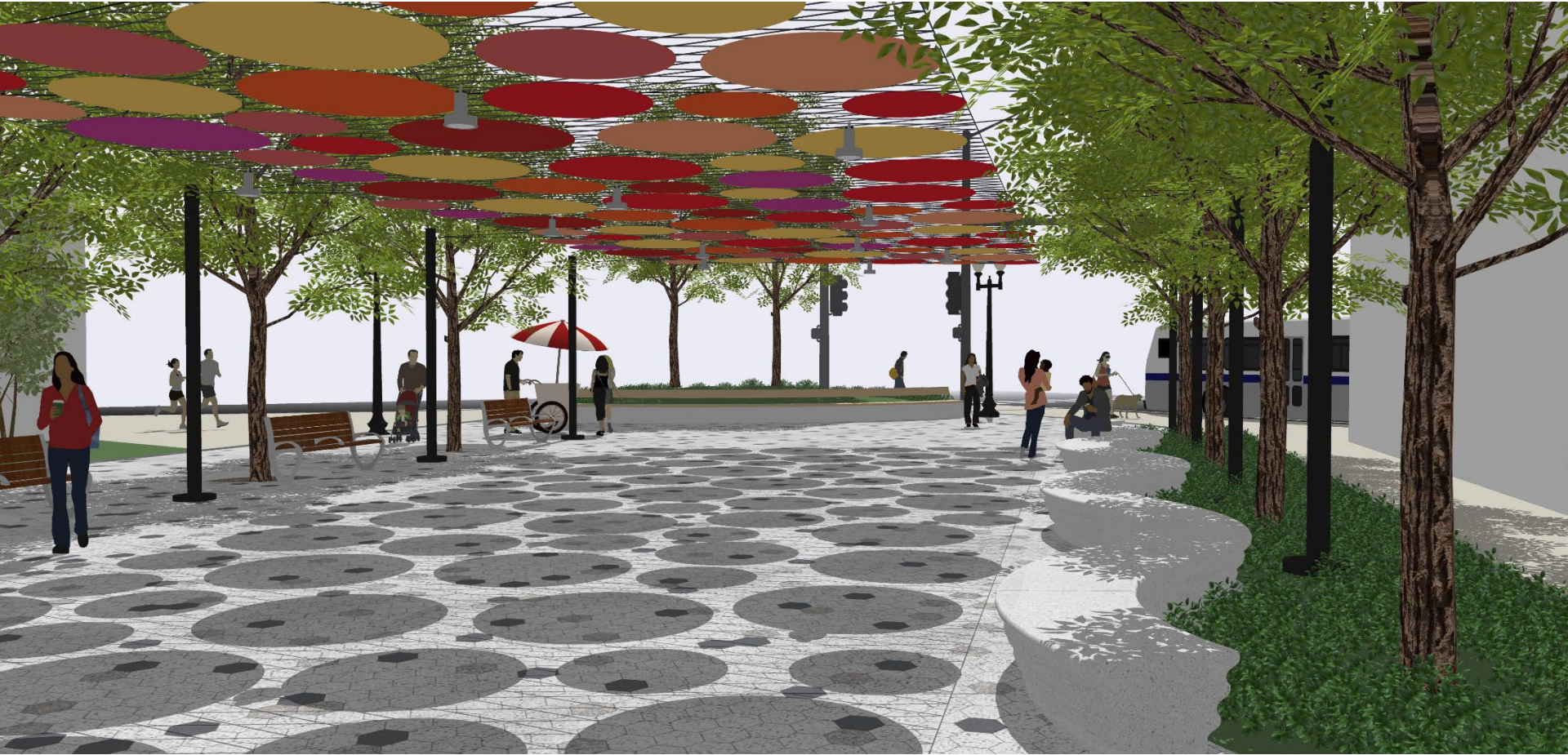
THEME B: McDOWELL PLAZA





THEME B: McDOWELL PLAZA





THEME B: McDOWELL PLAZA



VISIONING ACTIVITY

Using your smart phone, please log on to:

MENTI.COM

INPUT CODE #8567 3586

(PLEASE KEEP YOUR COMPUTER SCREEN OPEN)

NEXT STEPS

- 1. Issue Online Survey #2**
- 2. Additional Focus Groups**
- 3. Concept Refinement**
- 4. Next Public Meeting – Spring 2022**

Q+A

Please use the Q+A function to enter your questions

We appreciate **YOU** taking the time to join us!

VISIT THE WEBSITE:

<https://chicagocompletestreets.org/portfolio/invest-south-west-back-of-the-yards-47th-street/>

