

ISW GREATER ENGLEWOOD

63RD STREET AND HALSTED STREET CORRIDOR IMPROVEMENTS

August 18, 2021 | Community Meeting



- 01** Introductions
- 02** Project Overview
- 03** Project Scope & Schedule
- 04** Streetscape Components
- 05** Initial Observations
- 06** Corridor Character
- 07** Next Steps + Q&A



We don't want to **miss** anything!

Please be aware that this presentation will be **recorded** for note-taking and recordkeeping purposes.

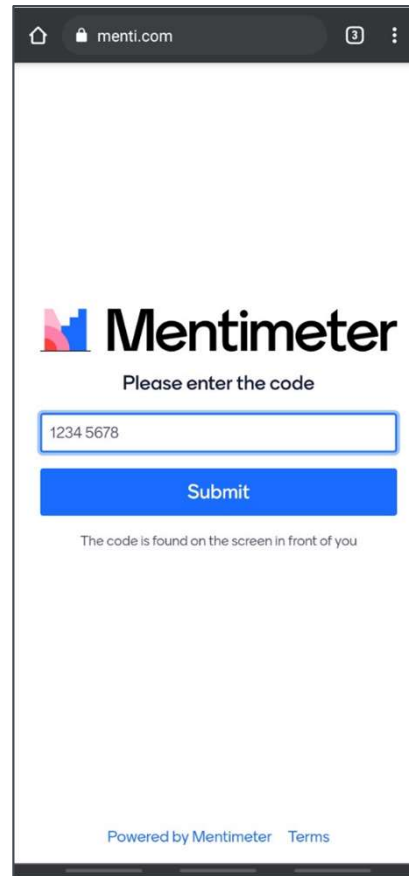
Participation in this presentation acknowledges you **consent** to be recorded.

Everyone working together!



- 01** Please **MUTE** yourself during the presentation and when you are not speaking
- 02** Please state your name when speaking
- 03** Please use the **Q&A FUNCTION** for any questions outside the designated Q&A period
- 04** All questions and ideas are valid
- 05** Respect all other participant opinions and perspectives

- 01 Go to Menti.com
- 02 Enter 8323 3627
- 03 Answer questions
- 04 See Results



16th Ward

- Alderman Stephanie Coleman

20th Ward

- Alderman Jeanette Taylor

Chicago Department of Transportation (CDOT)

- Lubka Benak, Program Director
- Camille Applewhite, Project Manager

Jacobs

Prime Engineer

- *John Wirtz*

Site Design Group (MBE)

Landscape Architecture

- *Jessie King*

Blue Daring (M/WBE)

Public Outreach Support

- *Veronica Cruz*

CKL (M/WBE)

Sub Engineering

- *Mae Whiteside*

DB Sterlin (MBE)

Survey Data

Fish Transportation Group (WBE)

Traffic Data

Wang Engineering (MBE)

Geotechnical

Local Artist

Jerrold "Just Flo" Anderson

AWARE

of project purpose and scope

OBTAIN

input on corridor features and use

SUPPORT

with notifying the community

PROJECT OVERVIEW

8

Supports the Invest South/West initiative to re-activate neighborhood cores that have historically served as focal points for pedestrian activity, shopping, services, transportation, public spaces and quality-of-life amenities for residents.

Part of Chicago Works: Mayor Lori E. Lightfoot's five-year capital plan that will Invest in Communities Through Infrastructure.

The streetscapes consist of infrastructure, pedestrian safety, and placemaking improvements with the goal of creating a unified, safe, walkable, and attractive commercial destination. The streetscape projects are comprehensive and include ROW improvements from building face to building face.

The Project Includes:

- Public Outreach
- Placemaking and urban design strategy
- Concept design & engineering
- Detailed design & engineering
- Construction of the corridor



PROJECT PURPOSE AND SCOPE



PROJECT OVERVIEW

9

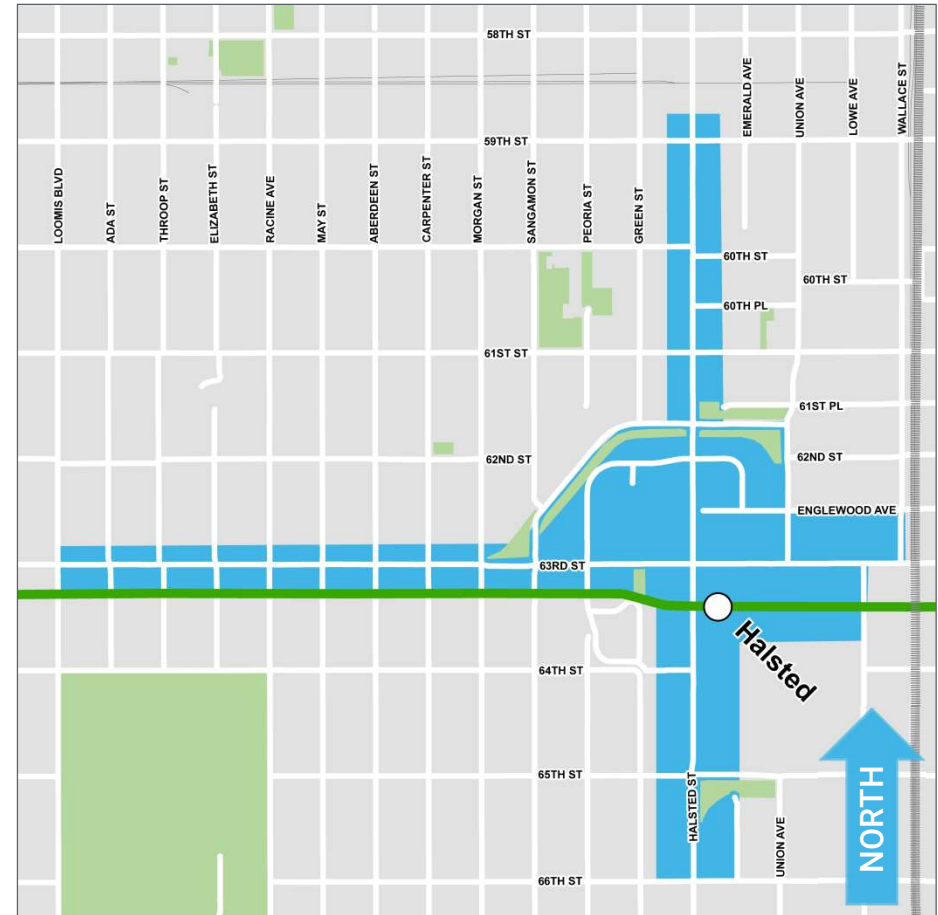
ISW Greater Englewood

63rd St, Loomis to Wallace and Halsted,
59th Street to 66th Street

Alderwoman Coleman, Ward 16 / Alderwoman Taylor, Ward 20

Scope

- Roadway geometry and intersection improvements
- Full width resurfacing
- Drainage improvements
- Sidewalk, curb, and gutter
- Curb extensions
- ADA ramps and crosswalks
- Continuation of Street lighting
- Traffic signal upgrades
- Improved pavement markings and signage
- Potential paver parkways
- Side street improvements to the alleys as needed
- Site furniture and potential seating areas
- Light pole identifiers
- Gateway identifier
- Tree planting and potential landscaping
- Renovation of Englewood Plaza



STREETSCAPE SCOPE



Your vital input will help the project team meet the following objectives:

- Develop a shared vision that reflects the unique community area and stakeholder goals.
- Foster an environment for future economic growth and public amenities.
- Support INVEST South/West initiative to reactive neighborhood cores.
- Incorporate public feedback within recommended improvements.

PROJECT SCOPE & SCHEDULE

WE ARE
HERE



Spring 2021

- Project Start-Up
- ISW Roundtable Meeting #1
- Existing Conditions Analysis

Summer 2021

- ISW Roundtable Meeting #2
- Community Meeting #1
- Project Survey #1
- Stakeholder Interviews
- Preliminary Concepts

Fall 2021

- Community Meeting #2
- Project Survey #2
- Preferred Concept

Winter/Spring 2022

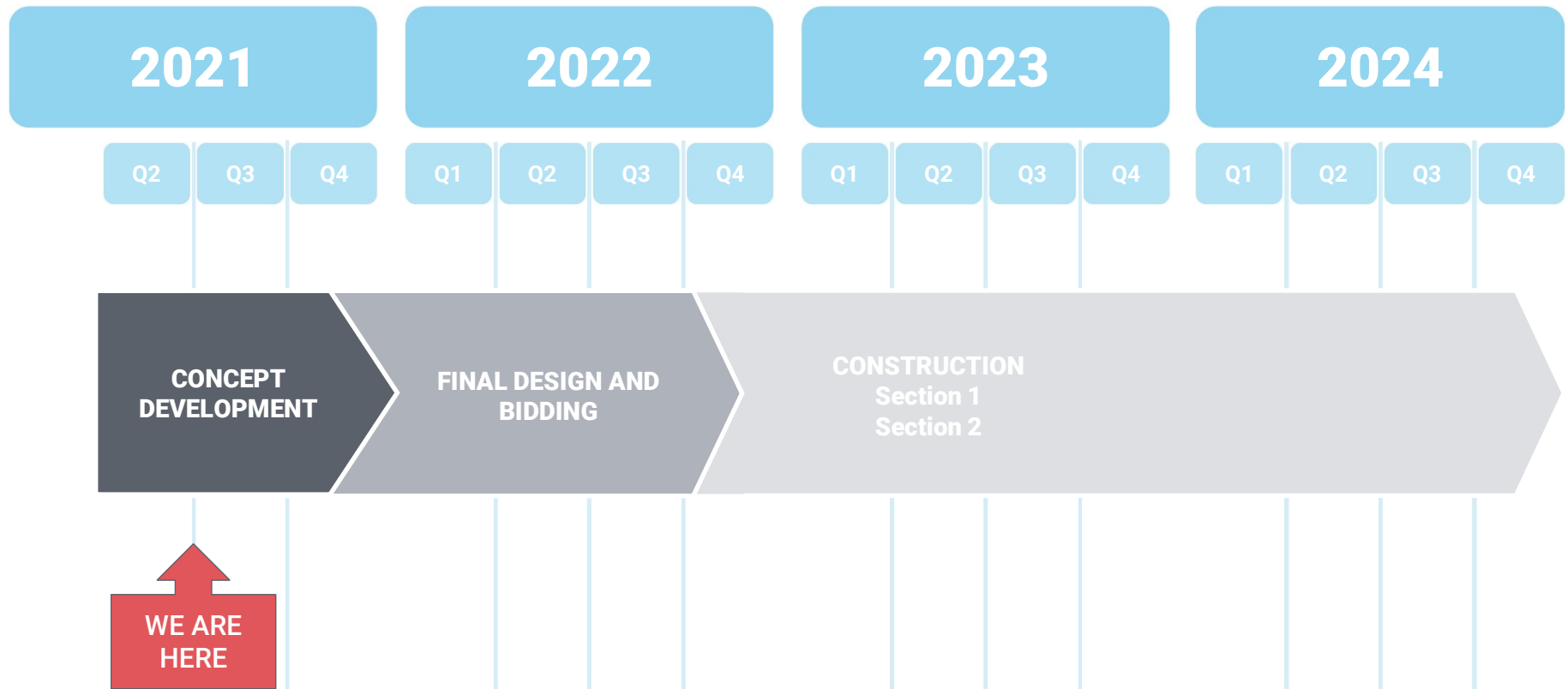
- Community Meeting #3

PUBLIC OUTREACH



PROJECT SCOPE & SCHEDULE

12



PROJECT SCHEDULE



STREETSCAPE COMPONENTS



STREET FURNITURE



STREETSCAPE COMPONENTS



PLANTERS



STREETSCAPE COMPONENTS



SEATING



STREETSCAPE COMPONENTS



UPGRADED CROSSWALKS, PAVER PARKWAYS, TREES



STREETSCAPE COMPONENTS



BUFFERED BIKE LANE



PROTECTED BIKE LANE



PROTECTED BIKE LANE



BIKE LANE



SHARED BIKE LANE



INTERSECTION MARKINGS

BIKE INFRASTRUCTURE



STREETSCAPE COMPONENTS



INTERNATIONAL
CROSSWALK



PEDESTRIAN
SIGNAGE



CURB RAMP



PEDESTRIAN REFUGE
ISLAND



PEDESTRIAN
COUNTDOWN TIMER



CURB EXTENSION



SCHOOL CROSSING
SIGNAGE



PROTECTED BIKE
LANE



DECORATIVE
INTERSECTION
PAVEMENT

BIKE AND PEDESTRIAN SAFETY IMPROVEMENTS



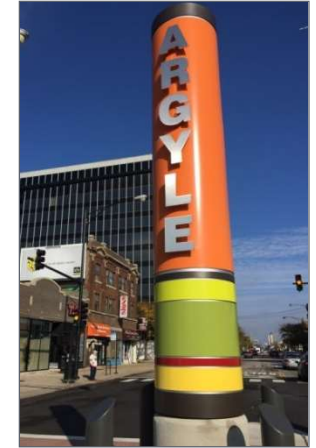
STREETSCAPE COMPONENTS



COMMUNITY IDENTIFIERS – LIGHT POLE IDENTIFIER



STREETSCAPE COMPONENTS



COMMUNITY IDENTIFIERS – GATEWAY



STREETSCAPE COMPONENTS

ROADWAY LIGHTING



CHICAGO GATEWAY POLE

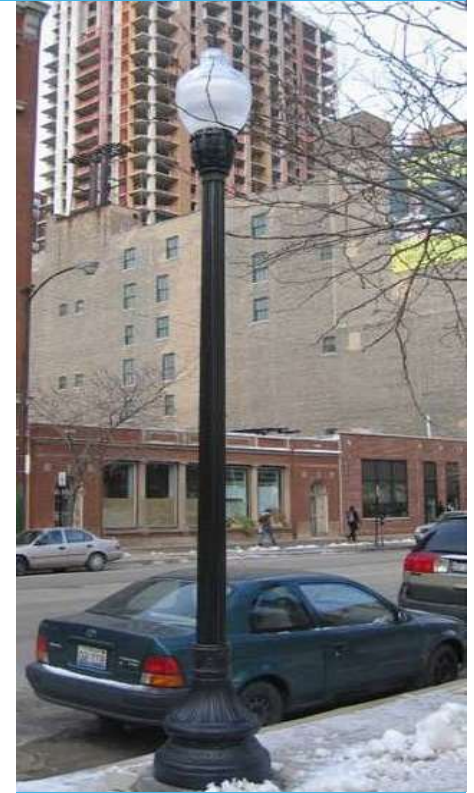


DAVIT POLE

PEDESTRIAN/SIDEWALK LIGHTING



DOUBLE ACORN



SINGLE ACORN

STREET LIGHTING



Which streetscape components do you think would BENEFIT the community? Select all that apply.

Mentimeter



Shared presentation "Public Meeting 1"

Copy to your account

LIVE POLL



To better align the project’s goals, CDOT is reviewing improvements proposed from previous neighborhood studies



Englewood: Making A Difference (2005)

Strategies where every resident, business owner, community and institutional leader can make a difference



Greater Englewood Community Plan (2008)

63rd and Halsted identified as a regional center corridor for commercial and mixed-use spaces



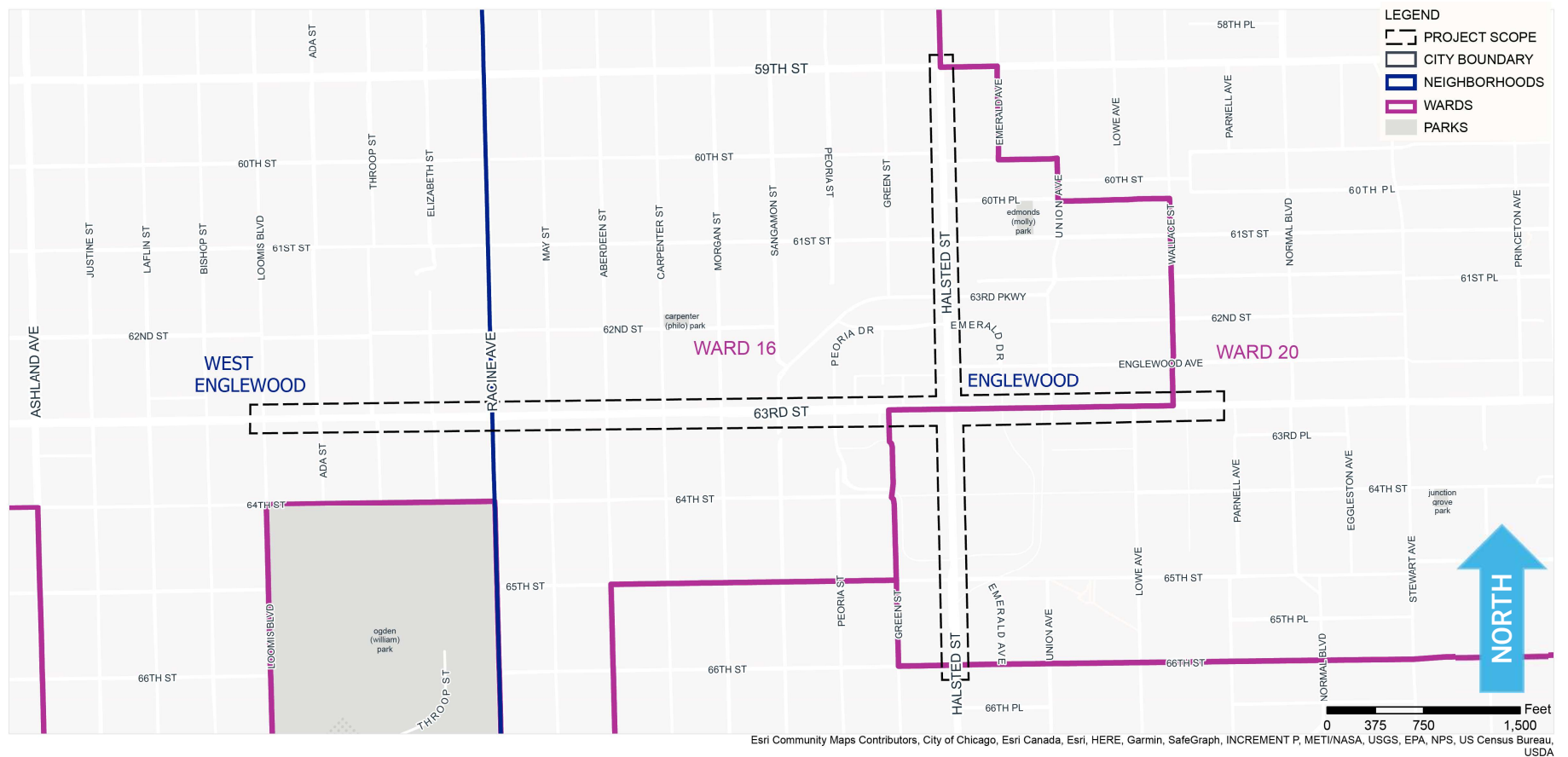
Green Healthy Neighborhoods (2014)

Focused on improvements and investments for housing, retail, landscape, manufacturing, open space, green infrastructure and historic preservation



INVEST South/West: Greater Englewood (2020)

Determined 63rd and Halsted is a priority focus due to the multiple transportation options and ample opportunities for additional development.

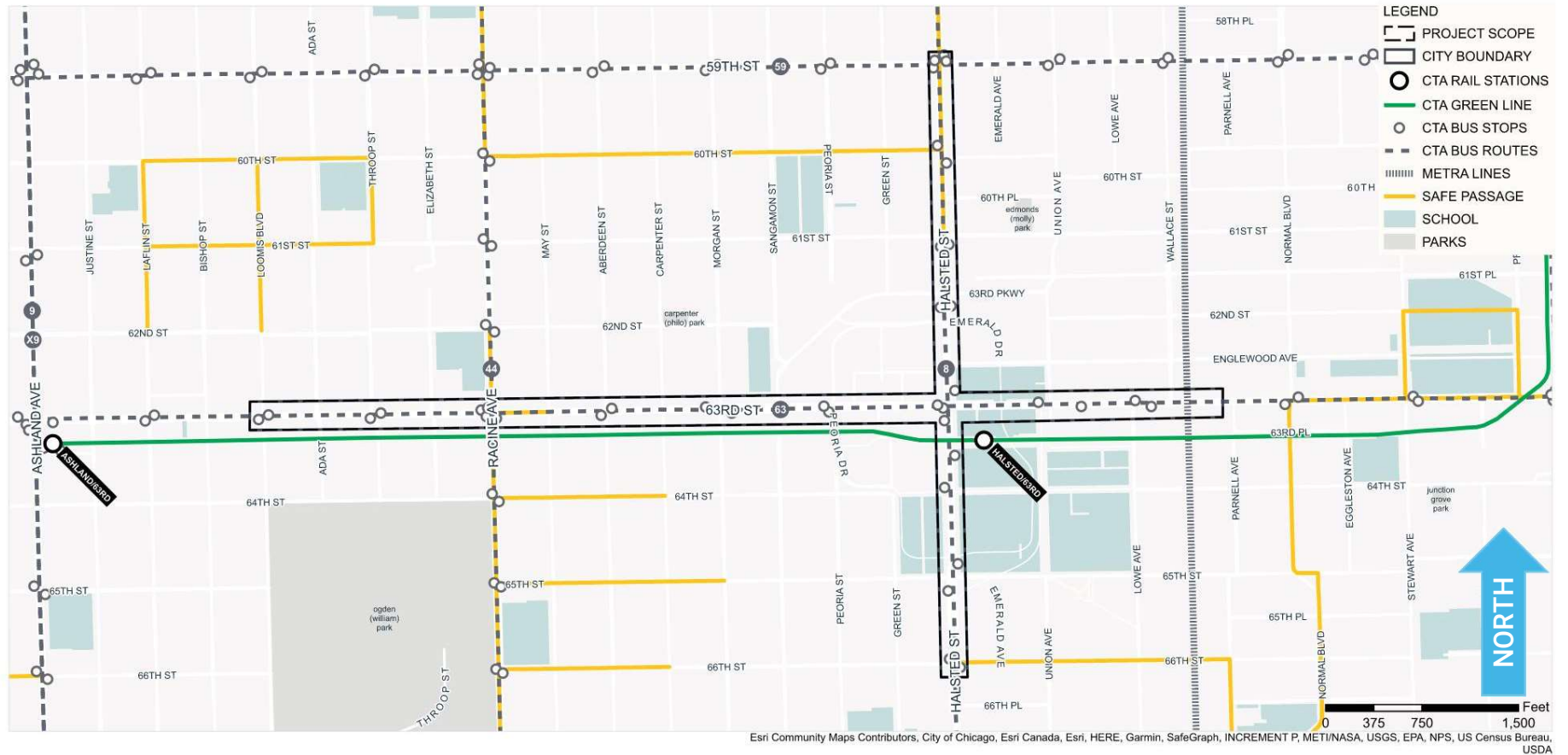


INITIAL OBSERVATIONS



EXISTING BIKE ROUTES





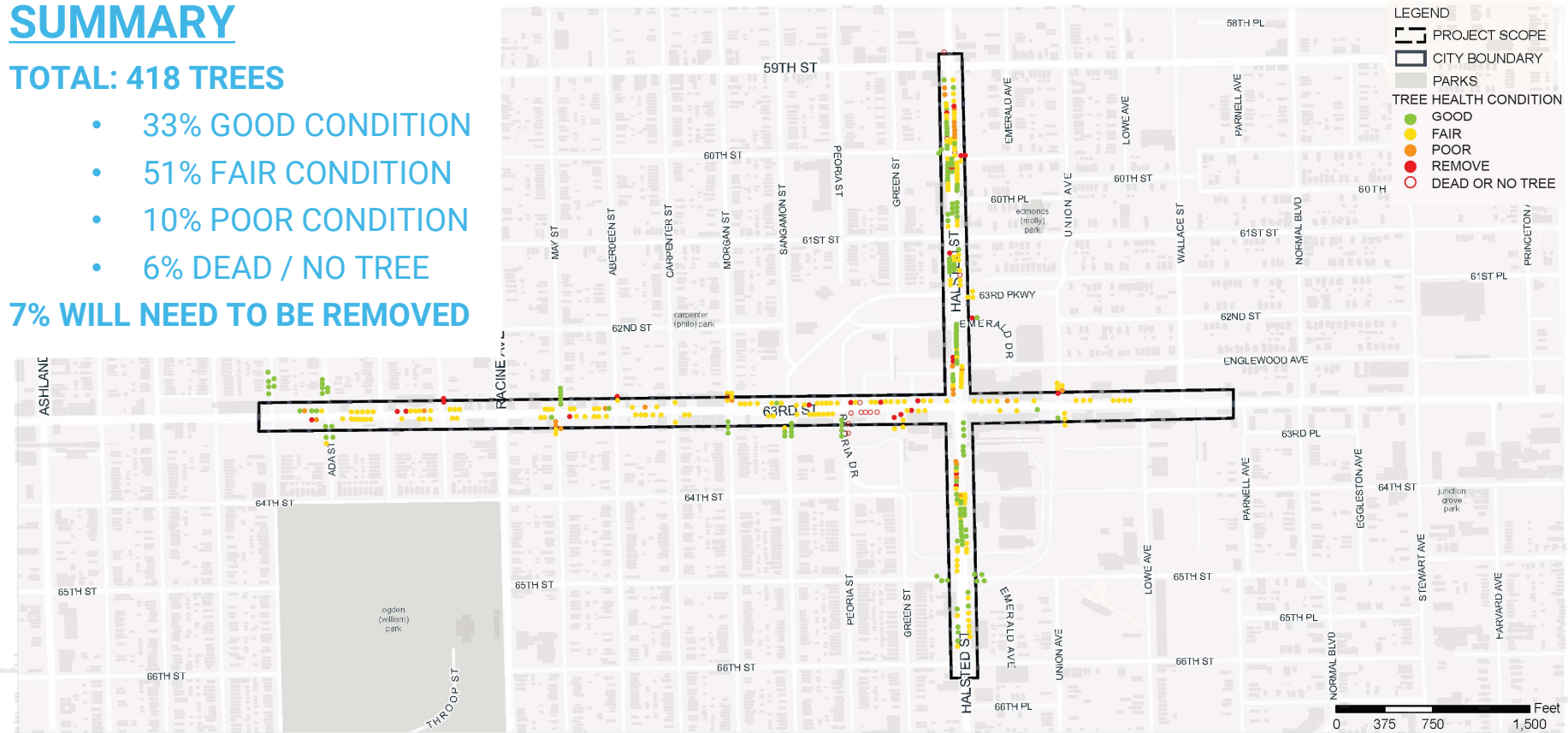
INITIAL OBSERVATIONS

SUMMARY

TOTAL: 418 TREES

- 33% GOOD CONDITION
- 51% FAIR CONDITION
- 10% POOR CONDITION
- 6% DEAD / NO TREE

7% WILL NEED TO BE REMOVED



Esri Community Maps Contributors, City of Chicago, Esri Canada, Esri, HERE, Garmin, SafeGraph, INCREMENT P, METI/NASA, USGS, EPA, NPS, US Census Bureau, USDA

TREE HEALTH

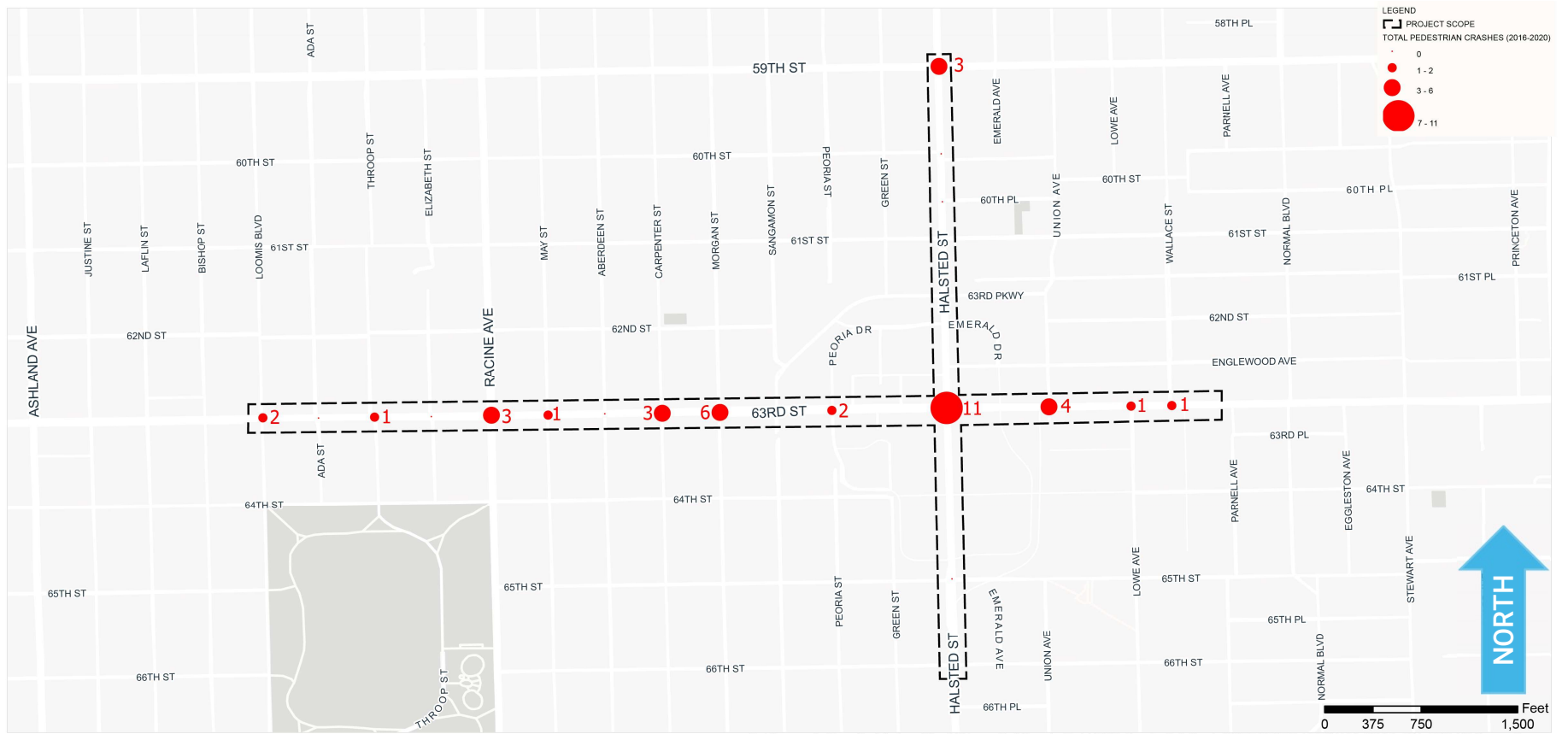




Esri Community Maps Contributors, City of Chicago, Esri Canada, Esri, HERE, Garmin, SafeGraph, INCREMENT P, METI/NASA, USGS, EPA, NPS, US Census Bureau, USDA

PEDESTRIAN TRAFFIC





Esri Community Maps Contributors, City of Chicago, Esri Canada, Esri, HERE, Garmin, SafeGraph, INCREMENT P, METI/NASA, USGS, EPA, NPS, US Census Bureau, USDA

CRASH DATA - PEDESTRIANS





Esri Community Maps Contributors, City of Chicago, Esri Canada, Esri, HERE, Garmin, SafeGraph, INCREMENT P, METI/NASA, USGS, EPA, NPS, US Census Bureau, USDA

CRASH DATA - BICYCLISTS



INITIAL OBSERVATIONS



Esri Community Maps Contributors, City of Chicago, Esri Canada, Esri, HERE, Garmin, SafeGraph, INCREMENT P, METI/NASA, USGS, EPA, NPS, US Census Bureau, USDA

CRASH DATA - VEHICLES



What do you want to see PRIORITIZED along 63rd St?

Mentimeter



Shared presentation "Public Meeting 1"

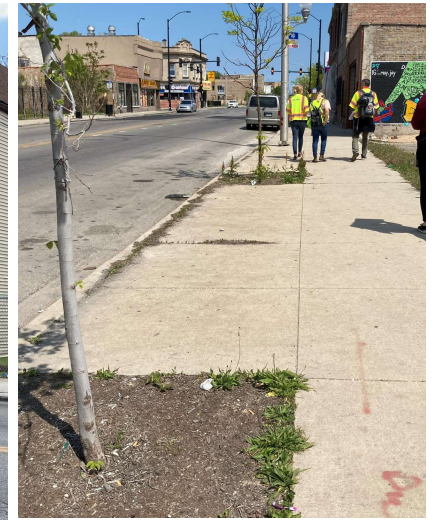
Copy to your account

LIVE POLL



63rd Street – Initial Findings

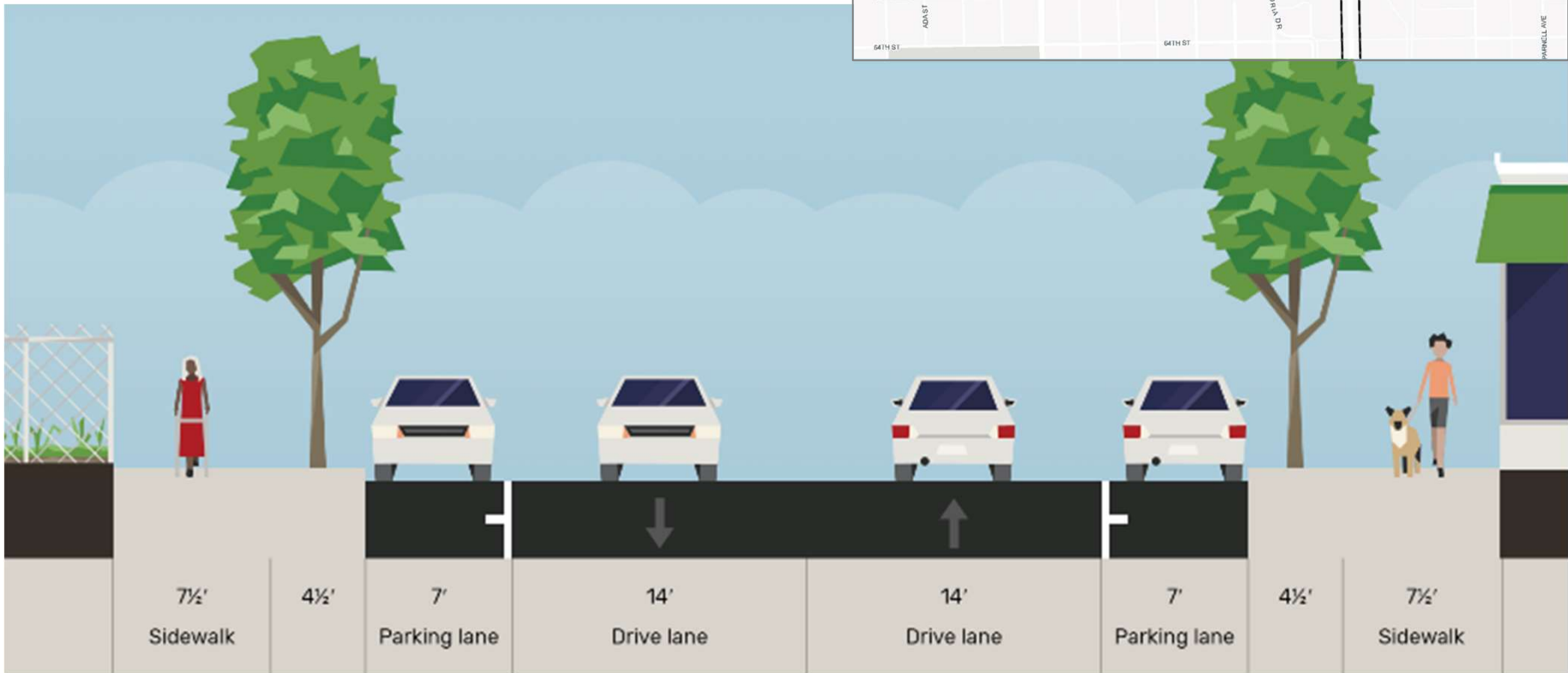
- Many vacant lots on the west end of the corridor
- Inconsistent street trees
- New light posts from Halsted to Morgan street
- Inconsistent sidewalk widths
- No bike lanes
- No high visual crosswalks
- No bump-outs for safer pedestrian crossings
- ADA ramps need to be checked for compliance
- Multiple non-compliant parking lots
- A lot of on-street parking



63RD STREET



Loomis to Morgan – 42' Roadway



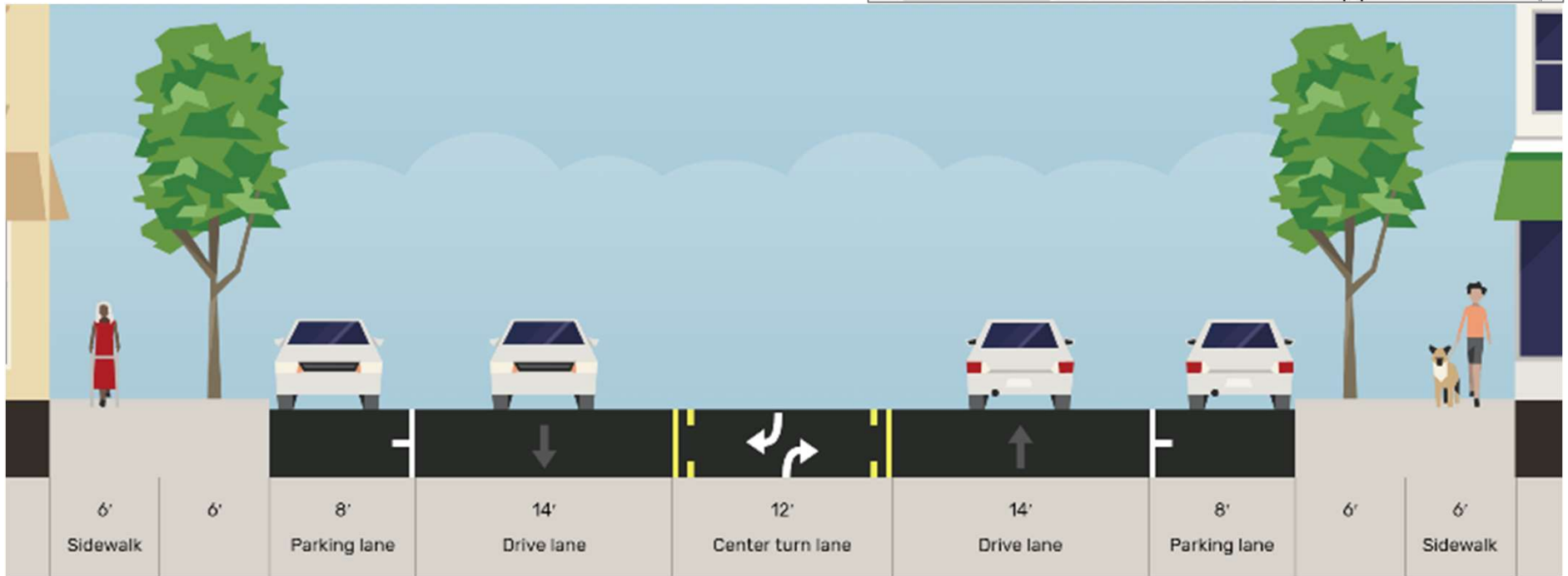
Cross sections created using Streetmix.net

63RD STREET – CROSS SECTIONS



INITIAL OBSERVATIONS

Sangamon to Union – 56' Roadway

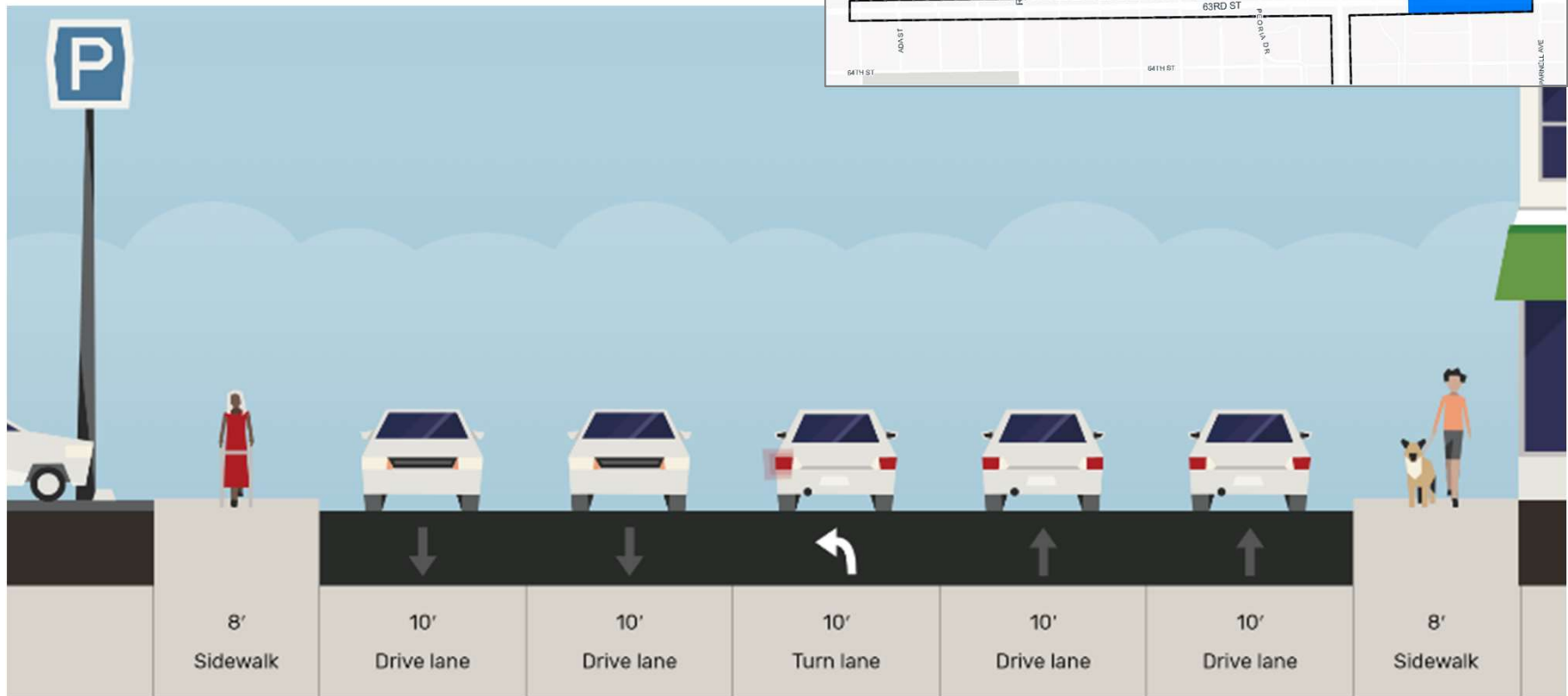


Cross sections created using Streetmix.net

63RD STREET – CROSS SECTIONS



Union to Wallace – 50' Roadway



Cross sections created using Streetmix.net

63RD STREET – CROSS SECTIONS



General Corridor Opportunities

- Enhanced landscaping within the ROW
- Gateways
- Identifiers
- Public art
- Safe passage signage/safety
- ADA ramps with bump outs
- Mid-block bump outs for placemaking and traffic control
- Enhanced crosswalks
- Enhanced bus stops
- Enhanced bike infrastructure

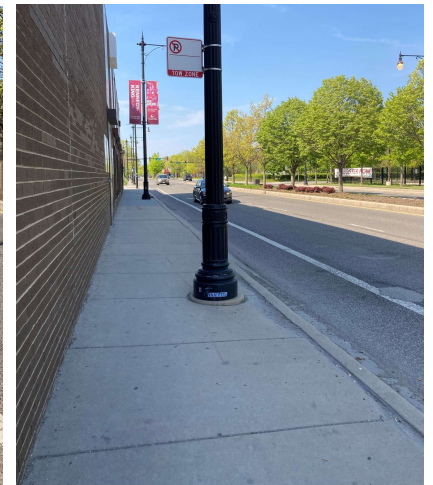
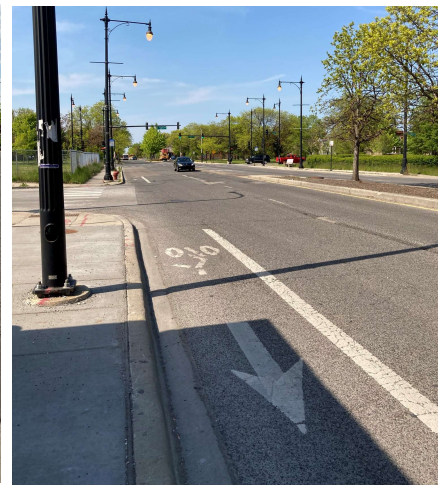


63RD STREET OPPORTUNITIES



Halsted Street – Initial Findings

- Many vacant lots north of Englewood Square
- Longer blocks towards the north end of the corridor
- Landscaped medians, but inconsistent street trees
- Newer light posts with banners on them from 65th St – 63rd Parkway
- Overhead utility lines 65th to 66th
- High traffic speeds
- Bike lane from 65th St to 63rd Parkway
- High visibility crosswalks not present at some intersections
- No bump-outs for safer pedestrian crossings
- Multiple parking lots not compliant with Landscape Ordinance
- Minimal on-street parking



HALSTED STREET

CITY OF CHICAGO
INVEST
SOUTH * WEST
MAYOR LOUI S. LIGHTFOOT

CHICAGO
WORKS
MAYOR LOUI S. LIGHTFOOT

 **CDOT**

59th to Englewood Ave – 80' Roadway w/ Median



Cross sections created using Streetmix.net

HALSTED STREET – CROSS SECTIONS



Englewood Ave to 65th – 100' Roadway w/ Median

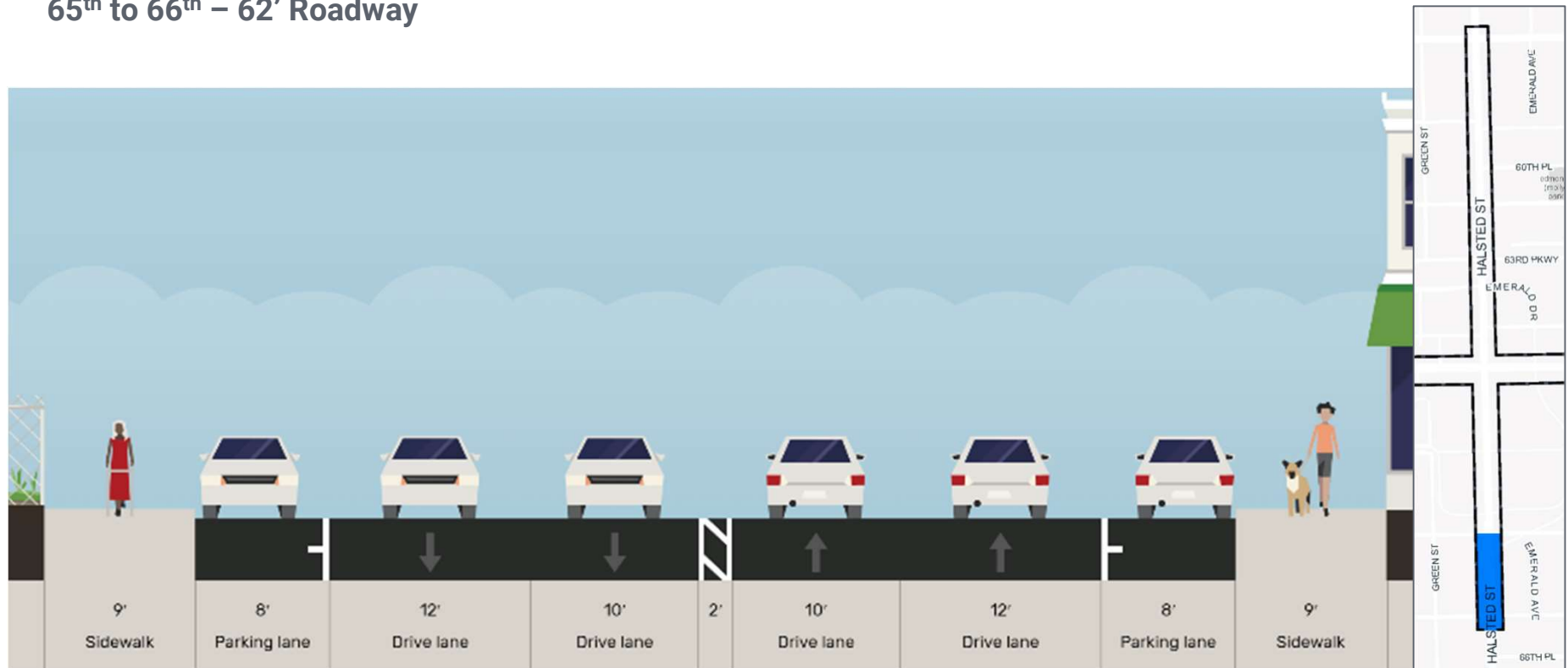


Cross sections created using Streetmix.net

HALSTED STREET – CROSS SECTIONS



65th to 66th – 62' Roadway



Cross sections created using Streetmix.net

HALSTED STREET – CROSS SECTIONS



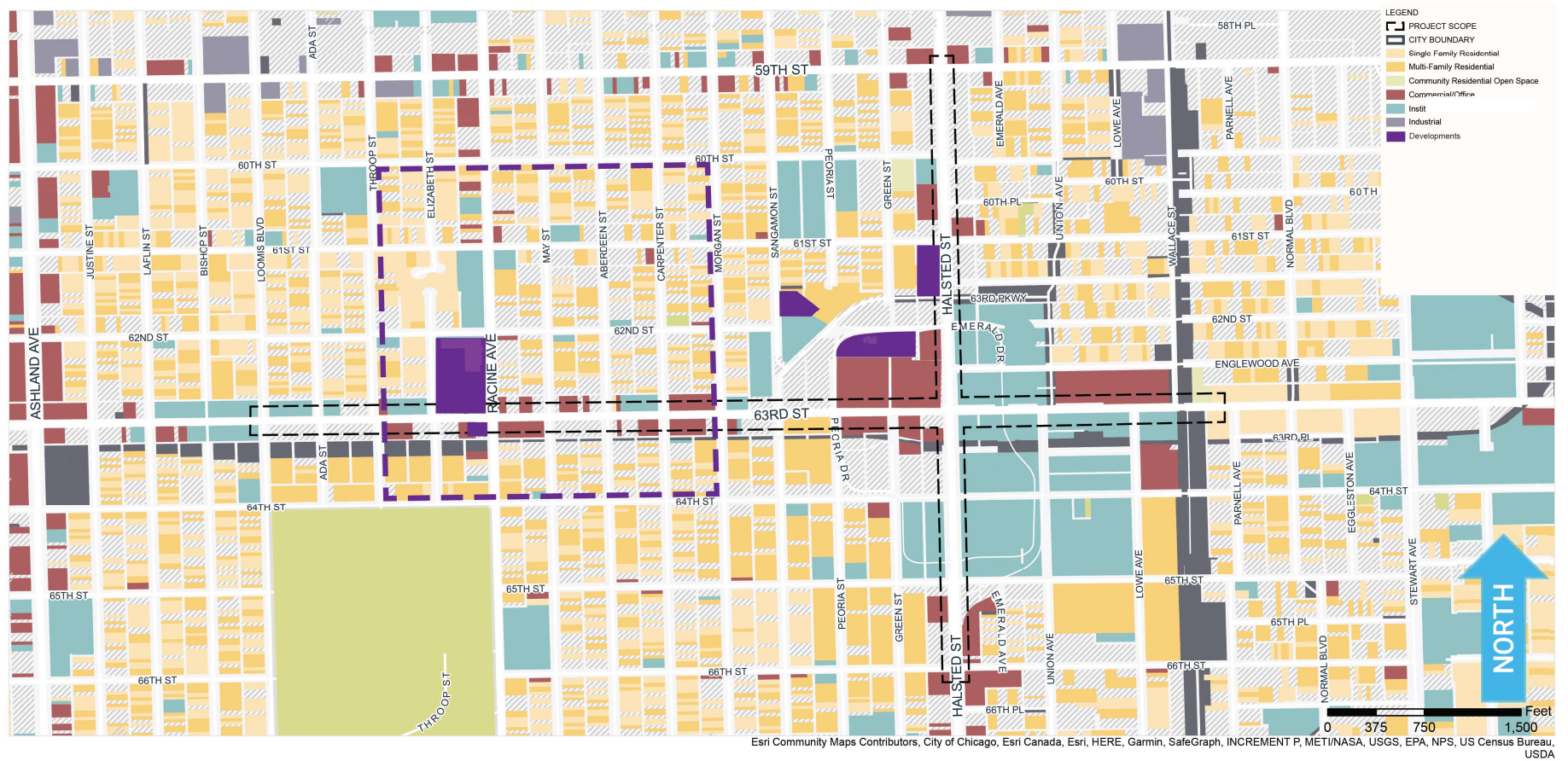
General Corridor Opportunities

- ADA ramps with bump outs
- Mid-block bump outs for placemaking and traffic control
- Enhanced crosswalks
- Enhanced bus stops
- Enhanced bike infrastructure
- Enhanced landscaping within the ROW
- Gateways
- Identifiers
- Public art
- Safe passage signage/safety



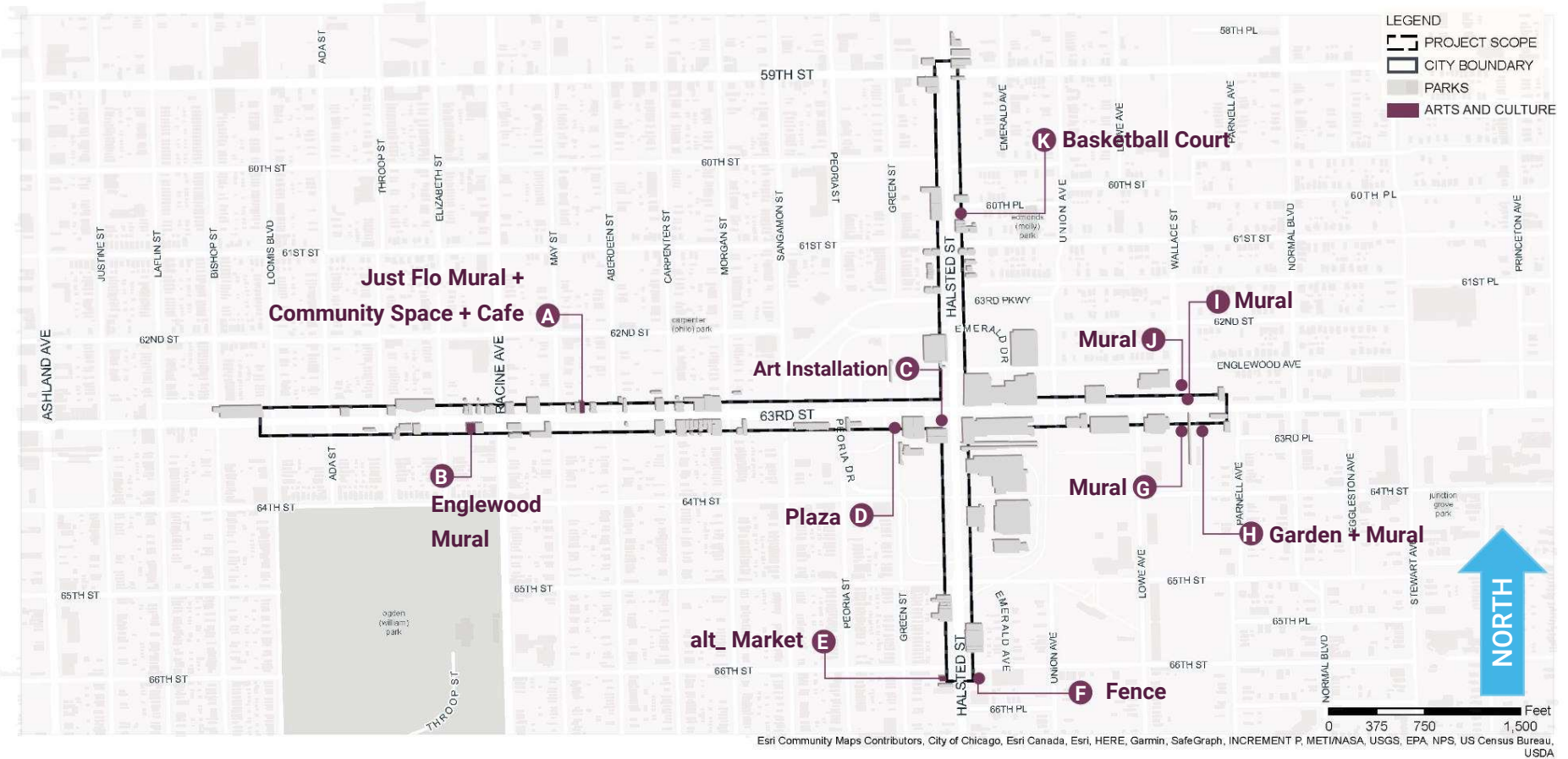
HALSTED OPPORTUNITIES

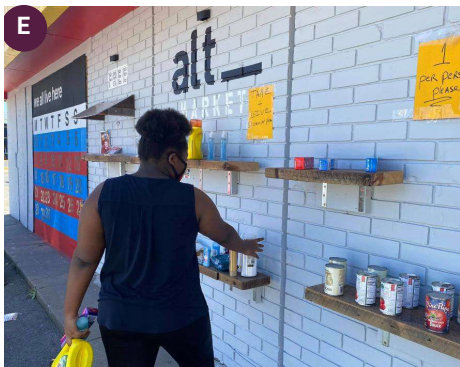




LAND USE







PUBLIC ART / NEIGHBORHOOD CULTURE





PLAYFUL
ACTIVE



PLAYFUL/ACTIVE





TRADITIONAL / HISTORIC



TRADITIONAL/HISTORIC





MODERN /
CONTEMPORARY

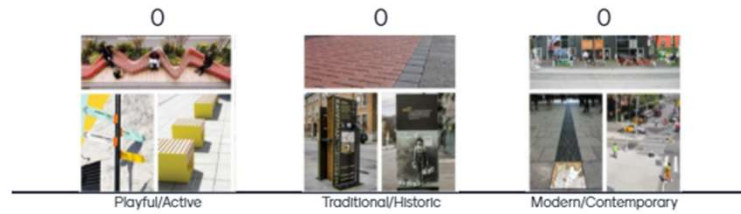


MODERN/CONTEMPORARY



What kind of CHARACTER would you like the corridor to have?

Mentimeter



Shared presentation "Public Meeting 1"

Copy to your account

LIVE POLL



How would you like to USE the outdoor space at 63rd St Plaza??



Show Image
Shoutout 5

Shared presentation "Public Meeting 1"

Copy to your account

LIVE POLL



What are the BEST features along 63rd St and S Halsted St?

Mentimeter



Shared presentation "Public Meeting 1"

Copy to your account

LIVE POLL





Community Context & Corridor Use Survey #1



Develop Corridor Design Concepts

**THANK YOU! THANK YOU!
THANK YOU!**

We appreciate YOU taking the time to join us!

Contact [Camille Applewhite](#) by visiting

chicagocompletestreets.org/portfolio/isw-greater-englewood/

there is a comment box there that can be used to reach the Project Manager.

