



Public Meeting
April 11th, 2017

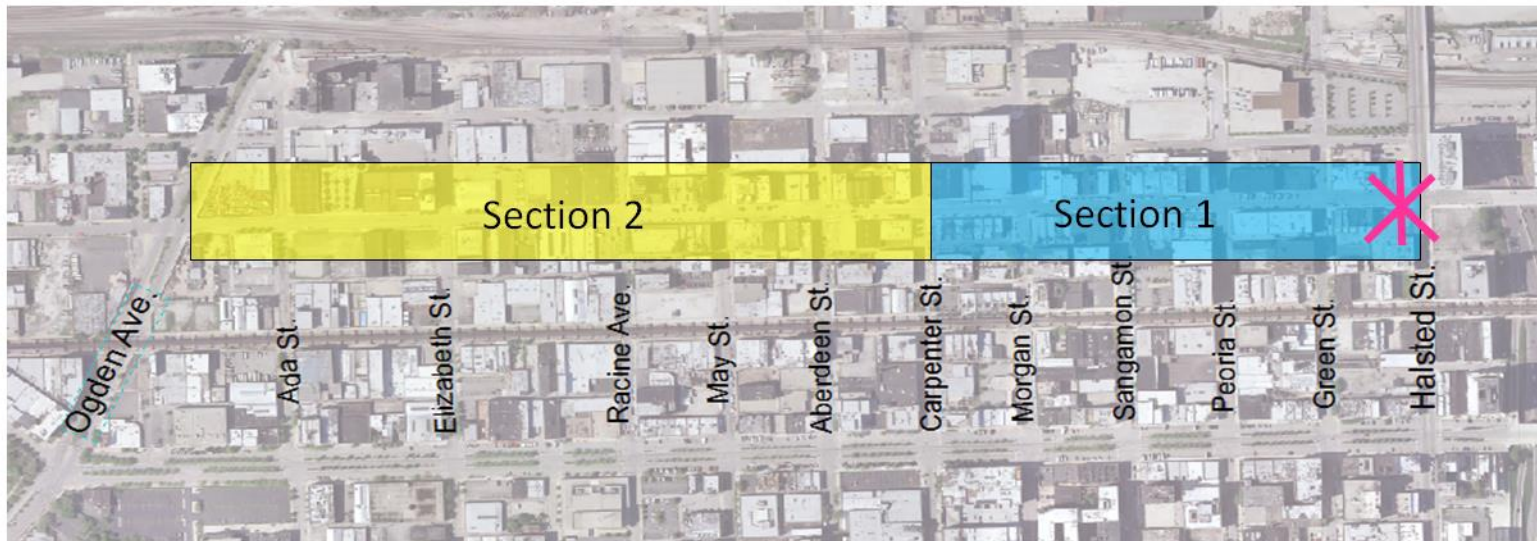


Agenda

- Project Overview
 - Project Limits, Timeline and Purpose
 - Public Involvement
 - Landmark Designation
 - Project Goal
 - Selected Design Elements for Entire Corridor
- Section 1 – Overview and Schedule
- Section 2 – Discovery
 - Existing Conditions and Changing Land Uses
 - Task Force and Individual Stakeholder Input
- Section 2 – Proposed Improvements
- Next Steps
- Q&A
- Exhibit Review



Project Limits and Timeline



Major Gateway Completed



Streetscape on Fulton Market Section 1



Streetscape on Fulton Market Section 2

2014	2015	2016	2017	2018
<p>Fulton Market Streetscape project begins</p> <ul style="list-style-type: none"> Task Force + Public Meetings 	<p>Section 1 Streetscape design begins</p> <ul style="list-style-type: none"> Task Force + Public Meetings Gateway completed 	<p>Section 1 Streetscape design complete</p> <ul style="list-style-type: none"> Construction out to bid 	<p>Section 1 Streetscape construction begins</p> <p>Section 2 Streetscape design begins</p> <ul style="list-style-type: none"> Task Force + Public Meetings Final design complete 	<p>Section 1 Streetscape construction continues</p> <p>Section 2 Streetscape construction out to bid and construction begins</p>

Observations

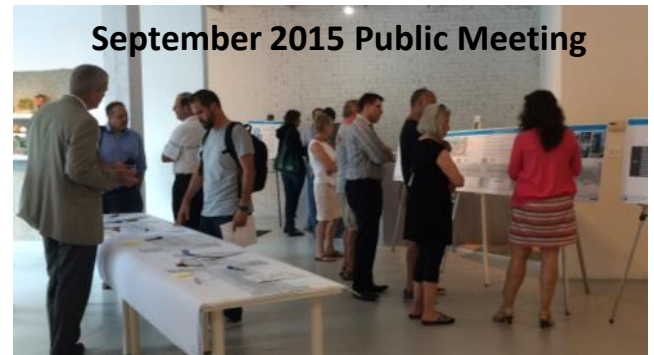
- Aging infrastructure and utilities
- Poor drainage
- Poor traffic flow
- Poor lighting
- Parking is undefined and confusing
- Difficult to navigate as a pedestrian
- Sidewalks and docks are not accessible by all users
- Conflicts between old and new uses; day and night uses
- Historical significance
- Sense of place

Public Involvement

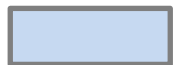
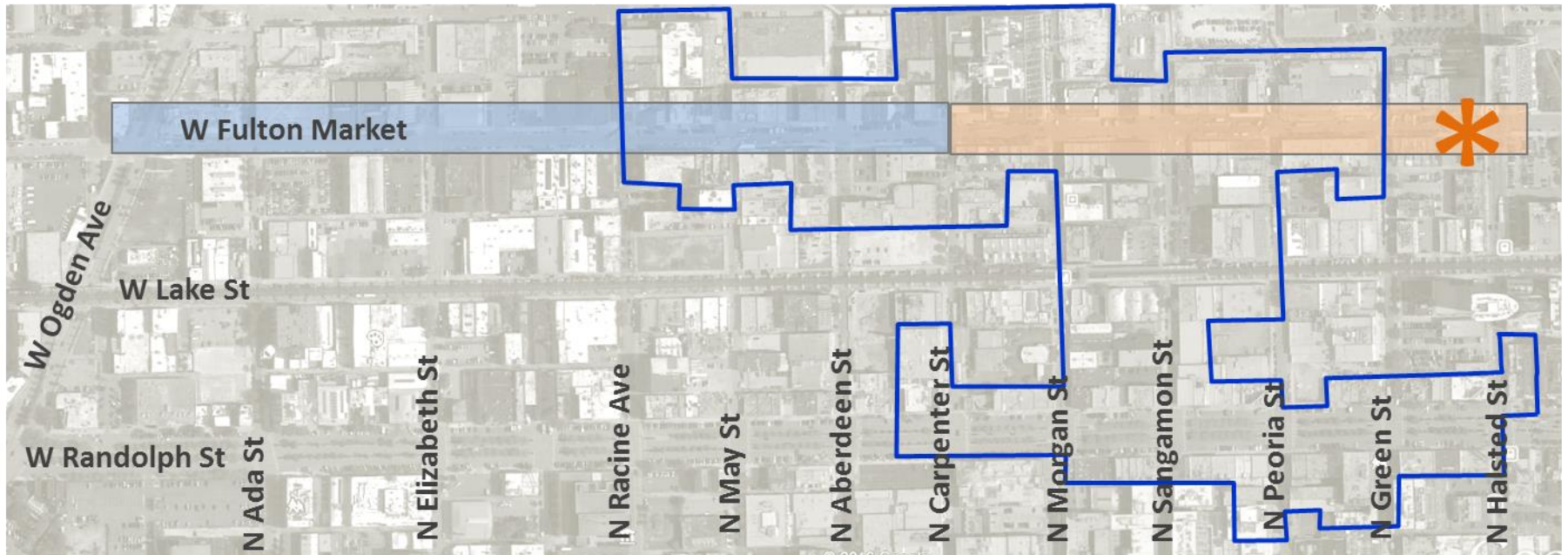
Design Workshops and Public Meetings (2014-2015)

Comments received:

- Upgrading existing infrastructure
- Parking concerns
- Accommodation of existing loading needs
- Rationalize curbside uses
- Address pedestrian safety
- Address accessibility
- Speeding during off-peak hours
- Need for flexibility in the street
- Define traffic pattern
- Increase unique programming and activities
- Cultivate culture and community
- Celebrate unique district identity



Landmark Designation – Effective September 2015



Section 2



Section 1



Historic District Boundary



Existing Gateway

Landmark Designation & Historic Character

Cobbled Surface and Worn Paving

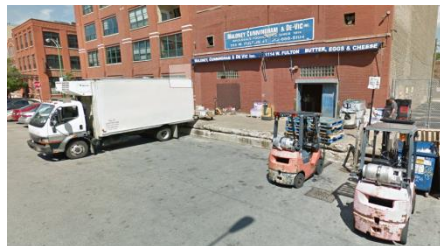


Reclaimed **granite cobble**



Worn sidewalk between Peoria and Sangamon

Loading Docks & Delivery Areas



Loading docks between Aberdeen and May



Canopies and flush curb looking east from Sangamon

Industrial Aesthetic



Pipe railing at Mars Gallery;
steel faced curbs



Minimalistic industrial appearance

Project Goal

Maintain **flexible use** of the right-of-way, improve **public safety**, upgrade **infrastructure**, and provide **enhancements** that respect the **historic character** and significance of the area.



Section 1 - Halsted to Carpenter Improvements



- Flex-street design
- Road reconstruction and resurfacing
- Four reclaimed cobbled intersections
- New grey colored sidewalks, curb, and gutter
- Drainage improvements
- Preserved raised curbs and docks modified for ADA accessibility
- ADA ramps
- Bump outs
- High visibility crosswalks
- Pavement Markings
- New lighting
- Street furnishings
- Side street improvements
- Tree plantings along side streets
- Potable water and electrical outlets for farmers' markets
- Overhead utility relocations



Fulton Market, looking East at Green Street



Fulton Market, looking West between Green and Peoria Streets



Fulton Market, looking East between Sangamon and Morgan



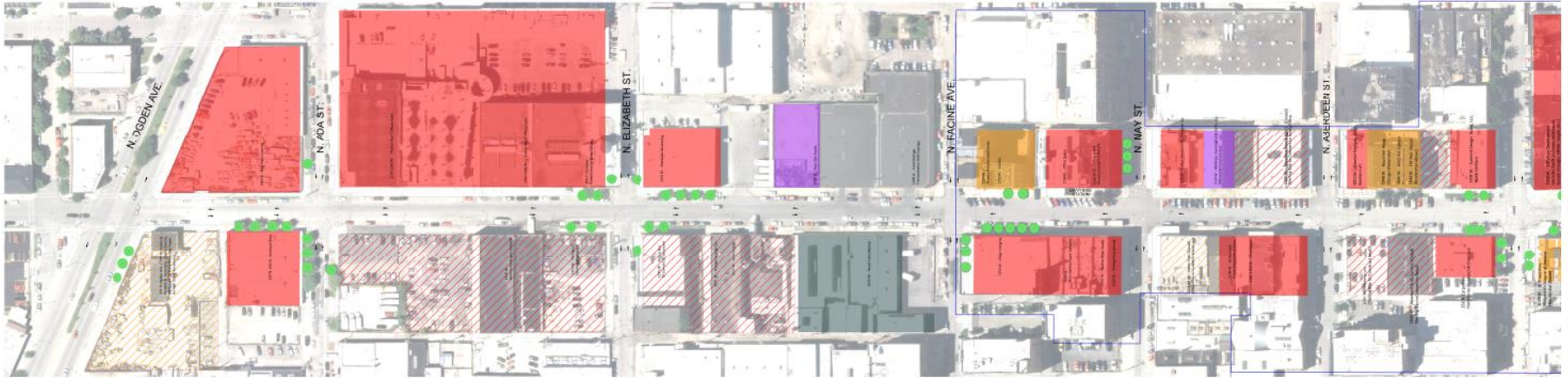
Fulton Market, looking East at Peoria Street

Construction Start – In progress
Construction Finish – Summer 2018



Streetscape Elements



Section 2 - Carpenter to Ogden, Existing Land Uses



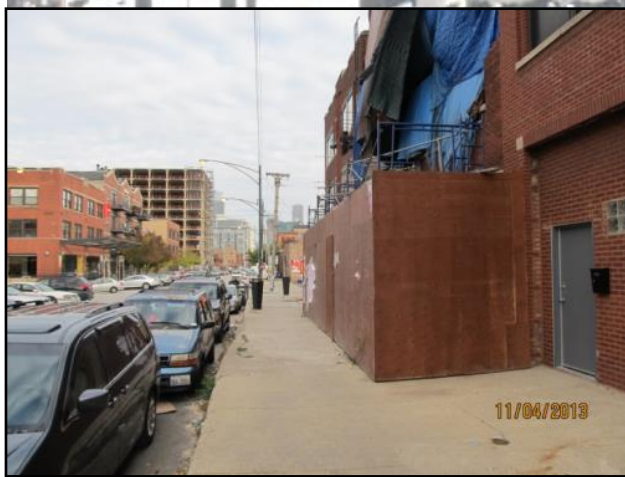
Legend

-  Office/Retail
-  Mixed Use
-  Industrial/Manufacturing
-  Event Space
-  Transportation-Related
-  Proposed Office/Retail Development
-  Proposed Mixed Use Development
-  Historic District Boundary

Not to scale



Section 2 – Existing Conditions



Legend

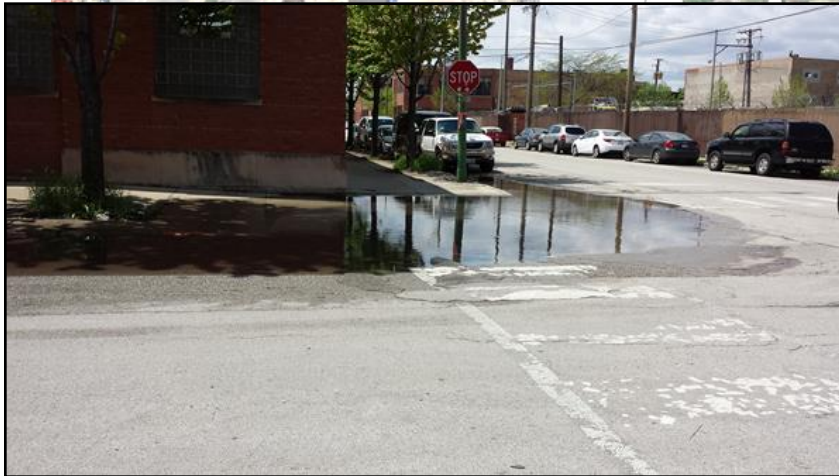
- "No Parking" Zones
- - - Raised Walk / Loading Dock
- Steel Edge Curb or Dock
- ● ● Existing Trees
- Existing Grass Parkway
- Existing Loading Areas
- Existing Sidewalk Cafes
- Existing Building Overhangs
- Limits of Historic District

Not to scale



Between May St. and Aberdeen St.

Section 2 – Existing Conditions cont'd



Corner of Ada St. and Fulton Mkt.

Legend

- "No Parking" Zones
- Raised Walk / Loading Dock
- Steel Edge Curb or Dock
- Existing Trees
- Existing Grass Parkway
- Existing Loading Areas

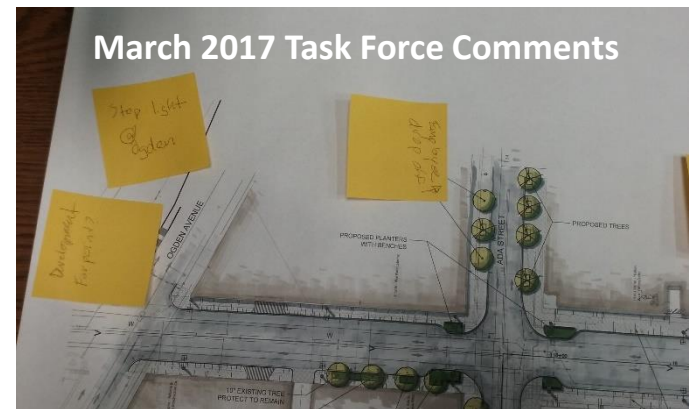
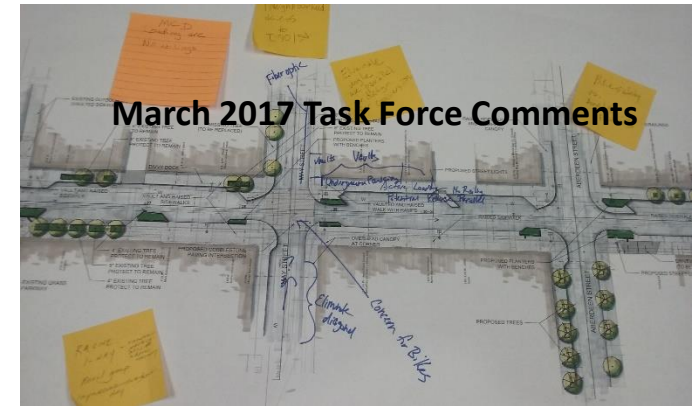
Not to scale



Section 2 – Task Force Meeting and Stakeholder Meetings (2017)

Comments received:

- Need for ADA accessible sidewalks
- Concern about wrong-way drivers
- Drainage and ponding issues
- Racine Ave. is too narrow
- Need for resurfacing
- Safety and lighting
- Need traffic signal at Ogden
- More planters and cobbles



Section 2 – Proposed Improvements

Roadway

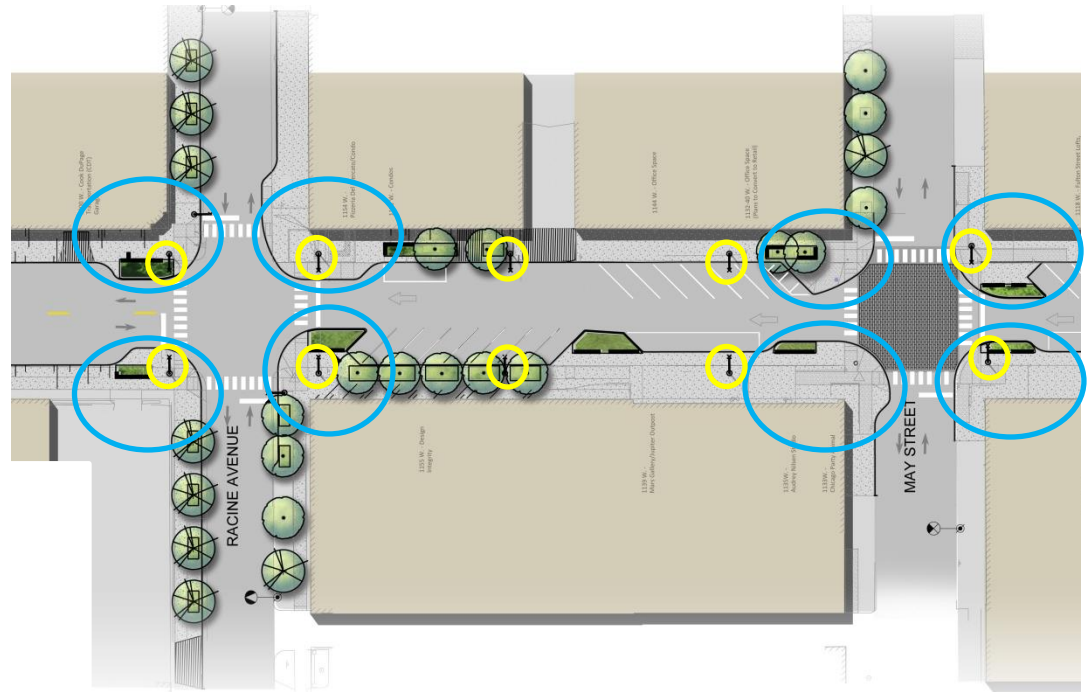
- Narrow driving lane to improve traffic flow
- Improve parking configuration
- Fill vaulted sidewalks
- Bury Com Ed overhead lines
- New sidewalks, curbs, gutters
- Full-width resurfacing
- Drainage improvements



Section 2 – Proposed Improvements

Pedestrian Safety

- Accessibility improvements at corners and raised sidewalk areas
- High visibility crosswalks
- Bump-outs to shorten crossing distances
- New LED lighting on both sides
- Pavement Markings



Section 2 – Proposed Improvements

Streetscape and Historic Elements

(Section 1 / Section 2 continuity)

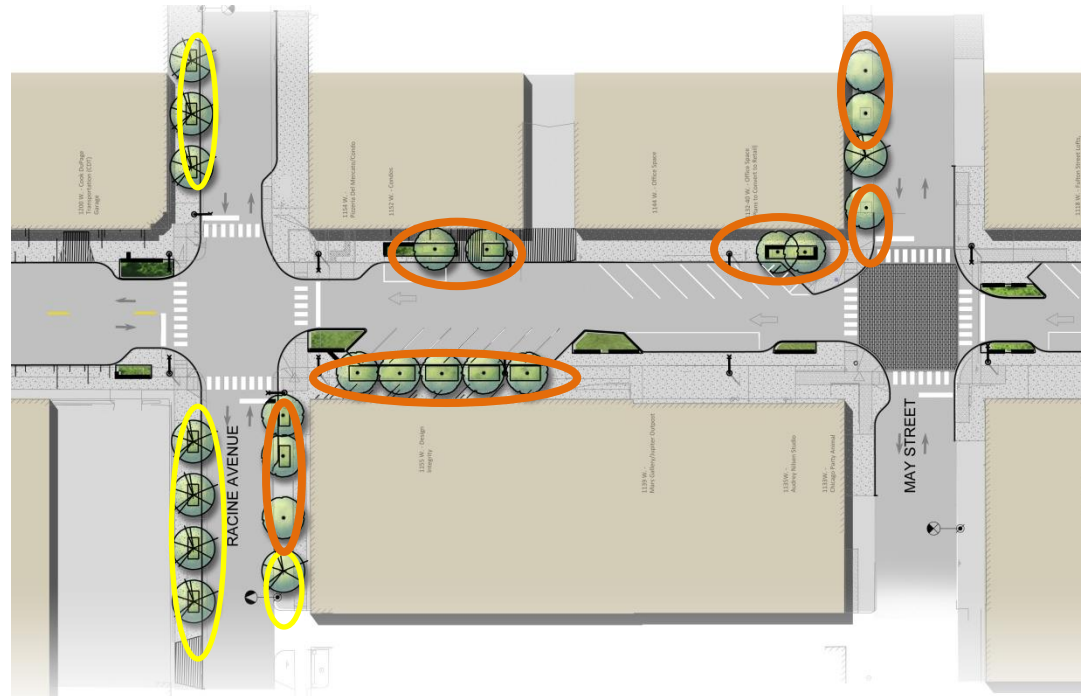
- Reclaimed granite cobble intersections
- Granite cobble accents throughout
- In-ground planters with aluminum and wood benches
- Aluminum pipe railings at raised walks



Section 2 – Proposed Improvements

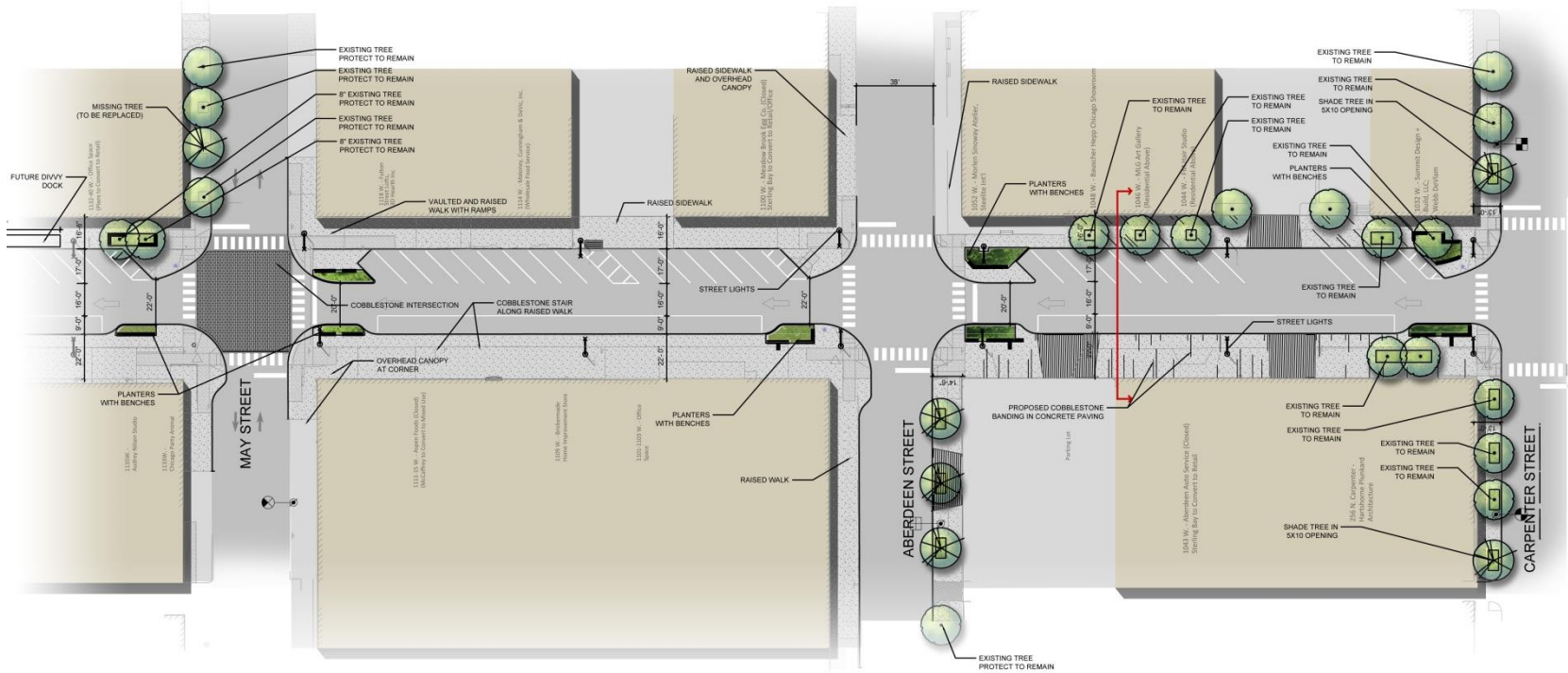
Streetscape and Historic Elements

- Replace grass parkways with sidewalk
- Stainless steel bike racks
- Protect existing trees
- New trees on side streets only



Section 2 – Proposed Improvements

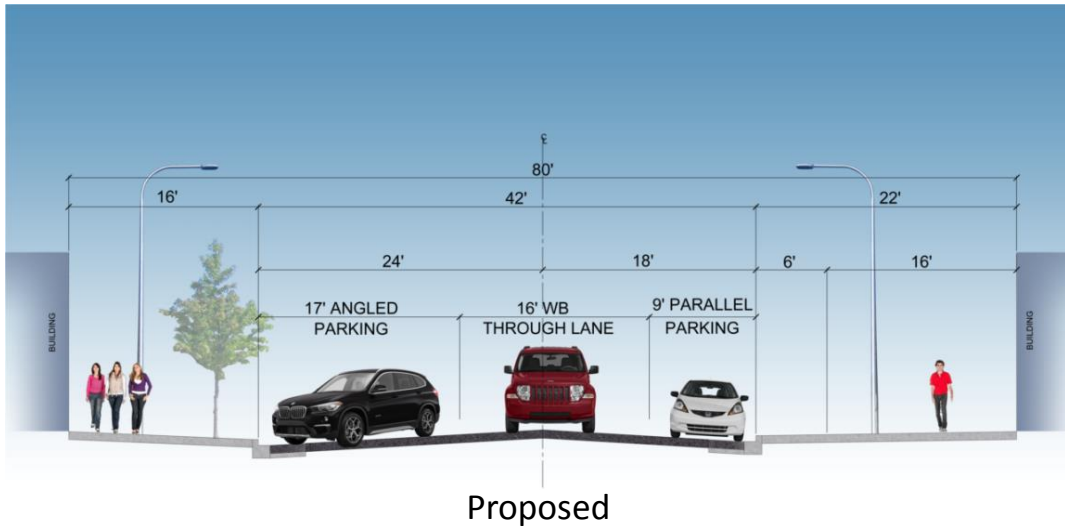
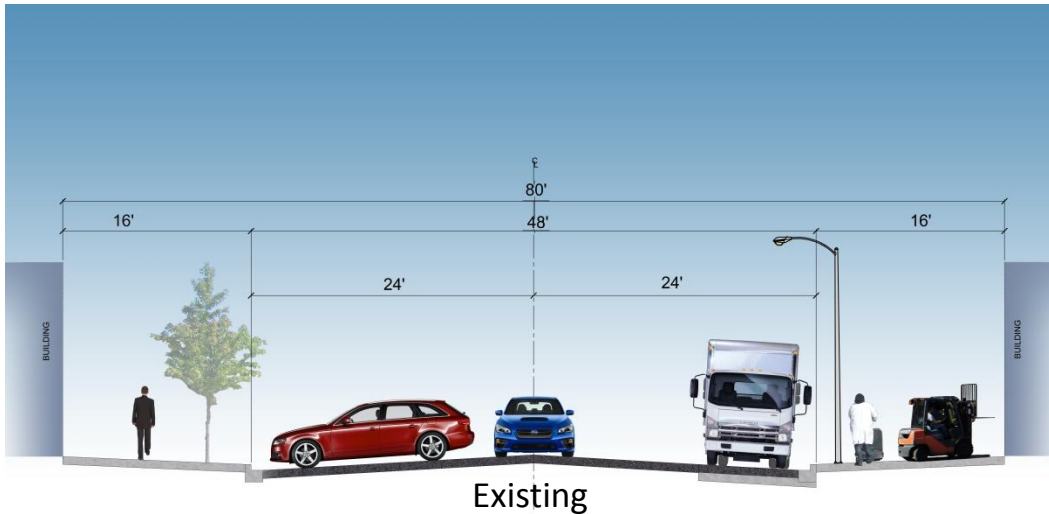
Carpenter to May



- Maintain one-way westbound traffic
- Maintain Angle Parking (north)
- Maintain Parallel parking (south)
- Widen south sidewalk

Section 2 – Existing and Proposed Cross Sections

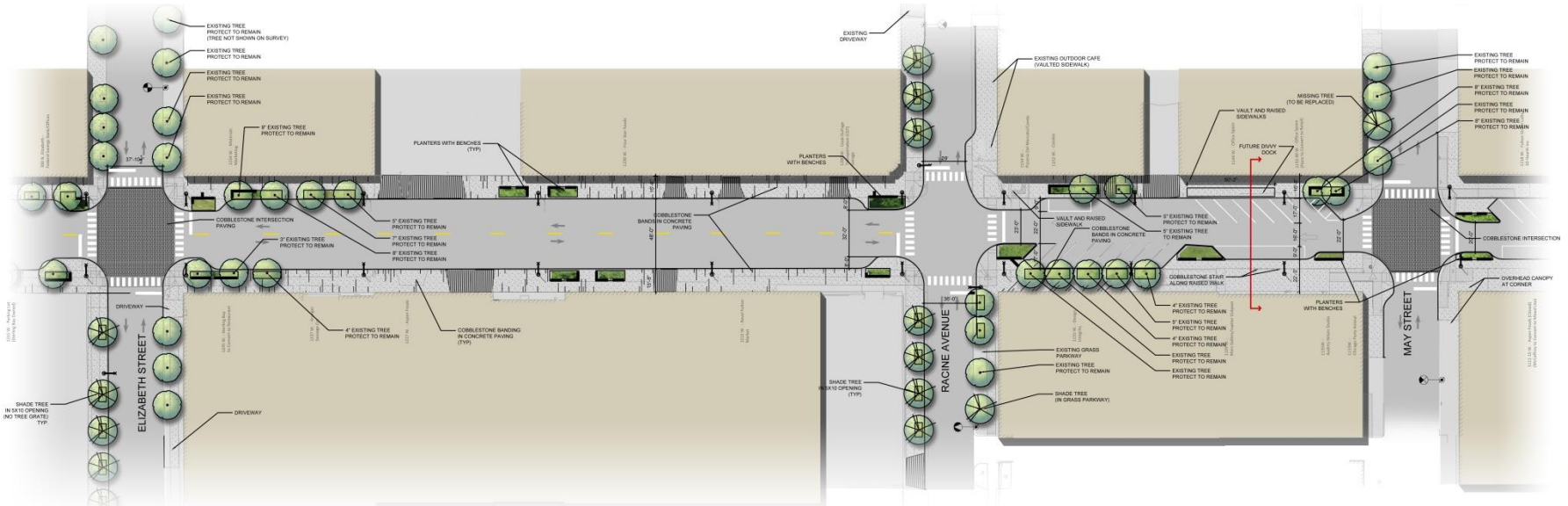
Carpenter to May



- South sidewalk width increased from 16' to 22' (raised condition maintained where existing)
- Defined 17' angled parking lane on north side of street
- 16' wide one-way west bound through lane
- 9' parallel parking lane

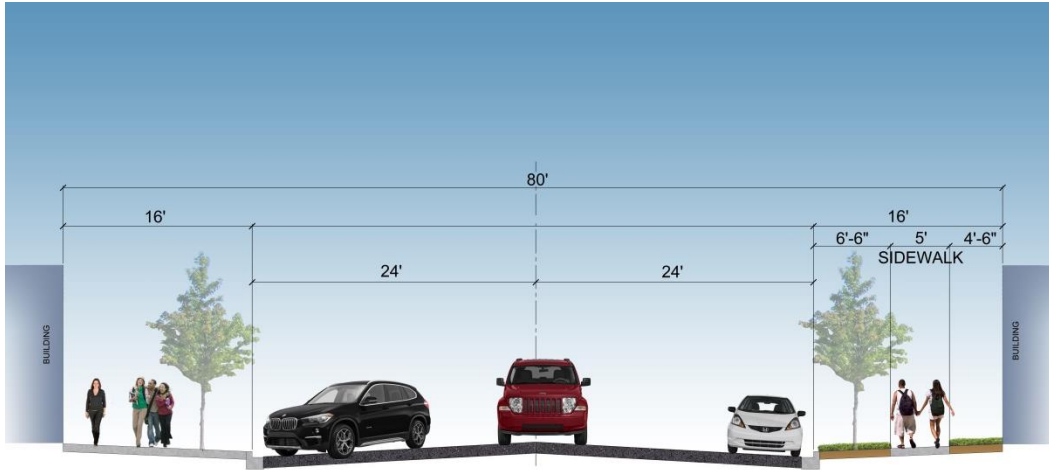
Section 2 – Proposed Improvements

May to Elizabeth

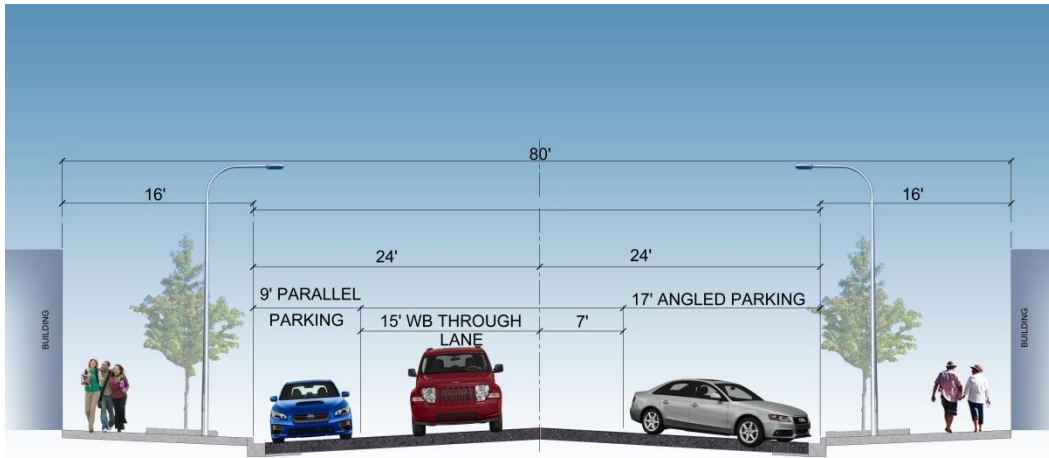


Section 2 – Existing and Proposed Cross Sections

West of May to Racine



Existing

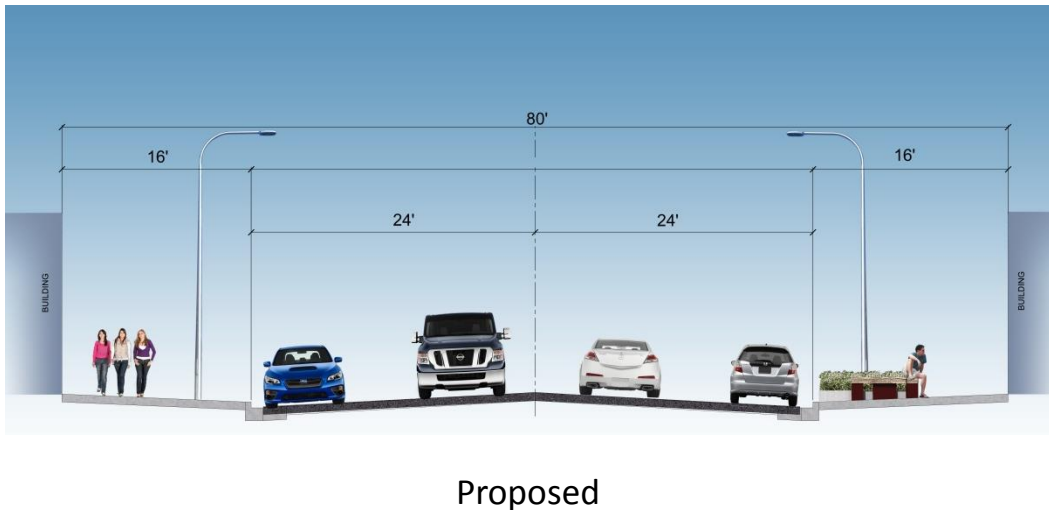
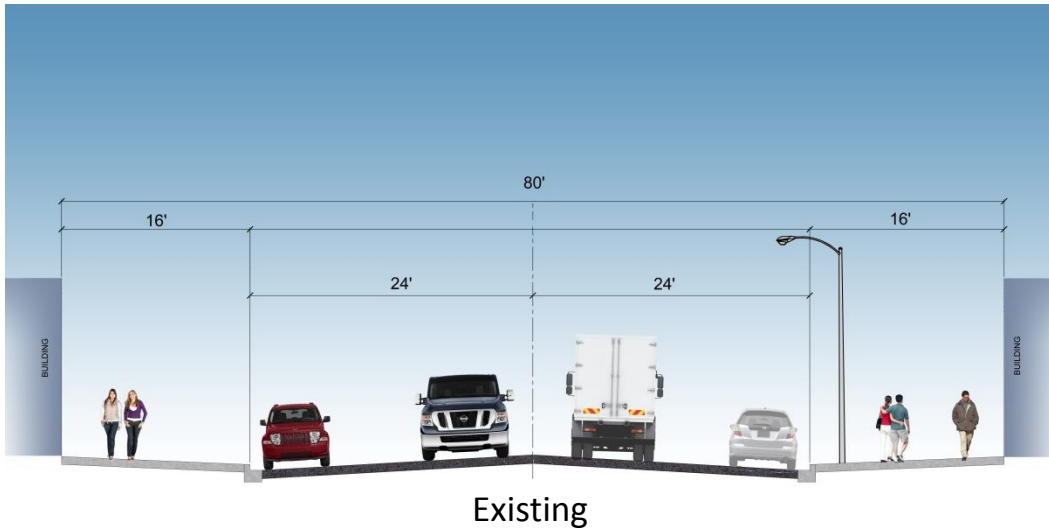


Proposed

- Grass parkway removed
- Angle parking flips from north to south and parallel parking flips from south to north
- Allows for traffic shift

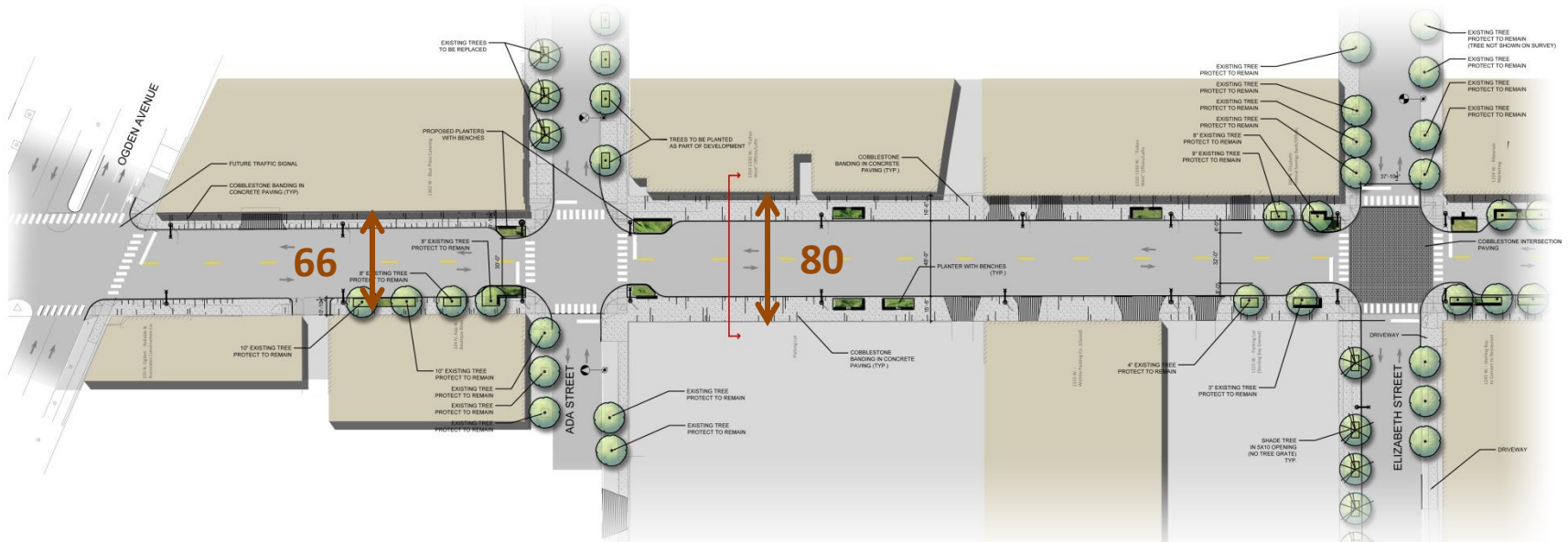
Section 2 – Existing and Proposed Cross Sections

Racine to Elizabeth



- Roadway cross-section is maintained
- Wide driving lanes accommodate truck traffic

Section 2 – Proposed Improvements Elizabeth to Ogden



- Two-way traffic
- Parallel parking both sides
- 80 feet public way narrows to 66 feet west of Ada
- Left turn lanes and traffic signals installed at Ogden

Timeline and Next Steps

- Spring 2017
 - Incorporate feedback & continue to develop design
- Summer/ Fall 2017
 - Review updated design with Task Force
 - Public Meeting - Present Pre-Final Design
- Spring/Summer 2018
 - Begin Construction

Thank You!

Questions?

Fulton Market project website

<http://chicagocompletestreets.org/portfolio/fulton-market-ogden-to-halsted/>



Stay In Touch



Website

www.chicagocompletestreets.org

Twitter

@CDOTNews

Facebook

facebook.com/CDOTNews

Lubica Benak, Interim Director

Livable Streets Program

Lubica.benak@cityofchicago.org

312-742-2837

Roberto Rodriguez-Torres, AICP

Project Manager

rrodriguez@knightea.com

312-744-2632